

# Interim Park Access

December 4, 2017



- ▶ Undeveloped, underdeveloped, and future parks
- ▶ Report cards per park type
- ▶ Park development funding options
- ▶ Temporary or momentary usage in parks



Stuart Park Promenade

- ▶ Many undeveloped park sites lie fallow until development funding
- ▶ While lacking the amenities of an active park, they do function well as a natural area



Dehart Park



Brent's Grist Mill

- ▶ Temporary uses added: community gardens, off-leash dog parks or parking
- ▶ Temporary uses often become permanent expectations
- ▶ A challenge if uses do not align with the long-term plan



Rowcliffe Park – Off-leash Dog Park

- ▶ Perception of land lying vacant and available
- ▶ Requests by special interest groups
- ▶ May not align with long-term plan or City objectives
- ▶ Partnership funding is attractive



Quilchena Park

- ▶ Certain park sites are not made available for public use
- ▶ Concerns with undesirable activities
- ▶ Public requests for waterfront access are increasing

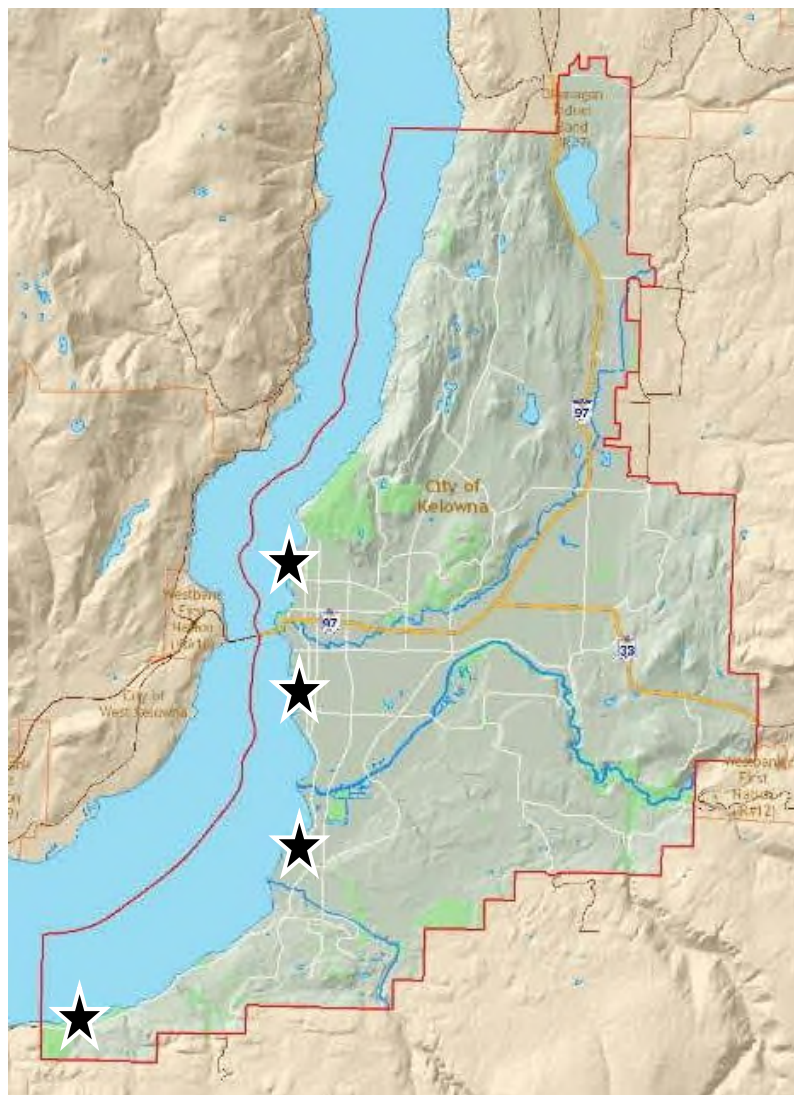


808 Manhattan Drive



'Walk the Beach' Kelowna  
Photo credit: CBC News

- ▶ Seeks to make waterfront access **available in short-term**
- ▶ Is **not delayed by funding** for full development
- ▶ Addresses the **concerns** of security and public safety
- ▶ Avoids **temporary uses** that **conflict** with long-term plan
- ▶ Ensures that interim **investment** is built upon



- ▶ 808 Manhattan Drive
- ▶ Pandosy Waterfront Park
- ▶ Bluebird Beach Park
- ▶ Swick Road Beach Access



808 Manhattan Drive



## Project Drivers:

- ▶ Local resident request
- ▶ Staff review



## History:

- ▶ Acquired as a parcel to form a larger park parcel in the future
- ▶ Never formalized into a beach access
- ▶ Agreement between Tolko and the City
- ▶ Local area residents have objected

**Pros:**

- ▶ Beautiful northwest facing beach
- ▶ Lakefront in the downtown core
- ▶ Local gem

**Cons:**

- ▶ Concerns with undesirable activity
- ▶ Immediately adjacent to mill site
- ▶ Not suitable for swimming



## Recommendation

- ▶ Council to direct staff to develop an interim access plan for 808 Manhattan Drive





Okanagan Lake

Swick Road  
Beach Access

Okanagan  
Mountain Park

Bertram Creek  
Regional Park

Lakeshore Rd.



## Project Drivers:

- ▶ Staff review
- ▶ Low cost to implement



City water pump station  
Proposed fencing

Existing maintenance access  
gate & new pedestrian gate

Parking

**Pros:**

- ▶ Small, unique beach and swimming area
- ▶ Quiet

**Cons:**

- ▶ No parking at beach level



## Recommendation

- ▶ Council to direct staff to develop an interim access plan for Swick Road Beach Access







## Project Driver:

- ▶ Staff review
- ▶ Public anticipation
- ▶ Nuisance avoidance

## Pros:

- ▶ Healthy and spacious beach
- ▶ Great swimming and paddling area
- ▶ Mature tree stands
- ▶ Native vegetation
- ▶ Low cost to implement

## Cons:

- ▶ Nuisance trees and overgrown vegetation removed to improve sightlines





## Recommendation

- ▶ Council to direct staff to develop an interim access plan for Bluebird Beach Park







## Project Driver:

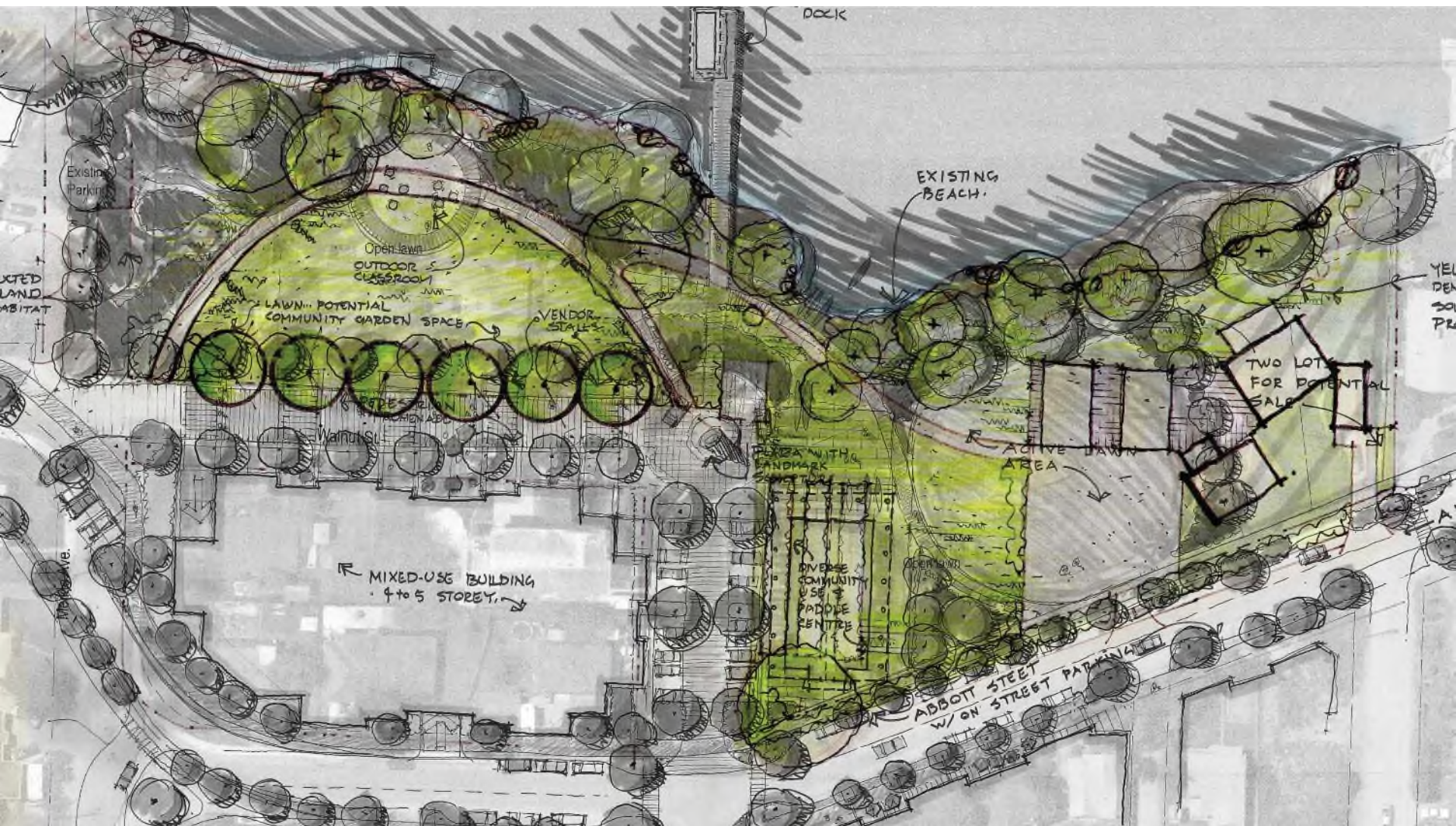
- ▶ Staff review
- ▶ Proposed dog beach location
- ▶ Neighbourhood partnership
- ▶ Kelowna Paddle Centre success

## ► KLO Neighborhood Association

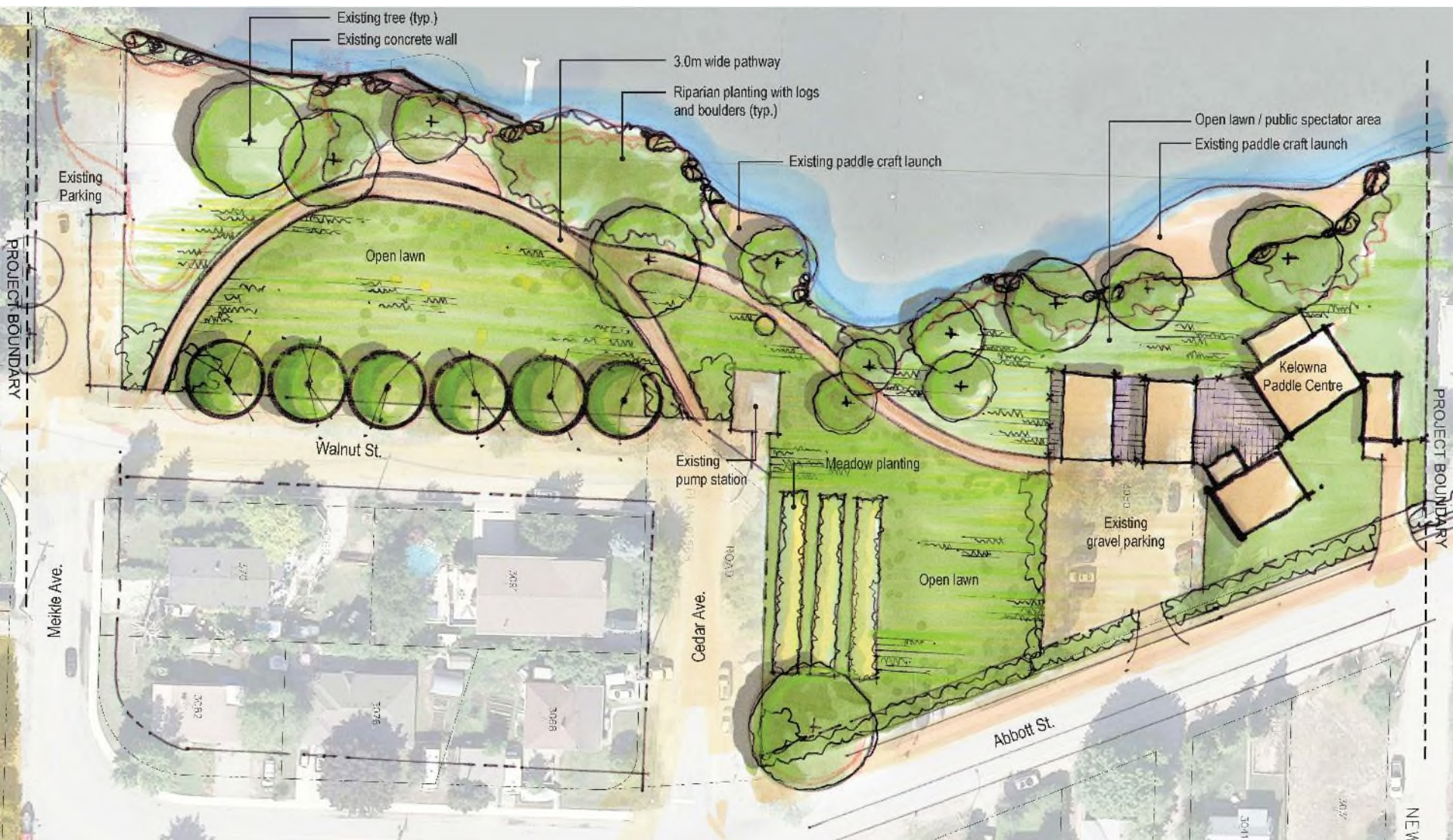


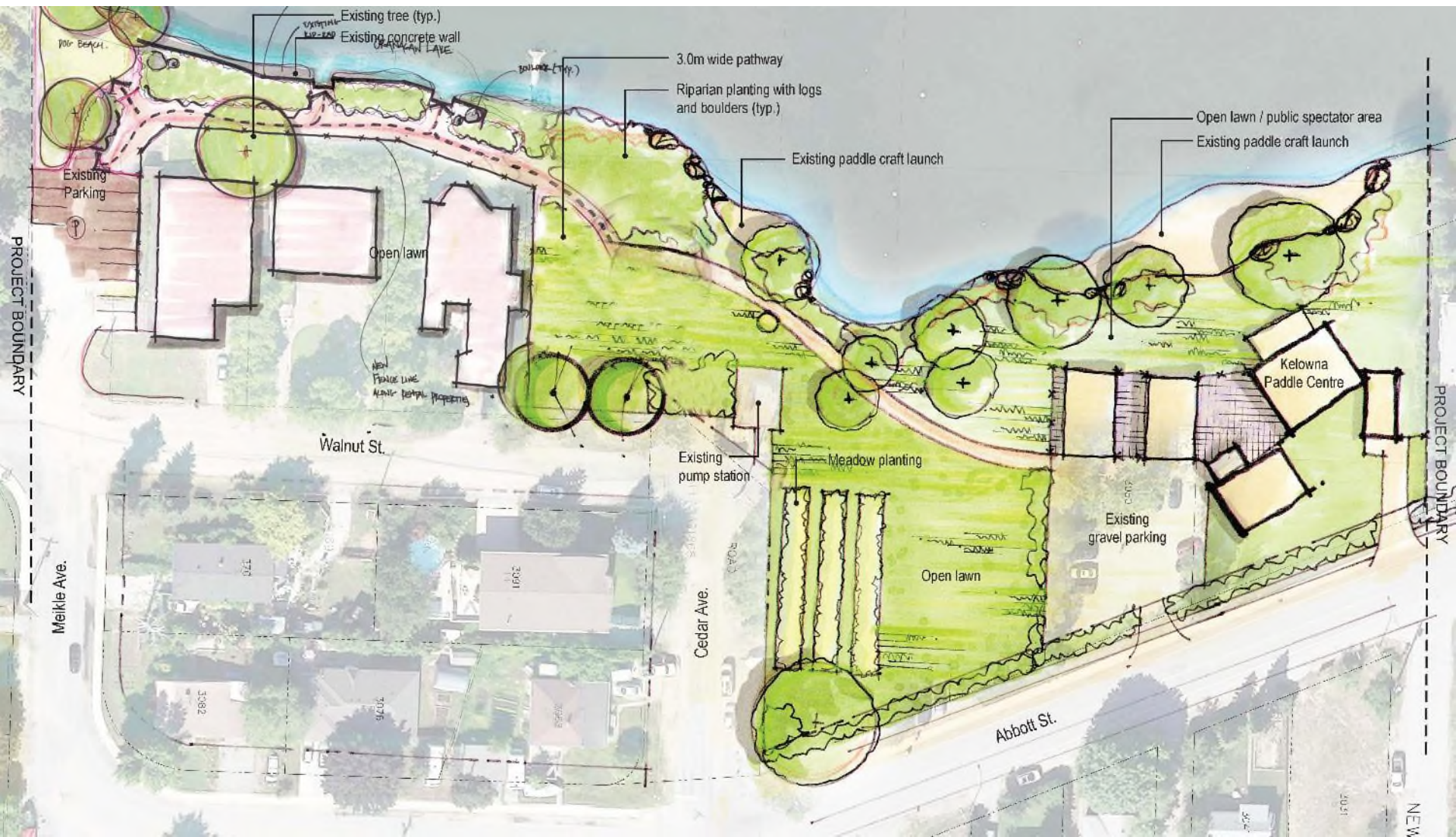
## ► Kelowna Paddle Centre



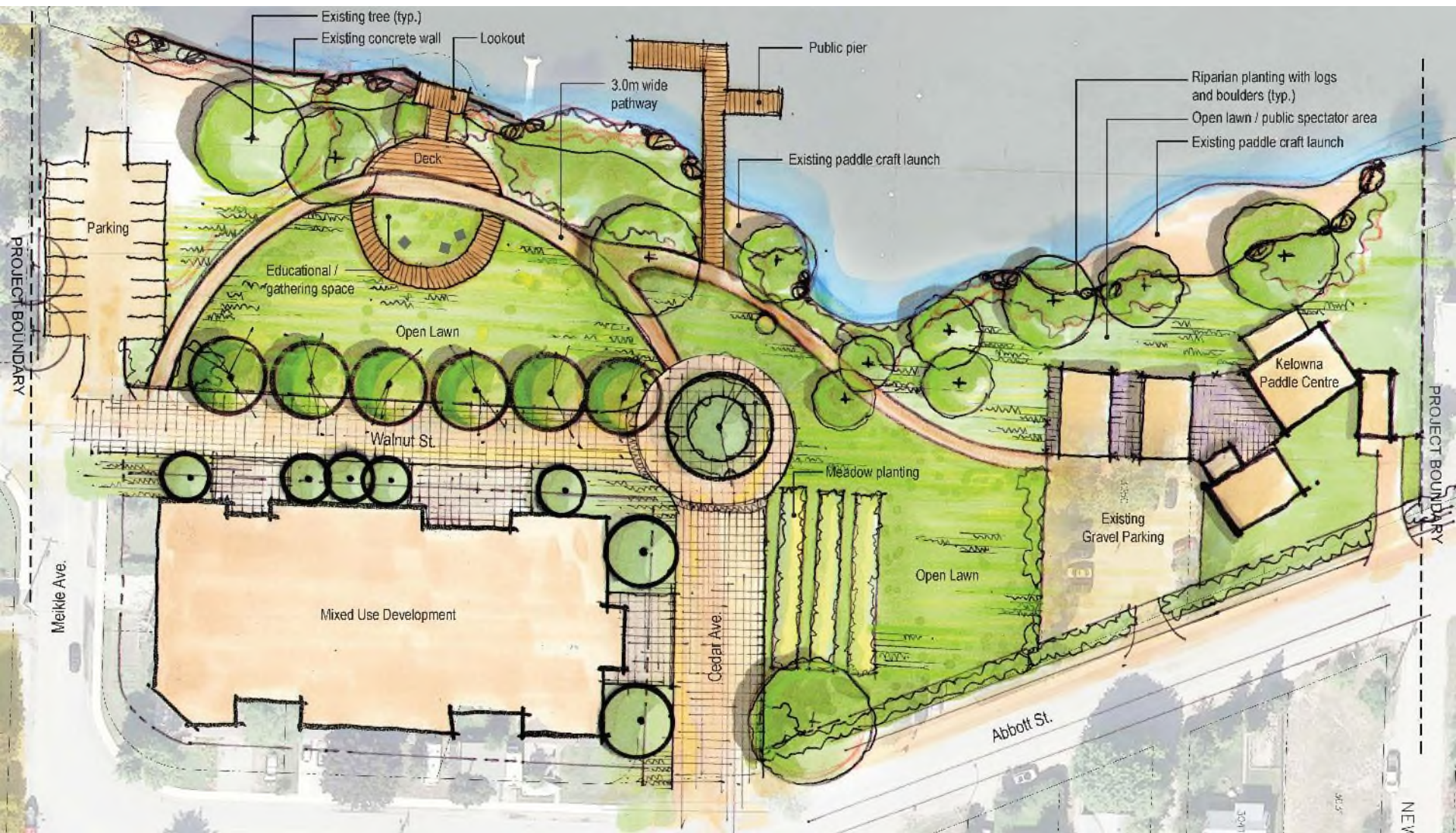










Pandosy Waterfront Park – Partial interim plan



Pandosy Waterfront Park – Full build Option 1



-  Properties with recent improvements
-  Properties to be improved or demolished





- ▶ Council directs staff to develop a Memorandum of Understanding with KLO Neighbourhood Association to allow them to commence fund-raising for interim access to Pandosy Waterfront Park;
- ▶ Council directs staff to exclude an off-leash dog beach as part of the Interim Park Access plan for Pandosy Waterfront Park





*Questions?*

For more information, visit [kelowna.ca](http://kelowna.ca).