

CITY OF KELOWNA

BYLAW NO. 11433

Official Community Plan Amendment No. OCP17-0010 1350 & 1370 KLO Road

A bylaw to amend the "Kelowna 2030 – Official Community Plan Bylaw No. 10500".

The Municipal Council of the City of Kelowna, in open meeting assembled, enacts as follows:

1. THAT Map 4.1 - **GENERALIZED FUTURE LAND USE** of "Kelowna 2030 – Official Community Plan Bylaw No. 10500" be amended by changing the Generalized Future Land Use designation of:
 - a) Lot 15, District Lot 131, ODYD, Plan 10710 Except Plan KAP79079 located on KLO Road, Kelowna, B.C., from the S2RES – Single /Two Unit Residential designation to the MRM – Multiple Unit Residential (Medium Density) designation; and
 - b) a portion of Lot 1 District Lot 131 ODYD Plan 27982 Except Plan KAP57931, located on KLO Road, Kelowna, B.C., from the EDINST – Educational/Major Institutional designation to the Major Park/Open Space (public) (PARK) and MRM – Multiple Unit Residential (Medium Density) designation as per Map A attached to and forming part of this bylaw.
2. This bylaw shall come into full force and effect and is binding on all persons as and from the date of adoption.

Read a first time by the Municipal Council this 26th day of June, 2017.

Amended at first reading by the Municipal Council this 10th day of July, 2017.

Considered at a Public Hearing on the 25th day of July, 2017.

Read a second and third time by the Municipal Council this 25th day of July, 2017.

Adopted by the Municipal Council of the City of Kelowna this

Mayor

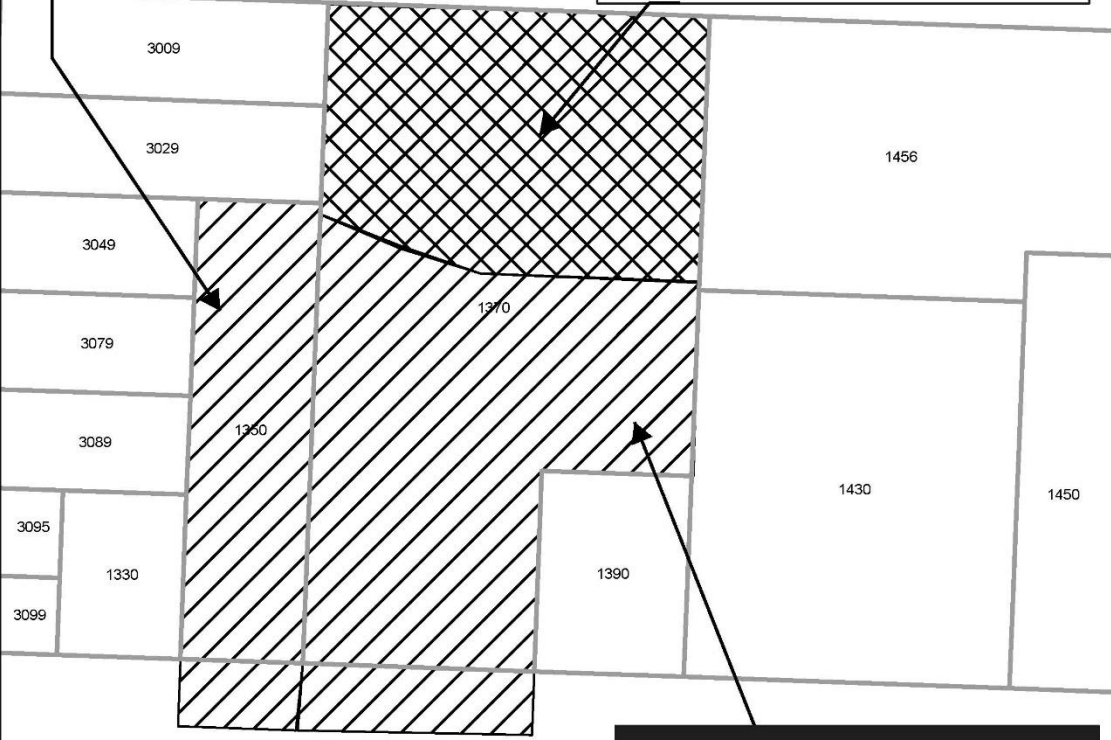
City Clerk



1255-1260



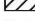
Subject Property Notes:
 Amend the OCP of the subject property from Single/Two Unit Residential (S2RES) to Multiple Unit Residential (Medium Density) (MRM).

Subject Property Note:
 Amend the OCP for a portion of the subject property from Education/Major Institutional (EDINST) to Major Park/Open Space (public) (PARK).



Subject Property Notes:
 Amend the OCP for a portion of the subject property from Education/Major Institutional (EDINST) to Multiple Unit Residential (Medium Density)(MRM).

**MAP "A" OCP AMENDMENT
 OCP17-0010**

-  EDINST to PARK
-  EDINST to MRM
-  S2RES to MRM

This map is for general information only. The City of Kelowna does not guarantee its accuracy. All information should be verified.



Rev. Thursday, July 06, 2017