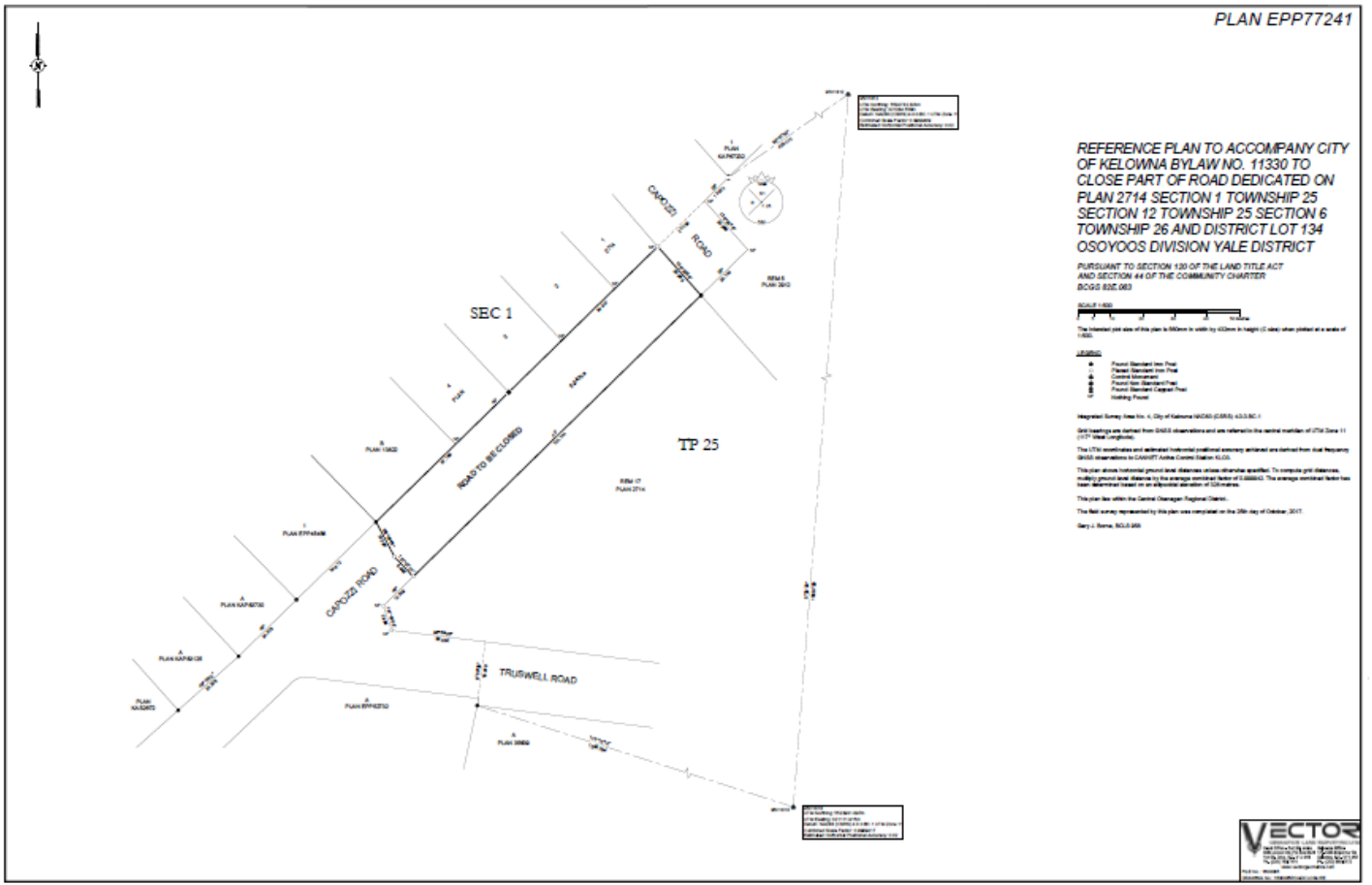


# Schedule A

PLAN EPP77241



**REFERENCE PLAN TO ACCOMPANY CITY OF KELOWNA BYLAW NO. 11330 TO CLOSE PART OF ROAD DEDICATED ON PLAN 2714 SECTION 1 TOWNSHIP 25 SECTION 12 TOWNSHIP 25 SECTION 6 TOWNSHIP 26 AND DISTRICT LOT 134 OSOYOOS DIVISION YALE DISTRICT**

PURSUANT TO SECTION 120 OF THE LAND TITLE ACT AND SECTION 44 OF THE COMMUNITY CHARTER  
BOOK 806 963

SCALE 1:500  
The intended use of this plan is shown in units of centimeters (or inches) when printed at a scale of 1:500.

**LEGEND**

- Found Standard Iron Nail
- Found Standard Iron Nail
- Found Standard Iron Nail
- Found Standard Iron Nail
- Found Standard Iron Nail
- Found Standard Iron Nail

Magnetic Survey done for A. City of Kelowna (OSO) (S&M) S.S.B.C.

Site readings were taken from GNSS observations and are related to the natural magnetic declination of the date of observation.  
The UTM coordinates and adjusted horizontal positions are based on the NAD83 datum (horizontal) and the datum of the observations.  
This plan shows horizontal ground line distances unless otherwise specified. To compute grid distances, multiply ground line distances by the average cosines factor of 0.999961. The average cosines factor has been determined based on an elevation difference of 0.000000m.

This plan was filed in the Central Okanagan Regional District.  
The plan survey represented by this plan was completed on the 20th day of October, 2017.  
Gary J. Stone, S.O.B. 000

