



# Laurel Packinghouse Courtyard Budget Transfer Request

October 2, 2017



# Background

- ▶ Partnership with Kelowna Museums Society (KMS)
  - ▶ Heritage programming
  - ▶ Kelowna Cultural District
- ▶ 2017 Capital project
  - ▶ \$165,000 capital funding
  - ▶ \$150,000 partnership with KMS
  - ▶ \$150,000 anticipated grant funding

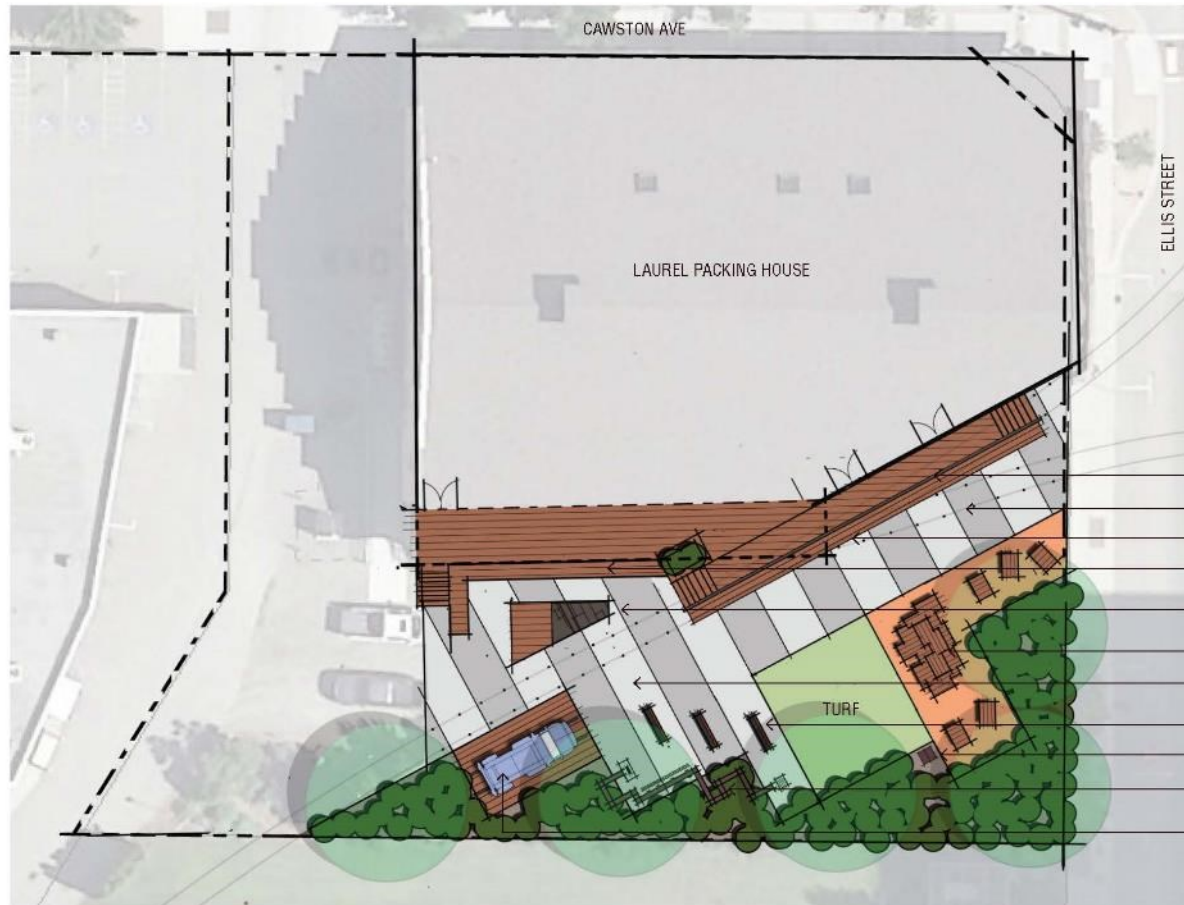
# Funding

- ▶ Grant applications to date
  - ▶ Canada 150 – Community Infrastructure Program
    - ▶ Submitted by KMS | \$150,000 ask
    - ▶ Funding was unsuccessful
  - ▶ Canada 150 – B.C. Museums Association
    - ▶ Submitted by City planning staff | \$100,000
    - ▶ Funding was unsuccessful

# Funding

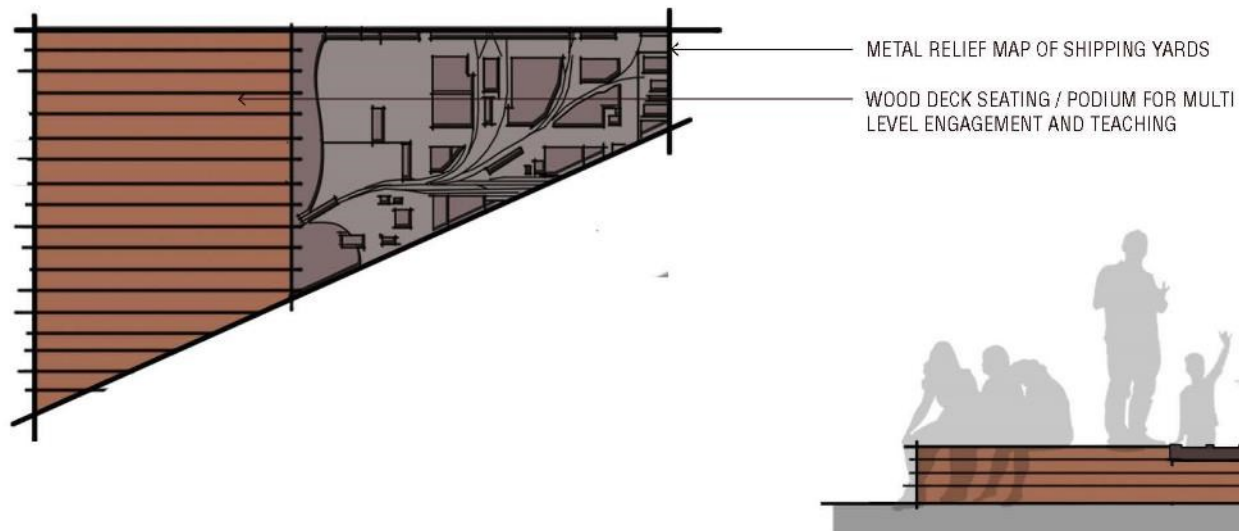
## ▶ Current opportunities

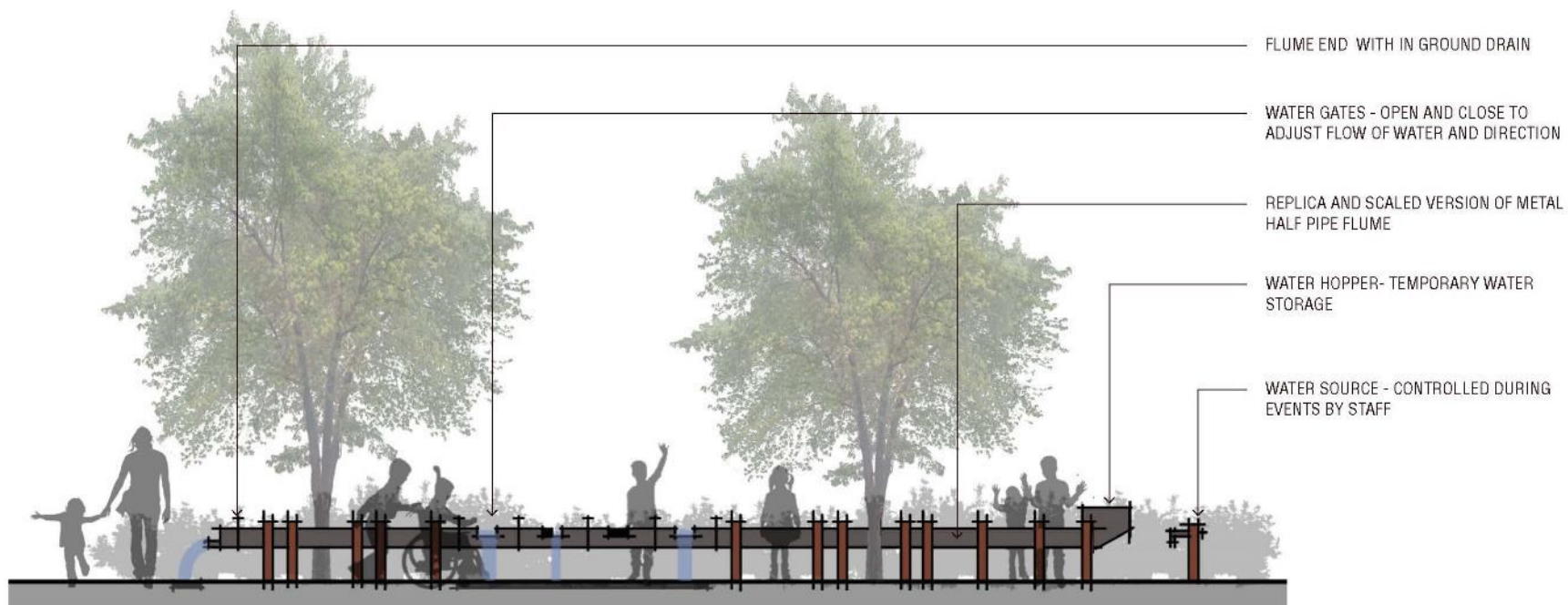
- ▶ Community Gaming Grants Capital Projects Program
  - ▶ KMS will submit application
  - ▶ Maximum ask of \$250,000
- ▶ Canada Cultural Spaces Fund (federal Department of Canadian Heritage)
  - ▶ City or KMS could apply for up to 50% of total project costs related to infrastructure and equipment which supports professional arts and/or heritage activities



- METAL PICKET RAIL WITH WOOD DETAILING
- FLUSH MOUNTED "SPIKES" (HISTORIC RAIL LINE)
- CANTILEVERED SEATING AND HISTORIC IMAGING
- WOOD DECK/ GROUP SEATING
- RAIL YARD MAP
- APPLE BOX FEATURE ON RUBBERIZED SAFETY SURFACE
- SANDBLASTED CONCRETE
- BENCH SEATING
- INTERACTIVE INSECT HOTEL AND INDIGENOUS PLANTING
- IRRIGATION FLUME
- CHAPMAN SWITCHING TRUCK (1945)







# Capital Opportunities & Partnership Program

- ▶ Kelowna United Soccer Facility
  - ▶ Funded in this stream per 2016 capital budget
  - ▶ Preliminary site preparation and grading completed
    - ▶ No site servicing
    - ▶ Surface landscape treatment remains (hydroseeding, or sim.)
  - ▶ Proposed budget transfer of \$200,000 to Laurel Courtyard Project
  - ▶ If staff is successful in receiving grant funding, budget will be held in reserve



# Recommendation

- ▶ THAT Council authorize the transfer of \$200,000 from the Capital Opportunities and Partnerships Program to the Laurel Packinghouse Courtyard project



*Questions?*

For more information, visit [kelowna.ca](http://kelowna.ca).