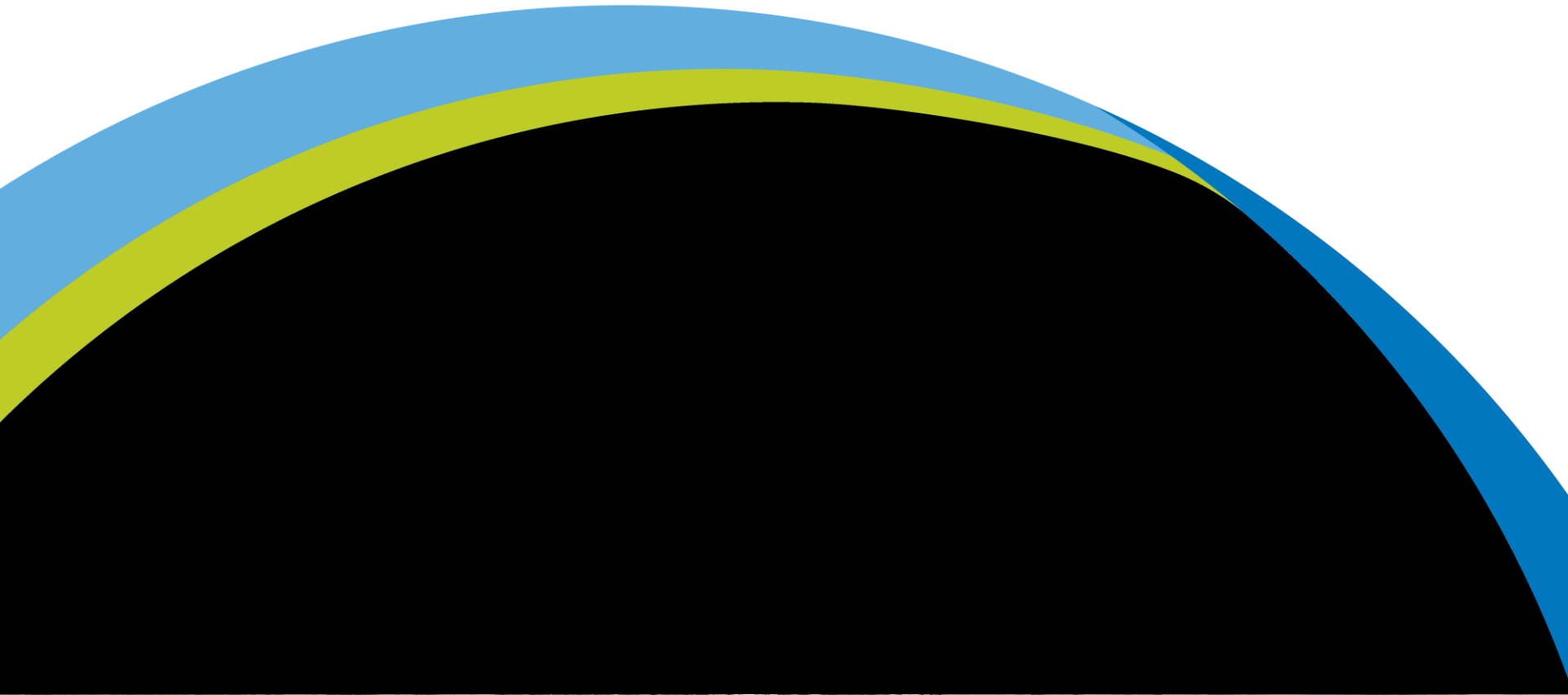


**GLENMORE LANDFILL  
FILL PLAN 2017**



## OUTLINE

- ▶ What we have (current fill plan)
- ▶ What we propose
- ▶ What is next

## WHAT WE HAVE

- ▶ Current Fill Plan ~ 19 Million m<sup>3</sup> remaining (~16 Million tonnes)
- ▶ Opportunities for increasing
- ▶ Little time remaining for fill areas under “do nothing” scenario
  - ▶ Drives need for decisions and investments over next 6-8 years

## WHAT ARE WE PROPOSING TO CHANGE TO OUR FILL PLAN

- ▶ Increase height of northern section, includes increasing slopes (3.26:1) from 5:1
- ▶ Increase the overall height of the landfill by 20m
- ▶ Blend the slopes into the existing Bredin Hill and Tutt Mountain

## WHAT ARE WE PROPOSING TO CHANGE TO OUR FILL PLAN

- ▶ 18.3 Million m<sup>3</sup> (15.5 M Tonnes) of landfill space will be created.
- ▶ Extend landfill life 25 years
  - ▶ To year 2090 from 2065)
- ▶ Same landfill footprint

## WHY ARE WE PROPOSING TO CHANGE TO OUR FILL PLAN?

- ▶ Adding capacity to similar footprint reduces costs and impacts per tonne - *better value* for City
- ▶ Landfilling is inexpensive. Costs to ship wastes out of region or alternative methods have much higher costs
  - ▶ E.g. \$32 / tonne increase means \$500 million cost to local economy over 25 years
- ▶ Additional volume worth \$1 Billion at \$65/tonne
  - ▶ *Stays in local economy*

# Existing Fill Plan -



Bredin Hill

Tutt Mountain

# Proposed Fill Plan

Increase slope from 5:1  
to 3:1

Raised Elevation to Match  
Tutt Mt.

Blends with Tutt Mt.  
and Bredin Hill





## PUBLIC CONSULTATION

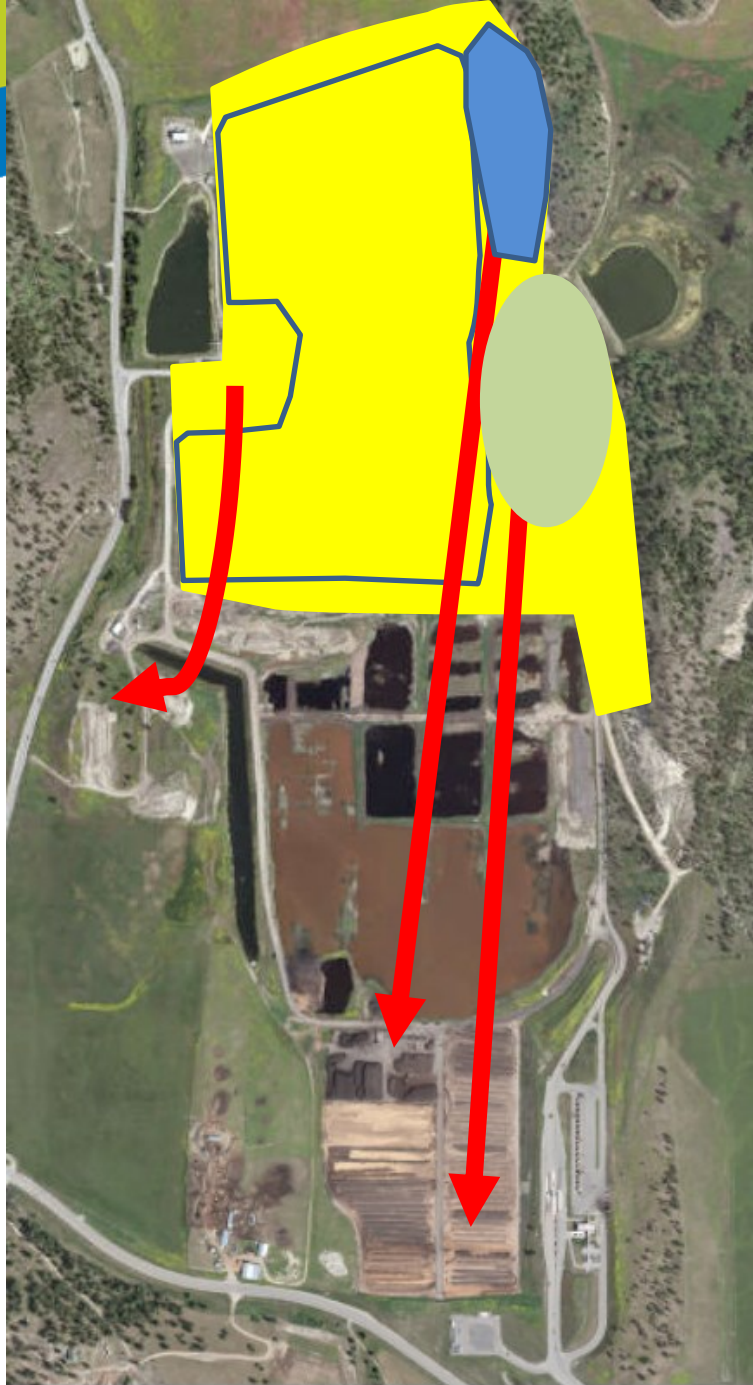
- ▶ Feb 21, 2017 Open house at landfill
  - ▶ 1600 invitations mailed out to neighbours and stakeholders
  - ▶ Ads in newspapers, social media, electronic sign boards
  - ▶ 70 attendees
- ▶ Online survey until March 3, 2017

## PUBLIC CONSULTATION

- ▶ Of the respondents who provided feedback, 60 percent responded favourably
- ▶ 24 percent expressed concerns regarding odour management and proximity to Quail Ridge residential development
- ▶ A number of Okanagan Naturalists attended and asked about bird watching

# WHAT IS NEXT









McKinley Landing

Lightblue Lake

McKinley Reservoir