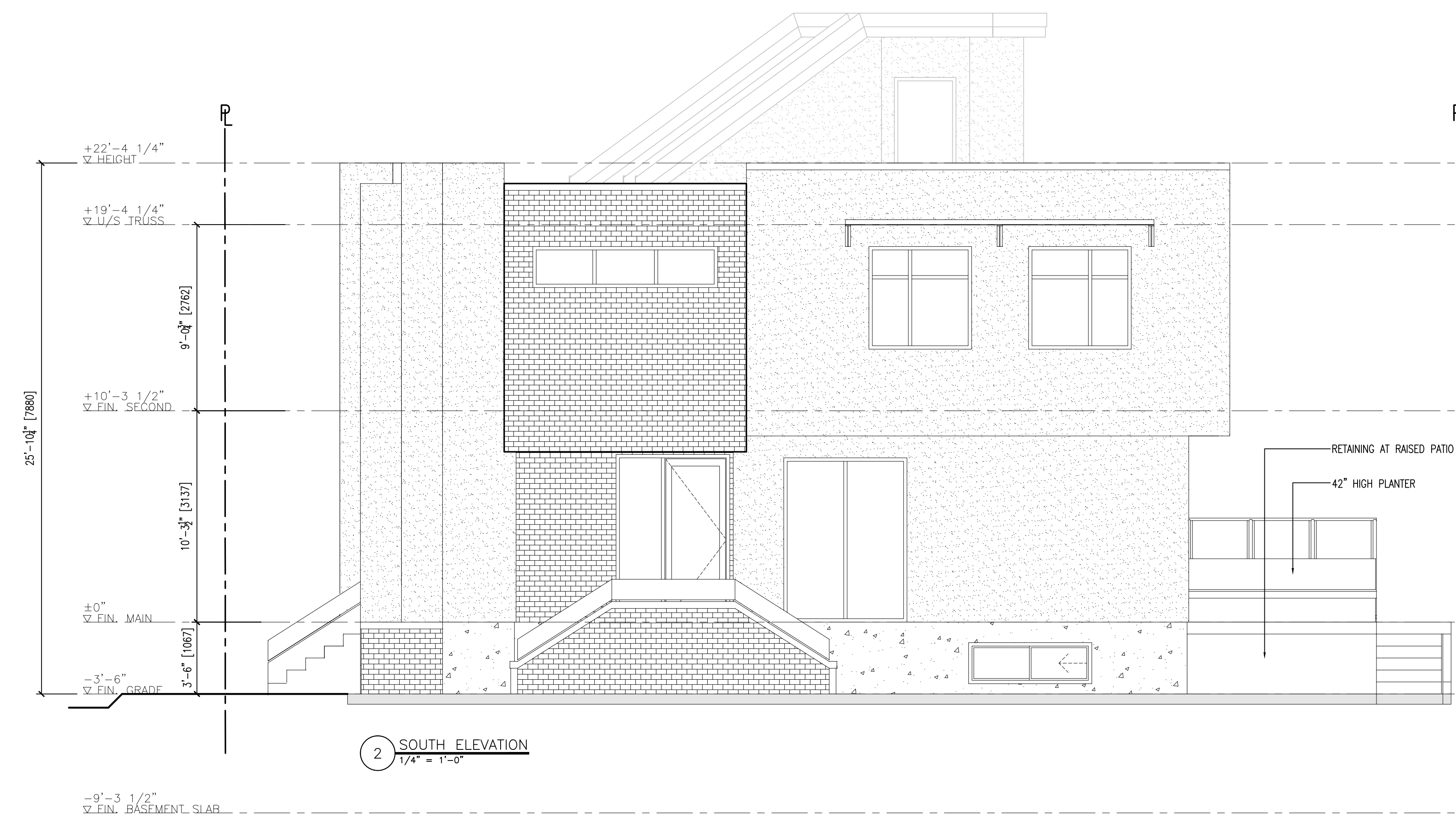


COPYRIGHT. ALL RIGHTS RESERVED
All ideas, designs, drawings and specifications are the exclusive property of Architecturally Distinct Solutions Inc. As instruments of service, they may not be used or reproduced in any manner without the expressed written consent of Architecturally Distinct Solutions Inc. All Contracting Trades shall check and verify all levels, dimensions, data and conditions on the site prior to commencement of any work. Any discrepancies are to be reported immediately to Architecturally Distinct Solutions Inc. Do not scale any dimensions from this drawing.

All trades are to execute the work in accordance with the current municipality building by-laws and requirements of other local authorities having jurisdiction as well as the British Columbia Building Code - (most recent edition) including all pertinent revisions and addenda. All trades shall assume full responsibility for the location and protection of all under and above ground utilities, wires and conduit connections, including (but not limited to) water, sewer, gas, hydro and telephone.



1 WEST ELEVATION
1/4" = 1'-0"



2 SOUTH ELEVATION
1/4" = 1'-0"



MATERIAL LEGEND:

1. PRE-FIN. METAL/ALUMINUM WOOD SERIES PANELS
2. BRICK VENEER
3. ACRYLIC STUCCO
4. METAL CLAD WINDOWS (BLACK)
5. FIBREGLASS EXTERIOR DOOR (STAIN GRADE)
6. PRE-FIN. METAL CAP FLASHING
7. BLACK ALUMINUM RAILING SYSTEM
8. ROOF ACCESS (STUCCO/SLOPED CHARCOAL ASPHALT SHINGLES/PAINTED SMART BOARD FASCIA)

Revision No., Date and Description
03.24.17-PROGRESS DWGS
04.03.17-PROGRESS REVS
04.23.17-DP REVIEW

Plot Date	Drawing No.
8-May-17	A-200

PROJECT
2825 RICHTER STREET

DRAWING TITLE
ELEVATIONS

FOR DP