

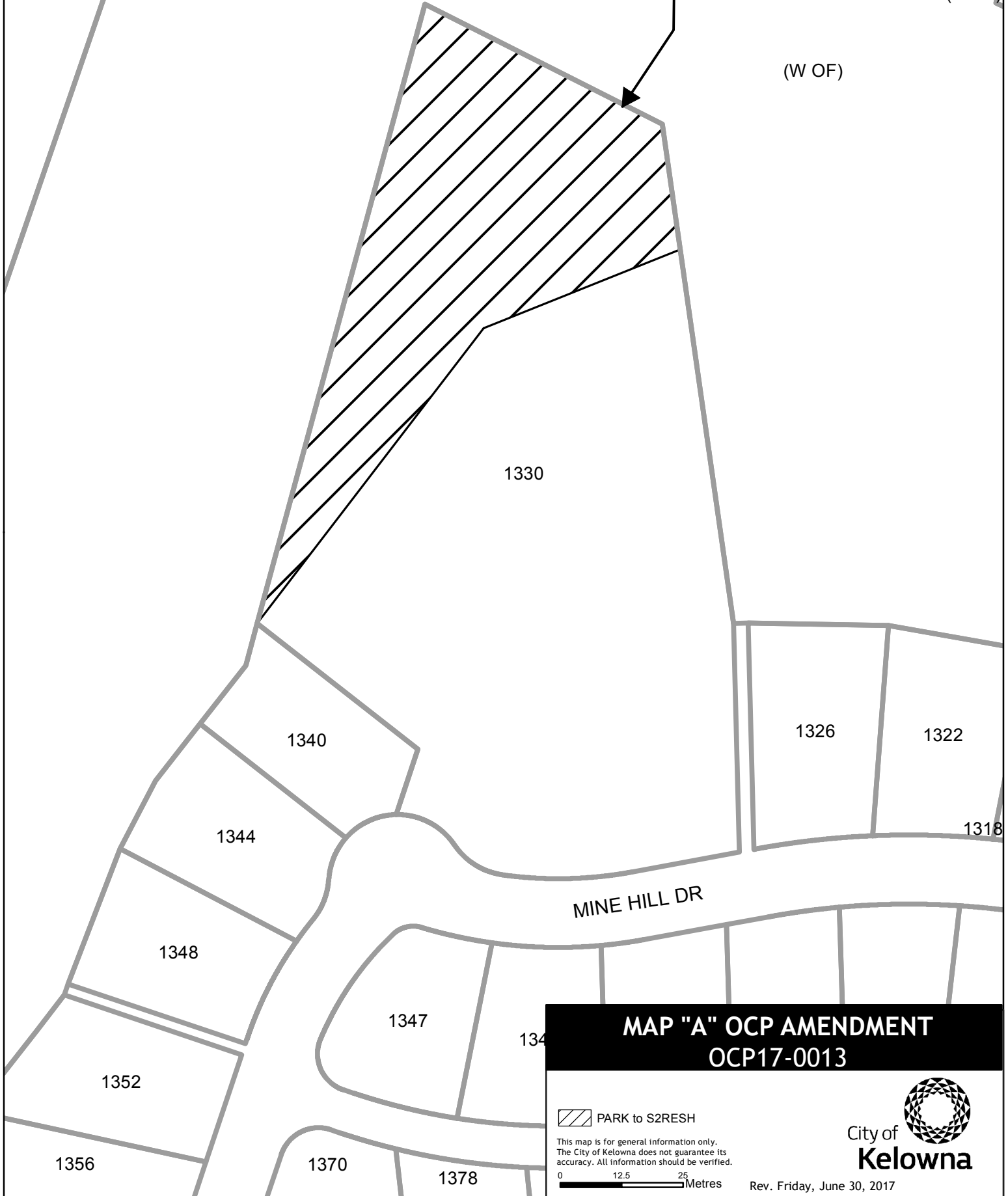
685

Subject Property Notes:

Amend the OCP for a portion of the subject property from Major Park and Open Space (PARK) to Single/Two Unit Residential - Hillside (S2RESH).



(W OF)



1330

1340

1326

1322

1344

1318

1348

MINE HILL DR

1347

134

**MAP "A" OCP AMENDMENT
OCP17-0013**

 PARK to S2RESH

This map is for general information only.
The City of Kelowna does not guarantee its
accuracy. All information should be verified.

0 12.5 25 Metres



City of
Kelowna

Rev. Friday, June 30, 2017

RU1H

Subject Property Notes:

Rezone a portion of the subject properties from RU4h Low Density Cluster Housing (Hillside Area) to RU1h Large Lot Housing (Hillside Area).




P3

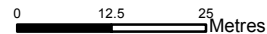
RU4H

MINE HILL DR

**MAP "B" PROPOSED ZONING
Z16-0079**

 RU4h to RU1h

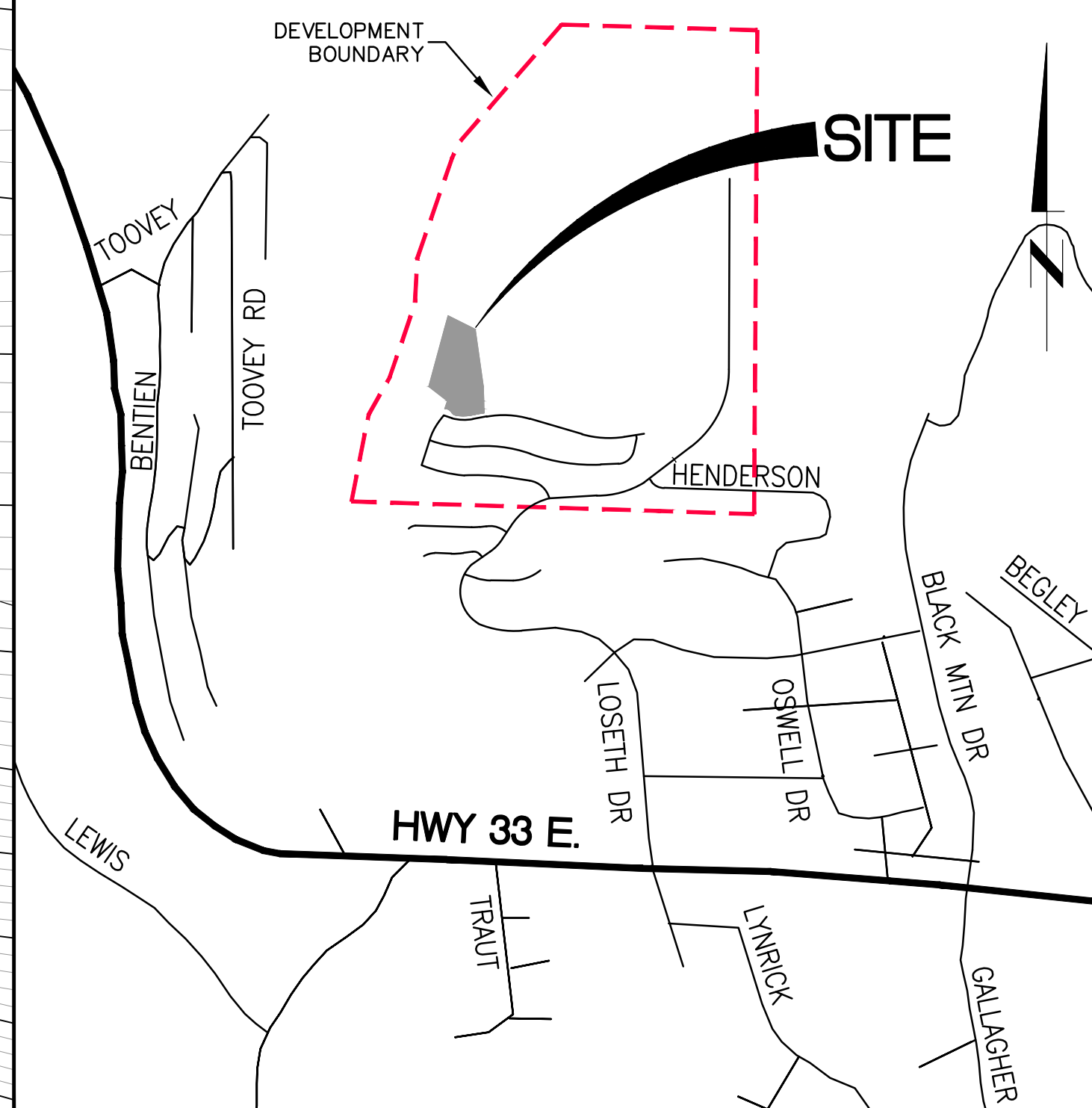
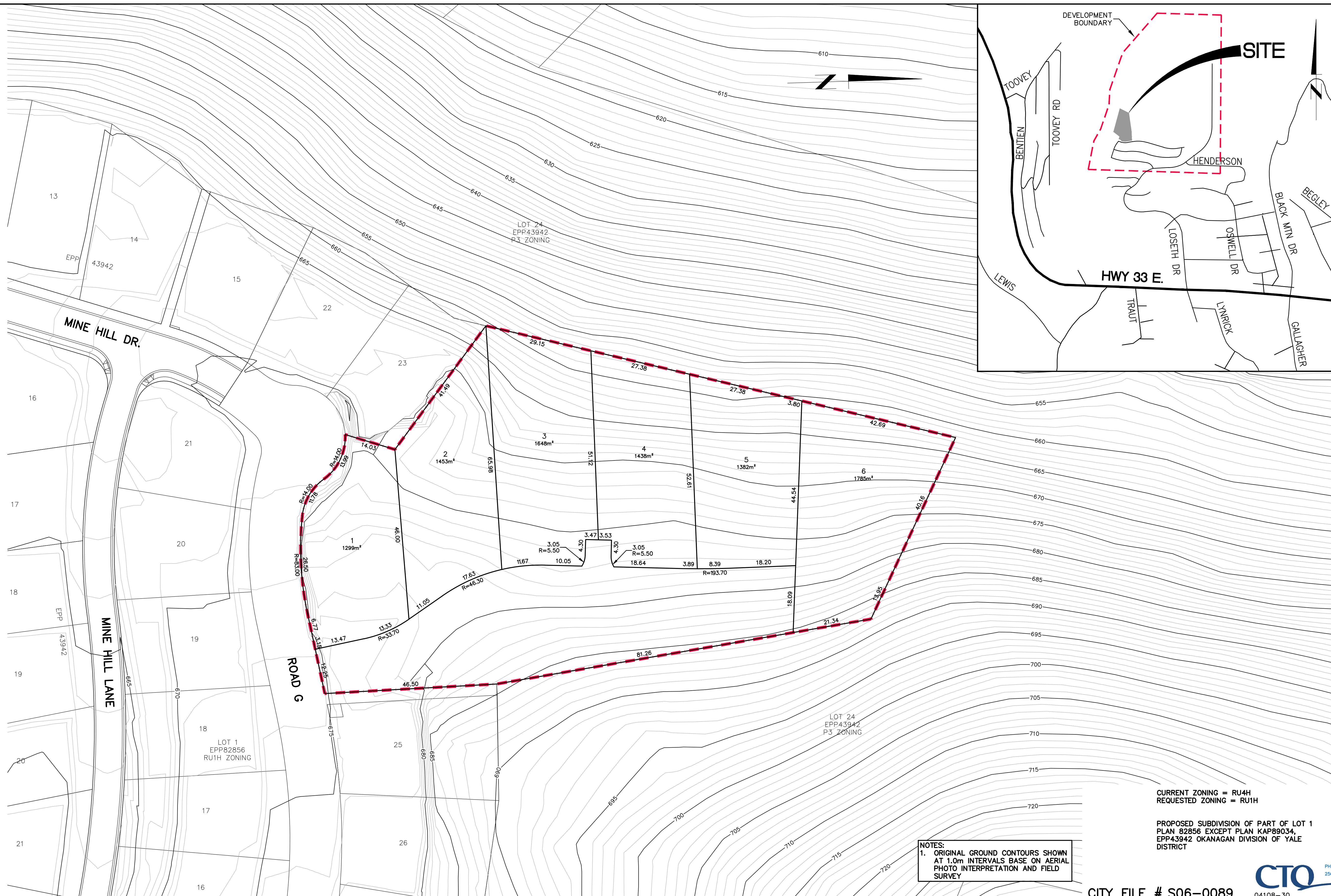
This map is for general information only. The City of Kelowna does not guarantee its accuracy. All information should be verified.



City of
Kelowna

Rev. Friday, June 30, 2017

L:\General Data\Projects\04108-30 - Prospect Phase 3\4-CAD DESIGN-SET\PLR\04108-30-PLR-302.dwg August 11, 2016 Justin VornPashuk



CURRENT ZONING = RU4H
REQUESTED ZONING = RU1H

PROPOSED SUBDIVISION OF PART OF LOT 1
PLAN 82856 EXCEPT PLAN KAP89034,
EPP43942 OKANAGAN DIVISION OF YALE
DISTRICT

NOTES:
1. ORIGINAL GROUND CONTOURS SHOWN
AT 1.0m INTERVALS BASE ON AERIAL
PHOTO INTERPRETATION AND FIELD
SURVEY

CITY FILE # S06-0089 04108-30



THE CITY OF KELOWNA
ENGINEERING DEPARTMENT
PROSPECT AT BLACK MOUNTAIN
PHASE 3
PRELIMINARY LAYOUT REVIEW
LOT 24

Division
MUNICIPAL
Drawing No. PLR-302
Rev No. 0

Legend

No.	YY.MM.DD	By	Issued	Chkd	No.	YY.MM.DD	By	Revision	Chkd
1	XX.XX.XX	MC	PRELIMINARY LAYOUT REVIEW	HB					

Drawn	TF
Design	MC/TF
Approved	
Date	JUNE 2016
Scale	1:500

PRELIMINARY LAYOUT REVIEW