

**CITY OF KELOWNA**

**BYLAW NO. 11441**

**Road Closure and Removal of Highway Dedication Bylaw**  
**(Portion of Clifton Road North)**

**A bylaw pursuant to Section 40 of the Community Charter to authorize the City to permanently close and remove the highway dedication of a portion of highway on Clifton Road North**

---

NOW THEREFORE, the Municipal Council of the City of Kelowna, in open meeting assembled, hereby enacts as follows:

1. That portion of highway attached as Schedule "A" comprising Closed Road shown in bold black as 787.0m<sup>2</sup> on the Reference Plan prepared by Colin Ferguson, B.C.L.S., is hereby stopped up and closed to traffic and the highway dedication removed.
2. The Mayor and City Clerk of the City of Kelowna are hereby authorized to execute such conveyances, titles, survey plans, forms and other documents on behalf of the said City as may be necessary for the purposes aforesaid.

Read a first, second and third time by the Municipal Council this 10<sup>th</sup> day of July, 2017.

Adopted by the Municipal Council of the City of Kelowna this

---

Mayor

---

City Clerk

Bylaw No. 11441 - Page 2

Schedule "A"

REFERENCE PLAN TO ACCOMPANY CITY OF KELOWNA ROAD CLOSURE AND REMOVAL OF HIGHWAY DEDICATION BYLAW No. 11441 OF PART OF ROAD DEDICATED BY PLAN 28178 SECTION 8 TOWNSHIP 23 ODYD

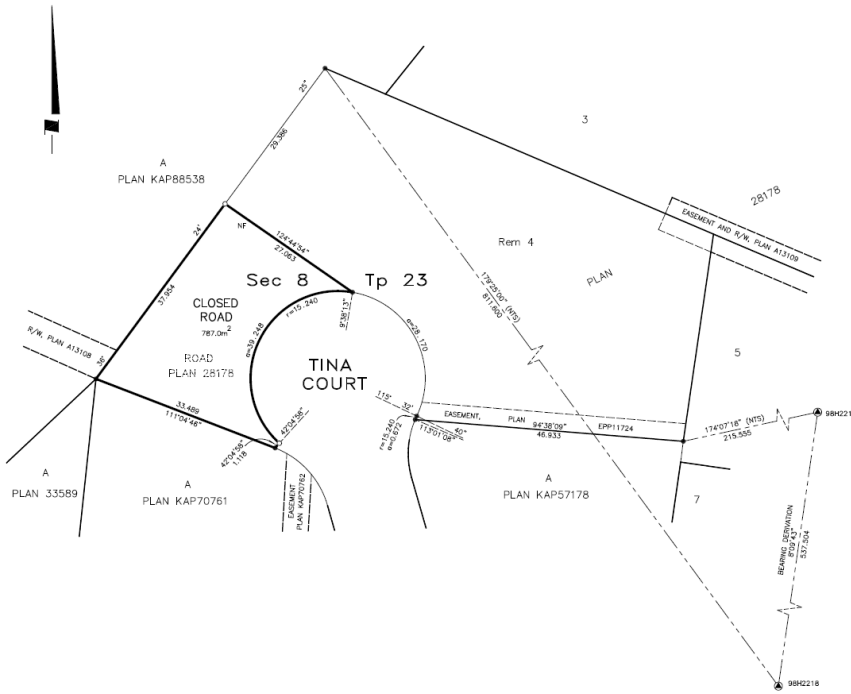
PLAN EPP73624

PURSUANT TO SECTION 120 OF THE LAND TITLE ACT AND SECTION 40 OF THE COMMUNITY CHARTER

BCGS 82E.093



THE INTENDED PLOT SIZE OF THIS PLAN IS 565mm IN WIDTH BY 432mm IN HEIGHT (C SIZE) WHEN PLOTTED AT A SCALE OF 1:400



**GEODEIC TABLE OF COORDINATES**

MONUMENT	UTM ZONE	UTM COORDINATES	ESTIMATED HORIZONTAL POSITIONAL ACCURACY
98H2218	48QUB	323428.303	0.9999106 0.02
98H2219	48QUB	323505.607	0.9999079 0.03

**LEGEND**

INTEGRATED SURVEY AREA NO. 4, CITY OF KELOWNA, NAD83 (CSRS) 4.0.G.B.C.1

GRID BEARINGS ARE DERIVED FROM OBSERVATIONS BETWEEN GEODEIC CONTROL MONUMENTS 98H2218 AND 98H2219.

THE UTM COORDINATES AND ESTIMATED HORIZONTAL POSITIONAL ACCURACY ARE DERIVED FROM THE HASCOT PUBLISHED COORDINATES AND STANDARD DEVIATIONS FOR GEODEIC CONTROL MONUMENTS 98H2218 AND 98H2219.

THIS PLAN SHOWS HORIZONTAL GROUND-LEVEL DISTANCES UNLESS OTHERWISE SPECIFIED TO COMPUTE GRID DISTANCES. MULTIPLE GROUND-LEVEL DISTANCES BY THE AVERAGE COMBINED FACTOR OF 0.9999053 WHICH HAS BEEN DERIVED FROM GEODEIC CONTROL MONUMENTS 98H2218 AND 98H2219.

- DENOTES CONTROL MONUMENT FOUND
- DENOTES STANDARD IRON POST FOUND
- DENOTES STANDARD IRON POST SET
- NTS DENOTES NOT TO SCALE

THIS PLAN LIES WITHIN THE REGIONAL DISTRICT OF CENTRAL OKANAGAN.

THE FIELD SURVEY REPRESENTED BY THIS PLAN WAS COMPLETED ON THE 29th DAY OF JUNE, 2017  
COLIN FERGUSON, B.C.L.S. 858

Ferguson Land Surveying & Geomatics Ltd.  
B.C. AND CANADA LAND SURVEYORS  
404-1830 PANDOSY STREET, KELOWNA, B.C.  
TELEPHONE: (250) 763-3115 FAX: (250) 763-0321

JOB No 20685-REF  
© 2008 FERGUSON LTD. 2008-06-29/2017-06-29/2017-06-29  
DRAFT BY: CF PLAN FILE