

CITY OF KELOWNA

BYLAW NO. 11441

Road Closure and Removal of Highway Dedication Bylaw **(Portion of Clifton Road North)**

A bylaw pursuant to Section 40 of the Community Charter to authorize the City to permanently close and remove the highway dedication of a portion of highway on Clifton Road North

NOW THEREFORE, the Municipal Council of the City of Kelowna, in open meeting assembled, hereby enacts as follows:

1. That portion of highway attached as Schedule "A" comprising Closed Road shown in bold black as 787.0m² on the Reference Plan prepared by Colin Ferguson, B.C.L.S., is hereby stopped up and closed to traffic and the highway dedication removed.
2. The Mayor and City Clerk of the City of Kelowna are hereby authorized to execute such conveyances, titles, survey plans, forms and other documents on behalf of the said City as may be necessary for the purposes aforesaid.

Read a first, second and third time by the Municipal Council this

Adopted by the Municipal Council of the City of Kelowna this

Mayor

City Clerk

Bylaw No. 11441 - Page 2

Schedule "A"

REFERENCE PLAN TO ACCOMPANY CITY OF KELOWNA ROAD CLOSURE
AND REMOVAL OF HIGHWAY DEDICATION BYLAW No. 11441 OF PART
OF ROAD DEDICATED BY PLAN 28178 SECTION 8 TOWNSHIP 23 ODYD

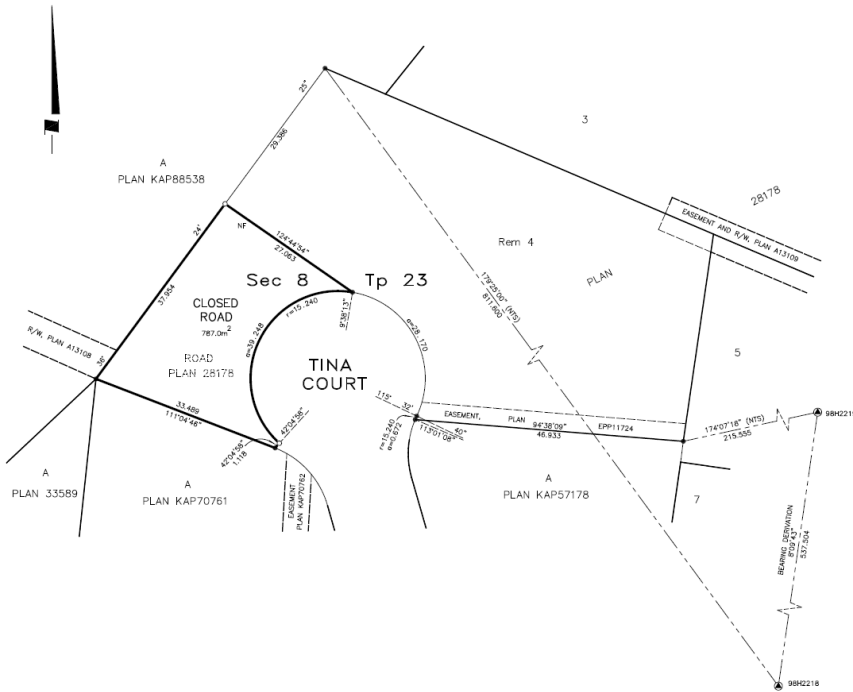
PLAN EPP73624

PURSUANT TO SECTION 120 OF THE LAND TITLE ACT AND SECTION 40 OF THE COMMUNITY CHARTER

BCGS 82E.093

10 20 30 40 50 METRES

THE INTENDED PLOT SIZE OF THIS PLAN IS 569mm IN WIDTH BY 432mm IN HEIGHT (C SIZE) WHEN PLOTTED AT A SCALE OF 1:400



GEODETIC TABLE OF COORDINATES

CM	EASTING	NORTHING	UTM ZONE 11 COORDINATES
98H2218	323428.303	534799.188	46.0.BC.1
98H2219	323505.607	533831.179	46.0.BC.1

LEGEND

INTEGRATED SURVEY AREA NO. 4, CITY OF KELOWNA,
NAD83 (CSRS) 4.0.G.BC.1
GRID BEARINGS ARE DERIVED FROM OBSERVATIONS
BETWEEN GEODETIC CONTROL MONUMENTS 98H2218 AND
98H2219.
THE UTM COORDINATES AND ESTIMATED HORIZONTAL
POSITIONAL ACCURACY ARE DERIVED FROM THE HASCOPT
PUBLISHED COORDINATES AND STANDARD DEVIATIONS FOR
GEODETIC CONTROL MONUMENTS 98H2218 AND 98H2219.
THIS PLAN SHOWS HORIZONTAL GROUND-LEVEL
DISTANCES UNLESS OTHERWISE SPECIFIED. TO COMPUTE
GRID DISTANCES, MULTIPLY GROUND-LEVEL DISTANCES
BY THE AVERAGE COMBINED FACTOR OF 0.9999053
WHICH HAS BEEN DERIVED FROM GEODETIC CONTROL
MONUMENTS 98H2218 AND 98H2219.

● DENOTES CONTROL MONUMENT FOUND
● DENOTES STANDARD IRON POST FOUND
○ DENOTES STANDARD IRON POST SET
NTS DENOTES NOT TO SCALE

THIS PLAN LIES WITHIN THE REGIONAL DISTRICT OF
CENTRAL OKANAGAN.

THE FIELD SURVEY REPRESENTED BY THIS PLAN WAS
COMPLETED ON THE 29TH DAY OF JUNE, 2017
COLIN FERGUSON, B.C.L.S. 858

Ferguson Land Surveying & Geomatics Ltd.
B.C. AND CANADA LAND SURVEYORS
404-1630 PANDOSY STREET, KELOWNA, B.C.
TELEPHONE: (250) 763-3115 FAX: (250) 763-0321

JOB No 20685-REF

3-DRAWN FILE NO. 2000-06-29-2000-06-29-2000-06-29-2000-06-29
DWTS BY: CF PL/PS: SEE FILE