

CITY OF KELOWNA

BYLAW NO. 11362

Road Closure and Removal of Highway Dedication Bylaw
(Portion of Sutherland Avenue)

A bylaw pursuant to Section 40 of the Community Charter to authorize the City to permanently close and remove the highway dedication of a portion of highway on Sutherland Avenue

NOW THEREFORE, the Municipal Council of the City of Kelowna, in open meeting assembled, hereby enacts as follows:

1. That portion of highway attached as Schedule “A” comprising 63.4m² shown in bold black as Closed Lane on the Reference Plan prepared by Colin Ferguson, B.C.L.S., is hereby stopped up and closed to traffic and the highway dedication removed.
2. The Mayor and City Clerk of the City of Kelowna are hereby authorized to execute such conveyances, titles, survey plans, forms and other documents on behalf of the said City as may be necessary for the purposes aforesaid.

Read a first, second and third time by the Municipal Council this

Approved Pursuant to Section 41(3) of the Community Charter this

(Approving Officer-Ministry of Transportation)

Adopted by the Municipal Council of the City of Kelowna this

Mayor

City Clerk

Schedule "A"

REFERENCE PLAN PLAN TO ACCOMPANY CITY OF KELOWNA ROAD CLOSURE AND REMOVAL OF HIGHWAY DEDICATION BYLAW No. 11362 OF PART OF LANE DEDICATED BY PLAN 3286 DISTRICT LOT 139 ODYD PURSUANT TO SECTION 120 OF THE LAND TITLE ACT AND SECTION 40 OF THE COMMUNITY CHARTER

PLAN EPP72040

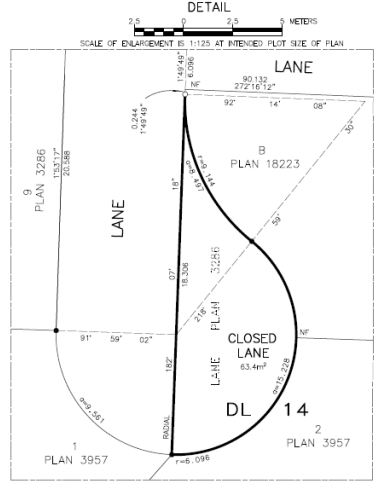
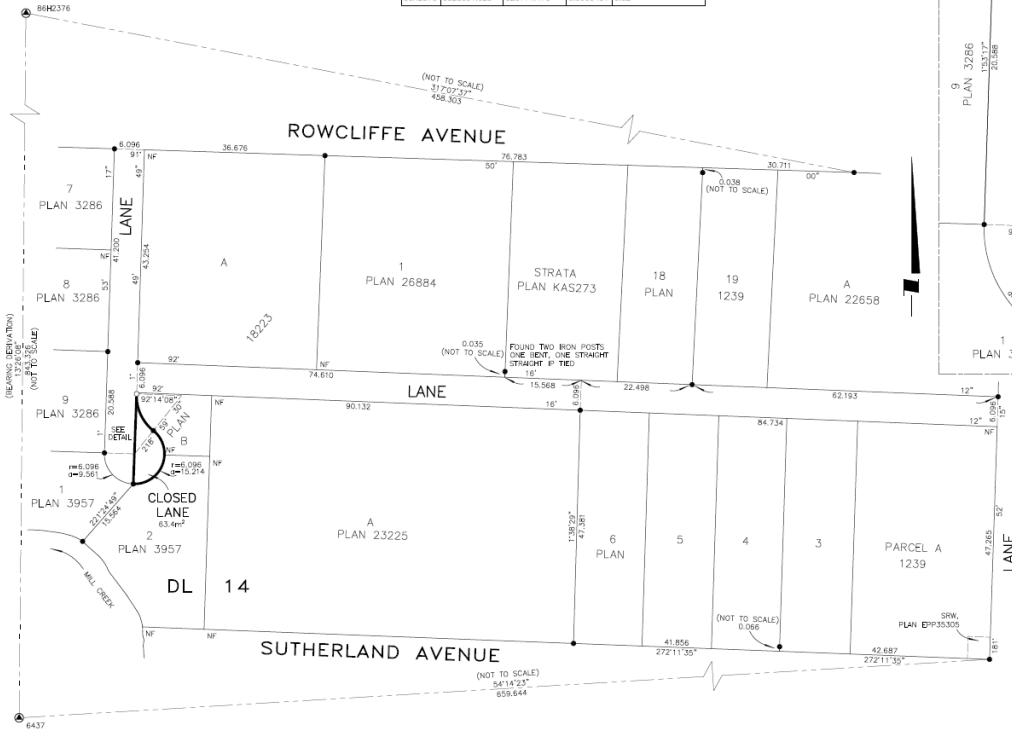
BCGS 82E.083



THE INTENDED PLOT SIZE OF THIS PLAN IS 500mm IN WIDTH BY 430mm IN HEIGHT (C SIZE) WHEN PLOTTED AT A SCALE OF 1:500

GEODETIC TABLE OF COORDINATES

NAD83(CSRS) 4.0.0.BC.1 UTM ZONE 11 COORDINATES				
DCM	NORTHING	EASTING	COMBINED FACTOR	ESTIMATED HORIZONTAL DISTORTION
6437	5527871.423	320578.532	0.9999442	0.03
88H2376	5528691.623	320774.470	0.9999431	0.02



LEGEND
 INTEGRATED SURVEY AREA NO. 4, CITY OF KELOWNA, NAD83 (CSRS) 4.0.0.BC.1
 GRID BEARINGS ARE DERIVED FROM GNSS OBSERVATIONS BETWEEN GEODETIC CONTROL MONUMENTS 6437 AND 88H2376.
 THE UTM COORDINATES AND ESTIMATED HORIZONTAL POSITIONAL ACCURACY ARE DERIVED FROM THE MASCOT PUBLISHED COORDINATES AND STANDARD DEVIATIONS FOR GEODETIC CONTROL MONUMENTS 6437 AND 88H2376.
 THIS PLAN SHOWS HORIZONTAL GROUND-LEVEL DISTANCES UNLESS OTHERWISE SPECIFIED. TO COMPUTE GRID DISTANCES, MULTIPLY GROUND-LEVEL DISTANCES BY THE AVERAGE COMBINED FACTOR OF 0.9999437 WHICH HAS BEEN DERIVED FROM GEODETIC CONTROL MONUMENTS 6437 AND 88H2376.
 ● DENOTES CONTROL MONUMENT FOUND
 ○ DENOTES STANDARD IRON POST FOUND
 ○ DENOTES STANDARD IRON POST SET
 THIS PLAN LIES WITHIN THE REGIONAL DISTRICT OF CENTRAL OKANAGAN.
 THE FIELD SURVEY REPRESENTED BY THIS PLAN WAS COMPLETED ON THE 25th DAY OF APRIL, 2017
 COLIN FERGUSON, BCLS 658

Ferguson Land Surveying & Geomatics Ltd.
 B.C. AND CANADA LAND SURVEYORS
 404-1150 PARKWAY STREET, KELOWNA, B.C.
 TELEPHONE (250) 763-3113 FAX (250) 763-0321
 JOB No 20994-REF
 5/3/2018 (Aug 10, 2020) (LAW_789) 20994/20994/20994-REF1.DWG
 DWGID: 81 50 PLYING: 106 FILE