

# Schedule A

REFERENCE PLAN PLAN TO ACCOMPANY CITY OF KELOWNA ROAD CLOSURE AND REMOVAL OF HIGHWAY DEDICATION BYLAW No. 11362 OF PART OF LANE DEDICATED BY PLAN 3286 DISTRICT LOT 139 ODYD PURSUANT TO SECTION 120 OF THE LAND TITLE ACT AND SECTION 40 OF THE COMMUNITY CHARTER

PLAN EPP72040

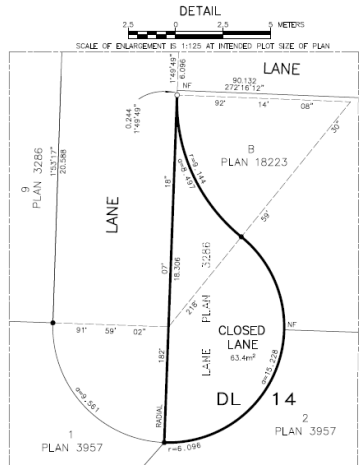
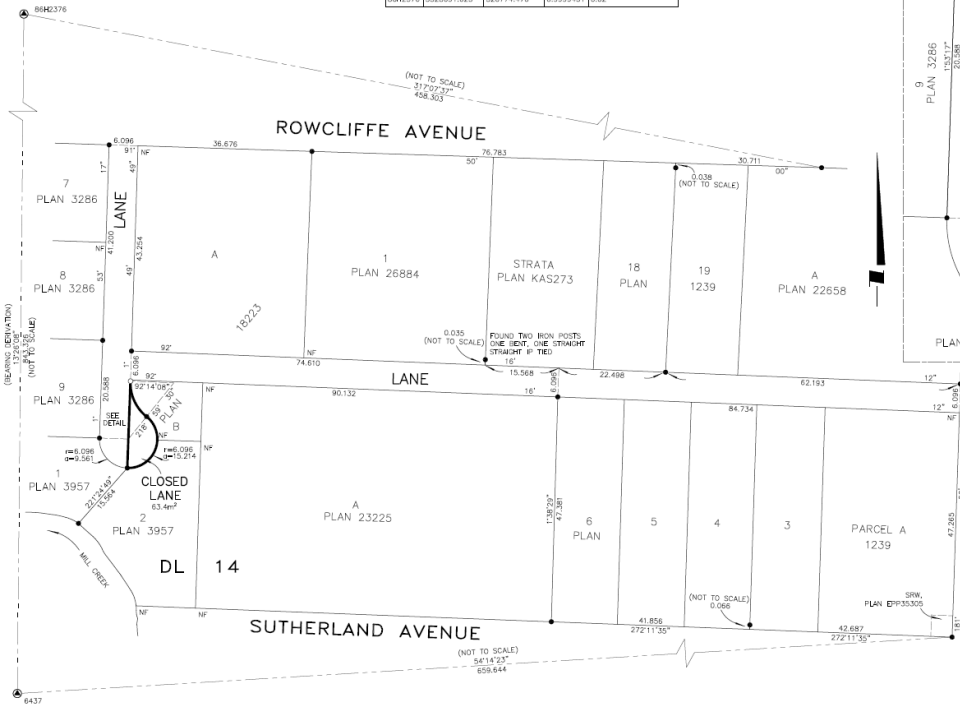
BCGS 82E.083



THE INTENDED PLOT SIZE OF THIS PLAN IS 560mm IN WIDTH BY 430mm IN HEIGHT (C SIDE) WHEN PLOTTED AT A SCALE OF 1:500

**GEODETIC TABLE OF COORDINATES**

NAD83(CSRS) 4.0.0.BC.1 UTM ZONE 11 COORDINATES				
MON	NORTHING	EASTING	COMPIRED FACTOR	ESTIMATED HORIZONTAL POSITIONAL ACCURACY
6437	5527871.423	320578.532	0.9999442	0.03
86H2376	5528891.623	320774.470	0.9999431	0.02



**LEGEND**  
 INTEGRATED SURVEY AREA NO. 4, CITY OF KELOWNA, NAD83 (CSRS) 4.0.0.BC.1  
 GRID BEARINGS ARE DERIVED FROM GNSS OBSERVATIONS BETWEEN GEODETIC CONTROL MONUMENTS 6437 AND 86H2376.  
 THE UTM COORDINATES AND ESTIMATED HORIZONTAL POSITIONAL ACCURACY ARE DERIVED FROM THE HASCOT PUBLISHED COORDINATES AND STANDARD DEVIATIONS FOR GEODETIC CONTROL MONUMENTS 6437 AND 86H2376.  
 THIS PLAN SHOWS HORIZONTAL GROUND-LEVEL DISTANCES UNLESS OTHERWISE SPECIFIED. TO COMPUTE CURVE DISTANCES, MULTIPLY GROUND-LEVEL DISTANCES BY THE AVERAGE CORRECTION FACTOR OF 0.9999437 WHICH HAS BEEN DERIVED FROM GEODETIC CONTROL MONUMENTS 6437 AND 86H2376.  
 ● DENOTES CONTROL MONUMENT FOUND  
 ○ DENOTES STANDARD IRON POST FOUND  
 ○ DENOTES STANDARD IRON POST SET  
 THIS PLAN LIES WITHIN THE REGIONAL DISTRICT OF CENTRAL OKANAGAN.  
 THE FIELD SURVEY REPRESENTED BY THIS PLAN WAS COMPLETED ON THE 29th/30th OF APRIL, 2017  
 COLIN FERGUSON, BCLS, BSC

**Ferguson Land Surveying & Geomatics Ltd.**  
 B.C. AND CANADA LAND SURVEYORS  
 403-430 PANDOSY STREET, KELOWNA, B.C.  
 TELEPHONE: (250) 763-1115, FAX: (250) 763-0321  
**JOB No 20994-REF**  
 5/14/14 (Rev. 15, 2005) (LAW) (2005) (2004) (2004) (2004) (2004)  
 DATED BY: SF