

**Subject Property Notes:**  
 Amend the OCP for portions of the subject properties from Single/Two Unit Residential - Hillside (S2RESH) to Major Park/Open Space (Public) (PARK).

**Subject Property Notes:**  
 Amend the OCP for a portion of the subject properties from Major Park/Open Space (Public) (PARK) to Single/Two Unit Residential - Hillside (S2RESH).

**MAP "A" OCP AMENDMENT  
 OCP17-0011**

 PARK to S2RESH  
 S2RESH to PARK

This map is for general information only. The City of Kelowna does not guarantee its accuracy. All information should be verified.

0 40 80 Metres

  
 City of Kelowna  
 Rev. Saturday, May 13, 2017



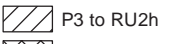
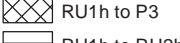

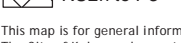
**Subject Property Notes:**  
 Rezone portions of the subject properties from RU1h Large Lot Housing (Hillside Area) to P3 Parks and Open Space.

**Subject Property Notes:**  
 Rezone a portion of the subject properties from RU1h Large Lot Housing (Hillside Area) to RU2h Medium Lot Housing (Hillside Area).

**Subject Property Notes:**  
 Rezone a portion of the subject properties from RU2h Medium Lot Housing (Hillside Area) to P3 Parks and Open Space.

**Subject Property Notes:**  
 Rezone a portion of the subject properties from P3 Parks and Open Space to RU2h Medium Lot Housing (Hillside Area).

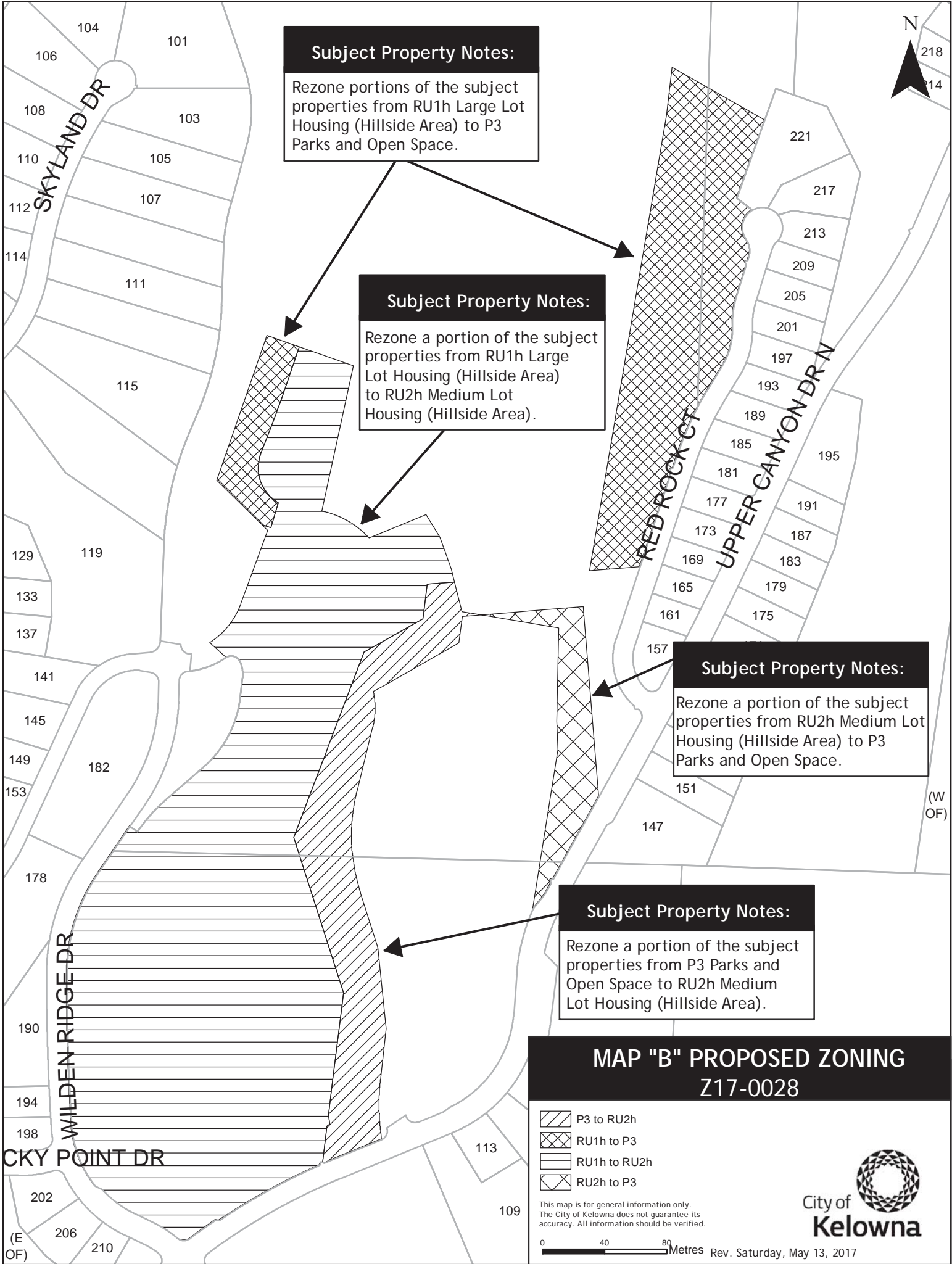
**MAP "B" PROPOSED ZONING  
 Z17-0028**

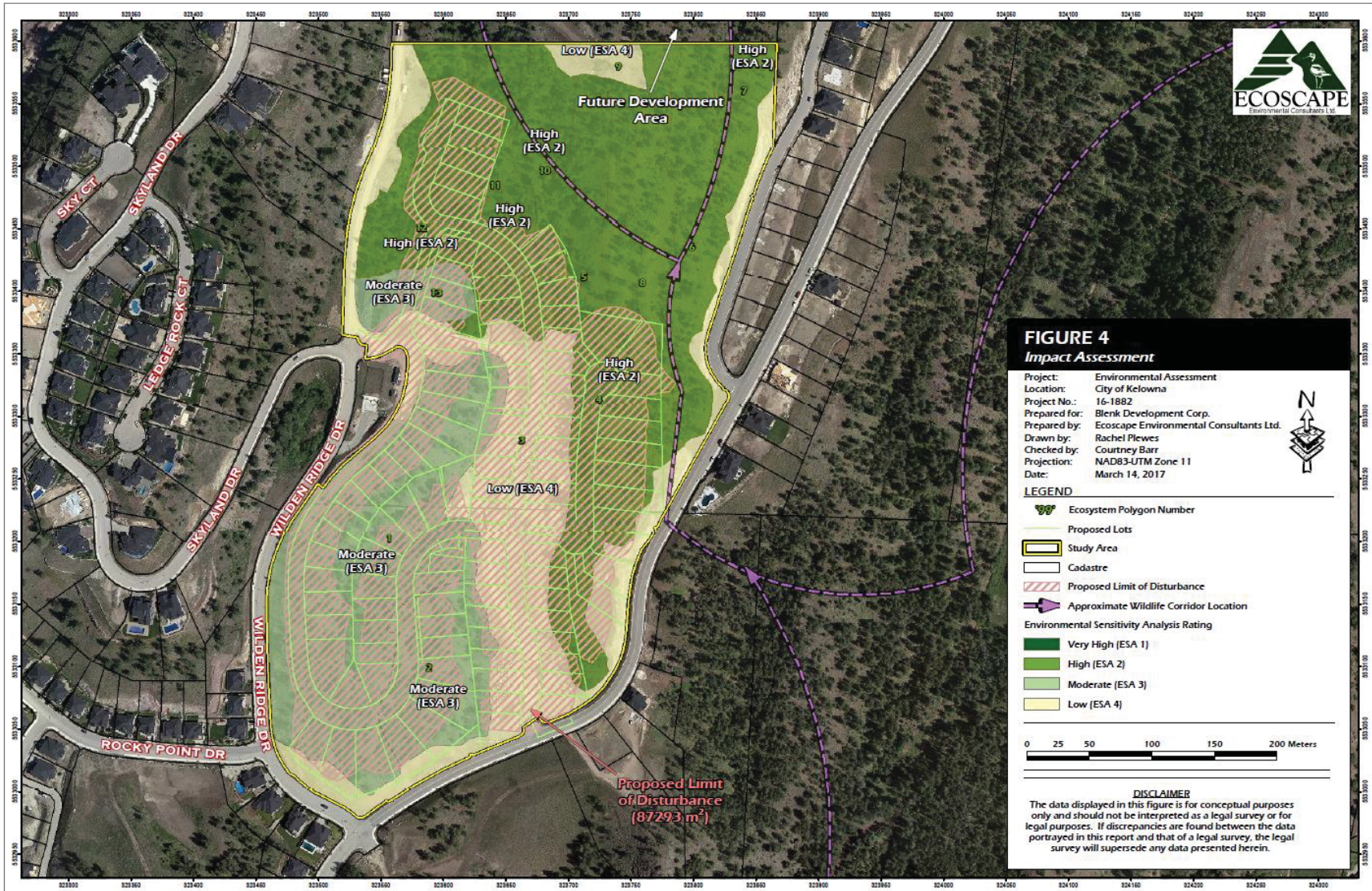
-  P3 to RU2h
-  RU1h to P3
-  RU1h to RU2h
-  RU2h to P3

This map is for general information only. The City of Kelowna does not guarantee its accuracy. All information should be verified.



Rev. Saturday, May 13, 2017





# ATTACHMENT 2

This forms part of application # OCP17-0011 Z17-0028



Planner Initials LB  
City of Kelowna  
OKANAGAN LAND COMMUNITY PLANNING

## GLENMORE HIGHLANDS AREA STRUCTURE PLAN

Figure 19  
Environmental and Recreational Network

Scale 1:12,500

February 2000



# ATTACHMENT 3

This forms part of application # OCP17-0011 Z17-0028



City of Kelowna  
COMMUNITY PLANNING



Planner Initials

LB



### LAND AREA SUMMARY

RUIH TO P3 - 19362m<sup>2</sup>

RUIH TO RU2H - 61313m<sup>2</sup>

RU2H TO P3 - 4160m<sup>2</sup>

P3 TO RU2H - 11068m<sup>2</sup>

REVISED P3 ZONING

REVISED RU2H ZONING

InterCAD  
CONSULTING ENGINEERS

NO.	DATE	BY	REVISION	CHK'D
2	17-05-04	RZ	ADDED P3 STRIP WEST OF RED ROCK CT	
1	17-03-17	RZ	DEVELOPMENT PERMIT SUBMISSION	

Drawn	R. ZECHEL
Design	R. ZECHEL
Approved	
Date	AUG 2016
Scale	
Horiz. Vert.	1:1500

THE CITY OF KELOWNA  
ENGINEERING DEPARTMENT  
Wilden - Phase 2G Site Services  
Rezoning Plan

Division	
Drawing No.	2
Rev. No.	

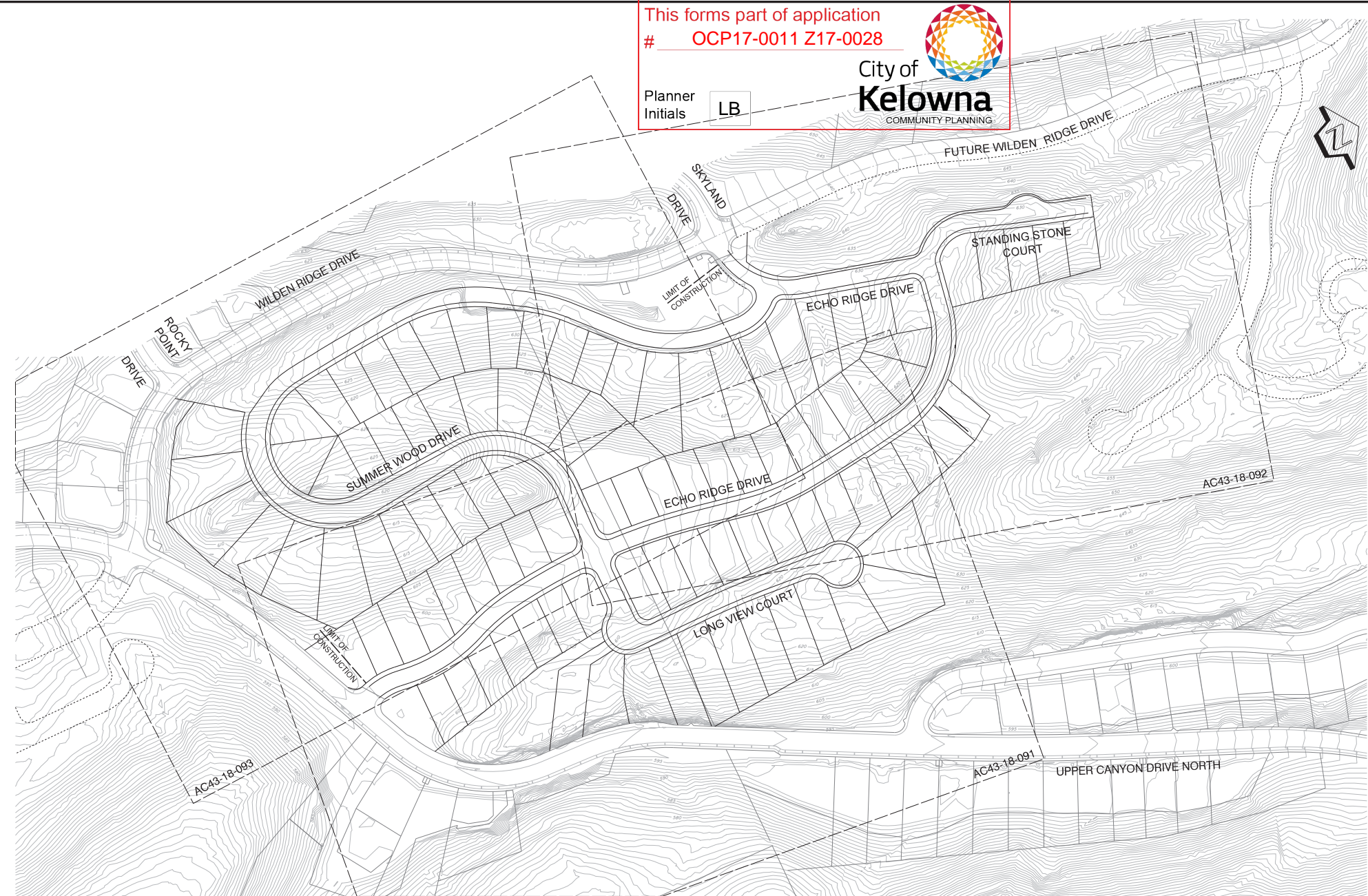
# ATTACHMENT 4

This forms part of application # **OC17-0011 Z17-0028**



City of **Kelowna**  
COMMUNITY PLANNING

Planner Initials **LB**



**InterCAD**  
CONSULTING ENGINEERS

NO.	DATE	BY	REVISION	CHK'D
1	17-03-17	R.Z.	DEVELOPMENT PERMIT SUBMISSION	

Drawn R. ZECHEL  
Design R. ZECHEL  
Approved  
Date AUG 2016  
Scale  
Horiz. 1:1000  
Vert.

THE CITY OF KELOWNA  
ENGINEERING DEPARTMENT  
Wilden - Phase 2G Site Services  
Key Plan

Division	
Drawing No.	AC43-18-090DP
Rev. No.	1