



Bellevue Creek Linear Park Development Progress Report

May 8th, 2017



Overview

- ▶ Surtees Property
- ▶ Woodhaven Nature Conservancy Management Plan (*presented by Murray Kopp, Director of Parks Services, RDCO*)
- ▶ The Ponds neighbourhood development
- ▶ Canyon Falls Park
- ▶ Upland connection to Myra-Bellevue Provincial Park

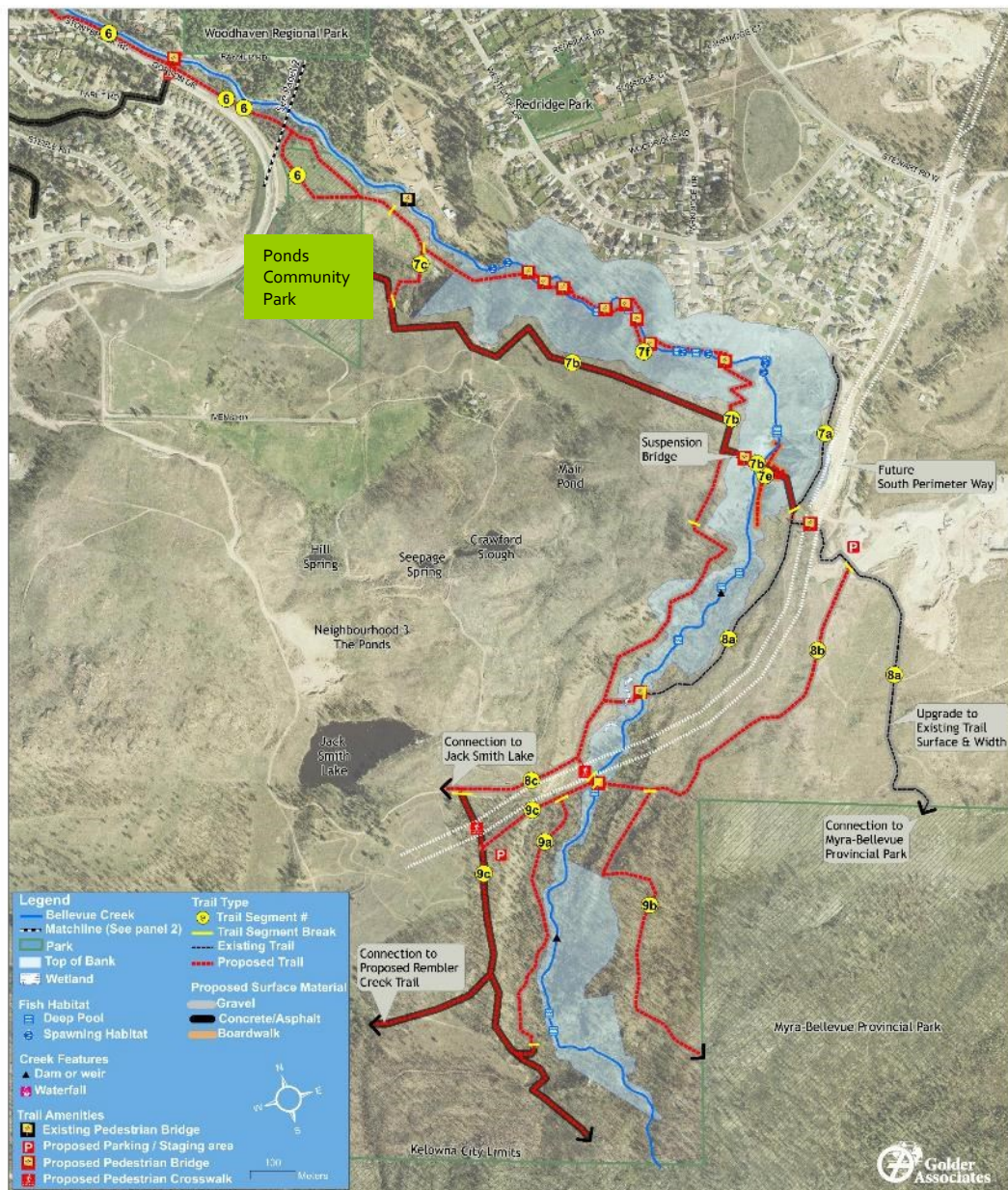


Bellevue Creek Greenway

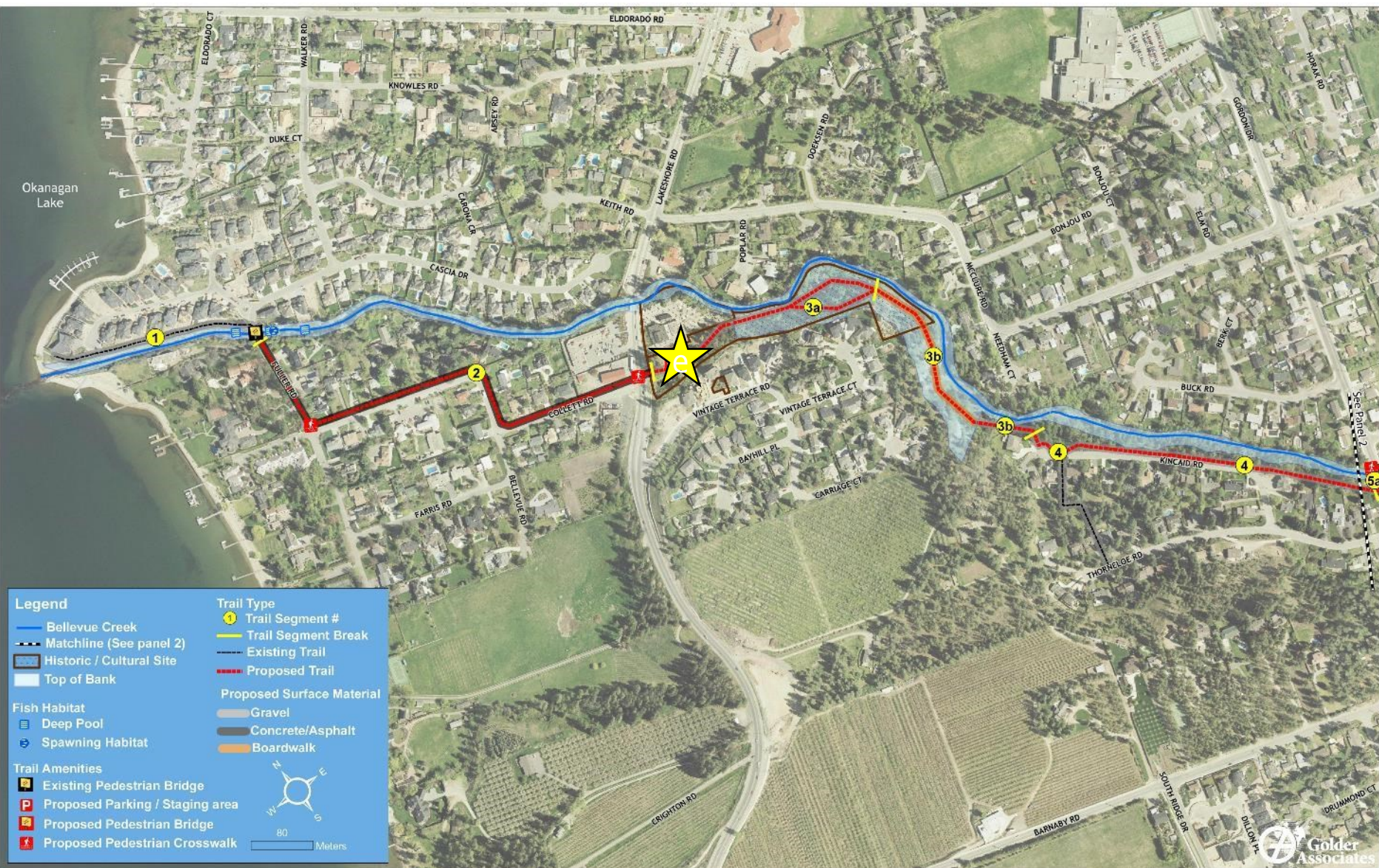
Okanagan Lake to Gordon Drive - Panel 1

December 2009





Bellevue Creek Greenway Raymer Road to City Limits - Panel 3 December, 2009



Bellevue Creek Greenway

Okanagan Lake to Gordon Drive - Panel 1

December 2009



Surtees Property – Conceptual Rendering



Surtees Property – Conceptual Rendering





Woodhaven Nature Conservancy Regional Park Management Plan

January 20, 2017



Final Submission



OUTLAND DESIGN
LANDSCAPE ARCHITECTURE

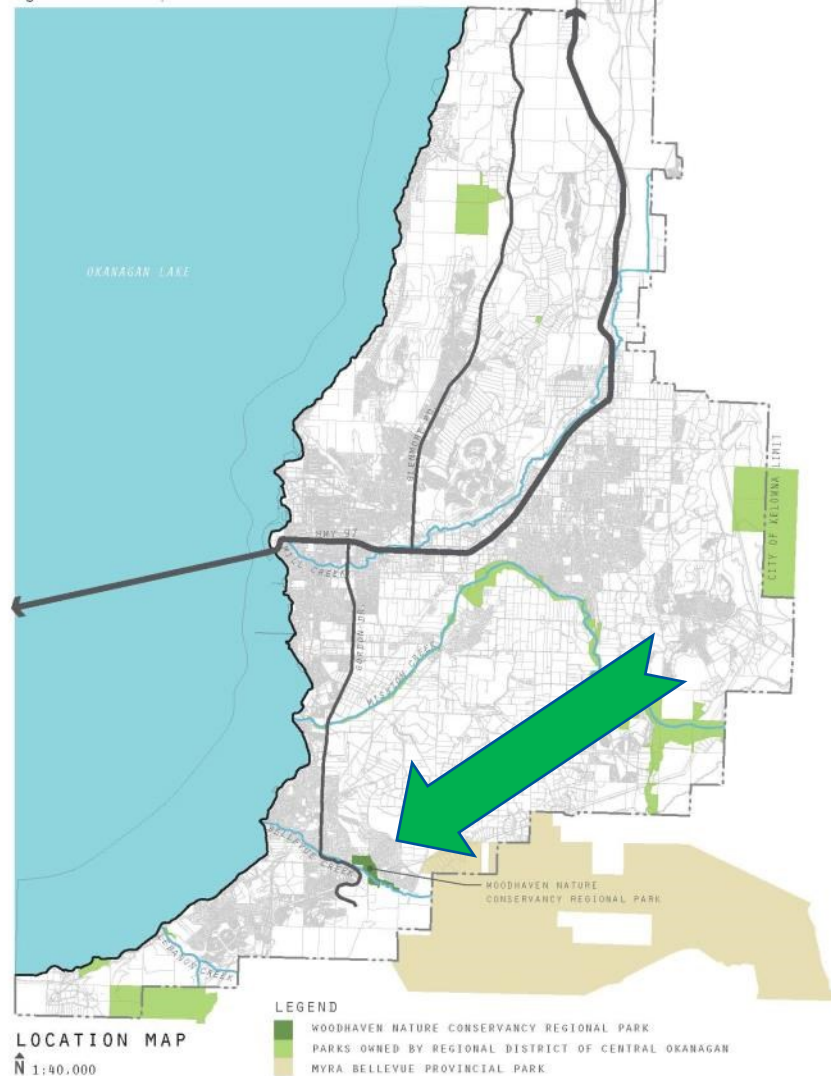
UFA

Ecora

Woodhaven Nature Conservancy

kelowna.ca

Figure 1: Location Map





Woodhaven Nature Conservancy

kelowna.ca

Management Plan Goals:

Conservation

Balance recreational uses and conservation of natural assets

Interpretation and education

Enhance the role of First Nations knowledge and indigenous teaching at the park

Outdoor experience

Manage the park to promote opportunities for healthier lifestyles for all visitors

Stewardship and partnership

Work with external partners to optimize mutual benefits and coordinate management efforts



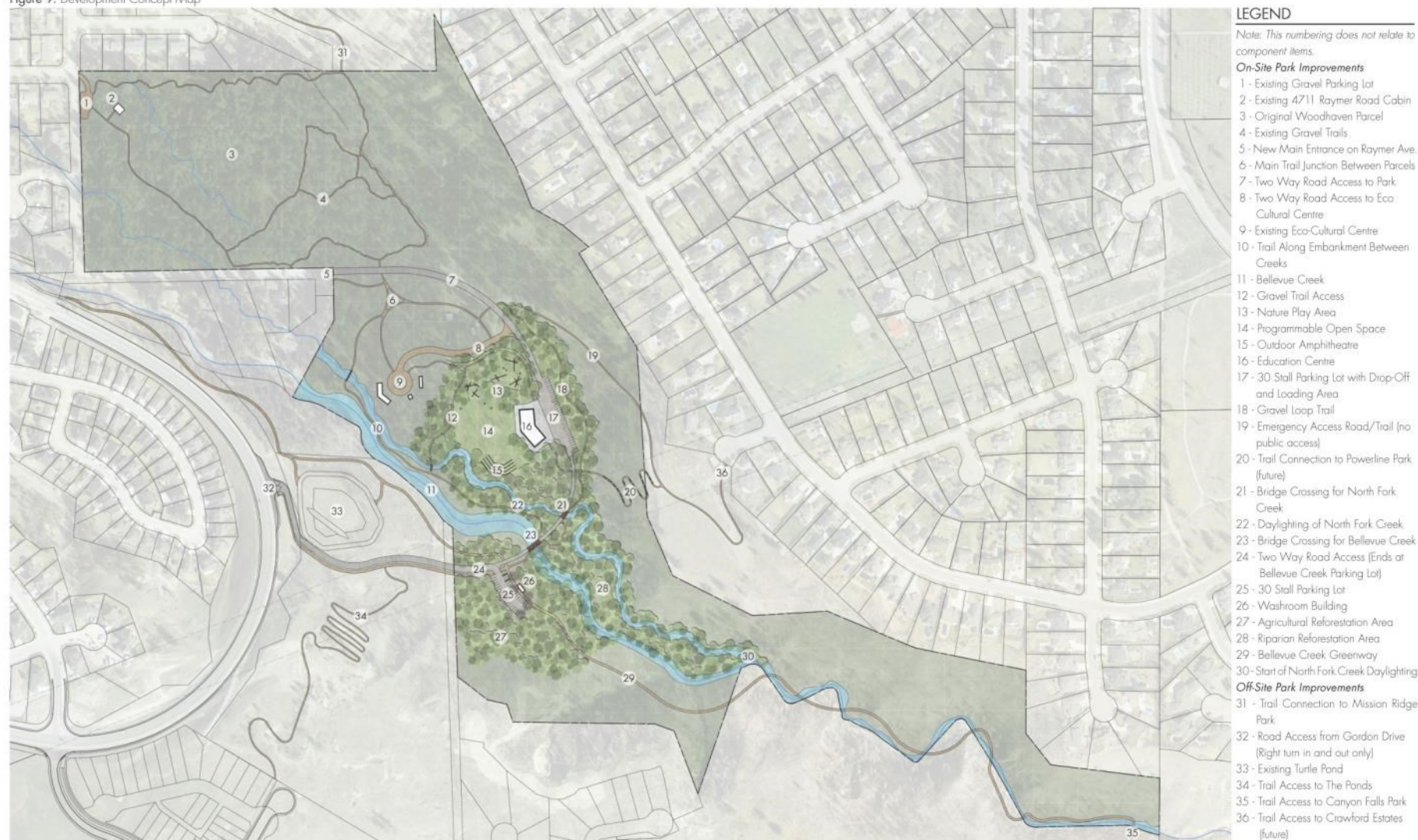
Key Management Plan Objectives:

1. Park access provision
2. Connections to a broader park context
3. Conversion of agricultural land use
4. Evolution of the park as a learning landscape
5. Protection and enhancement of riparian corridors
6. Stabilization of sensitive hillslopes
7. Management of woodland areas

Figure 2: Current Land Use, Road and Trail Network Map

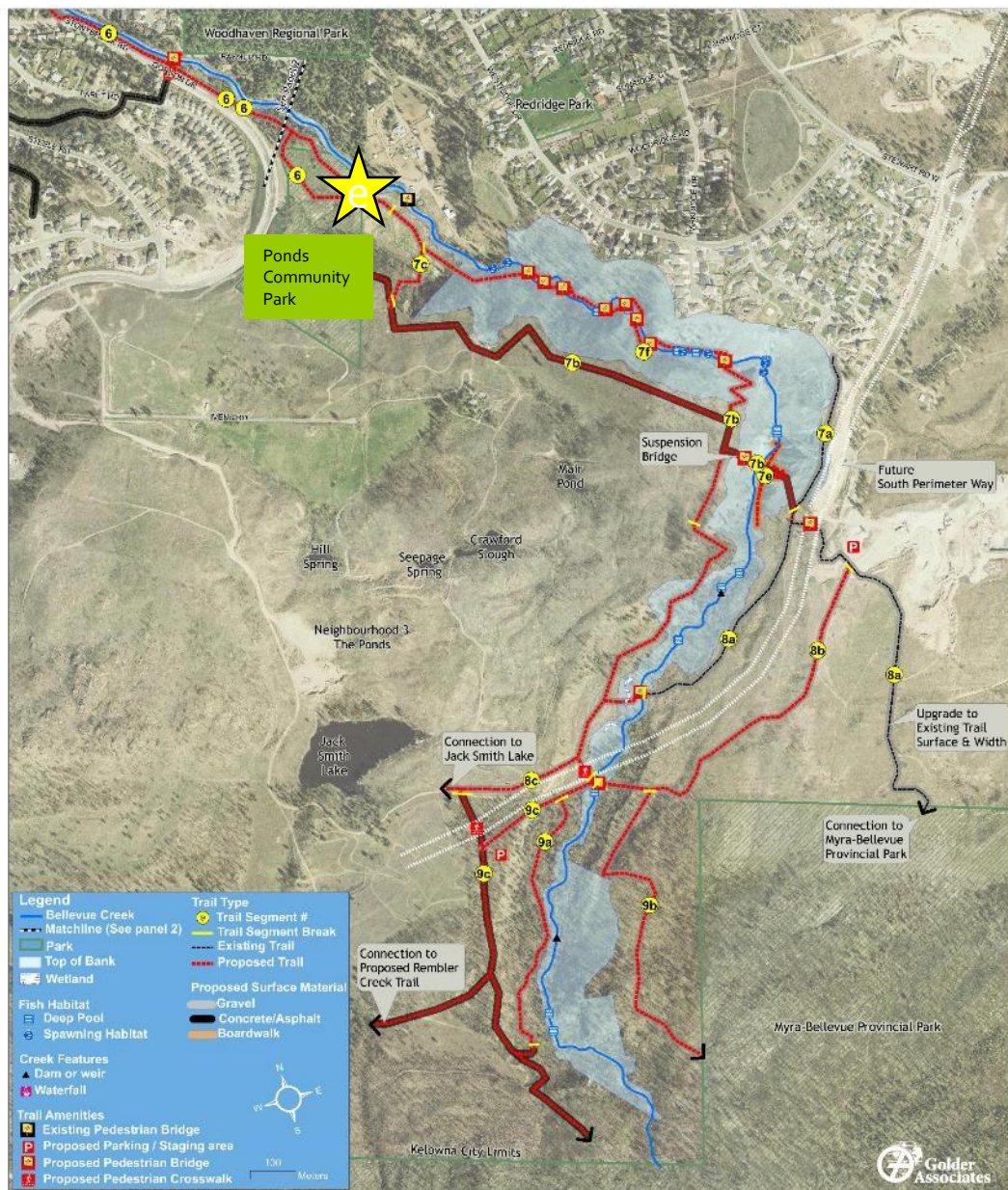


Figure 9: Development Concept Map

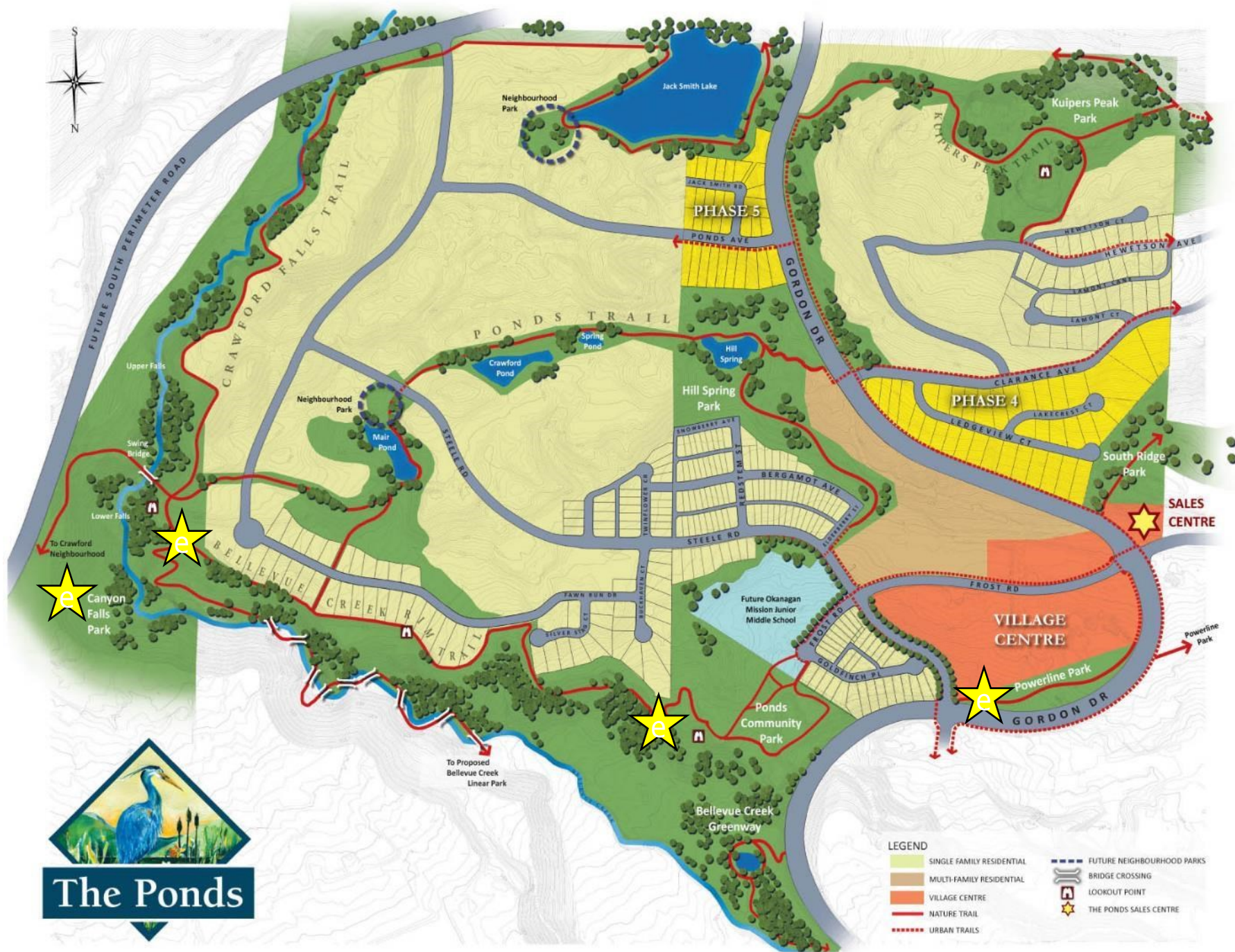


Moving the Plan Forward:

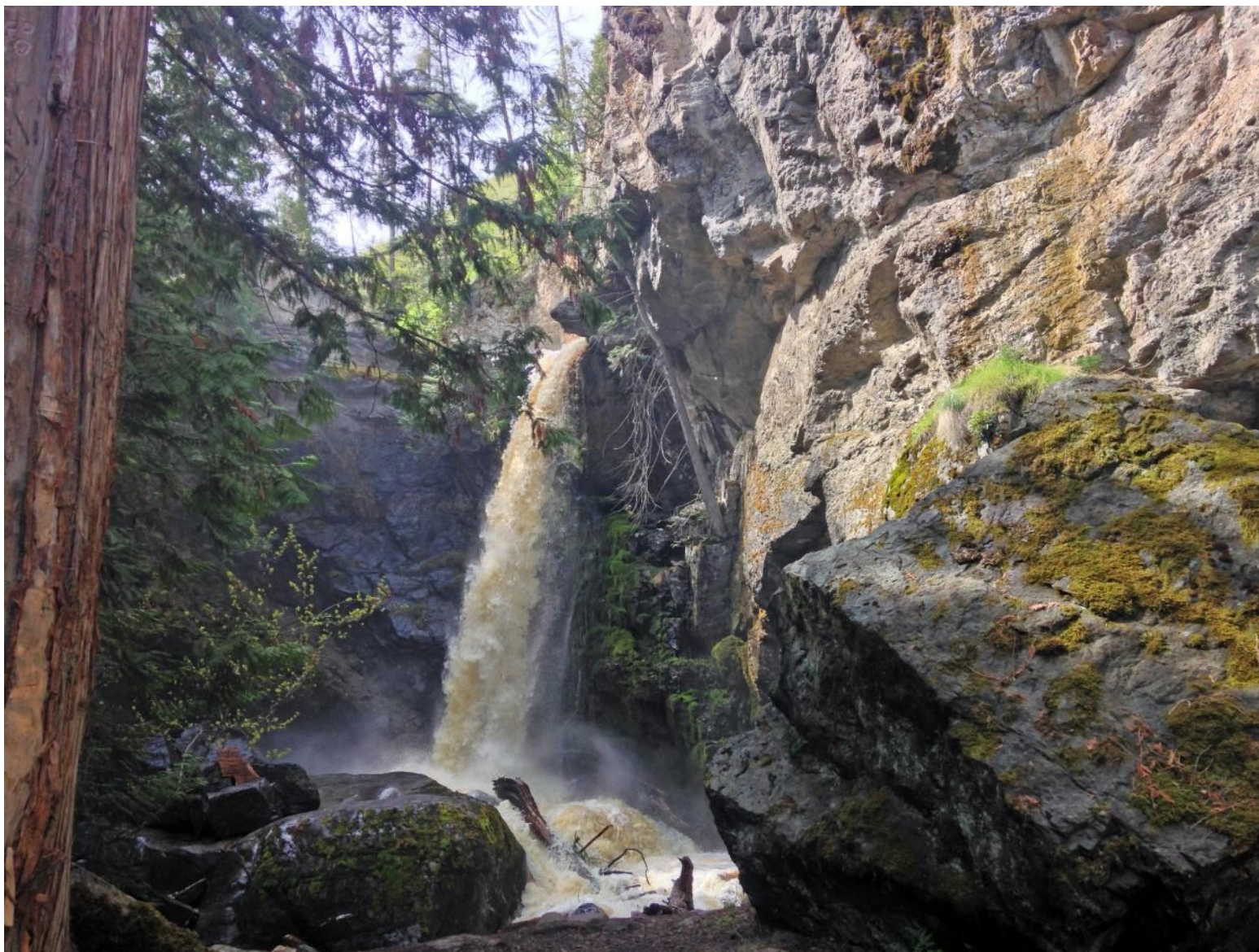
1. 20 Year Capital Plan Estimated at \$5 Million
 - a) Partnerships – City of Kelowna / SD #23 / UBC / BC Parks
 - b) Connections – Community / Other Parks
 - c) Restoration of Natural Areas
 - d) Trails
 - e) Park Amenities
2. Implementation to Begin – 2021 / 2022
3. Included as part of RDCO 5 Year Capital Plan

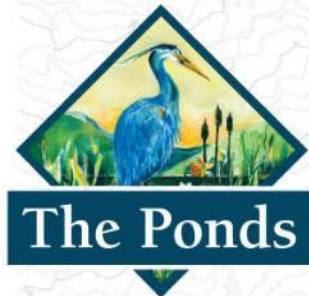
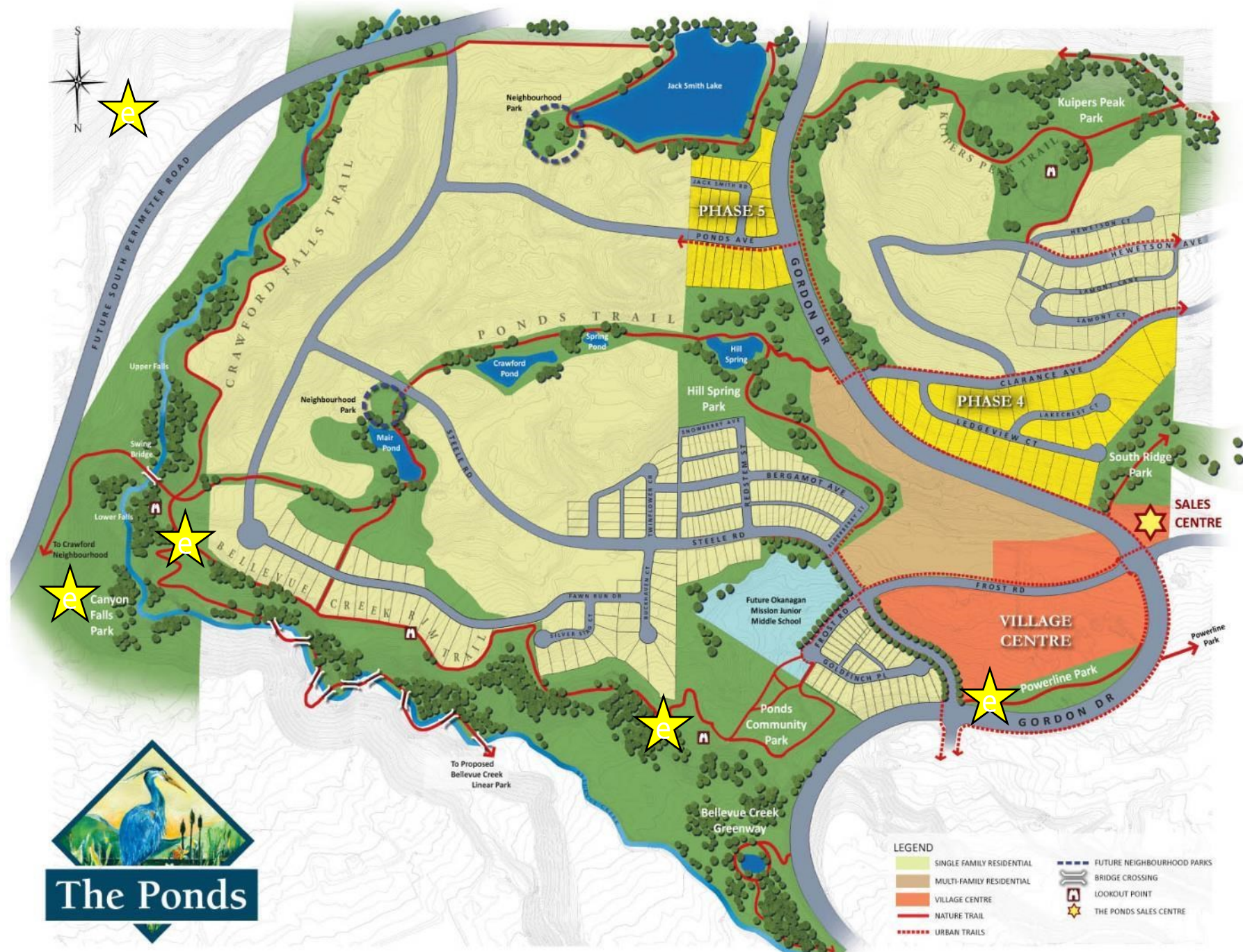


Bellevue Creek Greenway Raymer Road to City Limits - Panel 3 December, 2009



- LEGEND
- SINGLE FAMILY RESIDENTIAL
 - MULTI-FAMILY RESIDENTIAL
 - VILLAGE CENTRE
 - NATURE TRAIL
 - URBAN TRAILS
 - FUTURE NEIGHBOURHOOD PARKS
 - BRIDGE CROSSING
 - LOOKOUT POINT
 - THE PONDS SALES CENTRE





- LEGEND
- SINGLE FAMILY RESIDENTIAL
 - MULTI-FAMILY RESIDENTIAL
 - VILLAGE CENTRE
 - NATURE TRAIL
 - URBAN TRAILS
 - FUTURE NEIGHBOURHOOD PARKS
 - BRIDGE CROSSING
 - LOOKOUT POINT
 - THE PONDS SALES CENTRE





Questions?

For more information, visit kelowna.ca.