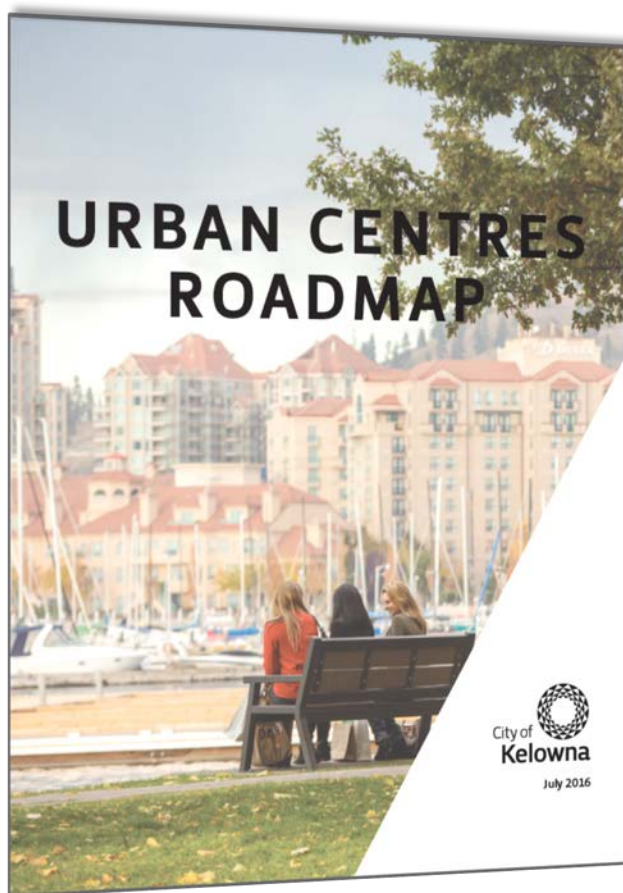


Capri-Landmark Urban Centre Plan

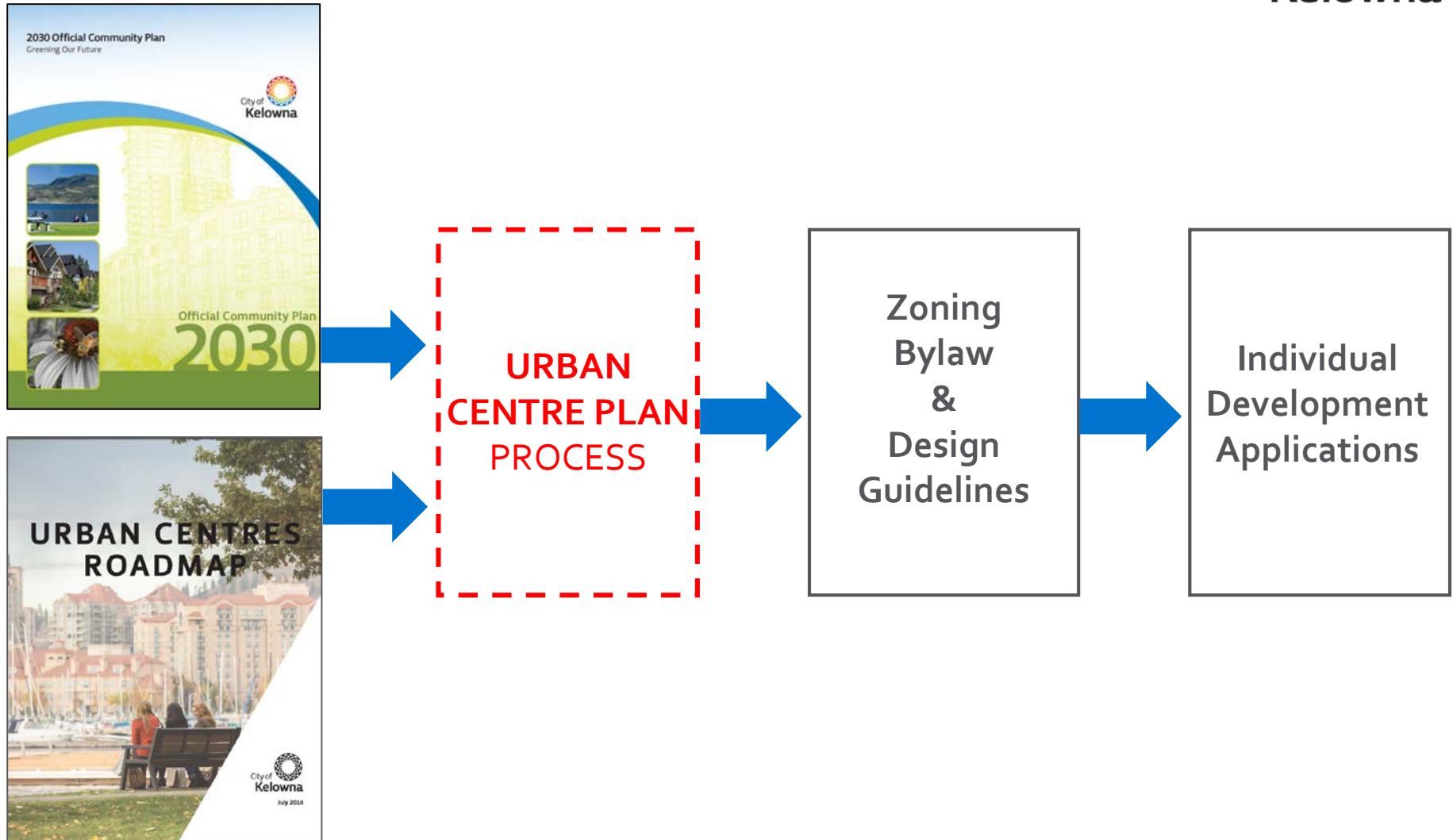
Policy & Planning, March 27th, 2017

Urban Centres Roadmap (UCR)



- ▶ Reinforces role of urban centres
- ▶ Establishes core Ingredients of urban centres
- ▶ Identifies targets to guide planning
- ▶ Established Capri-Landmark as priority one for area planning
- ▶ Capri-Landmark first plan since approval of UCR

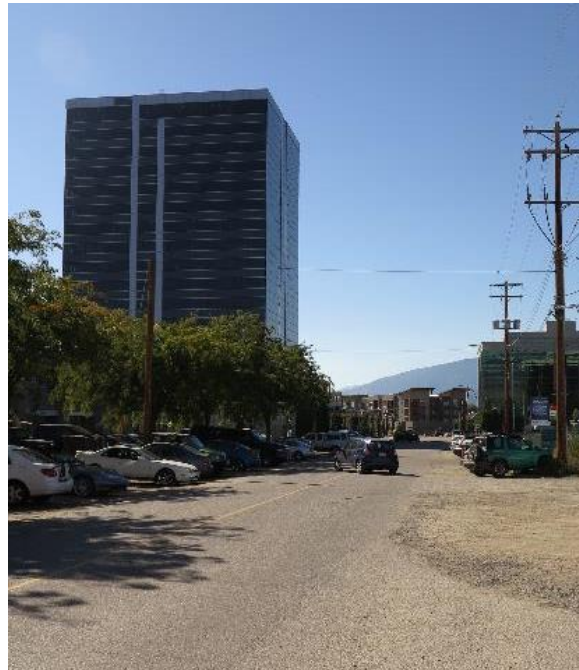
Hierarchy of Plans



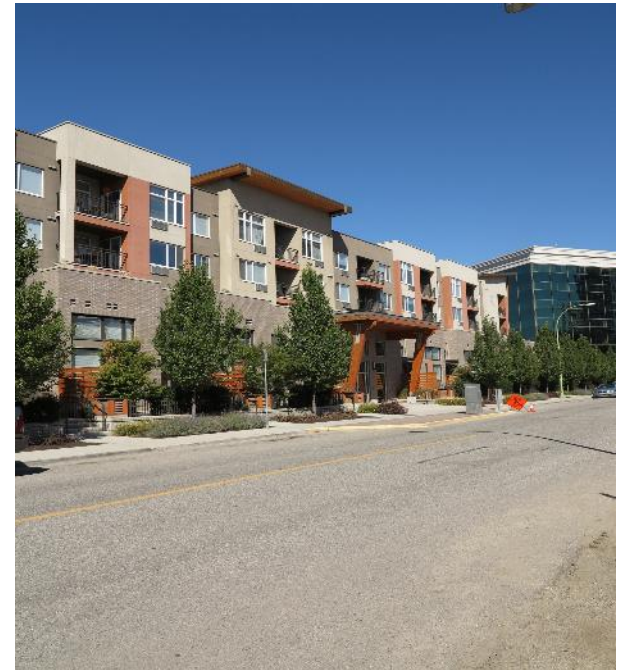
Need for a Comprehensive Plan



**AREA IN
TRANSITION**



**INFRASTRUCTURE
DEFICIT**



**LACK OF
AMENITIES**

Plan Objectives

- ▶ Re-examine the future land use to support growth
- ▶ Determine transportation network enhancements
- ▶ Identify future public spaces & parks
- ▶ Establish where to focus commercial & urban design
- ▶ Determine long-term infrastructure and servicing impacts to support growth
- ▶ Implementation strategy to support public improvements



Opportunity to Transform Area



Key Phases & Milestones

Background Feb-March

- Profile and background
- Engagement Plan
- Terms of Reference for consultant support
- **Council Report Kick-off**

Concept Planning Apr-July

- **Community engagement listen and learn & stakeholder engagement**
- Engage consultants and begin concept planning meetings
- Concept development (2-3 preliminary concepts)
- **Community workshop to share 2-3 preliminary concepts**
- **Report to Council to review preliminary concepts**

Preferred Concept Aug-Oct

- Evaluate concepts: public feedback, *Urban Centres Roadmap* and transportation analysis
- Develop preferred plan: transportation network, future land use, public / open space
- Urban design consultant support to render preferred concept plan
- **Community engagement on preferred concept plan**
- **Report to council on preferred concept plan to receive endorsement to develop final plan and Transportation Impact Assessment (TIA)**

Final Phase

Endorsement of Preferred Plan October-November

Draft Plan & Implementation Nov-Feb

- ▶ Develop supporting plan content
- ▶ Public realm identity for Landmark
- ▶ Implementation strategy
- ▶ **Draft Plan Consultation**
- ▶ **Finalize plan for final council report**

TIA for Detailed Improvements Nov-Feb

- ▶ TIA based on preferred land use plan
- ▶ Define improvements with associated costing
- ▶ Bring forward for approval as part of final council report

Community Engagement



**Information
Sharing &
Building
Awareness**

Phase 1



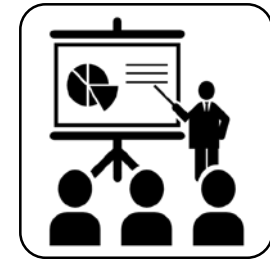
**Community
Workshop &
Concept
Development**

Phase 2



**Draft
Plan
Consultation**

Phase 3

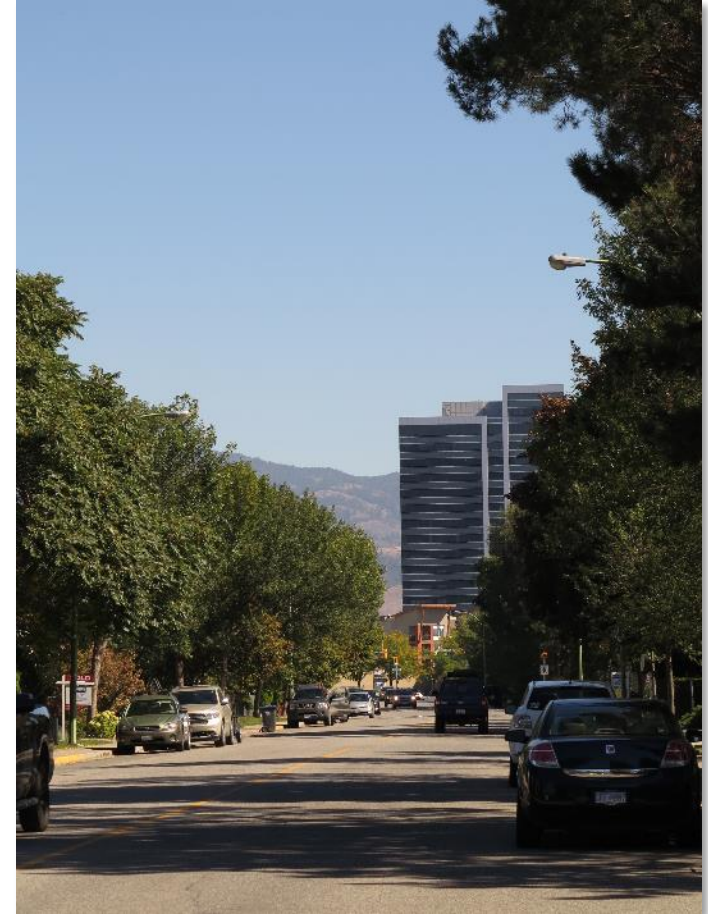


**Informing
Community**

Phase 4

Final Plan Deliverables

- ▶ Future land use strategy
- ▶ Policy directions
- ▶ Multi-modal transportation plan
 - ▶ Designated main street
- ▶ Public amenities & open space plan
 - ▶ Ritchie Brook Daylighting
- ▶ Implementation strategy
 - ▶ Costing & funding strategy
 - ▶ Servicing & infrastructure needs to support growth targets
- ▶ Transportation Impact Assessment (TIA) with improvements identified and costed



Conclusion

- ▶ Need strategic approach to support future growth
 - ▶ Boost share of residential
 - ▶ Address infrastructure deficit
 - ▶ Link transportation and land use planning
- ▶ Create certainty for future development
- ▶ Build further momentum for vibrant urban centres

