

1 NORTH ELEVATION  
A-200 3/32" = 1'-0"



2 NORTH ELEVATION - COLOUR  
A-200 3/32" = 1'-0"

EXTERIOR FINISHES		
IMAGE	MATERIAL	
1	FIBRE CEMENT CLADDING: HARDIE PANEL, COBBLE STONE	
2	FIBRE CEMENT CLADDING: HARDIE PANEL, IRON GRAY	
3	COMPOSITE CLADDING: NEWTCHWOOD, AUSTRALIAN RED CEDAR	
4	MASONRY CLADDING: DORSET, MARBLE GRAY	
5	WINDOWS, DOORS, RAILINGS, & SOFFIT: BLACK	

- ELEVATION NOTES:
1. ALTERNATE MATERIAL SUPPLIERS ARE ACCEPTABLE PROVIDED THE FORM AND CHARACTER IS MAINTAINED.
  2. REQUIRED GUARDS SHALL BE MINIMUM 42", MEASURED FROM TOP OF DECK TO TOP OF GUARD U.N.O.

**COPYRIGHT**  
ALL RIGHTS RESERVED  
All ideas, designs, drawings and specifications are the exclusive property of LIME Architecture Inc. As instruments of service, they may not be used or reproduced in any manner without the expressed written consent of LIME Architecture Inc. All Contracting Trades shall check and verify all levels, dimensions, data and conditions on the site prior to commencement of any work. Any discrepancies are to be reported immediately to LIME Architecture Inc. Do not Scale any dimensions from this drawing.

All trades are to execute the work in accordance with the current municipality building by-laws and requirements of other local authorities having jurisdiction as well as the British Columbia Building Code - (most recent edition) including all published revisions and addenda. All trades shall assume full responsibility for the locations and protection of all under and above ground utilities, wires and conduit connections, including (but not limited to) water, sewer, gas, hydro and telephone.

REVISION NO.	DATE	DESCRIPTION
11.14.25	FOR DISCUSSION	
11.24.25	FOR DISCUSSION	
12.05.25	FOR DP	
12.15.25	FOR REVIEW	
03.09.26	FOR DP	

<b>PLOT DATE</b>	03.09.26
<b>PROJECT</b>	TROIKA - 165 DOUGALL RD N
<b>DRAWING TITLE</b>	NORTH ELEVATIONS
<b>DRAWING NO.</b>	A-200

**SCHEDULE B**  
This forms part of application  
# DP25-0234  
Planner Initials: SO  
City of Kelowna  
COMMUNITY PLANNING

FOR DP

REVISION NO. & DATE	DESCRIPTION
11.14.25	FOR DISCUSSION
11.24.25	FOR DISCUSSION
12.05.25	FOR DP
12.15.25	FOR REVIEW
03.09.26	FOR DP

<b>PLOT DATE</b>	03.09.26
<b>PROJECT</b>	TROIKA - 165 DOUGALL RD N
<b>DRAWING TITLE</b>	EAST ELEVATIONS
<b>DRAWING NO.</b>	A-201

EXTERIOR FINISHES	
IMAGE	MATERIAL
1	FIBRE CEMENT CLADDING: HARDIE PANEL, COBBLE STONE
2	FIBRE CEMENT CLADDING: HARDIE PANEL, IRON GRAY
3	COMPOSITE CLADDING: NEWTECHWOOD, AUSTRALIAN RED CEDAR
4	MASONRY CLADDING: DORSET, MARBLE GRAY
5	WINDOWS, DOORS, RAILINGS, & SOFFIT: BLACK

**ELEVATION NOTES:**  
1. ALTERNATE MATERIAL SUPPLIERS ARE ACCEPTABLE PROVIDED THE FORM AND CHARACTER IS MAINTAINED.  
2. REQUIRED GUARDS SHALL BE MINIMUM 42", MEASURED FROM TOP OF DECK TO TOP OF GUARD U.N.O.



**1 EAST ELEVATION**  
A-201 3/32" = 1'-0"



**2 EAST ELEVATION - COLOUR**  
A-201 3/32" = 1'-0"

**SCHEDULE B**  
This forms part of application  
# DP25-0234  
Planner Initials **SO**  
City of Kelowna COMMUNITY PLANNING

**FOR DP**



1 SOUTH ELEVATION  
A-202 3/32" = 1'-0"



2 SOUTH ELEVATION - COLOUR  
A-202 3/32" = 1'-0"

EXTERIOR FINISHES		
IMAGE	MATERIAL	
	FIBRE CEMENT CLADDING: HARDIE PANEL, COBBLE STONE	1
	FIBRE CEMENT CLADDING: HARDIE PANEL, IRON GRAY	2
	COMPOSITE CLADDING: NEWTECHWOOD, AUSTRALIAN RED CEDAR	3
	MASONRY CLADDING: DORSET, MARBLE GRAY	4
	WINDOWS, DOORS, RAILINGS, & SOFFIT: BLACK	5

- ELEVATION NOTES:
1. ALTERNATE MATERIAL SUPPLIERS ARE ACCEPTABLE PROVIDED THE FORM AND CHARACTER IS MAINTAINED.
  2. REQUIRED GUARDS SHALL BE MINIMUM 42", MEASURED FROM TOP OF DECK TO TOP OF GUARD U.N.O.

**COPYRIGHT**  
ALL RIGHTS RESERVED  
All ideas, designs, drawings and specifications are the exclusive property of LIME Architecture Inc. As instruments of service, they may not be used or reproduced in any manner without the expressed written consent of LIME Architecture Inc. All Contracting Trades shall check and verify all levels, dimensions, data and conditions on the site prior to commencement of any work. Any discrepancies are to be reported immediately to LIME Architecture Inc. Do not Scale any dimensions from this drawing.

All trades are to execute the work in accordance with the current municipality building by-laws and requirements of other local authorities having jurisdiction as well as the British Columbia Building Code - (most recent edition) including all published revisions and addenda. All trades shall assume full responsibility for the locations and protection of all under and above ground utilities, wires and conduit connections, including (but not limited to) water, sewer, gas, hydro and telephone.

REVISION NO., DATE AND DESCRIPTION
11.14.25 FOR DISCUSSION
11.24.25 FOR DISCUSSION
12.05.25 FOR DP
12.15.25 FOR REVIEW
03.09.26 FOR DP

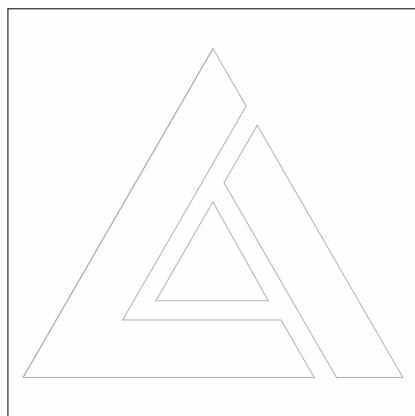
<b>PLOT DATE</b> 03.09.26
<b>PROJECT</b> TROIKA - 165 DOUGALL RD N
<b>DRAWING TITLE</b> SOUTH ELEVATIONS
<b>DRAWING NO.</b> A-202

**SCHEDULE B**  
This forms part of application  
# DP25-0234

Planner Initials **SO**

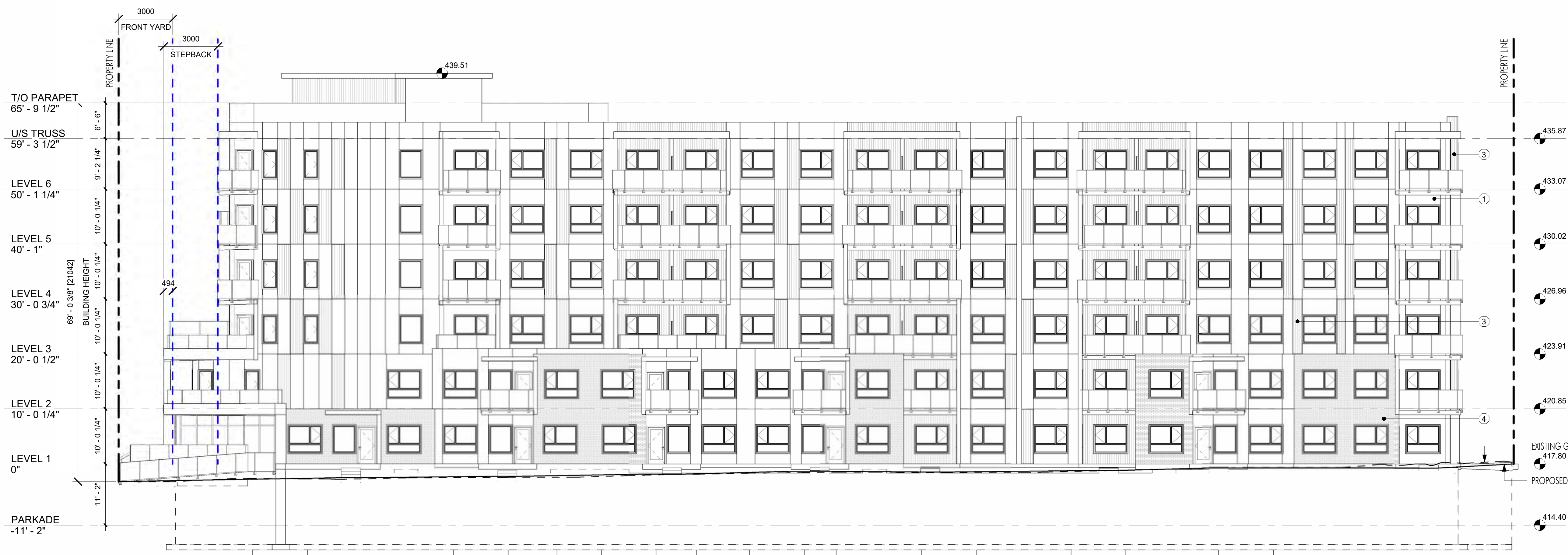
City of **Kelowna**  
COMMUNITY PLANNING

**FOR DP**



EXTERIOR FINISHES		
IMAGE	MATERIAL	
1	FIBRE CEMENT CLADDING: HARDIE PANEL, COBBLE STONE	
2	FIBRE CEMENT CLADDING: HARDIE PANEL, IRON GRAY	
3	COMPOSITE CLADDING: NEWTECHWOOD, AUSTRALIAN RED CEDAR	
4	MASONRY CLADDING: DORSET, MARBLE GRAY	
5	WINDOWS, DOORS, RAILINGS, & SOFFIT: BLACK	

- ELEVATION NOTES:**
- ALTERNATE MATERIAL SUPPLIERS ARE ACCEPTABLE PROVIDED THE FORM AND CHARACTER IS MAINTAINED.
  - REQUIRED GUARDS SHALL BE MINIMUM 42", MEASURED FROM TOP OF DECK TO TOP OF GUARD U.N.O.



**1 WEST ELEVATION**  
A-203/ 3/32" = 1'-0"



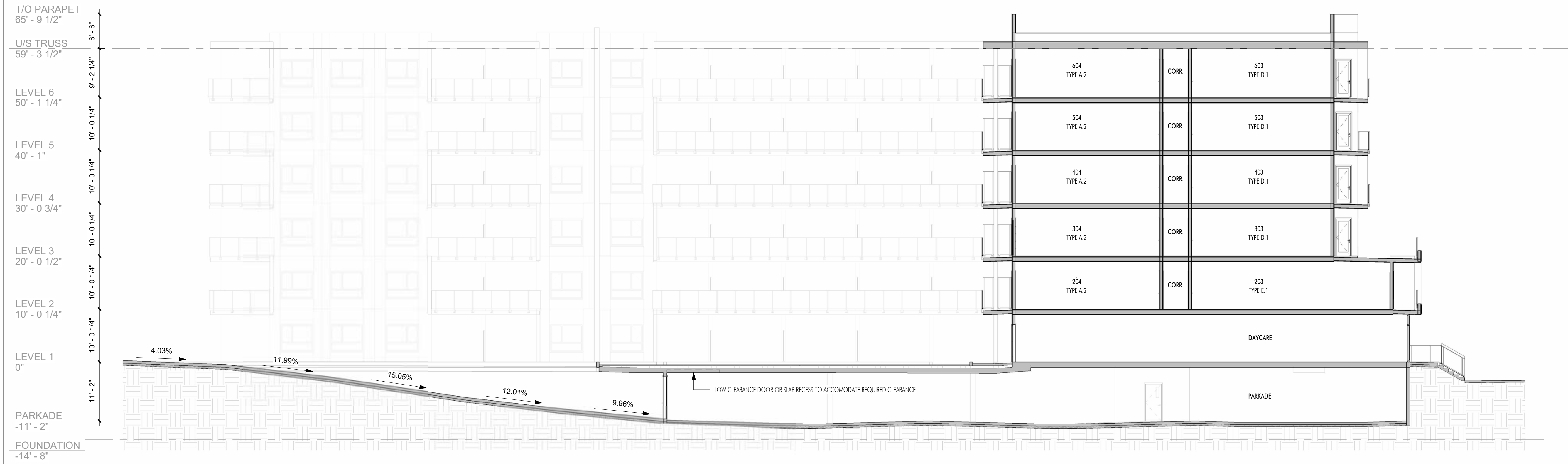
**2 WEST ELEVATION - COLOUR**  
A-203/ 3/32" = 1'-0"

**SCHEDULE B**  
This forms part of application  
# DP25-0234  
Planner Initials **SO**

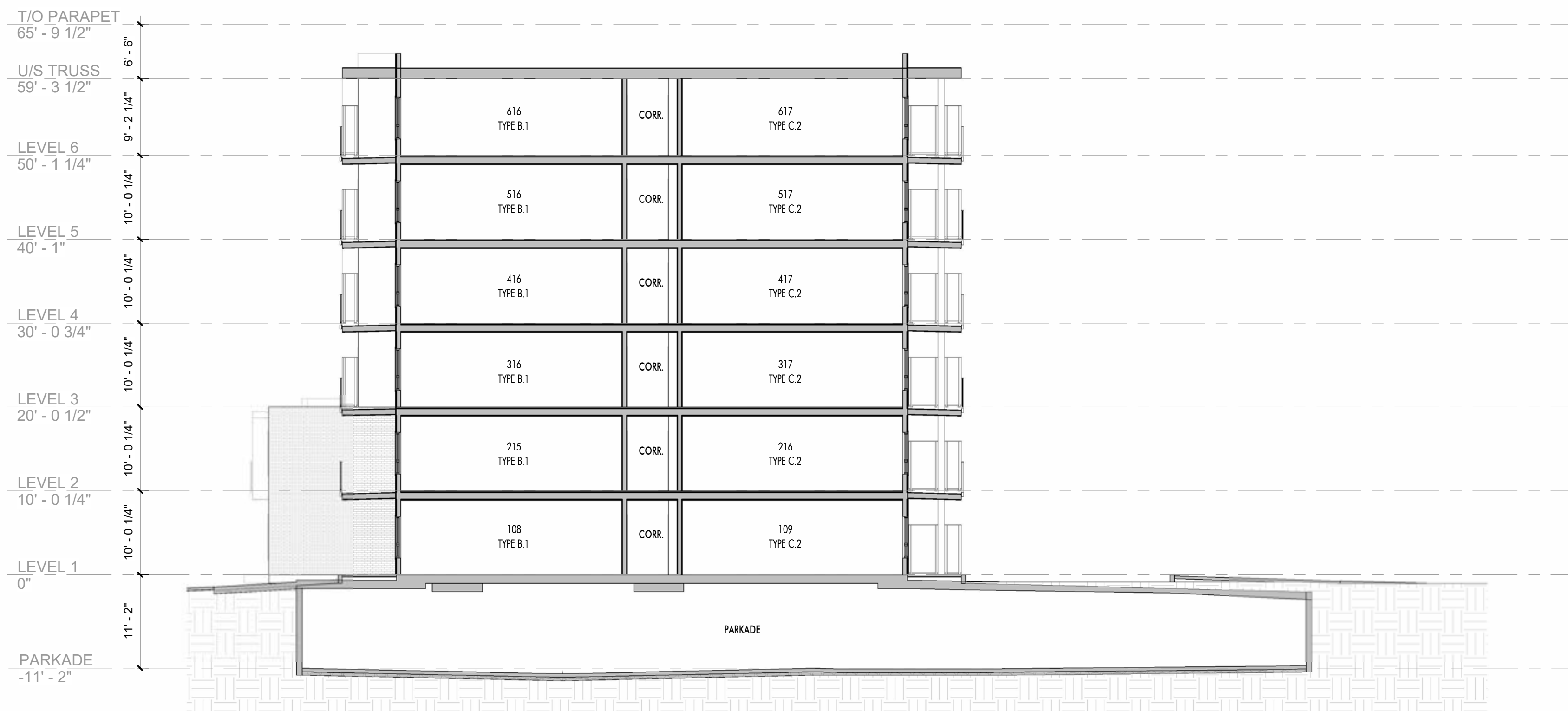


**FOR DP**

REVISION NO.	DATE	DESCRIPTION
11.14.25	FOR DISCUSSION	
11.24.25	FOR DISCUSSION	
12.05.25	FOR DP	
12.15.25	FOR REVIEW	
03.09.26	FOR DP	



**1** BUILDING SECTION 1  
A-300 3/32" = 1'-0"



**2** BUILDING SECTION 2  
A-300 3/32" = 1'-0"

**SCHEDULE B**  
This forms part of application  
# DP25-0234

Planner Initials **SO**

City of Kelowna  
COMMUNITY PLANNING

**FOR DP**

<b>PLOT DATE</b>	03.09.26
<b>PROJECT</b>	TROIKA - 165 DOUGALL RD N
<b>DRAWING TITLE</b>	<b>BUILDING SECTIONS</b>
<b>DRAWING NO.</b>	<b>A-300</b>





NORTHWEST VIEW FROM DOUGALL RD N AND SHEPHERD RD




SOUTHWEST VIEW FROM DOUGALL RD N



NORTHEAST VIEW FROM SHEPHERD RD

**SCHEDULE B**  
This forms part of application  
# DP25-0234

Planner Initials **SO**



**FOR DP**

