



Social Development

Supporting community well-being

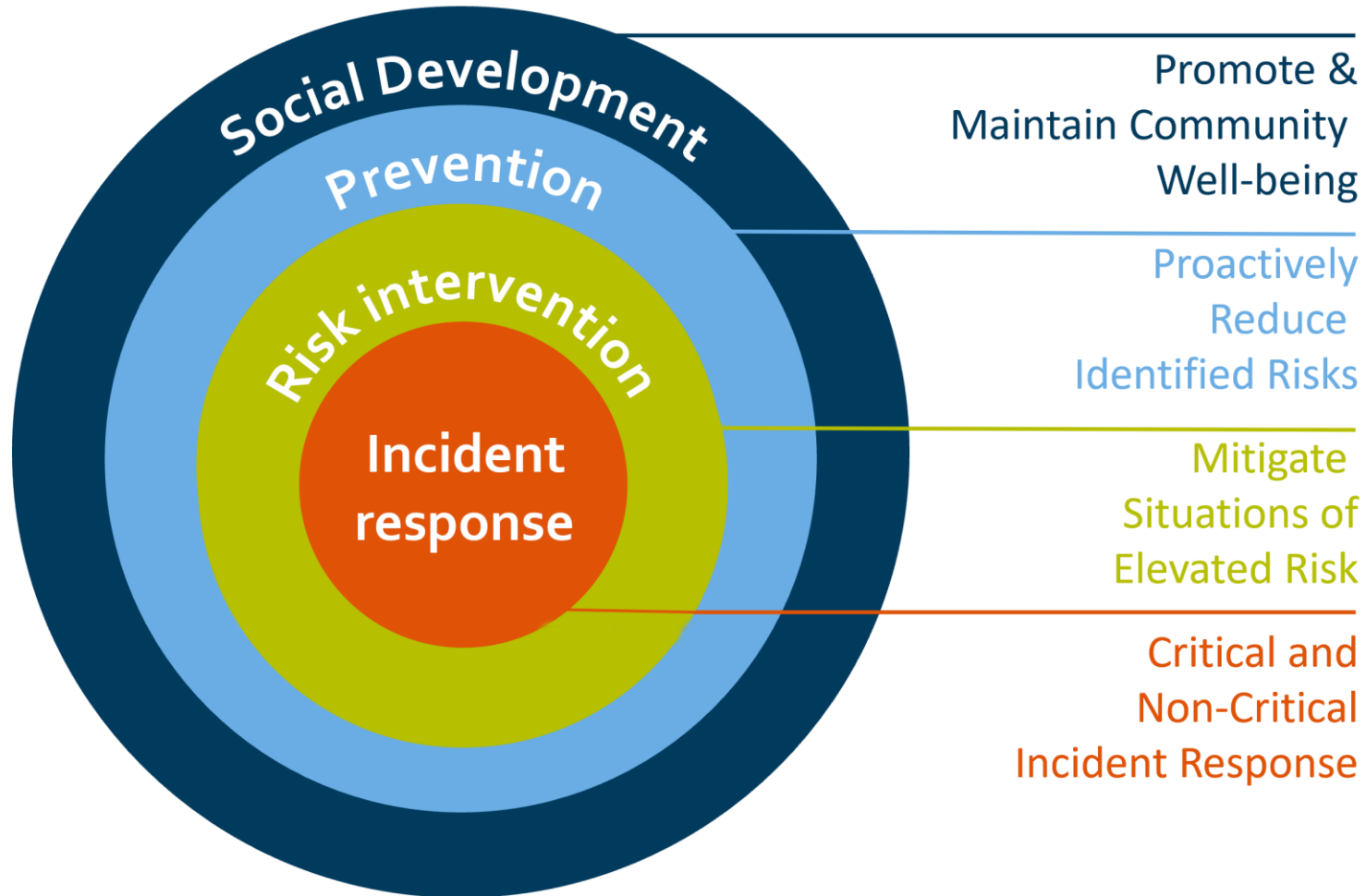


April 28, 2025



Understanding social development & social well-being

Social Development



Service Areas



Collaboration Across Departments

Housing & Homelessness	Prevention & Upstream	Greater Housing Choice	Funding & Advocacy	Digital Transformation
Communications	Communications	Housing Policy & Programs	Communications	Information Management
Community Safety	Community Safety	Partnerships	Partnerships	
Housing Policy & Programs	Partnerships	Real Estate		
Partnerships	Transportation			
Real Estate				



Social well-being

Overall **quality of life** that comes from positive social interactions, relationships, and sense of belonging within communities.

Why it's important:

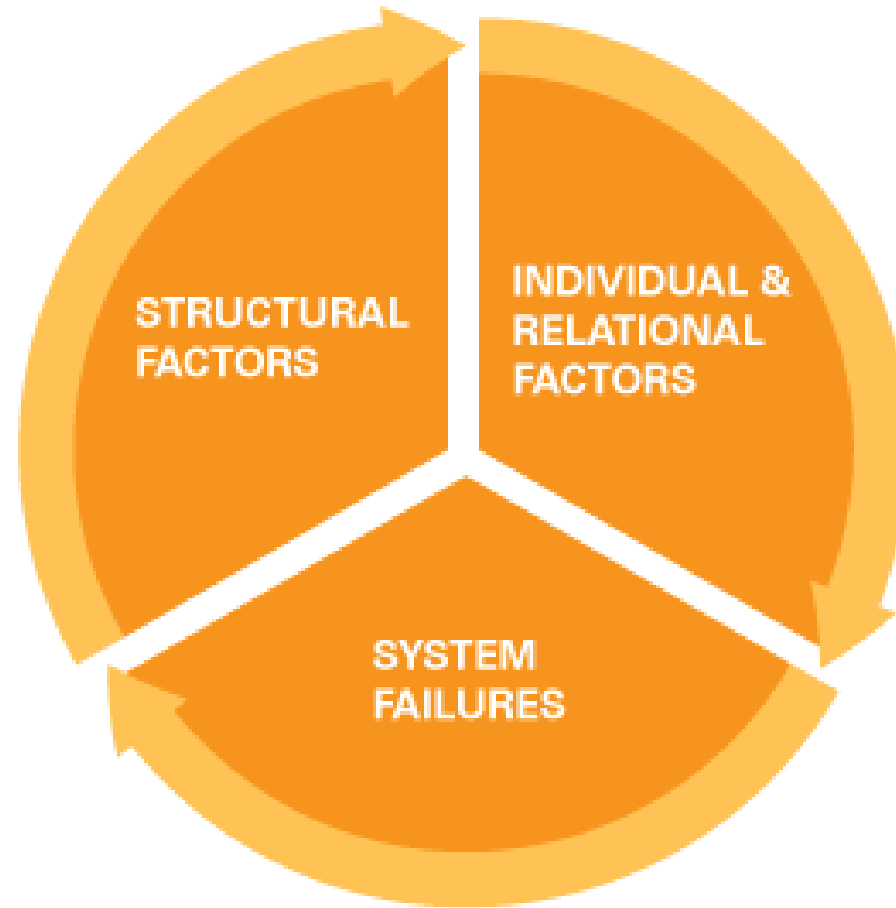
- Reduced isolation and loneliness
- Improved mental, physical and emotional health
- Individual and community resilience
- Democratic participation
- Sense of safety and crime prevention



Current challenges affecting social well-being

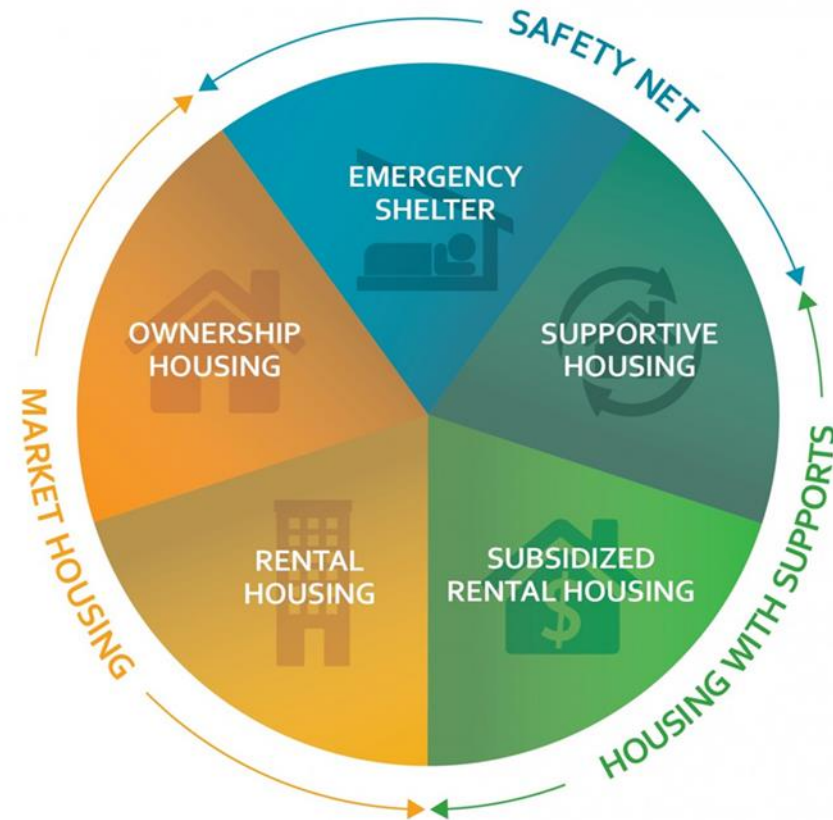
- Socioeconomic factors
- Housing affordability
- Mental health
- Social isolation and loneliness
- Indigenous rights and well-being
- Diversity and inclusion
- Access to healthcare
- Community safety

What causes homelessness?



Drive for greater housing choice

- Policy & Planning
 - Housing Action Plan
 - Complex Care
 - Purpose Built Shelter
- Projects
 - HEARTH
 - Overnight Sheltering
 - Extreme Weather Response



HEARTH – 180 total units



- Appaloosa
 - 3rd site, currently under construction
 - 60 units
 - Operator selected
 - Tenanting plan in progress
 - Neighbourhood integration work underway

Prevention Through Collaboration





Prevention & Upstream

Lead or support collective impact initiatives for addressing social inequity & insecurity in our community

- Community Social Development Grants
- High Risk Vulnerable Youth (HRVY)
- Community Cares



Community Social Development Grants

Support community organizations
dedicated to enhancing well-being &
resilience, focusing on equity, diversity &
inclusion

- Operational & Project grants
- 34 applications received
- ~570k in funds requested
- New funding stream – Mayor's Taskforce Recommendation

HRVY

High Risk Vulnerable Youth

Community-based initiative focused on preventing and intervening in gang involvement and exploitation of youth, offering wraparound supports and services through partnerships between organizations like Childhood Connections, Central Okanagan Public Schools and the City of Kelowna.





Community Cares Project

“Being part of the community care crew has motivated me in so many ways to stay positive in looking for long term employment”

“Building back to work confidence”

“Helps people back into routine and responsibility”

Digital Transformation



- Community Cares Project – *Digital Transformation*
- Outreach App & *City Mapping Software*



Making a shift to prevention

- Strengthening partnerships with community organizations
- Advocating for equity deserving groups
- Creating inclusive climate response
- Improving food security coordination



Questions?