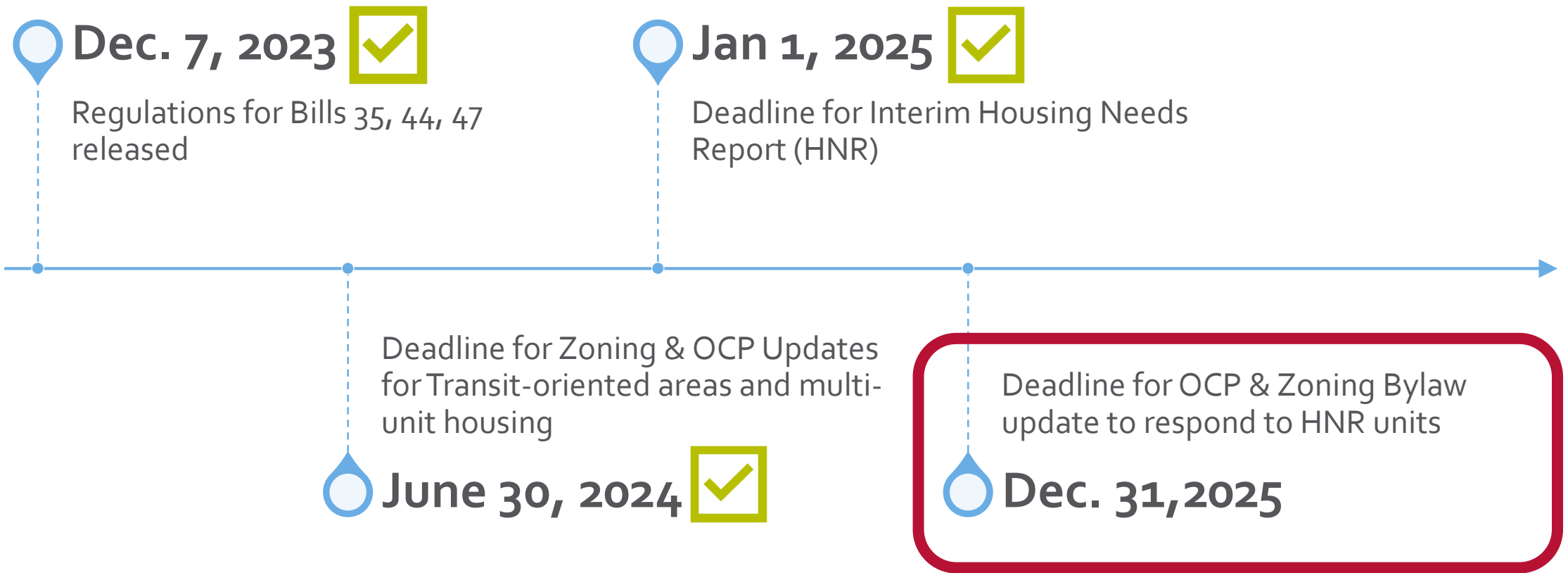




2025 OCP Update: **Revised Growth Scenario**

April 14, 2025

Provincial Housing Requirements



2025 OCP Update Requirements

1

Statements and map designations for residential development including:

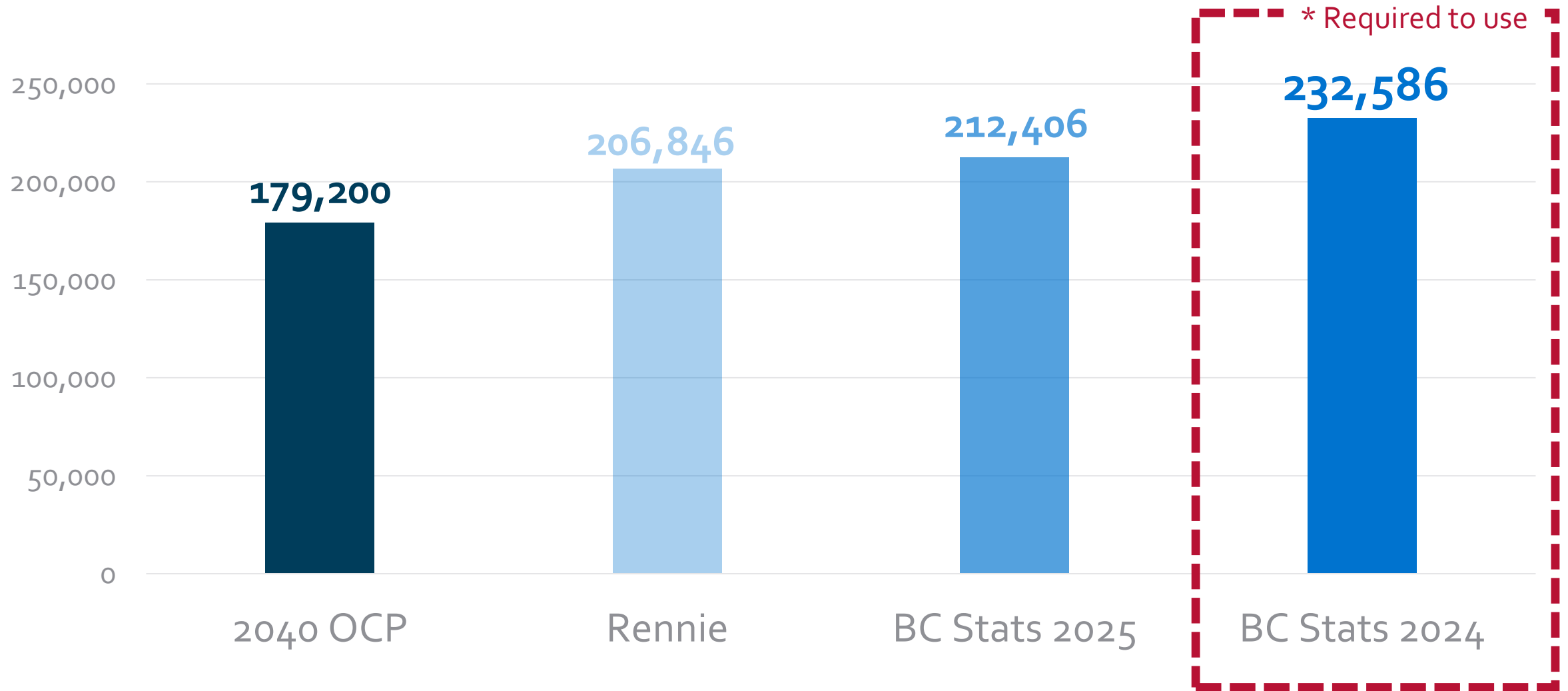
- Location, amount, type, and density

2

Housing policies addressing HNA including:

- Affordable, rental, special needs, family, seniors, shelter housing
- Housing close to alternative transportation infrastructure

2041 population projections



Interim Housing Needs Assessment

2021 - 2041

7,882 units (unmet need) + 36,689 units (growth)

= 44,571 new units

**2040 OCP anticipated 25,300 units*





Growing from 25,330 to 45,000 units

- Future land use designations
- Zoning Bylaw

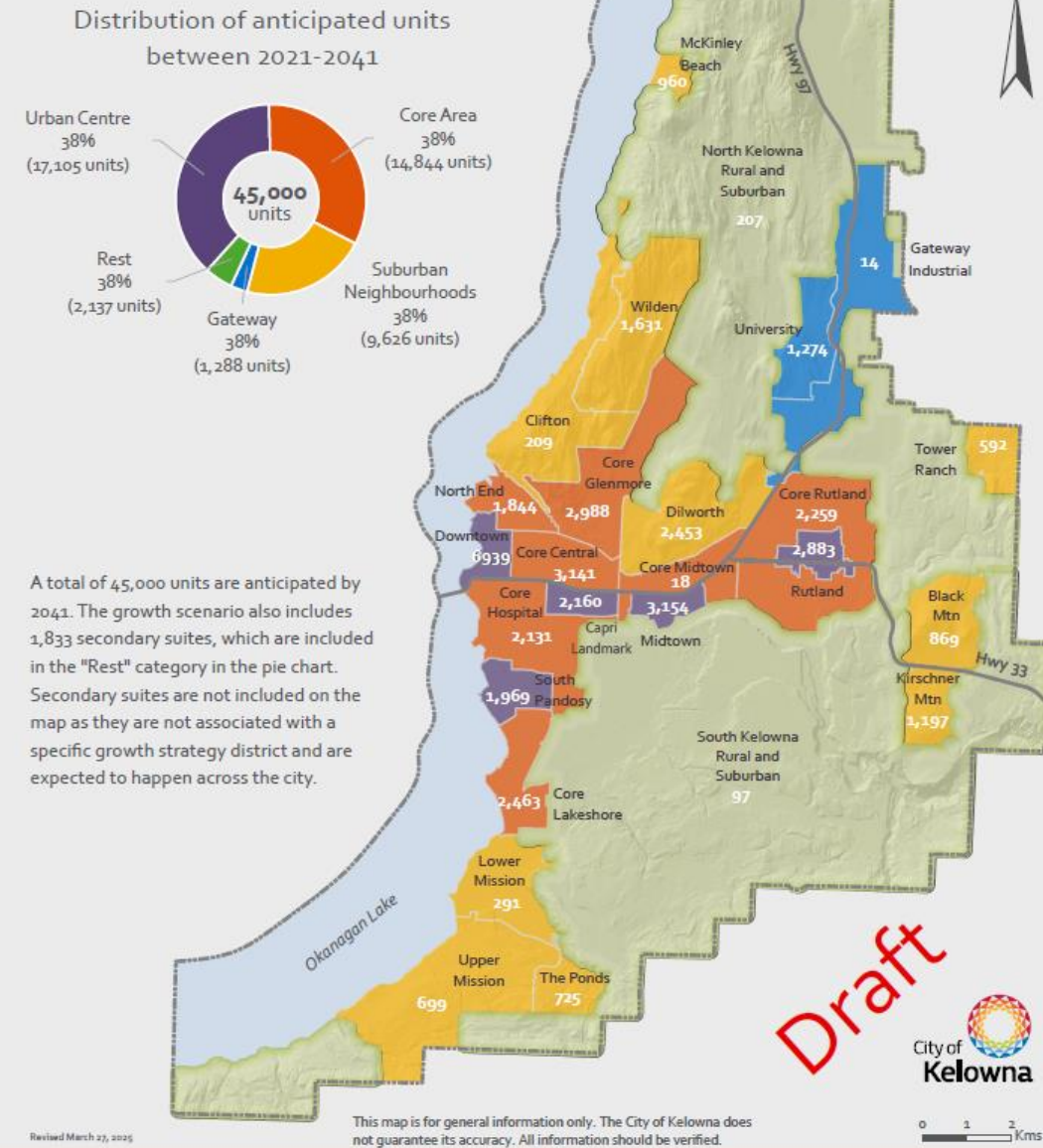


Ample
capacity

Model City informs where the new growth is expected to go.

Growing from 25,330 to 45,000 units

- Growth direction set by OCP Pillars
- Model City anticipates where growth will happen based on:
 - Permanent growth boundary
 - Current future land use
 - Current zoning
 - Current DA's, BP's, ASP's and known future developments
 - High development potential



Revised growth scenario



38%
Urban
Centres



33%
Core
Area



21%
Suburban



3%
Gateway



1%
Rest

*Secondary suites make up the remaining **4%** across the city

2041 housing mix

2040 OCP (2021 – 2040)

5,980 single/two units (24%)

19,350 multiple units (76%)

25,330 units total

2041 Growth Scenario (2021 – 2041)

15,600 ground oriented (35%)

29,400 apartment (65%)

45,000 units total



*Approx **total housing stock** (new and existing): 107,008 (54% ground oriented, 46% apartment)*



2025 OCP Update Process

NOW

Q3 2025

Interim Housing Needs Assessment



Revised Growth Scenario



Draft OCP Updates

In
process

Consultation

Finalize amendments

Present for 1st Reading

Draft OCP Updates

Chapter 2

- Housing & residential unit projections to 2041
- 20-year housing distribution

Chapters 4, 5, 6, 7, 8

- Select housing policy updates

Chapter 16

- New implementation actions and priorities





Questions?