



City of
Kelowna

OCP 24-0013 Multiple Addresses

OCP Mapping Amendments

Purpose

- ▶ To amend the Official Community Plan Map 3.1 by changing the Future Land Use classification of 100 parcels as described in Schedule 'A'

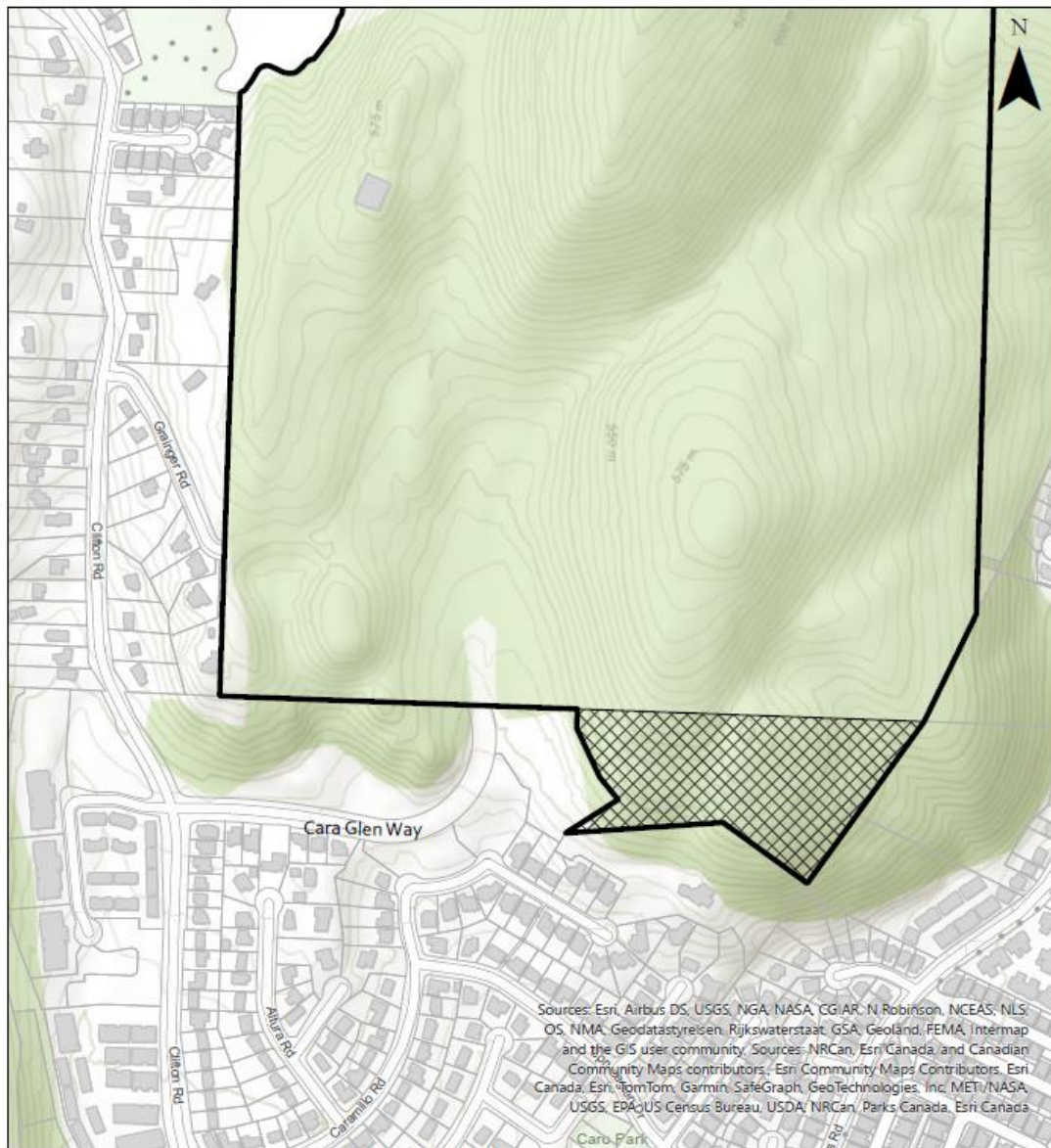
OCP Categories

Table: OCP Mapping Categories

<u>Number</u>	<u>Category</u>	<u>Number of Lots Affected</u>
1.	Administrative/Boundary	3
2.	FLU surrounding Okanagan College	97
	Total	100


OCP FLU Amendments

Administrative/Boundary			
No	Address	OCP FLU Details	Reason for Change
1.	(E OF) Grainger Road	Amend a portion from C-NHD – Core Area Neighbourhood designation to NAT – Natural Area designation as per Map 'A'	Amend FLU designation to reflect accurate boundaries of Knox Mountain Park East (parkland added through development).



Sources: Esri, Airbus DS, USGS, NGA, NASA, CGIAR, N Robinson, NCEAS, NLS, OS, NMA, Geodatastyreisen, Rijkswaterstaat, GSA, Geoland, FEMA, Intermap and the GIS user community. Sources: NRCan, Esri Canada, and Canadian Community Maps contributors. Esri Community Maps Contributors, Esri Canada, Esri, TomTom, Garmin, SafeGraph, GeoTechnologies, Inc, METI/NASA, USGS, EPA/US Census Bureau, USDA, NRCan, Parks Canada, Esri Canada

Map 'A' (E OF) Grainger Road
File: OCP24-0013

-  Subject Property
-  From C-NHD - Core Area Neighbourhood to NAT - Natural Area

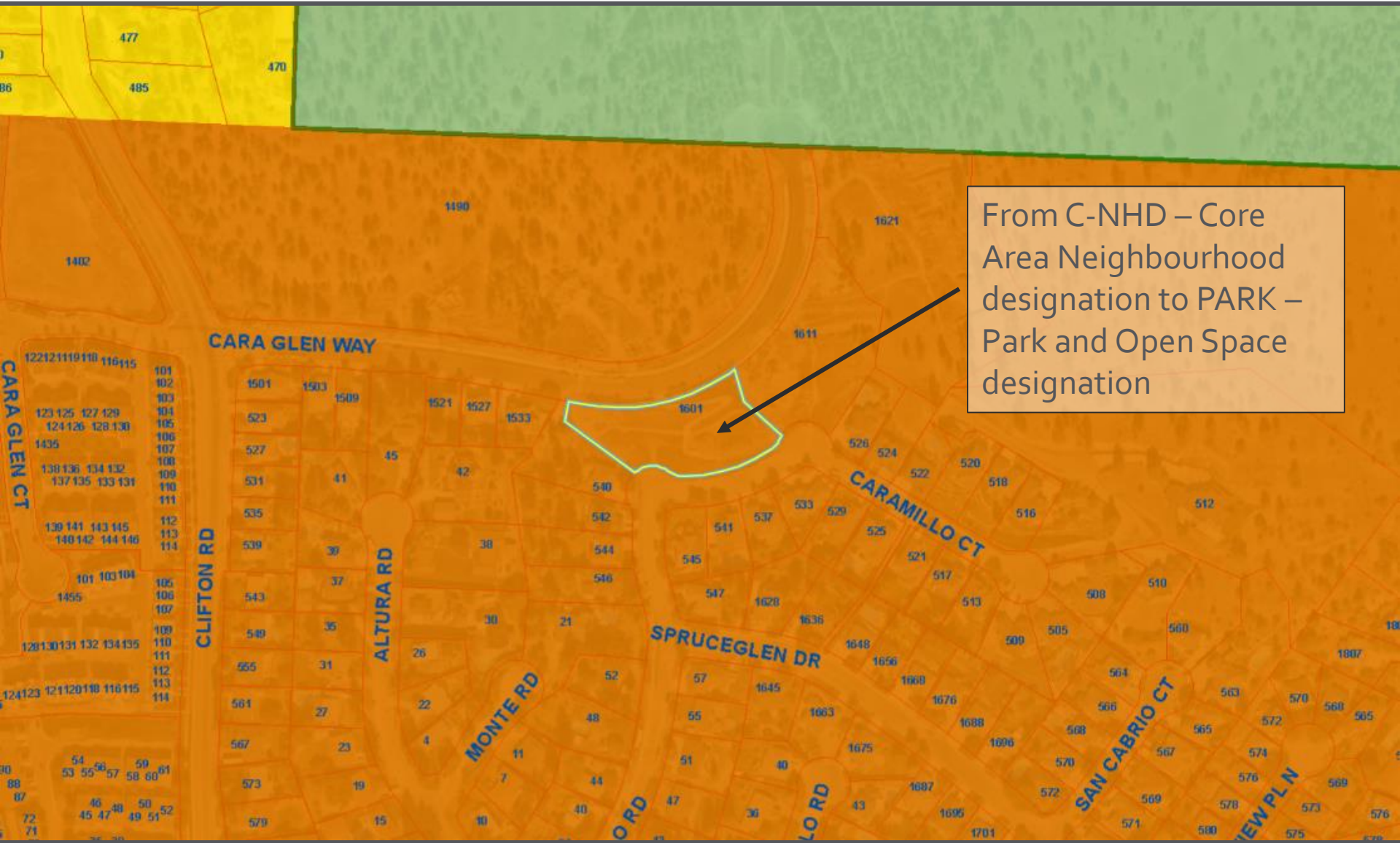


This map is for general information only. The City of Kelowna does not guarantee its accuracy. All information should be verified.
 Rev. Monday, November 25, 2024



OCP FLU Amendments

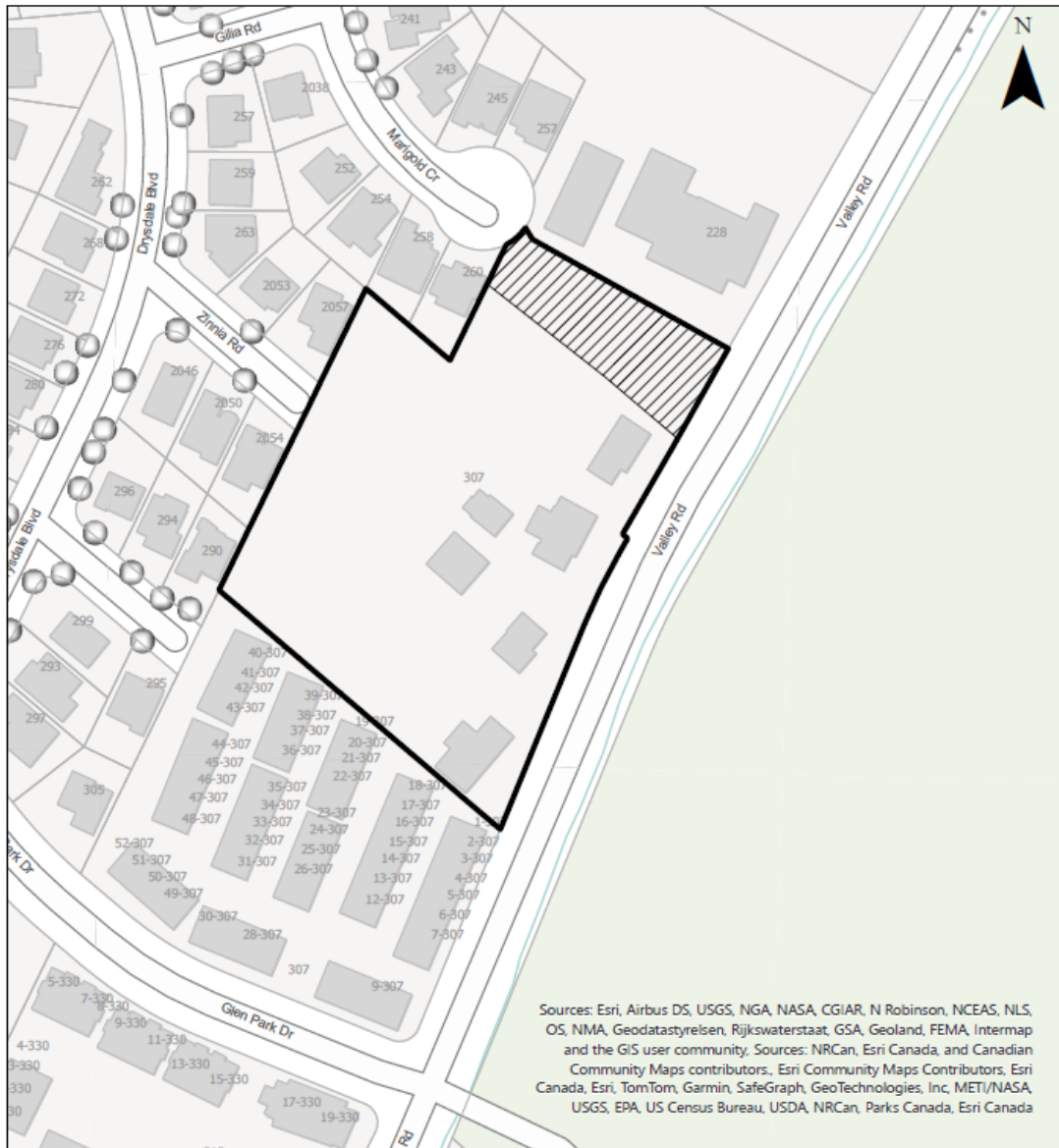
Administrative/Boundary			
No	Address	OCP FLU Details	Reason for Change
2.	1601 Cara Glen Way	Amend C-NHD – Core Area Neighbourhood designation to PARK – Park and Open Space designation	Amend FLU designation to reflect City owned parkland parcel contributed by developer. The parcel is already zoned P3.



From C-NHD – Core Area Neighbourhood designation to PARK – Park and Open Space designation


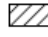
OCP FLU Amendments

Administrative Fixes			
No	Address	OCP FLU Details	Reason for Change
3.	307 Glen Park Drive	Amend split designated C-NHD – Core Area Neighbourhood designation and EDINST – Education / Institutional designation to C-NHD – Core Area Neighbourhood designation as per Map 'B'	Fix mapping to align Institutional FLU with the adjacent institutional lot.



Sources: Esri, Airbus DS, USGS, NGA, NASA, CGIAR, N Robinson, NCEAS, NLS, OS, NMA, Geodatastyrelsen, Rijkswaterstaat, GSA, Geoland, FEMA, Intermap and the GIS user community. Sources: NRCan, Esri Canada, and Canadian Community Maps contributors, Esri Community Maps Contributors, Esri Canada, Esri, TomTom, Garmin, SafeGraph, GeoTechnologies, Inc, METI/NASA, USGS, EPA, US Census Bureau, USDA, NRCan, Parks Canada, Esri Canada

Map 'B' 307 Glen Park Drive
File: OCP24-0013

-  Subject Property
-  From EDINST - Education / Institutional to C-NHD - Core Area Neighbourhood



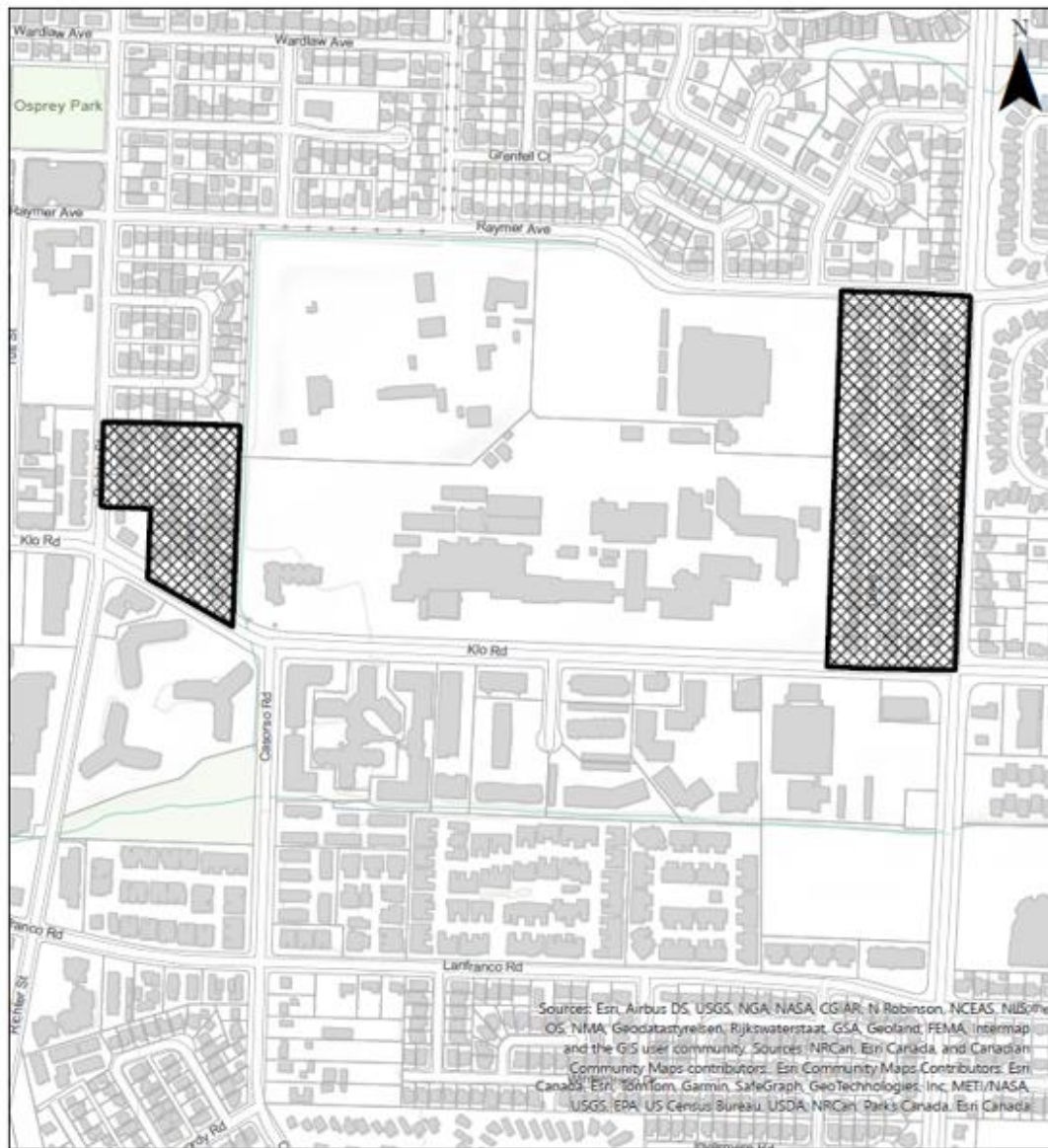
This map is for general information only. The City of Kelowna does not guarantee its accuracy. All information should be verified.



Rev. Monday, November 25, 2024

OCP FLU Amendments

FLU Surrounding Okanagan College			
No	Addresses	OCP FLU Details	Reason for Change
1.	97 Parcels	Amend from EDINST – Education / Institutional designation to UC – Urban Centre designation as per Map 'C'	Align lots within Urban Centre boundary to the Urban Centre FLU designation as there is no need to remain EDINST – Educational / Institutional without planned Okanagan College expansion.



Sources: Esri, Airbus DS, USGS, NGA, NASA, CGIAR, N Robinson, NCEAS, NISDF, OS, NIMA, Geodatasysteisen, Rijkswaterstaat, GSA, Geoland, FEMA, Intermap and the GIS user community. Sources: NRCan, Esri Canada, and Canadian Community Maps contributors. Esri Community Maps Contributors, Esri Canada, Esri, TomTom, Garmin, SafeGraph, GeoTechnologies, Inc, METI/NASA, USGS, EPA, US Census Bureau, USDA, NRCan, Parks Canada, Esri Canada

Map 'C' 97 Parcels in Pandosy Urban Centre
File: OCP24-0013

-  Subject Properties
-  From EDINST - Education / Institutional to UC - Urban Centre



This map is for general information only. The City of Kelowna does not guarantee its accuracy. All information should be verified.
 Rev. Monday, November 15, 2024



Staff Recommendation

- ▶ Staff recommend **support** for the proposed OCP Amendments and recommend the bylaw be forwarded to Public Hearing
 - ▶ Mapping / boundary adjustments
 - ▶ Conform to provincial legislation