

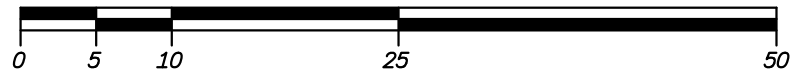
# SCHEDULE A

## REFERENCE PLAN TO ACCOMPANY BYLAW NO. 12390 (City of Kelowna) TO CLOSE PART OF ROAD DEDICATED ON PLAN 1037, DISTRICT LOT 139, OSOYOOS DIVISION YALE DISTRICT

PLAN EPP121800

PURSUANT TO SECTION 120 OF THE LAND TITLE ACT AND  
SECTION 40 OF THE COMMUNITY CHARTER.

BCGS 82E.083



The intended plot size of this plan is 432mm in width by  
560mm in height (C size) when plotted at a scale of 1:500

( All distances are in metres )

GCM 6459  
UTM Zone 11 coordinates  
Datum: NAD83(CSR) 4.0.0.BC.1  
UTM northing: 5529989.762  
UTM easting: 320920.821  
Estimated Absolute Accuracy  
Achieved: 0.02m.

GCM 6457  
UTM Zone 11 coordinates  
Datum: NAD83(CSR) 4.0.0.BC.1  
UTM northing: 5529977.118  
UTM easting: 321282.207  
Estimated Absolute Accuracy  
Achieved: 0.02m.

### LEGEND

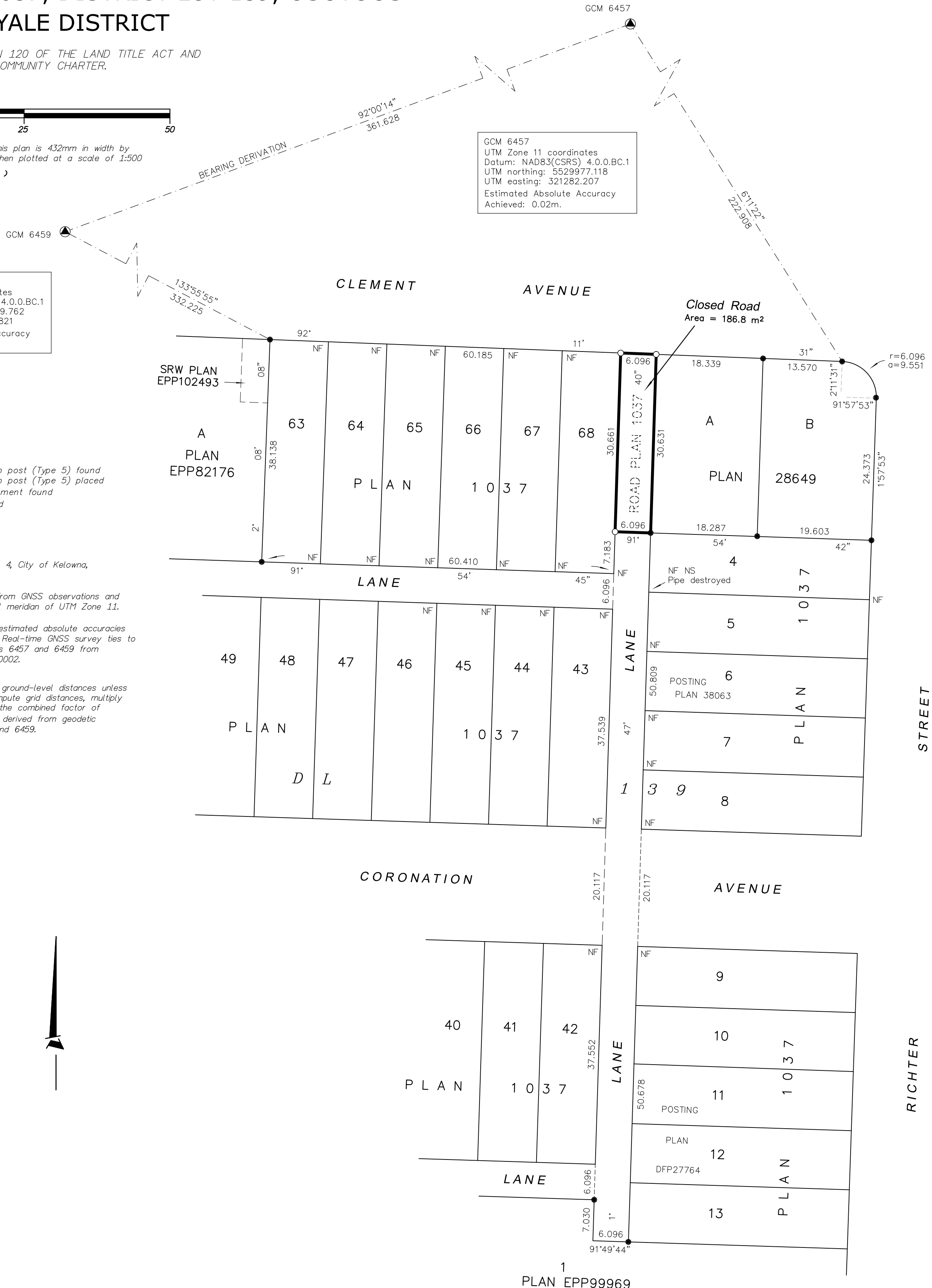
- Denotes Standard Iron post (Type 5) found
- Denotes Standard Iron post (Type 5) placed
- ⊙ Denotes Control Monument found
- NF Denotes nothing found

Integrated Survey Area No. 4, City of Kelowna,  
NAD83 (CSRS) 4.0.0.BC.1

Grid bearings are derived from GNSS observations and  
are referred to the central meridian of UTM Zone 11.

The UTM coordinates and estimated absolute accuracies  
achieved are derived from Real-time GNSS survey ties to  
geodetic control monuments 6457 and 6459 from  
Leica Smartnet station ID 0002.

This plan shows horizontal ground-level distances unless  
otherwise specified. To compute grid distances, multiply  
ground-level distances by the combined factor of  
0.99999417 which has been derived from geodetic  
control monuments 6457 and 6459.  
CGVD 28 (HTV2.0)



**RUNNALLS DENBY**

british columbia land surveyors

259A Lawrence Avenue Phone: (250)763-7322  
Kelowna, B.C. Fax: (250)763-4413  
V1Y 6L2 Email: rob@runnallsdenby.com

DWG. No.: 15950 CLOSED ROAD FILE: 15950

This plan lies within the Regional District of Central Okanagan.

The field survey represented by this plan was completed on  
the 13th day of June, 2022.

Robert T. Macdonald, BCLS 873