

# MISSION GROUP ENTERPRISES

## 346 LAWRENCE AVENUE - DEVELOPMENT


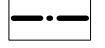






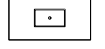
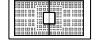
KELOWNA, BC

LANDSCAPE WORKS - DEVELOPMENT PERMIT PRIOR TO CONDITIONS RESPONSE

AUGUST 26, 2024

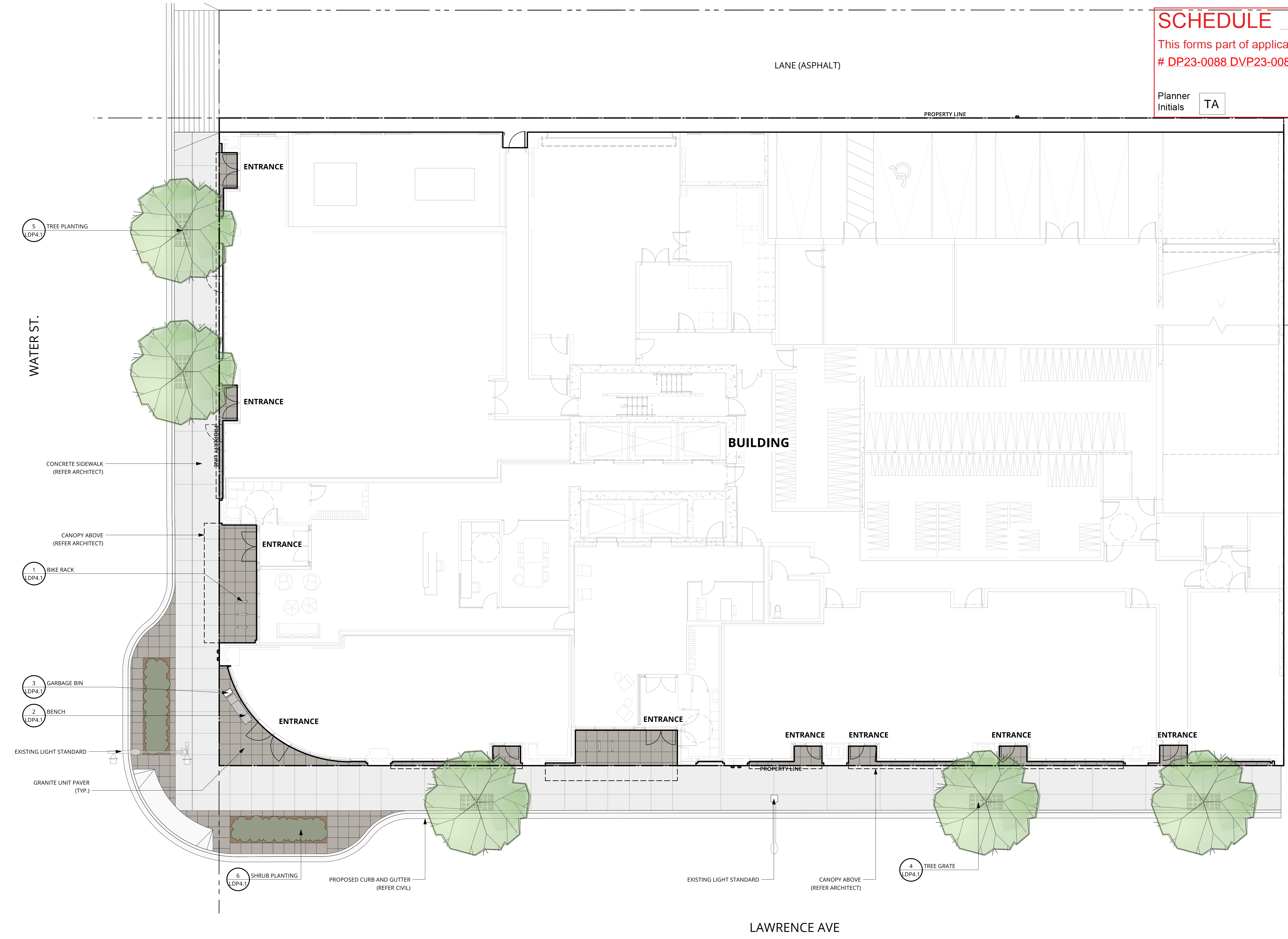
### LIST OF DRAWINGS

- LDP1 : COVER SHEET
- LDP2.1: LANDSCAPE PLAN - GROUND FLOOR
- LDP2.2: LANDSCAPE PLAN - 6TH FLOOR
- LDP2.3: LANDSCAPE PLAN - 13TH FLOOR
- LDP3.1: WATER CONSERVATION REPORT - GROUND FLOOR
- LDP3.2: WATER CONSERVATION REPORT - 6TH FLOOR & 13TH FLOOR
- LDP4.1: LANDSCAPE DETAILS

- LEGEND:**
-  PROPOSED TREES
  -  PROPERTY LINE
  -  CONCRETE PAVING (REFER ARCHITECT)
  -  GRANITE UNIT PAVERS
  -  SHRUB PLANTING
  -  PERENNIAL PLANTING
  -  BIKE RACK
  -  BENCH
  -  GARBAGE BIN
  -  TREE GRATE

QTY	BOTANICAL NAME	COMMON NAME	SIZE	ROOT
<b>Trees Deciduous</b>				
5	<i>Tilia americana 'Duros'</i>	True North Linden	6cm Cal	B&B
<b>Shrubs</b>				
4	<i>Buddleia x 'Miss Molly'</i>	'Miss Molly' Butterfly Bush	#02	Potted
15	<i>Buxus 'Green Gem'</i>	Green Gem Boxwood	#02	Potted
4	<i>Buxus 'Green Velvet'</i>	Green Velvet Boxwood	#02	Potted
4	<i>Hydrangea arborescens 'Annabelle'</i>	Smooth Hydrangea	#02	Potted
4	<i>Hydrangea serrata 'Bluebird'</i>	Mountain Hydrangea 'Bluebird'	#02	Potted
3	<i>Rhus aromatica 'Gro Low'</i>	Fragrant Sumac	#02	Potted
8	<i>Syringa x Bloomerang Dwarf Pink</i>	Dwarf Pink Lilac	#02	Potted
<b>Ornamental Grasses</b>				
5	<i>Deschampsia cespitosa 'Bronzeschleier'</i>	Bronze Veil Tufted Hairgrass	#01	Potted
3	<i>Miscanthus sinensis 'Morning Light'</i>	Maiden Grass 'Maiden Light'	#01	Potted
6	<i>Pennisetum alopecuroides 'Karley Rose'</i>	Karley Rose Fountain Grass	#01	Potted
<b>Ornamental Grasses</b>				
6	<i>Nepeta x foassenii 'Walker's Low'</i>	Walker's Low Catmint	#01	Potted
9	<i>Rudbeckia fulgida 'Goldsturm'</i>	Black-eyed Susan	#01	Potted

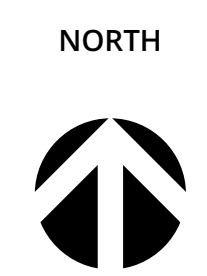
- NOTES:**
- THIS DRAWING DEPICTS FORM AND CHARACTER AND IS TO BE USED FOR DEVELOPMENT PERMIT SUBMISSION ONLY. IT IS NOT INTENDED FOR USE AS A CONSTRUCTION DOCUMENT.
  - THE LANDSCAPE DESIGN INDICATED HEREIN IS CONCEPTUAL; HOWEVER, IT REFLECTS THE MINIMUM ACCEPTABLE QUALITY AND SIZE.
  - ALL PLANT MATERIALS AND CONSTRUCTION METHODS SHALL CONFORM TO THE MINIMUM STANDARDS SET OUT IN THE CANADIAN LANDSCAPE STANDARD (CURRENT EDITION).
  - PLANT MATERIAL SELECTIONS INDICATED HEREIN ARE CONCEPTUAL ONLY. FINAL PLANTING SELECTIONS MAY VARY DEPENDING UPON AVAILABILITY.
  - ALL PLANTING BEDS SHALL RECEIVE 50mm OF COMPOSTED BARK MUCH.
  - ALL LANDSCAPE AREAS ARE TO BE IRRIGATED WITH AN EFFICIENT AUTOMATIC IRRIGATION SYSTEM.
  - SOIL DEPTH TO BE AS FOLLOWS: SHRUB AREAS=300mm MIN, TREES=1000mm OR PLANTER DEPTH.



# 346 LAWRENCE AVENUE - DEVELOPMENT

## MISSION GROUP ENTERPRISES

SEAL



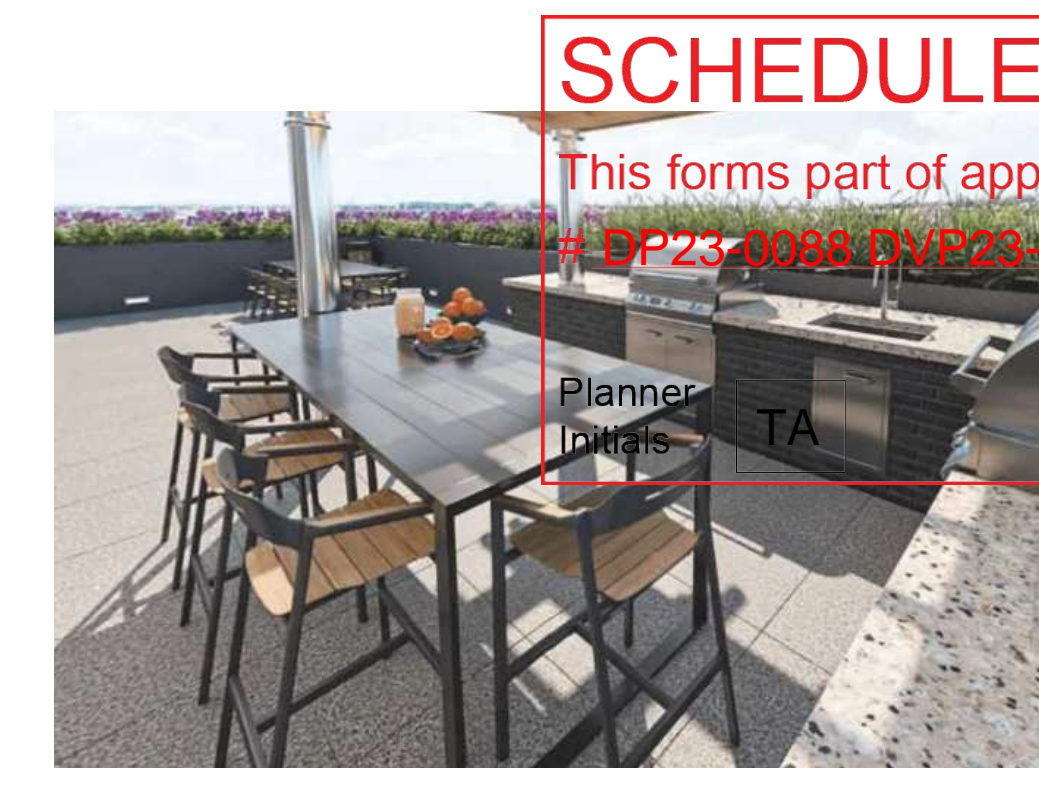
SCALE: 1:100

NO.	DESCRIPTION	DATE
2	ISSUED FOR DEVELOPMENT PERMIT PRIOR TO CONDITIONS RESPONSE #2 FINAL	2024-08-26
1	ISSUE FOR DP PRIOR TO CONDITIONS RESPONSE	2023-10-13
0	ISSUED FOR DEVELOPMENT PERMIT	2023-03-30

LANDSCAPE PLAN - GROUND FLOOR  
**LDP2.1**

PROJECT NO.: 22069 DATE: 2022-11-15





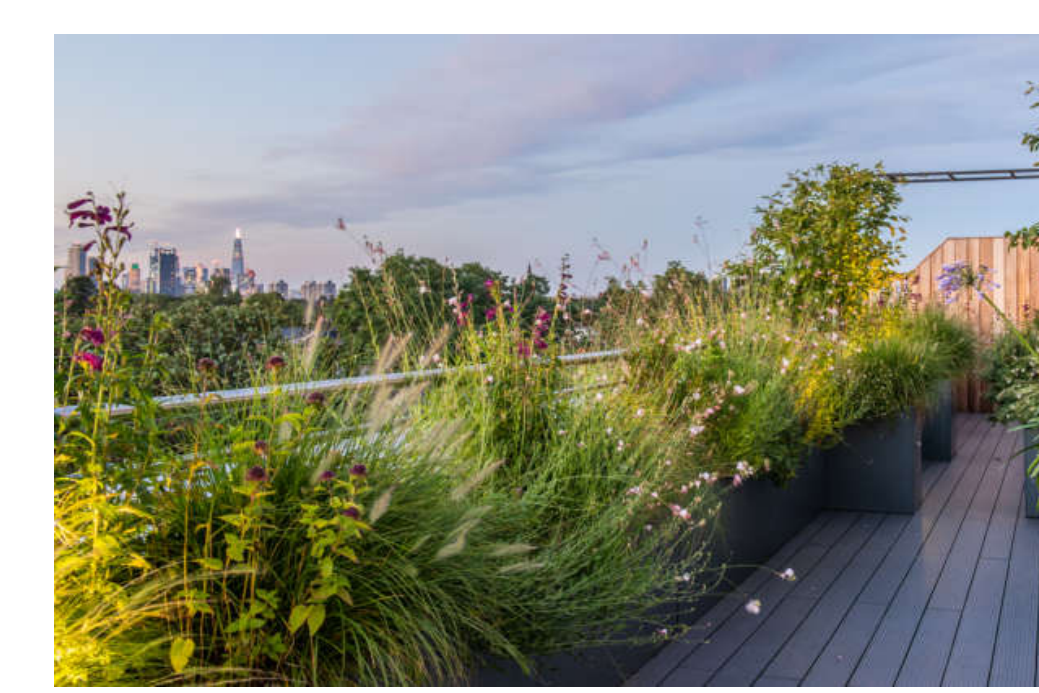
BBQ DINING AREA



RAISED PLANTERS



TABLES AND CHAIRS WITH UMBRELLAS



PLANTING

### SCHEDULE

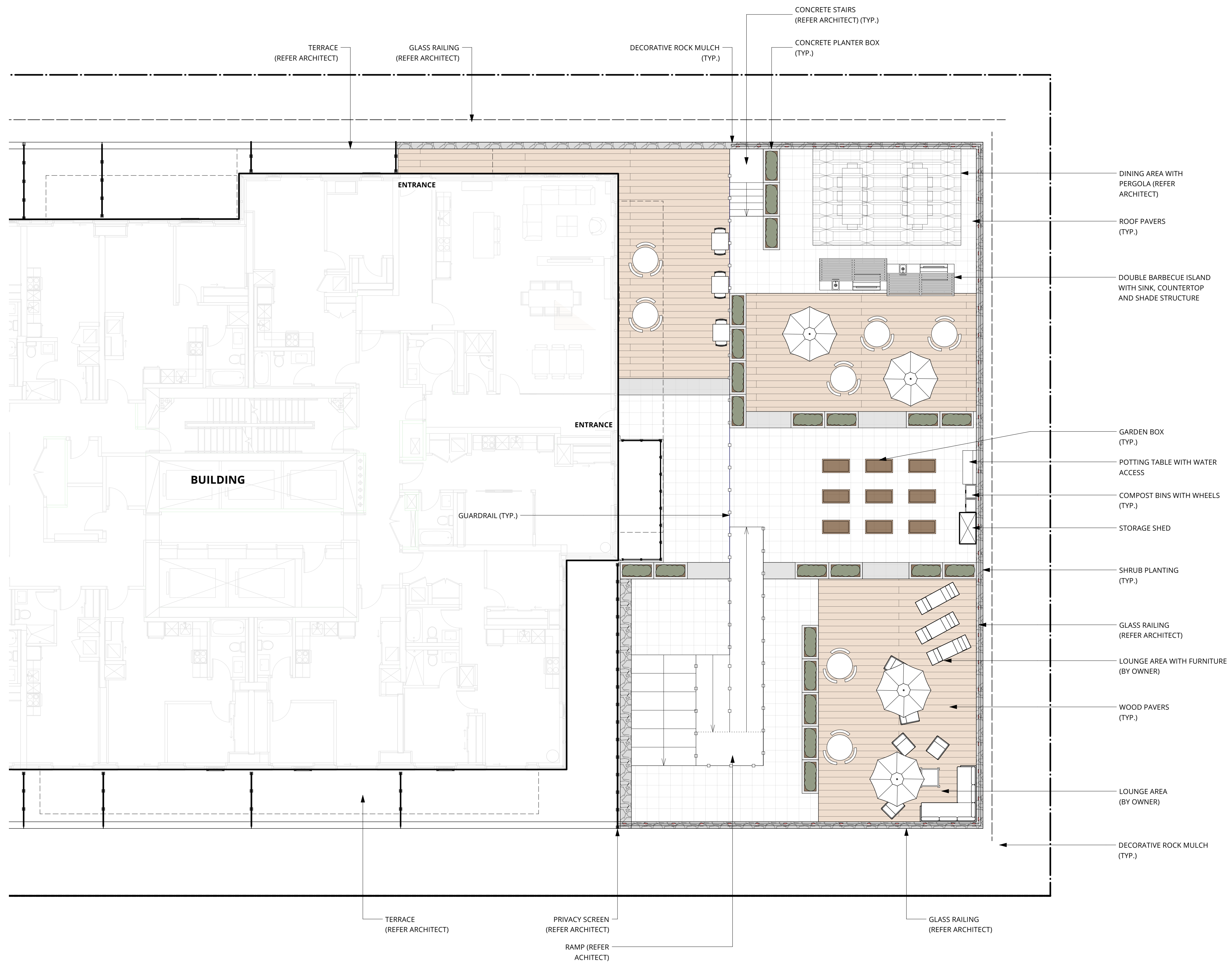
This forms part of application  
# DP23-0088, DVP23-0089

Planner  
Initials: TA



**LEGEND:**

	PROPERTY LINE
	ROOF PAVERS
	WOOD PAVERS
	DECORATIVE ROCK MULCH
	SHRUB PLANTING
	PERENNIAL PLANTING
	GARDEN BOX
	CONCRETE PLANTER BOX



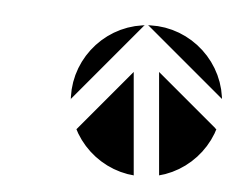
**TOTAL PLANT LIST**

QTY	BOTANICAL NAME	COMMON NAME	SIZE	ROOT
<b>Trees Deciduous</b>				
5	<i>Tilia americana 'Duros'</i>	True North Linden	6cm Cal	B&B
<b>Shrubs</b>				
4	<i>Buddleia x 'Miss Molly'</i>	'Miss Molly' Butterfly Bush	#02	Potted
15	<i>Buxus 'Green Gem'</i>	Green Gem Boxwood	#02	Potted
4	<i>Buxus 'Green Velvet'</i>	Green Velvet Boxwood	#02	Potted
4	<i>Hydrangea arborescens 'Annabelle'</i>	Smooth Hydrangea	#02	Potted
4	<i>Hydrangea serrata 'Bluebird'</i>	Mountain Hydrangea 'Bluebird'	#02	Potted
3	<i>Rhus aromatica 'Gro Low'</i>	Fragrant Sumac	#02	Potted
8	<i>Syringa x Bloomerang Dwarf Pink</i>	Dwarf Pink Lilac	#02	Potted
<b>Ornamental Grasses</b>				
5	<i>Deschampsia cespitosa 'Bronzeschleier'</i>	Bronze Veil Tufted Hairgrass	#01	Potted
3	<i>Miscanthus sinensis 'Morning Light'</i>	Maiden Grass 'Maiden Light'	#01	Potted
6	<i>Pennisetum alopecuroides 'Karley Rose'</i>	Karley Rose Fountain Grass	#01	Potted
<b>Ornamental Grasses</b>				
6	<i>Nepeta x faassenii 'Walker's Low'</i>	Walker's Low Catmint	#01	Potted
9	<i>Rudbeckia fulgida 'Goldsturm'</i>	Black-eyed Susan	#01	Potted

- NOTES:**
- THIS DRAWING DEPICTS FORM AND CHARACTER AND IS TO BE USED FOR DEVELOPMENT PERMIT SUBMISSION ONLY. IT IS NOT INTENDED FOR USE AS A CONSTRUCTION DOCUMENT.
  - THE LANDSCAPE DESIGN INDICATED HEREIN IS CONCEPTUAL; HOWEVER, IT REFLECTS THE MINIMUM ACCEPTABLE QUALITY AND SIZE.
  - ALL PLANT MATERIALS AND CONSTRUCTION METHODS SHALL CONFORM TO THE MINIMUM STANDARDS SET OUT IN THE CANADIAN LANDSCAPE STANDARD (CURRENT EDITION).
  - PLANT MATERIAL SELECTIONS INDICATED HEREIN ARE CONCEPTUAL ONLY. FINAL PLANTING SELECTIONS MAY VARY DEPENDING UPON AVAILABILITY.
  - ALL PLANTING BEDS SHALL RECEIVE 50mm OF COMPOSTED BARK MULCH.
  - ALL LANDSCAPE AREAS ARE TO BE IRRIGATED WITH AN EFFICIENT AUTOMATIC IRRIGATION SYSTEM.
  - SOIL DEPTH TO BE AS FOLLOWS: SHRUB AREAS=300mm MIN, TREES=1000mm OR PLANTER DEPTH.

SEAL

NORTH



SCALE: 1:100

**ISSUED FOR:**

NO.	DESCRIPTION	DATE
2	ISSUED FOR DEVELOPMENT PERMIT PRIOR TO CONDITIONS RESPONSE #2 FINAL	2024-08-26
1	ISSUE FOR DP PRIOR TO CONDITIONS RESPONSE	2023-10-13
0	ISSUED FOR DEVELOPMENT PERMIT	2023-03-30

LANDSCAPE PLAN - 6TH FLOOR  
**LDP2.2**

PROJECT NO.: 22069 DATE: 2022-11-15



# SCHEDULE C

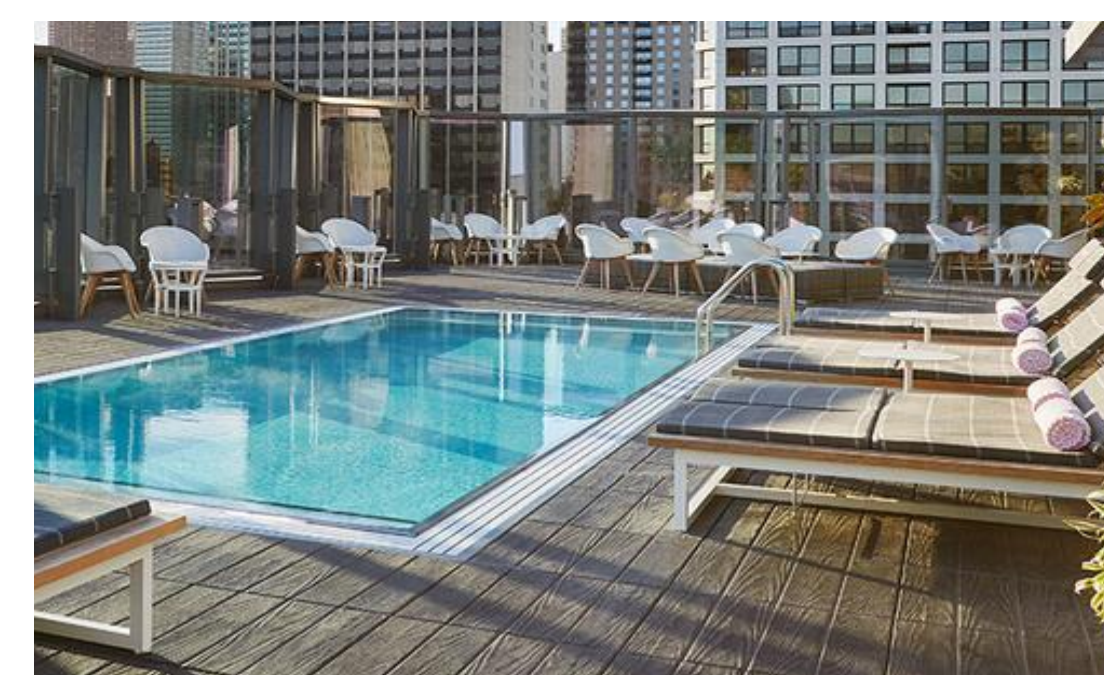
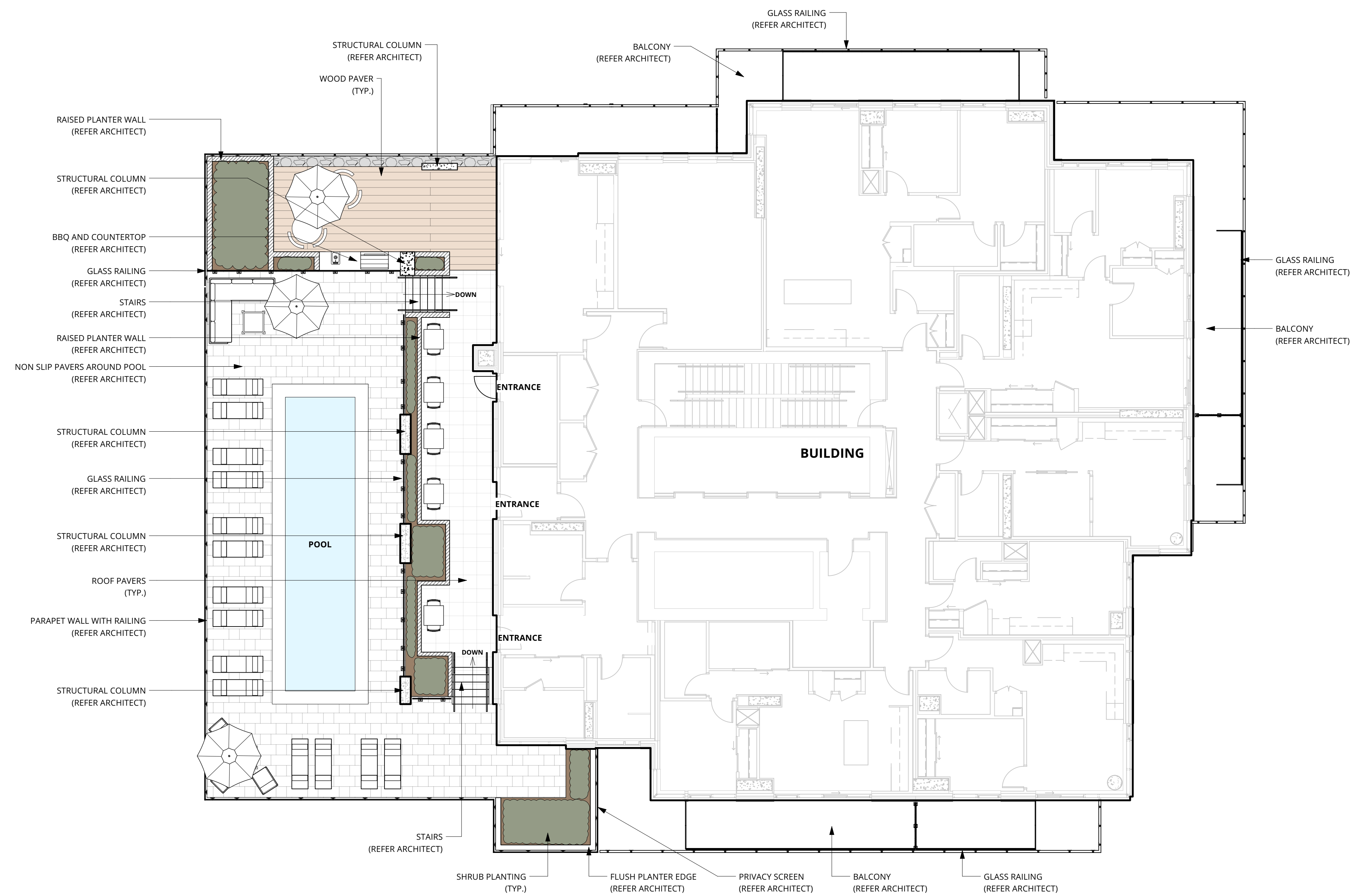
This forms part of application  
# DP23-0088 DVP23-0089

Planner Initials **TA**

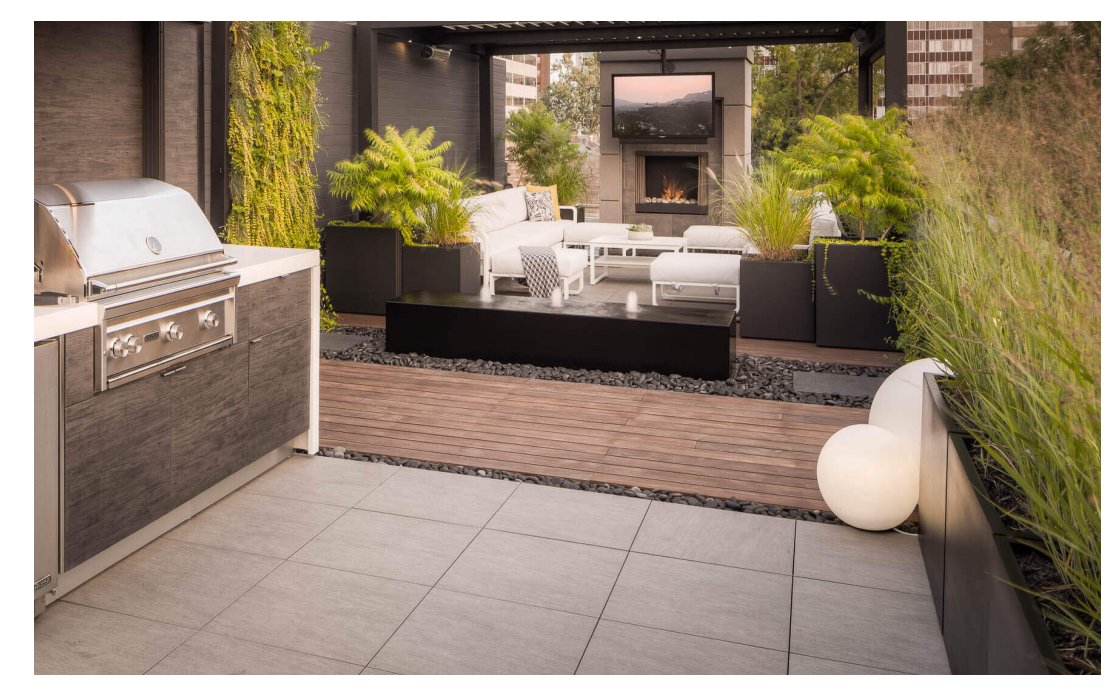


**LEGEND:**

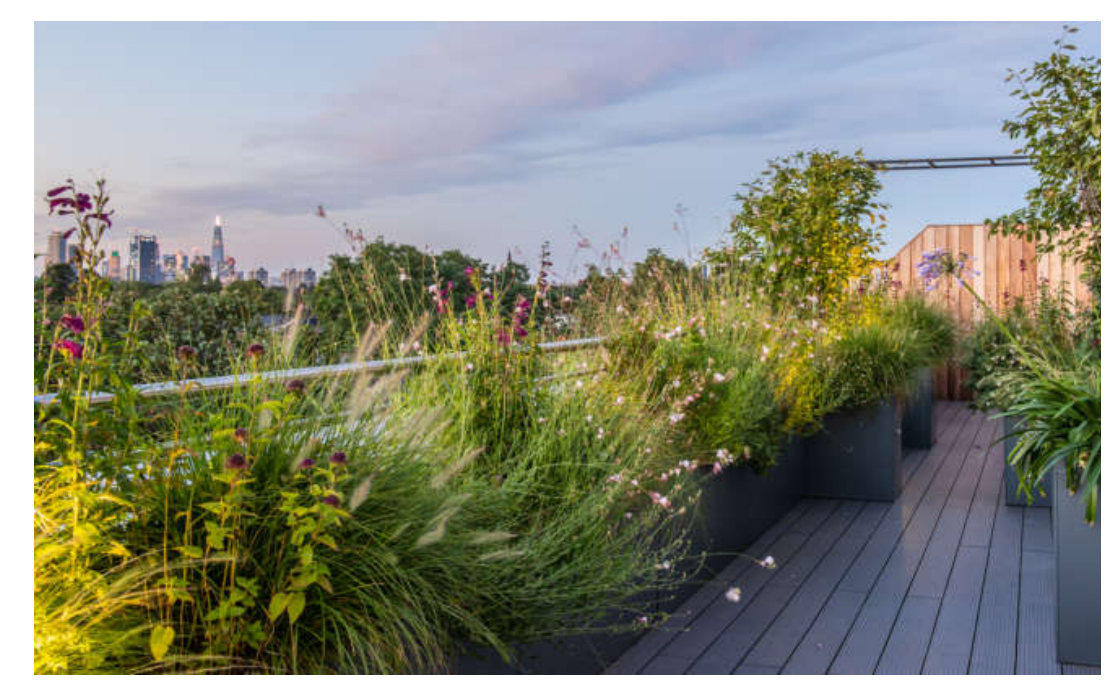
	PROPERTY LINE
	ROOF PAVERS
	WOOD PAVERS
	NON-SLIP PAVERS (REFER ARCHITECT)
	SHRUB PLANTING
	PERENNIAL PLANTING
	CONCRETE PLANTER BOX



POOL AREA



BBQ AREA



PLANTING

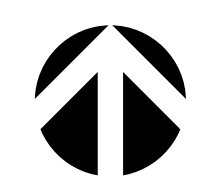
TOTAL PLANT LIST				
QTY	BOTANICAL NAME	COMMON NAME	SIZE	ROOT
<b>Trees Deciduous</b>				
5	<i>Tilia americana 'Duros'</i>	True North Linden	6cm Cal	B&B
<b>Shrubs</b>				
4	<i>Buddleia x 'Miss Molly'</i>	'Miss Molly' Butterfly Bush	#02	Potted
15	<i>Buxus 'Green Gem'</i>	Green Gem Boxwood	#02	Potted
4	<i>Buxus 'Green Velvet'</i>	Green Velvet Boxwood	#02	Potted
4	<i>Hydrangea arborescens 'Annabelle'</i>	Smooth Hydrangea	#02	Potted
4	<i>Hydrangea serrata 'Bluebird'</i>	Mountain Hydrangea 'Bluebird'	#02	Potted
3	<i>Rhus aromatica 'Gro Low'</i>	Fragrant Sumac	#02	Potted
8	<i>Syringa x Bloomerang Dwarf Pink</i>	Dwarf Pink Lilac	#02	Potted
<b>Ornamental Grasses</b>				
5	<i>Deschampsia cespitosa 'Bronzeschleier'</i>	Bronze Veil Tufted Hairgrass	#01	Potted
3	<i>Miscanthus sinensis 'Morning Light'</i>	Maiden Grass 'Maiden Light'	#01	Potted
6	<i>Pennisetum alopecuroides 'Karley Rose'</i>	Karley Rose Fountain Grass	#01	Potted
<b>Ornamental Grasses</b>				
6	<i>Nepeta x faassenii 'Walker's Low'</i>	Walker's Low Catmint	#01	Potted
9	<i>Rudbeckia fulgida 'Goldsturm'</i>	Black-eyed Susan	#01	Potted

**NOTES:**

- THIS DRAWING DEPICTS FORM AND CHARACTER AND IS TO BE USED FOR DEVELOPMENT PERMIT SUBMISSION ONLY. IT IS NOT INTENDED FOR USE AS A CONSTRUCTION DOCUMENT.
- THE LANDSCAPE DESIGN INDICATED HEREIN IS CONCEPTUAL; HOWEVER, IT REFLECTS THE MINIMUM ACCEPTABLE QUALITY AND SIZE.
- ALL PLANT MATERIALS AND CONSTRUCTION METHODS SHALL CONFORM TO THE MINIMUM STANDARDS SET OUT IN THE CANADIAN LANDSCAPE STANDARD (CURRENT EDITION).
- PLANT MATERIAL SELECTIONS INDICATED HEREIN ARE CONCEPTUAL ONLY. FINAL PLANTING SELECTIONS MAY VARY DEPENDING UPON AVAILABILITY.
- ALL PLANTING BEDS SHALL RECEIVE 50mm OF COMPOSTED BARK MUCH.
- ALL LANDSCAPE AREAS ARE TO BE IRRIGATED WITH AN EFFICIENT AUTOMATIC IRRIGATION SYSTEM.
- SOIL DEPTH TO BE AS FOLLOWS: SHRUB AREAS=300mm MIN, TREES=1000mm OR PLANTER DEPTH.

SEAL

NORTH



SCALE: 1:100

ISSUED FOR :		
NO.	DESCRIPTION	DATE
2	ISSUED FOR DEVELOPMENT PERMIT PRIOR TO CONDITIONS RESPONSE #2 FINAL	2024-08-26
1	ISSUE FOR DP PRIOR TO CONDITIONS RESPONSE	2023-10-13
0	ISSUED FOR DEVELOPMENT PERMIT	2023-03-30



**SCHEDULE C**

This forms part of application  
# DP23-0088 DVP23-0089

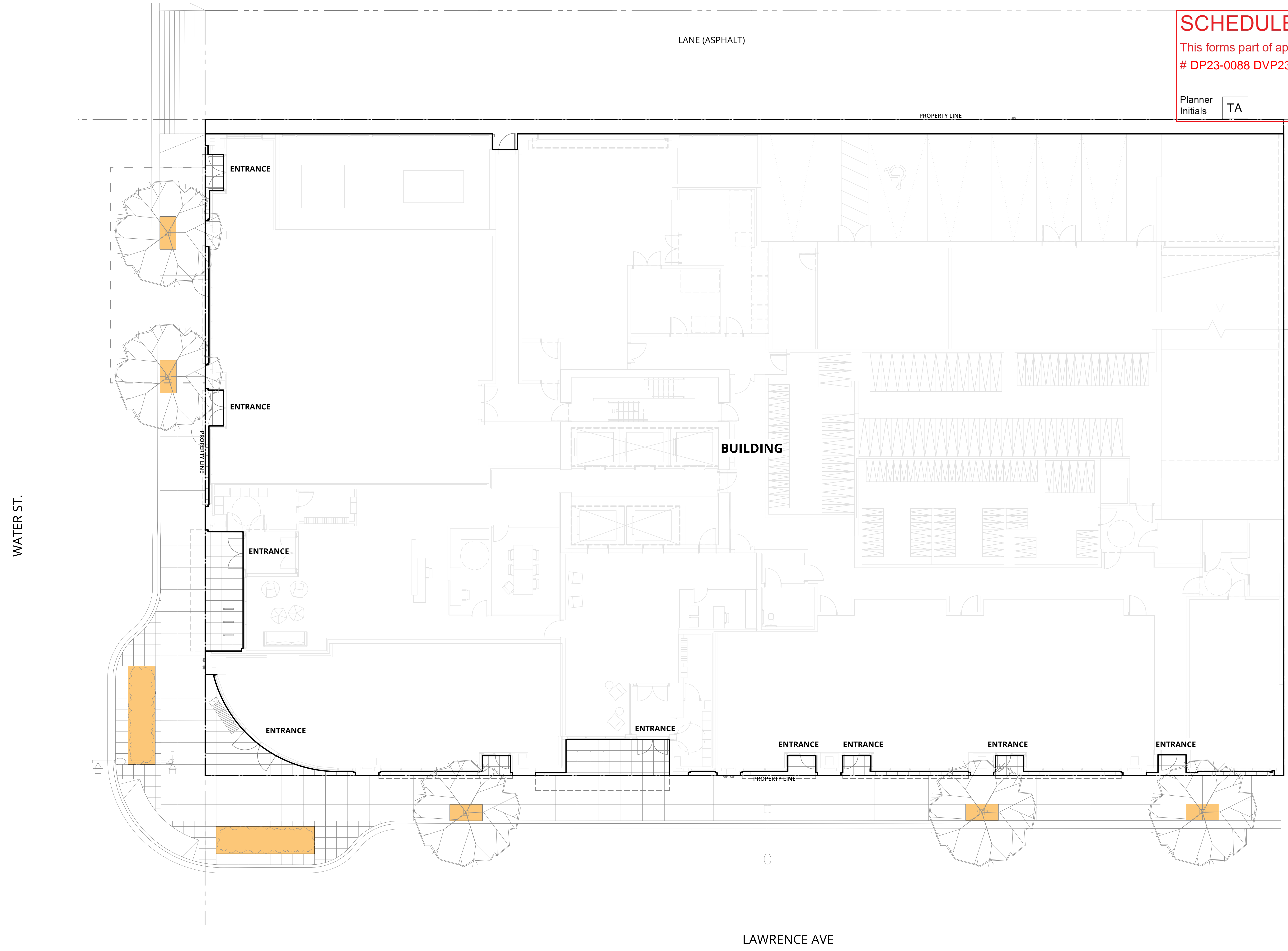
Planner Initials TA



City of Kelowna  
COMMUNITY PLANNING

LEGEND:

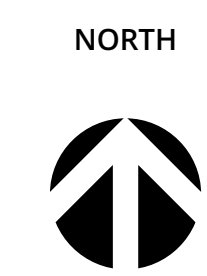
- LOW WATER REQUIREMENTS
- MEDIUM WATER REQUIREMENTS



# 346 LAWRENCE AVENUE - DEVELOPMENT

## MISSION GROUP ENTERPRISES

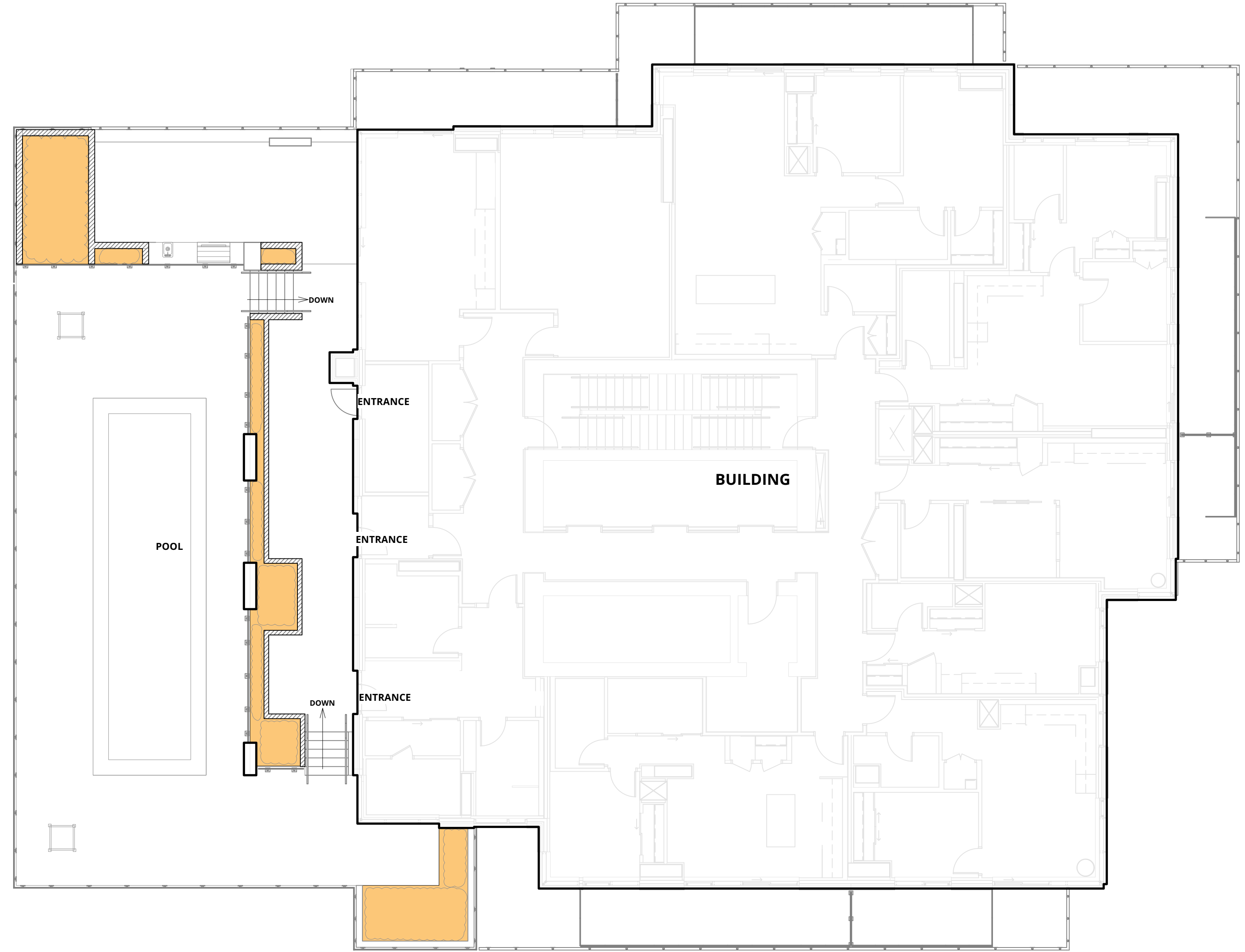
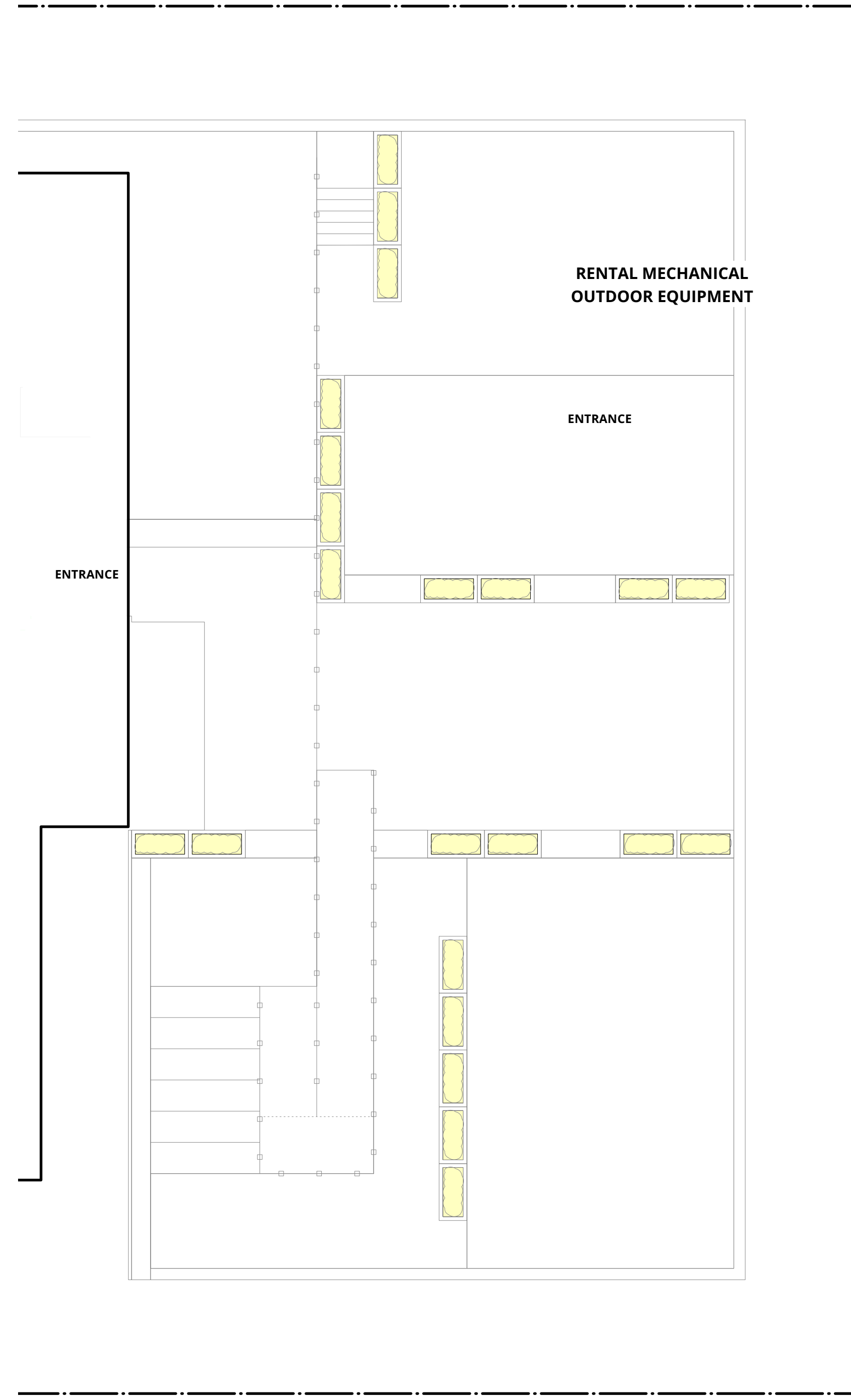
SEAL



SCALE: 1 : 100

ISSUED FOR :		
NO.	DESCRIPTION	DATE
2	ISSUED FOR DEVELOPMENT PERMIT PRIOR TO CONDITIONS RESPONSE #2 FINAL	2024-08-26
1	ISSUE FOR DP PRIOR TO CONDITIONS RESPONSE	2023-10-13
0	ISSUED FOR DEVELOPMENT PERMIT	2023-03-30

### WATER CONSERVATION PLAN - GROUND FLOOR LDP3.1

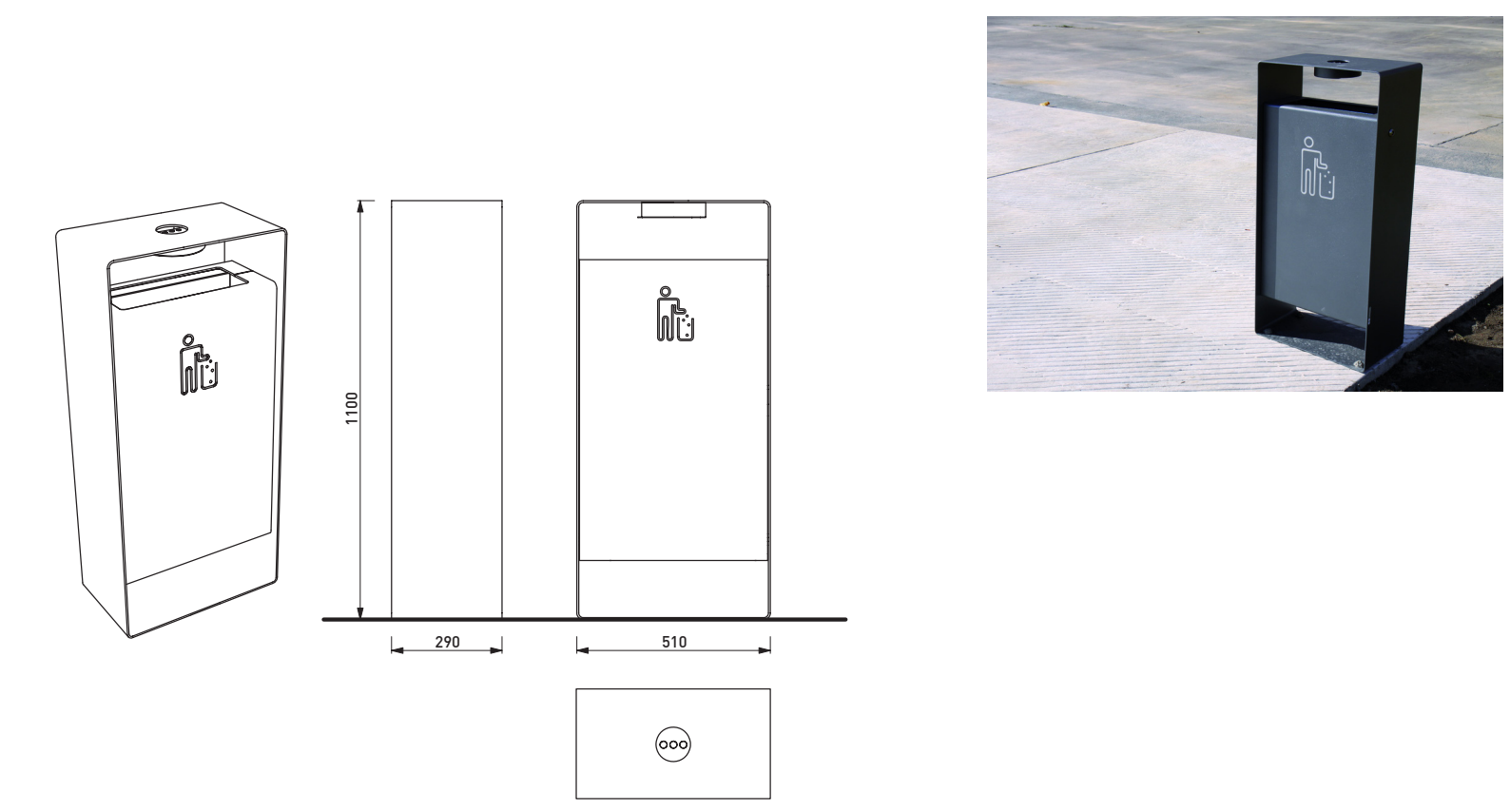


ISSUED FOR :		
NO.	DESCRIPTION	DATE
2	ISSUED FOR DEVELOPMENT PERMIT PRIOR TO CONDITIONS RESPONSE #2 FINAL	2024-08-26
1	ISSUE FOR DP PRIOR TO CONDITIONS RESPONSE	2023-10-13
0	ISSUED FOR DEVELOPMENT PERMIT	2023-03-30



Planner Initials TA

NOTES:  
 1. GARBAGE BIN TO BE #KR120 - RADIUM GARBAGE BIN. MATERIAL: STAINLESS STEEL COLOUR: STANDARD. INSTALL PER MANUFACTURER'S RECOMMENDATIONS. SURFACE MOUNTED. AVAILABLE FROM MMCITE 1 800 890 6257 OR PRE APPROVED EQUAL.



3 GARBAGE BIN  
 LDP2.1 NTS

SEAL

ISSUED FOR :		
2	ISSUED FOR DEVELOPMENT PERMIT PRIOR TO CONDITIONS RESPONSE #2 FINAL	2024-08-26
1	ISSUE FOR DP PRIOR TO CONDITIONS RESPONSE	2023-10-13
0	ISSUED FOR DEVELOPMENT PERMIT	2023-03-30
NO.	DESCRIPTION	DATE

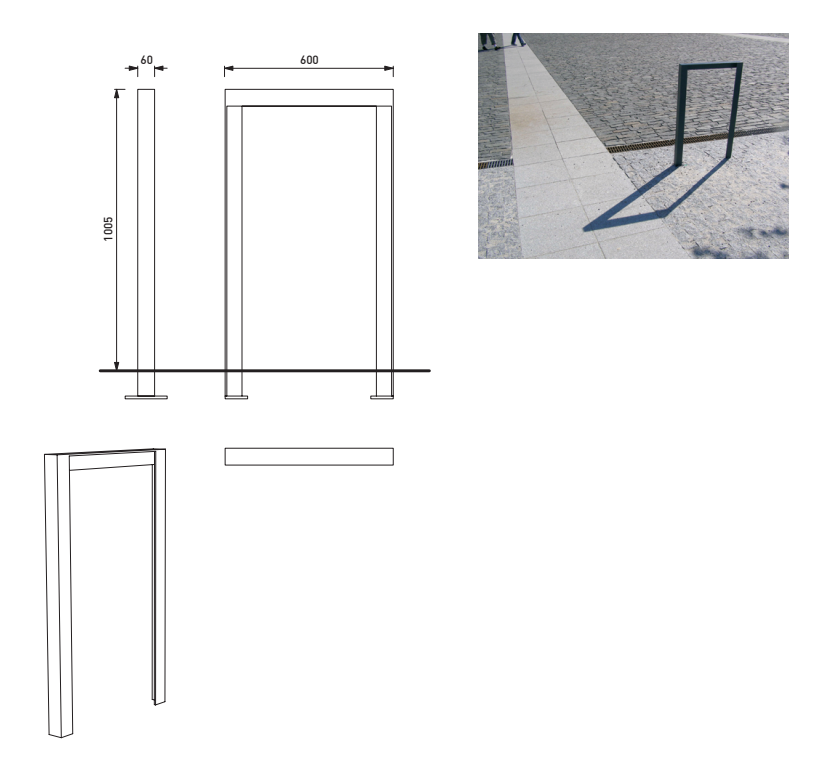
LANDSCAPE DETAILS

**LDP4.1**

SCALE : AS SHOWN

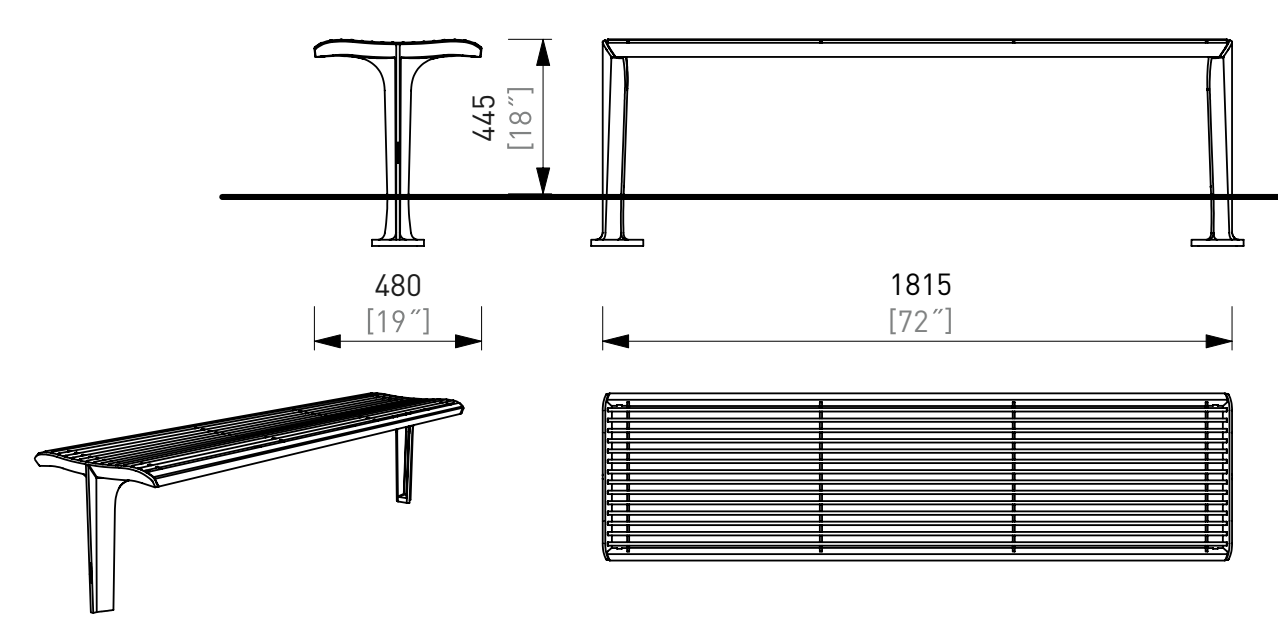
PROJECT NO. : 22069 DATE : 2022-11-15

NOTES:  
 1. BIKE RACK TO BE #SL505 - LOTLIMIT BIKE RACK. MATERIAL: STEEL COLOUR: BLACK. INSTALL PER MANUFACTURER'S RECOMMENDATIONS, ANCHORED BELOW GROUND. AVAILABLE FROM MMCITE 1 800 890 6257 OR PRE APPROVED EQUAL.



1 BIKE RACK  
 LDP2.1 NTS

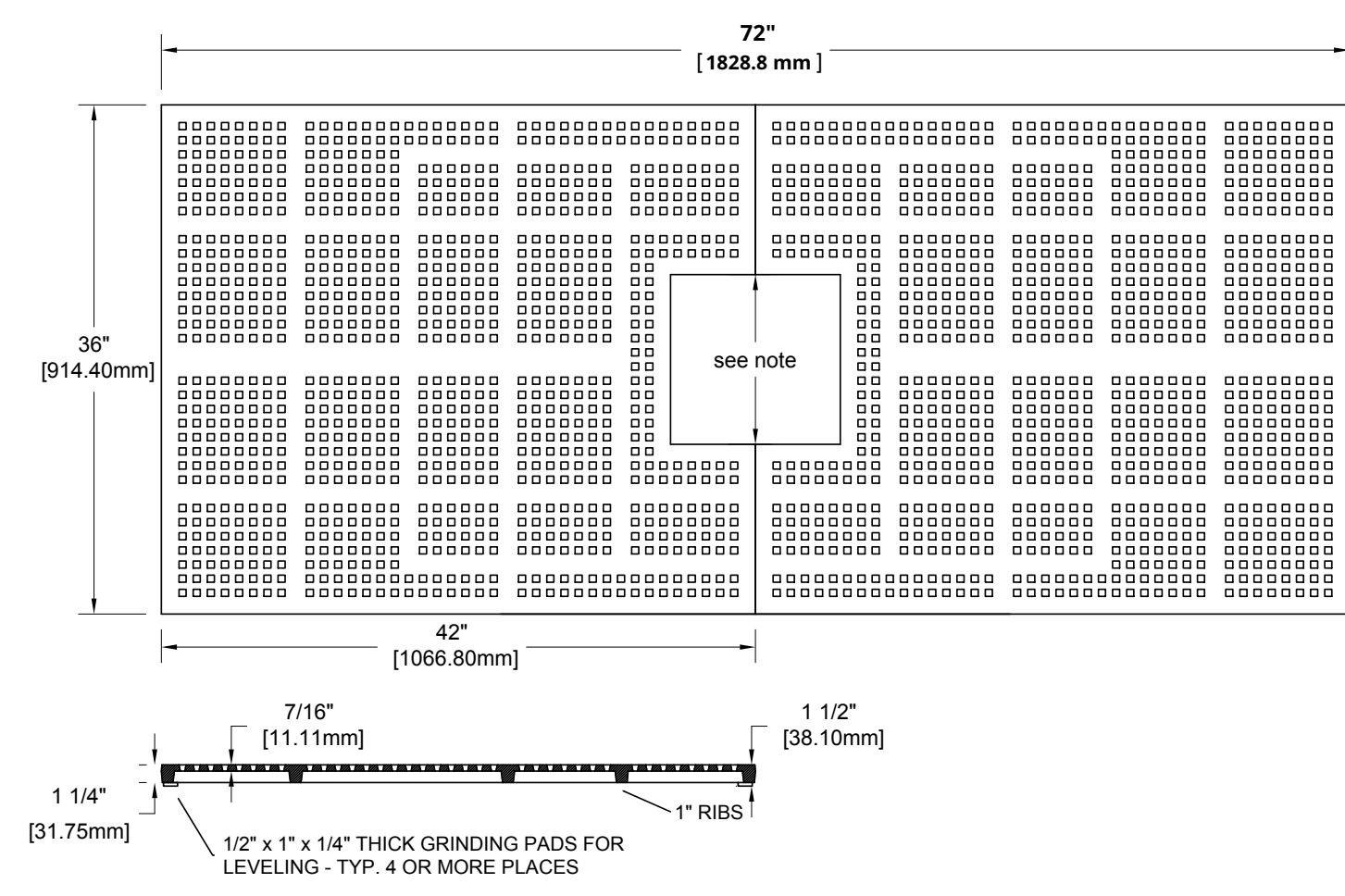
NOTES:  
 1. BENCH TO BE #MS-211 EMALU SOLO BENCH. MATERIAL-CAST ALUMINUM STRUCTURE, TROPICAL HARDWOOD. INSTALL PER MANUFACTURER'S RECOMMENDATIONS, ANCHORED UNDER GROUND. AVAILABLE FROM MMCITE 1 800 890 6257 OR PRE APPROVED EQUAL.



2 BENCH  
 LDP2.1 NTS

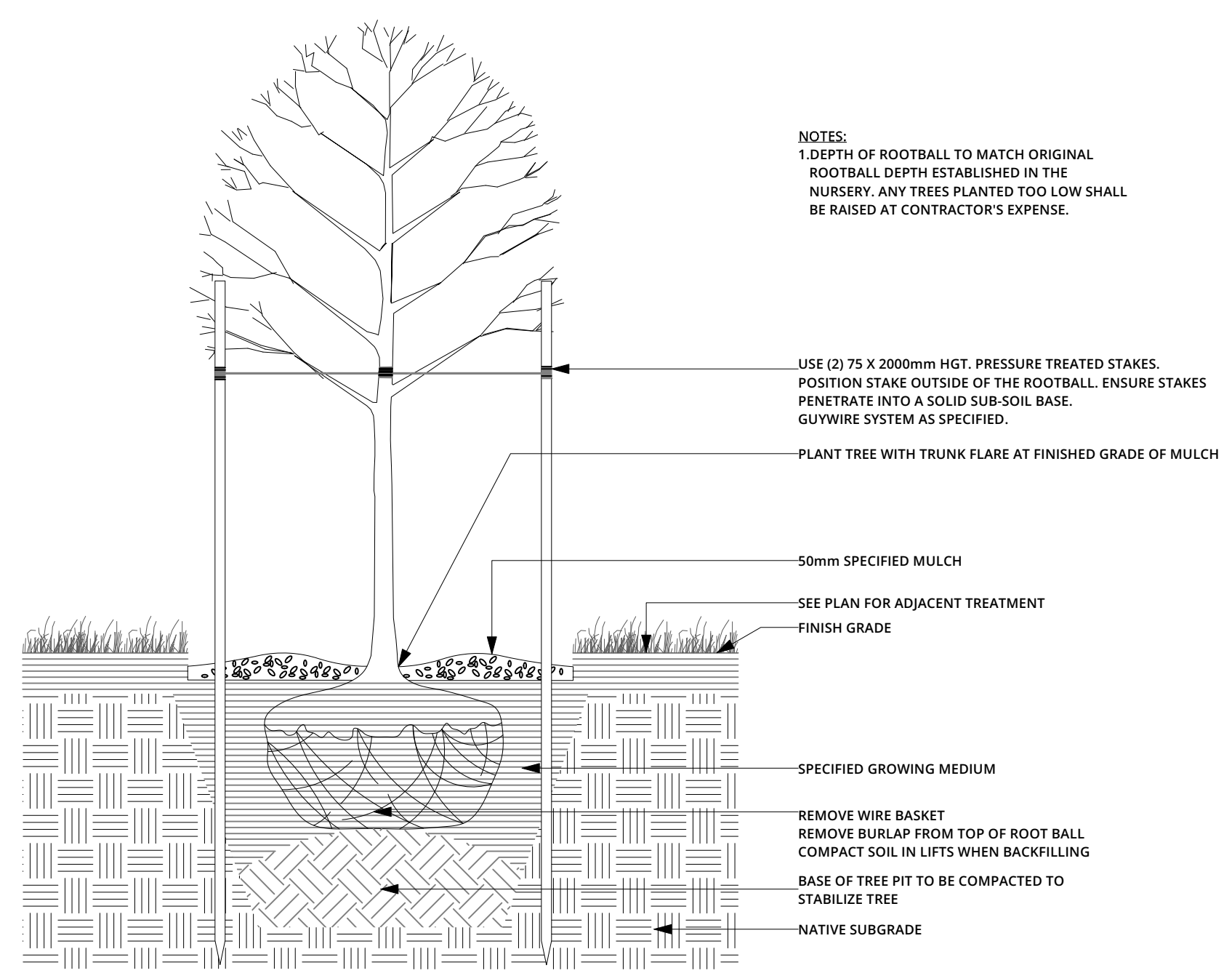
5 TREE PLANTING  
 LDP2.1 NTS

NOTES:  
 1. TREE GRATE TO BE #7268 MARKET STREET CAST IRON 36" x 72". AVAILABLE FROM IRONSMITH, INC 800-3388-4766 OR PRE APPROVED EQUAL.



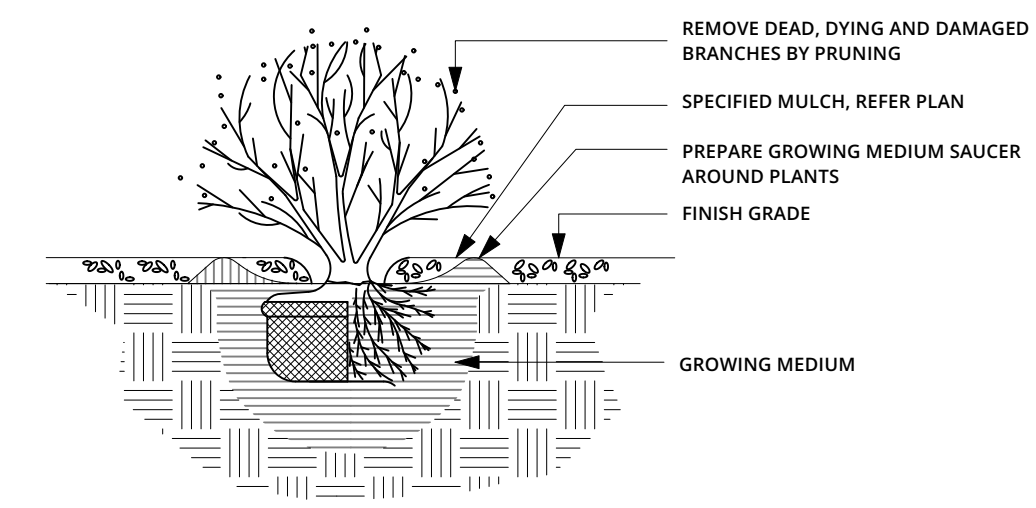
4 TREE GRATE  
 LDP2.1 NTS

NOTES:  
 1. DEPTH OF ROOTBALL TO MATCH ORIGINAL ROOTBALL DEPTH ESTABLISHED IN THE NURSERY. ANY TREES PLANTED TOO LOW SHALL BE RAISED AT CONTRACTOR'S EXPENSE.



- USE (2) 75 X 2000mm HGT. PRESSURE TREATED STAKES. POSITION STAKE OUTSIDE OF THE ROOTBALL. ENSURE STAKES PENETRATE INTO A SOLID SUB-SOIL BASE. GUYWIRE SYSTEM AS SPECIFIED.
- PLANT TREE WITH TRUNK FLARE AT FINISHED GRADE OF MULCH
- 50mm SPECIFIED MULCH
- SEE PLAN FOR ADJACENT TREATMENT
- FINISH GRADE
- SPECIFIED GROWING MEDIUM
- REMOVE WIRE BASKET
- REMOVE BURLAP FROM TOP OF ROOT BALL
- COMPACT SOIL IN LIFTS WHEN BACKFILLING
- BASE OF TREE PIT TO BE COMPACTED TO STABILIZE TREE
- NATIVE SUBGRADE

NOTES:  
 1. REMOVE CONTAINER WITHOUT DISTURBING THE ROOT SYSTEM OF THE PLANT.  
 2. CONTRACTOR TO ALLOW FOR SETTLEMENT WHEN PLANTING.



6 SHRUB PLANTING  
 LDP2.1 NTS

- REMOVE DEAD, DYING AND DAMAGED BRANCHES BY PRUNING
- SPECIFIED MULCH, REFER PLAN
- PREPARE GROWING MEDIUM SAUCER AROUND PLANTS
- FINISH GRADE
- GROWING MEDIUM