



City of  
**Kelowna**

# Bylaw 12704 – Amendment #15 to Solid Waste Regulation Bylaw No. 10106

Utility Services | November 4th, 2024

# Proposed Shared Carts

## Shared Cart Distribution

Residential Dwelling Units	Garbage Carts	Yard Waste Carts	Recyclables Carts
1	one 120L	one 240L	one 240L
2	one 240L	one 240L	two 240L
3	one 360L	one 240L	two 240L
4	two 240L	two 240L	two 360L
5	one 240L and one 360L	two 240L	two 360L
6	two 360L	two 240L	two 360L

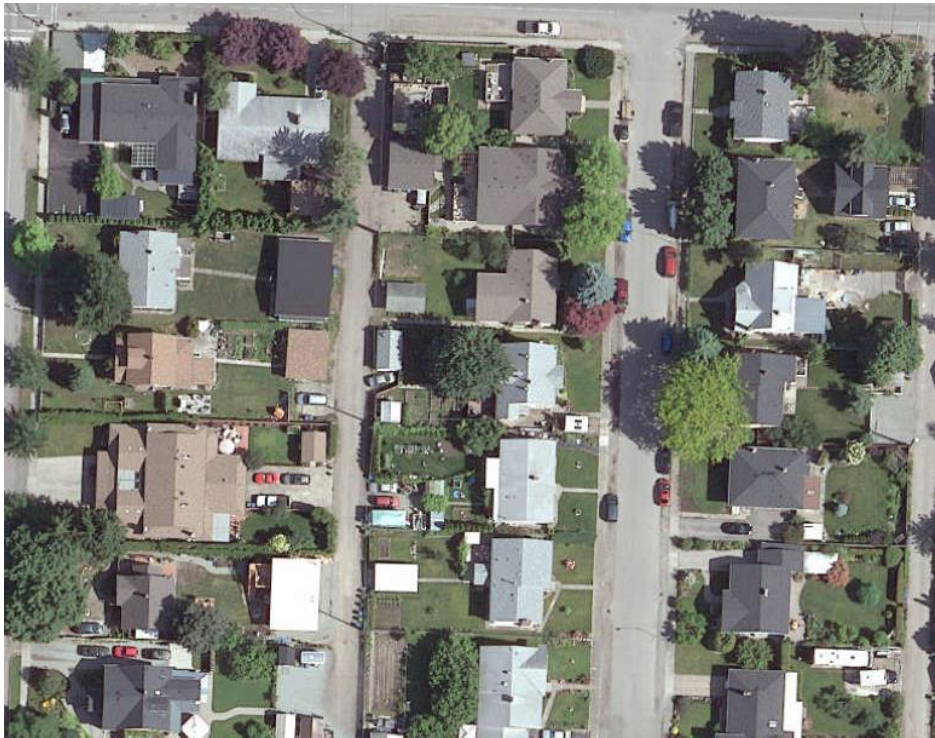
# Infill Housing Shared Carts Benefits

- ▶ Consistent with ability to upsize carts;
- ▶ Lower program costs as fewer carts required;
- ▶ Less storage needed on sites;
- ▶ Improved access in travel lanes;
- ▶ More efficient waste collection as fewer carts; and
- ▶ Expected to meet future need if food waste diversion is implemented.

# Infill Housing Shared Cart Impacts

- ▶ Potential for neighbor conflict;
- ▶ Shared accountability; and
- ▶ Unknown impacts from 2026 transition to RecycleBC providing collection services.

# Infill Housing-Solid Waste Impacts – Yard Waste



2015 aerial photo



2024 aerial photo

# Infill Housing-Solid Waste Impacts – Alleyway Pickup



- ▶ Below
- ▶ Alleyway on collection day



- ▶ Above
- ▶ Alleyway on non collection day

# Infill Housing - Cart Storage



- ▶ Infill housing (RU7)
- ▶ Example of current storage and accessibility issues

# Minor Bylaw Amendments

- ▶ Delete sentence that referenced deleted table
- ▶ Administrative changes to reflect job titles and roles in the bylaw



# Recommendations

## ▶ Next Steps

- ▶ Assist automating internal cart distribution system for shared carts
- ▶ Coordinate shared cart delivery with contractors
- ▶ Develop educational pamphlets for shared carts
- ▶ Work with RDCO Waste Reduction Office for waste sorting education



*Questions?*

For more information, visit [kelowna.ca](http://kelowna.ca).