

Climate Resilient Kelowna Strategy

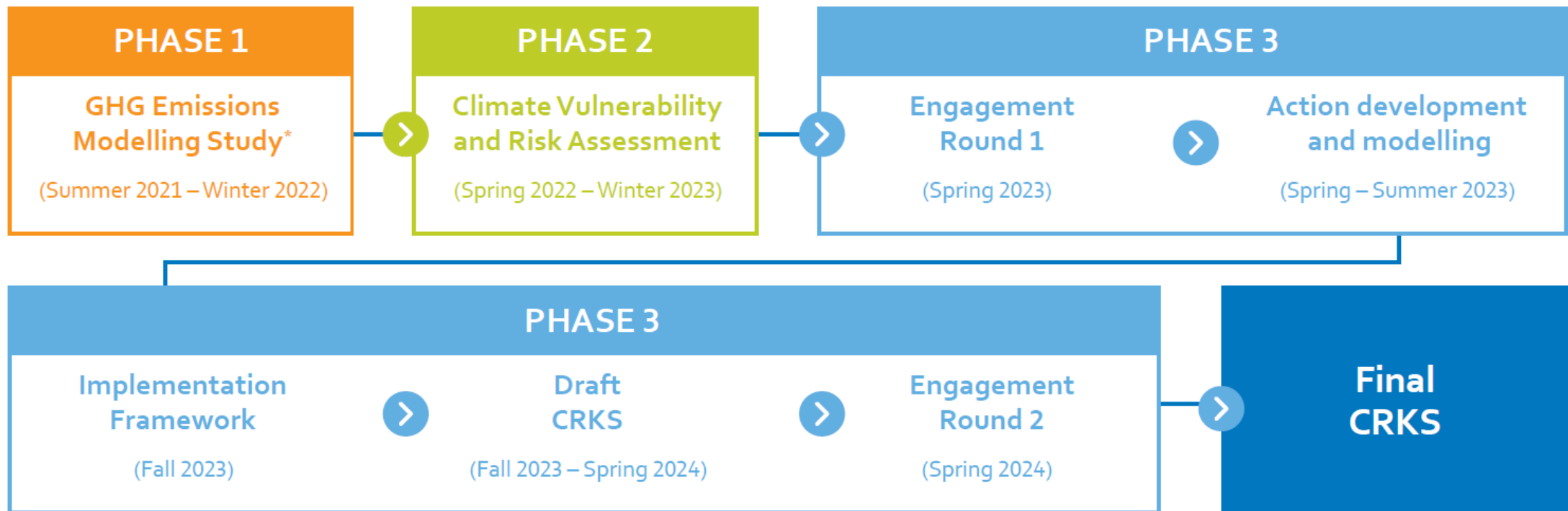
September 23, 2024



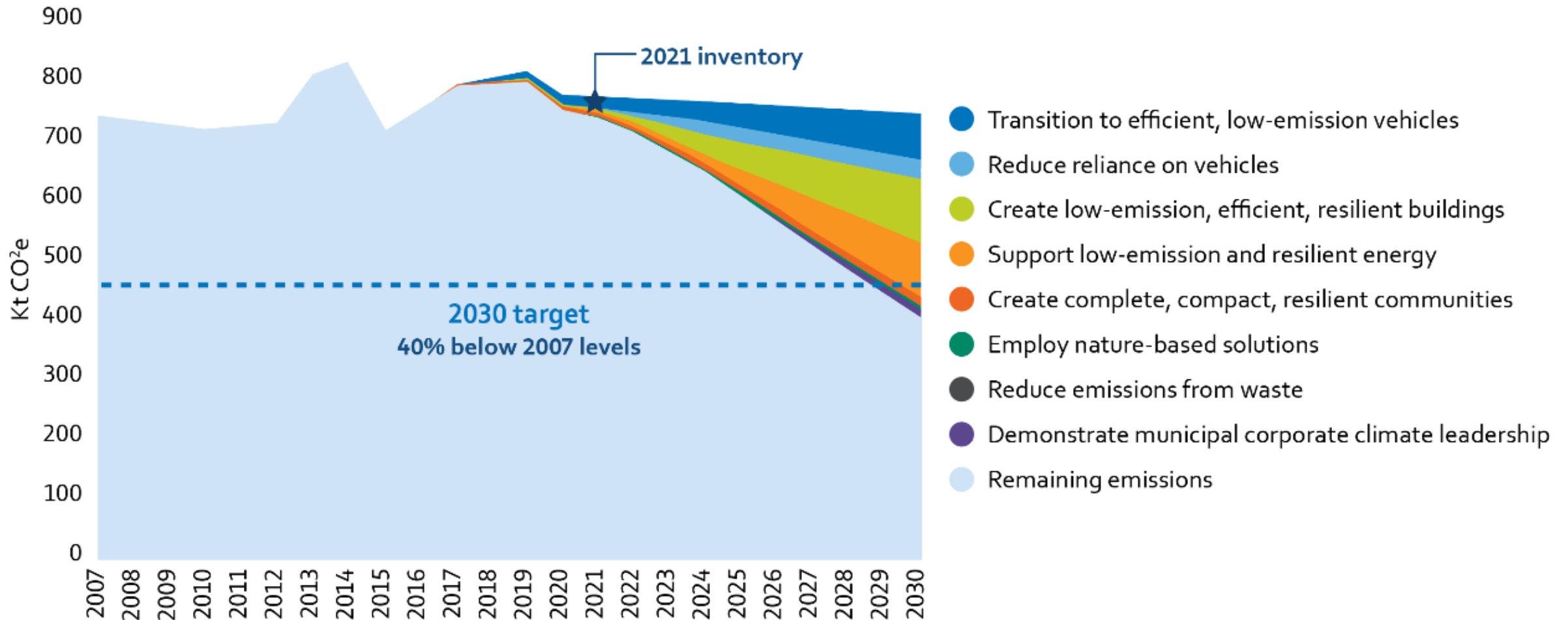


Why a new strategy is needed

Developing of the Strategy



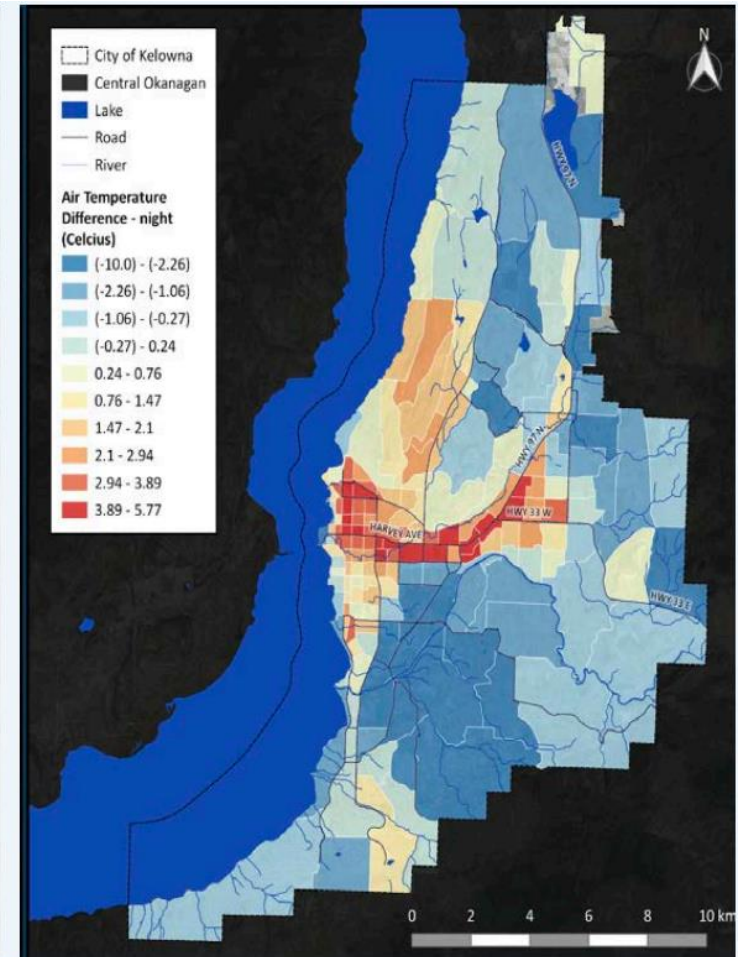
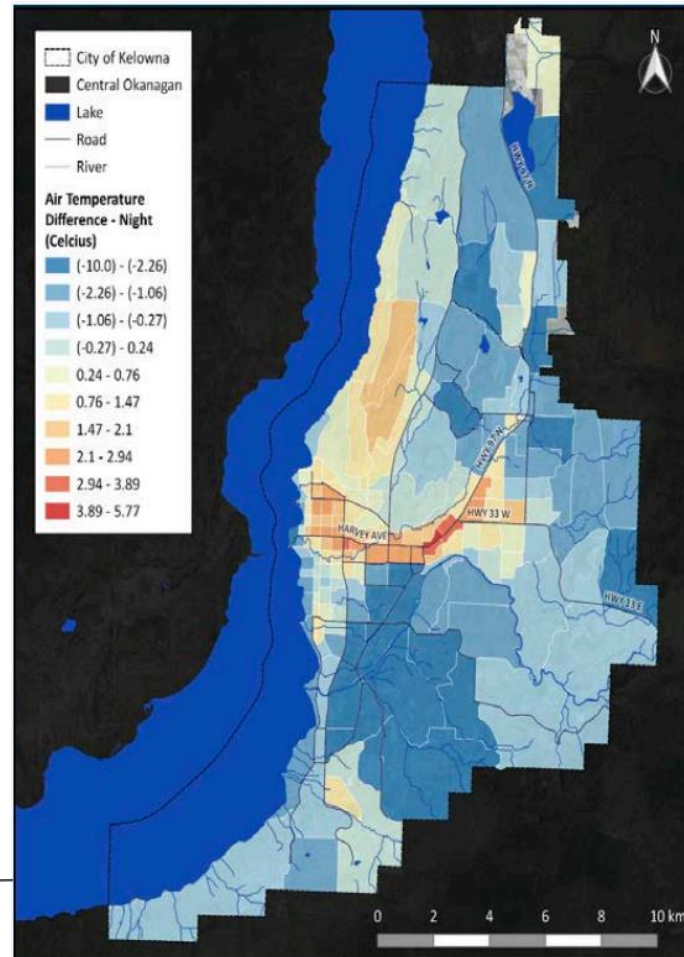
Phase 1: GHG Emissions Modelling



Phase 2: Climate Vulnerability and Risk

- What climate hazards do we experience in Kelowna, how are those hazards expected to change, and what are the risks and vulnerabilities?
- What interventions could help reduce risks and vulnerabilities?

Example: Extreme Heat
2021 vs 2070



Phase 3: Engagement

9,743

engagement site visits

131

open house
participants

599

survey submissions

22

youth participated in
the Youth Working
Group

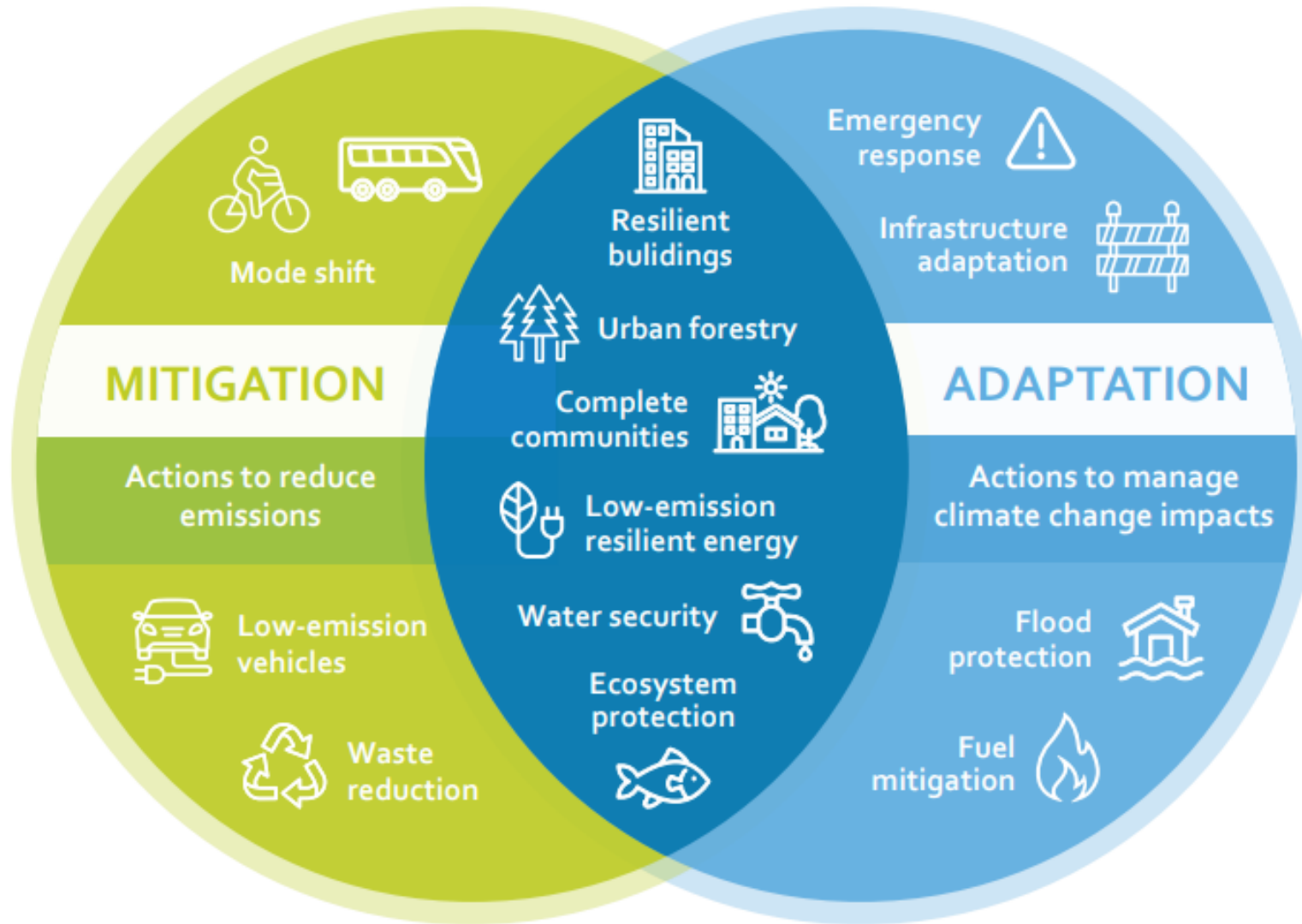
6

equity seeking focus
group participants

16

organizations
participated in the
Working Group

A Low-Emission Resilience Approach



The CRKS Action Plan



Where the biggest
impact can be made



The changes
needed to achieve
the drivers




Policy, programs or
initiatives to achieve
the strategies


10 Key Drivers




Reduce reliance on vehicles



Transition to efficient, low-carbon vehicles



Create low carbon, efficient, resilient buildings



Support low-carbon and resilient energy supply



Create complete, compact, resilient communities



Employ nature-based solutions



Reduce emissions from waste



Increase the resiliency of infrastructure and assets



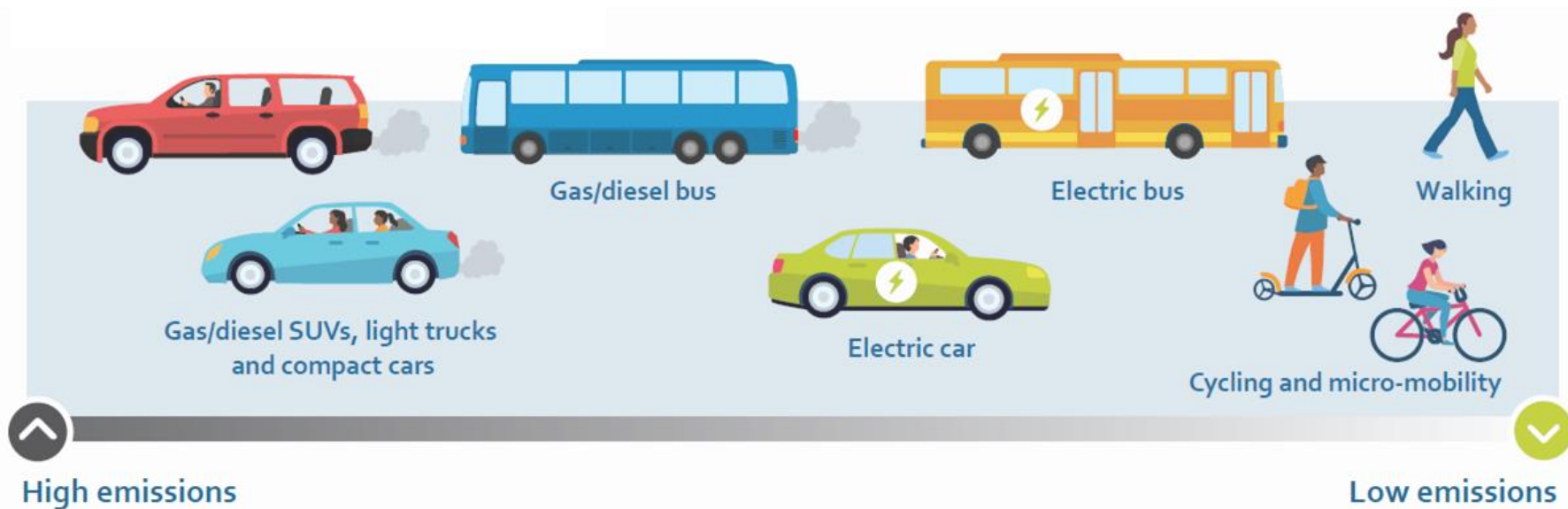
Improve climate emergency preparedness








Demonstrate municipal corporate climate leadership

Emissions Reduction Driver: Transportation

2030 Emissions Reduction Impact	Climate Hazards Addressed	Co-benefits
33%	 Air Quality	<ul style="list-style-type: none"> Improved health Improved livability Energy and fuel savings

















Emissions Reduction Driver: Buildings

<p>2030 Emissions Reduction Impact</p>	<p>32%</p>
<p>Climate Hazards Addressed</p>	<div style="display: flex; align-items: flex-start; gap: 10px;"> <div style="display: flex; flex-direction: column; gap: 10px;">      </div> <div style="display: flex; flex-direction: column; gap: 10px;"> <p>Extreme Heat</p> <p>Extreme Cold</p> <p>Flooding</p> <p>Wildfires</p> <p>Air Quality</p> </div> </div>
<p>Co-benefits</p>	<ul style="list-style-type: none"> • Improved health • Improved livability • New jobs



The Remaining Key Drivers

Key Driver	2030 Emissions Reduction Impact	Climate Hazards Addressed	Co-benefits
 Energy	35%	 Extreme Heat  Extreme Cold  Flooding  Wildfires  Air Quality  Landslides  Invasive Species	<ul style="list-style-type: none"> • Improved livability • Improved health • Energy and fuel savings • Resilient energy • More trees and greenspace • New jobs
 Complete, compact, resilient communities			
 Nature-based solutions			
 Waste			
 Corporate climate leadership			
 Resilient infrastructure	NA		
 Emergency preparedness			

Initial Actions



- Hardy St. Transit Facility Refurbishment
- Implement biking projects: Bertram Street and Rutland Neighbourhood Bikeways
- Income qualified E-bike incentive program



- Expand the Public Level 2 charging network



- Expand the Home Energy Coordinator program
- Continue to offer incentives for low-emission building technologies (e.g., heat pumps)
- Develop a 'higher steps' Energy Step Code and/or Zero Carbon Step Code strategy



- Expand the application of a climate lens for development applications



- Implement the priority actions of the Sustainable Urban Forest Strategy



- Finalize a High-Performance Building Policy for new City facilities

Recommendation

THAT Council receives the 2024 Climate Resilient Kelowna Strategy;

AND THAT Council adopt the 2024 Climate Resilient Kelowna Strategy.



Questions?

For more information, visit kelowna.ca.