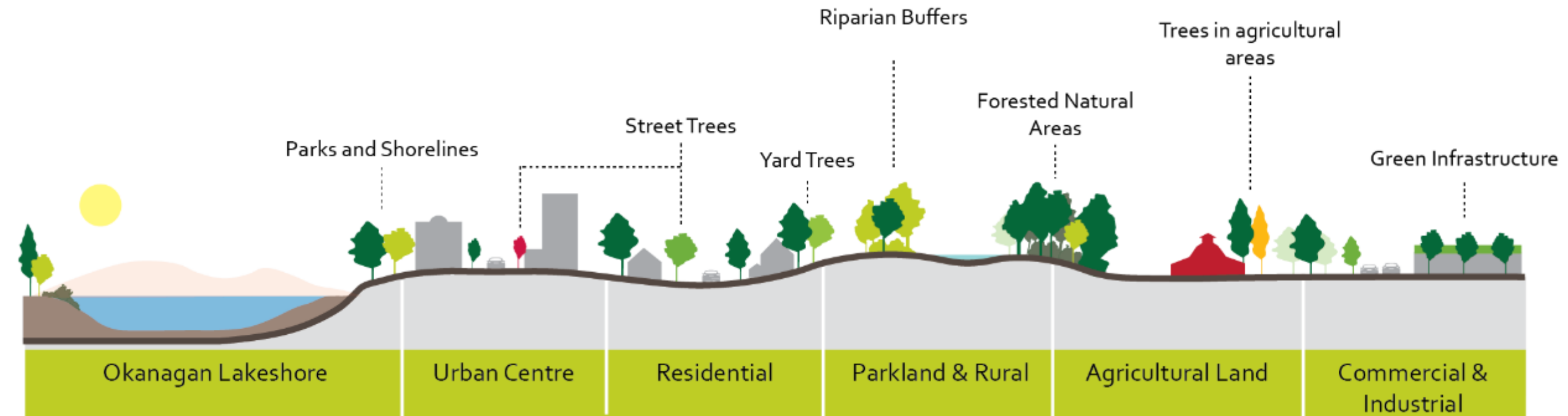


Sustainable Urban Forest Strategy

August 26, 2024

What is the urban forest?

"All trees, forests, plants, soils, and associated ecosystem components located within the city."



Includes rural and urban, public & private

City forest



Private forest



Natural Forests

City tree



Private tree



Urban Trees

Trees face many challenges



Pests, diseases & invasives



Climate change and extreme weather



Development and urbanization



.... but provide many benefits



Shade and cooling



Beautification & sense of place



Food production & health



Habitat, air purification & water storage

Development of the Sustainable Urban Forest Strategy



Engagement – who we heard from

Phase 1 (Fall 2022)

- 347 survey respondents
- 48 mapping tool participants
- 22 open house attendees
- 25 workshop participants

Phase 2 (Spring 2024)

- 350 survey respondents
- 68 open house attendees

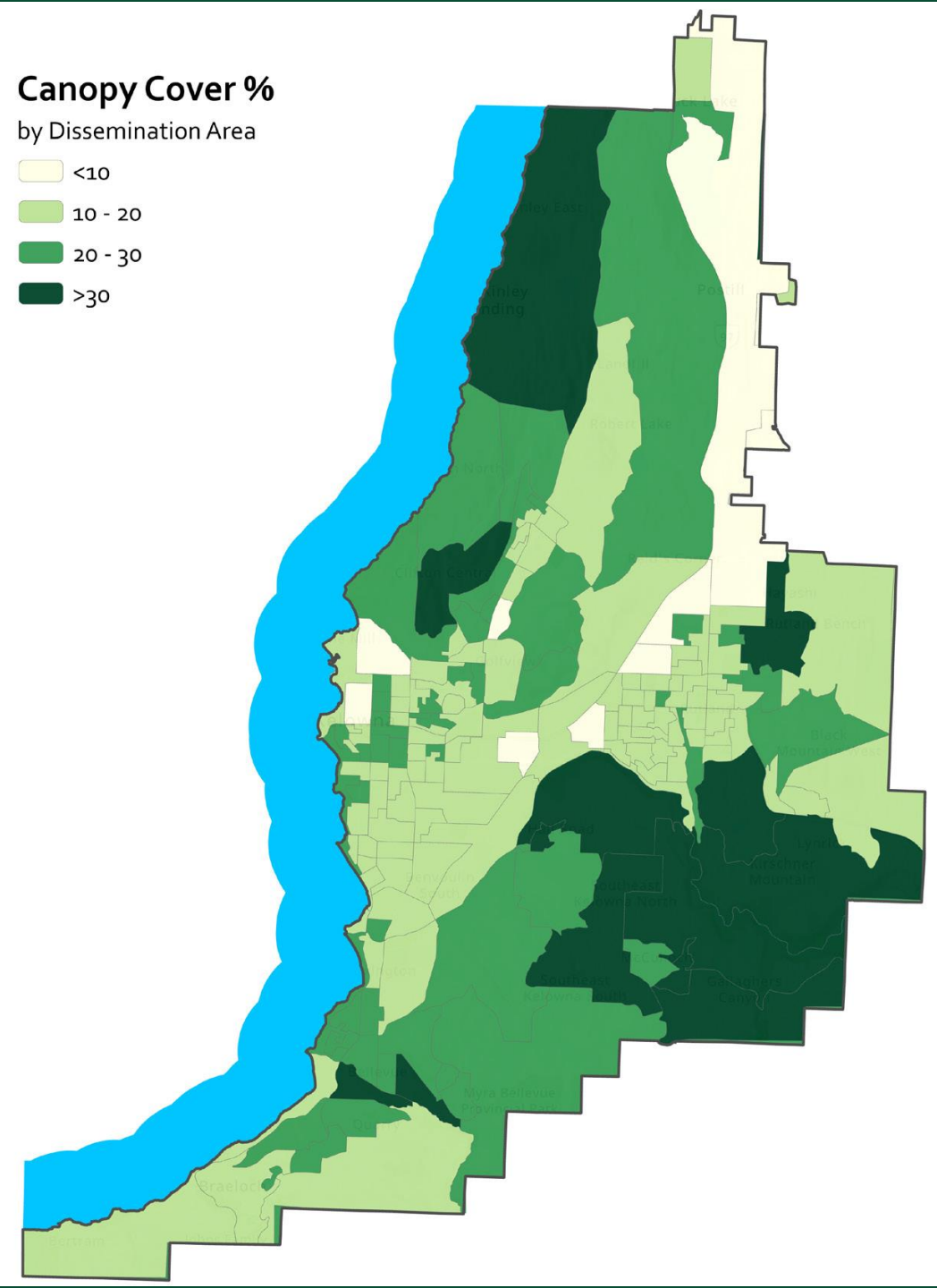
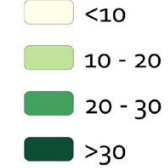


2023 Canopy Coverage Analysis

- ▶ **22%** canopy coverage average city-wide
 - ▶ Grassland cities average 20%-25%
- ▶ Tree Canopy Distribution
 - ▶ **78%** on private lands
 - ▶ **22%** on public lands
 - ▶ 15% managed by the City
 - ▶ 7% occurs on other public lands (schools, RDCO parks, etc.)

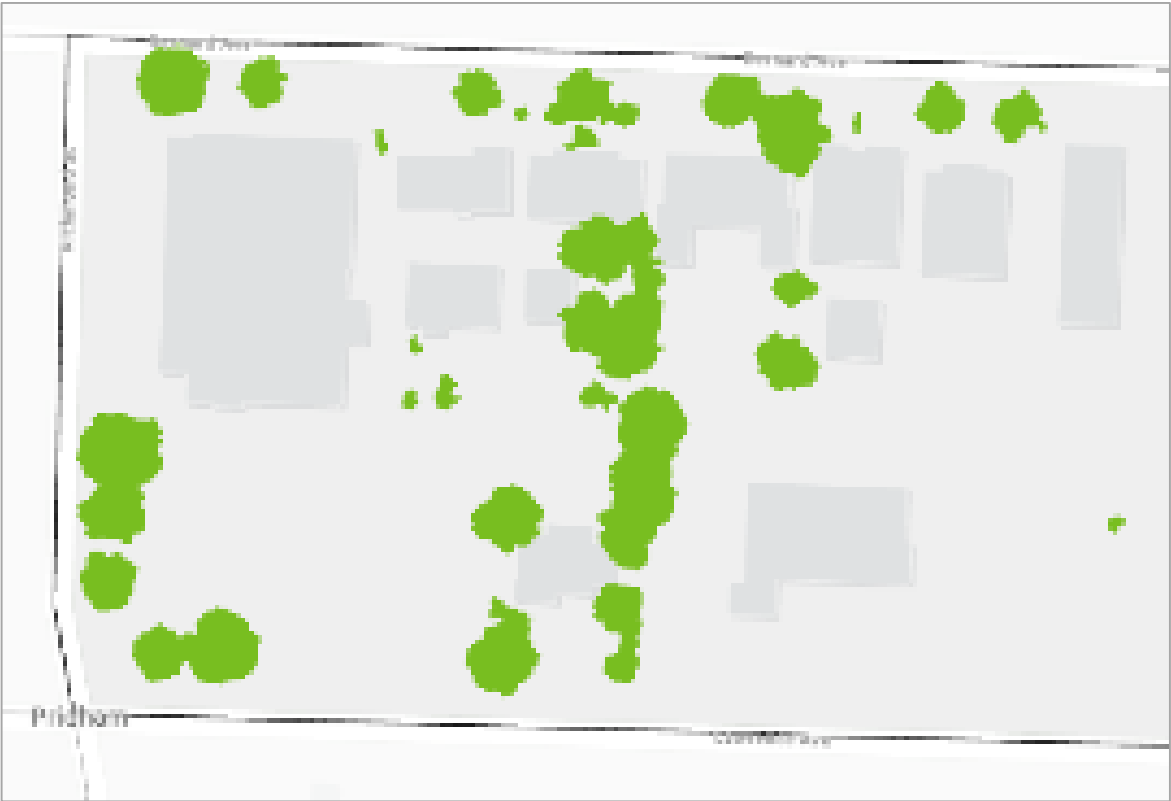
Canopy Cover %

by Dissemination Area



Canopy Coverage Examples

10%



Canopy Coverage Examples

20%

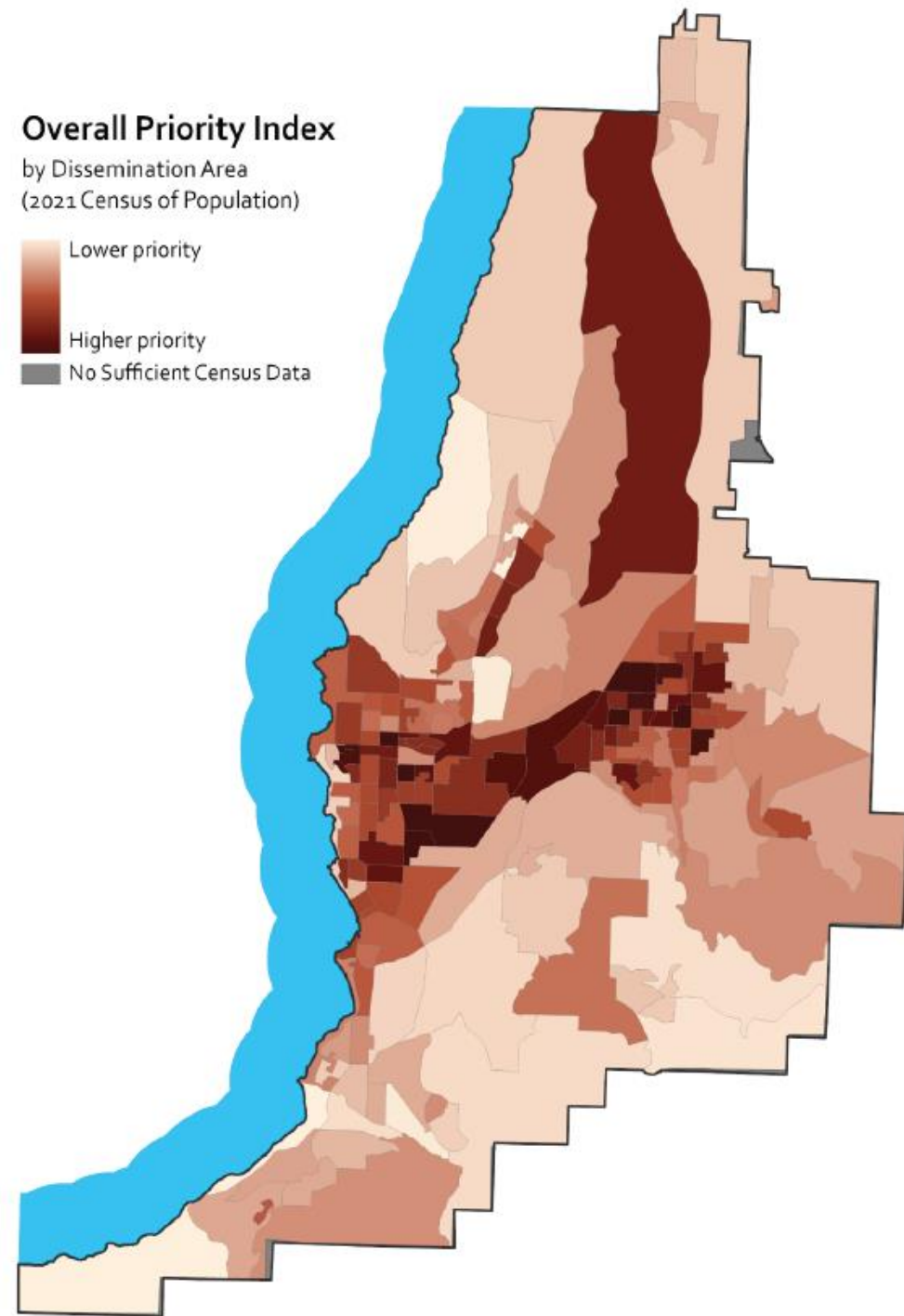
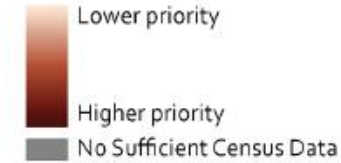


Tree Equity

- ▶ Equitable access to urban forest benefits is a crucial social issue
- ▶ Assessed by combining tree canopy coverage with social indicators including:
 - ▶ Temperature
 - ▶ Income
 - ▶ Unemployment
 - ▶ Age
 - ▶ Visible minorities
- ▶ Illustrates the need for additional planting in Urban Centres and Core Area

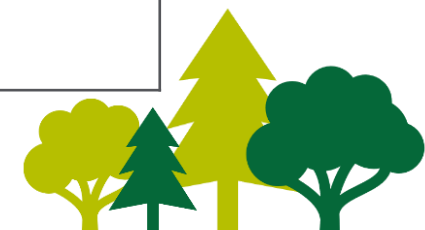
Overall Priority Index

by Dissemination Area
(2021 Census of Population)

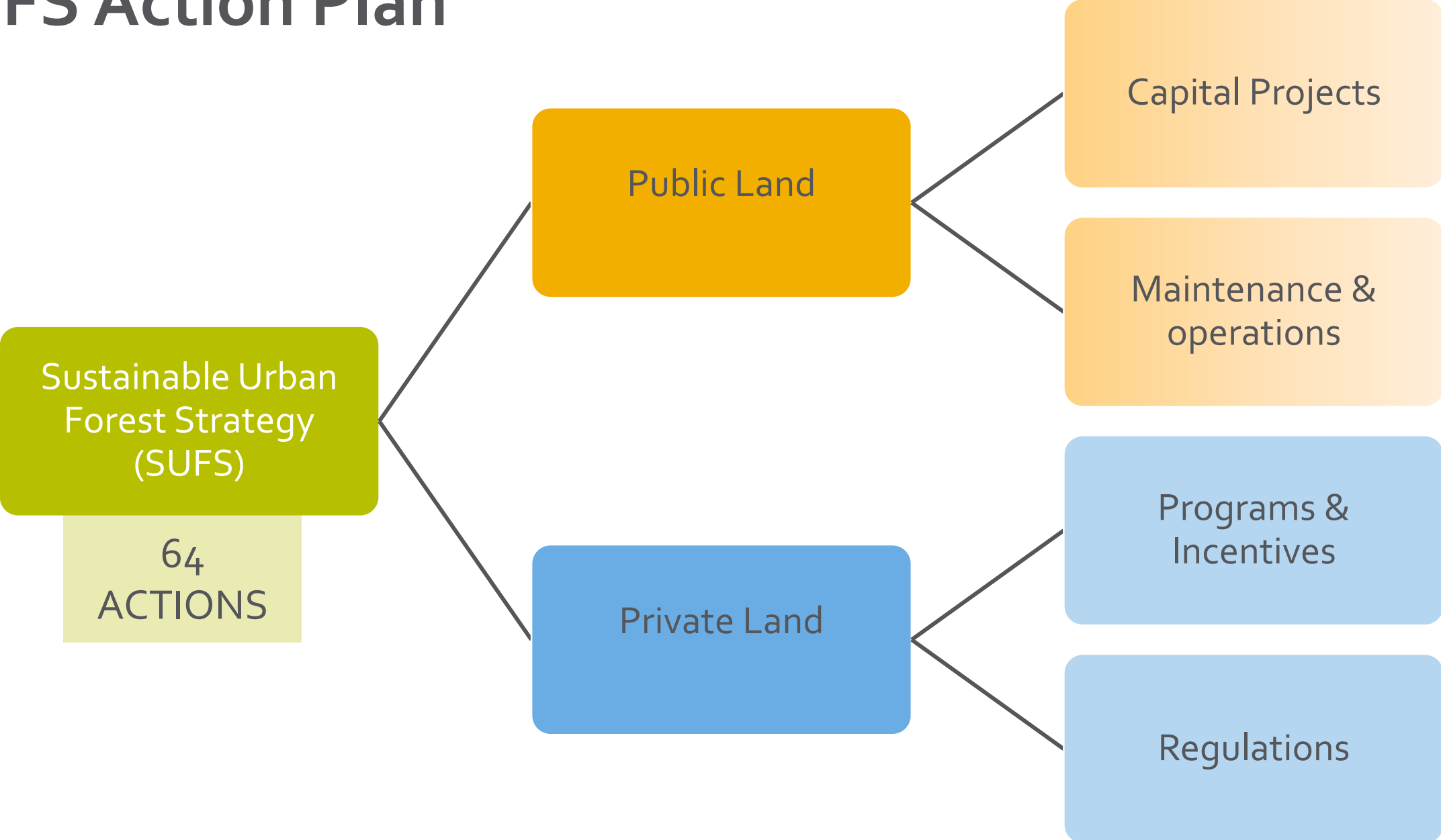


Proposed Canopy Targets

Growth Strategy District	2023 Canopy Coverage	Current Target 2040	Proposed New Targets 2050
Urban Centres	12%	12%	20%
Core Area	15%	20%	20%
Suburban	20%	25% (average over the three districts)	25%
Gateway	10%		15%
Rural	27%		25%



SUFS Action Plan



10 Key Strategies to Success

Protect, connect, and expand the urban forest

1. Strengthen policy, planning, and implementation to protect, connect and expand tree canopy
2. Expand the urban forest equitably in Urban and Core areas
3. Improve the quality and suitability of trees being planted for the site and climate requirements



Maintain a healthy, safe, and viable urban forest

4. Clarify City procedures and standards to improve efficiency and manage risk
5. Transition from reactive to proactive maintenance of City trees
6. Ensure resourcing is sufficient to deliver levels of service that maximize urban forest benefits



10 Key Strategies to Success con't

Involve people and organizations in management

7. Improve awareness of and participation in urban forest management
8. Build relationships with syilx/Okanagan communities, First Nations Governments and Indigenous peoples through urban forest management

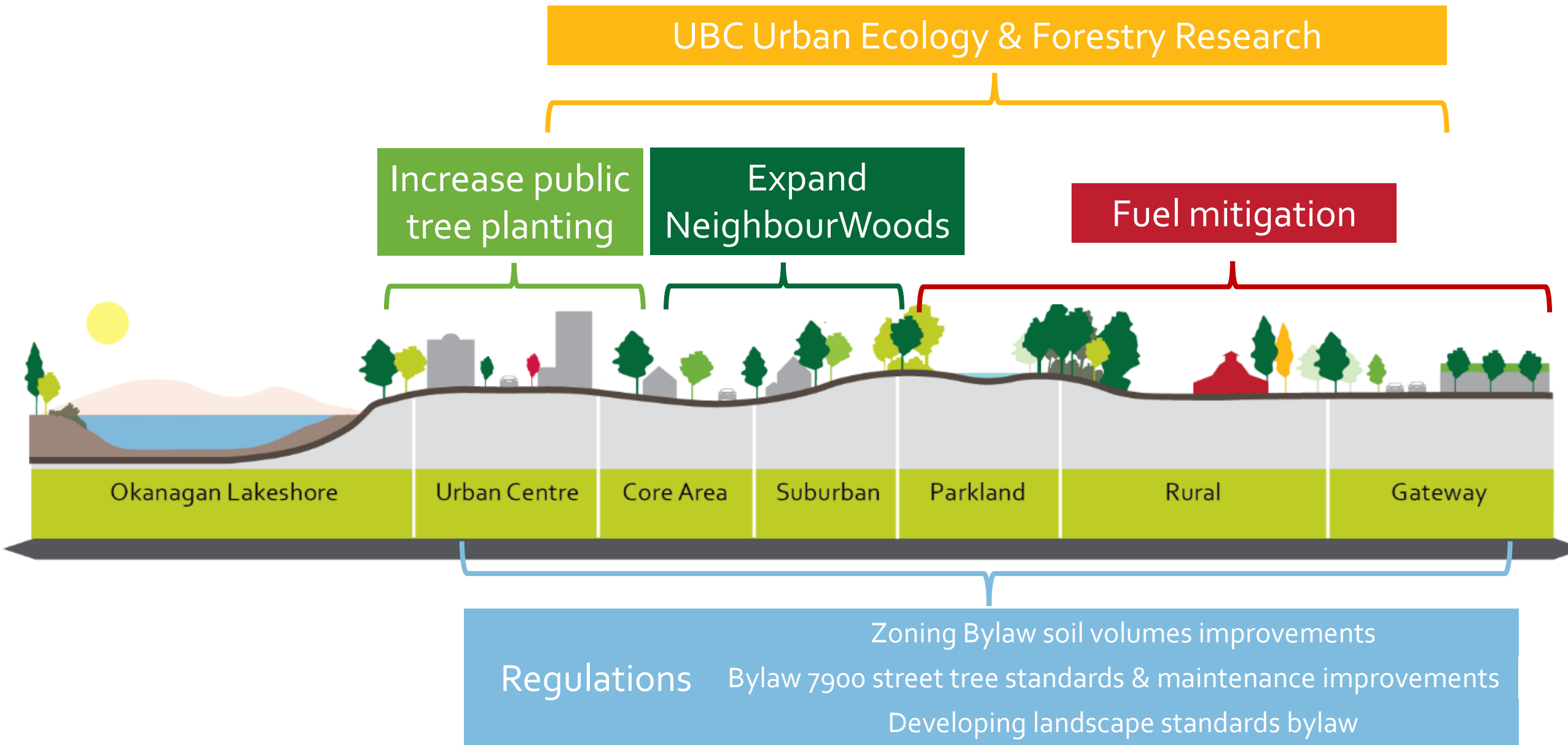


Monitor and innovate to achieve vision

4. Monitor change, report, and adapt management to new information
5. Trial innovative approaches to dryland urban forestry



Initial Actions

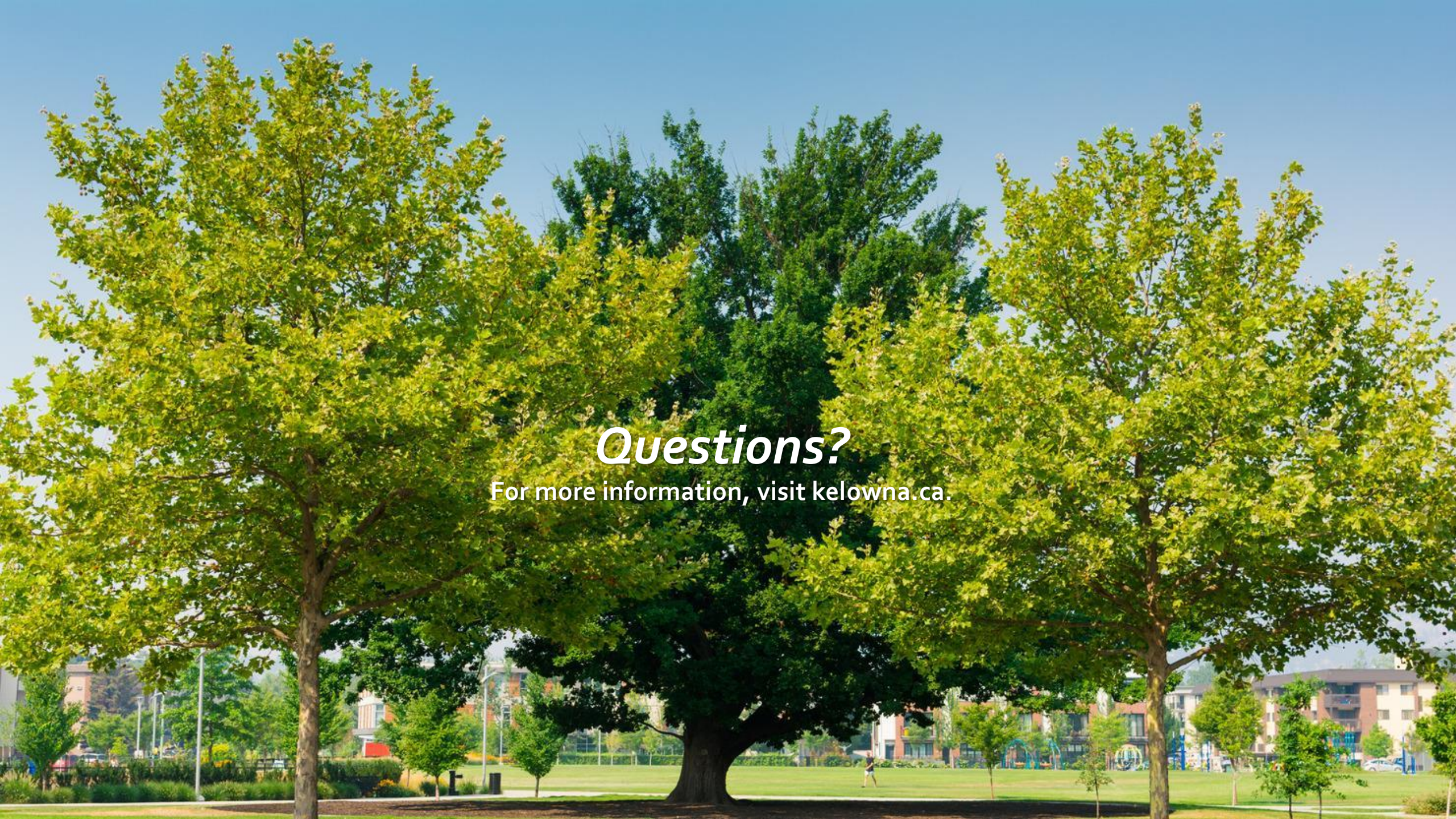


Recommendation

THAT Council receives the 2024 Sustainable Urban Forest Strategy.

AND THAT Council adopt the 2024 Sustainable Urban Forest Strategy.





Questions?

For more information, visit kelowna.ca.