

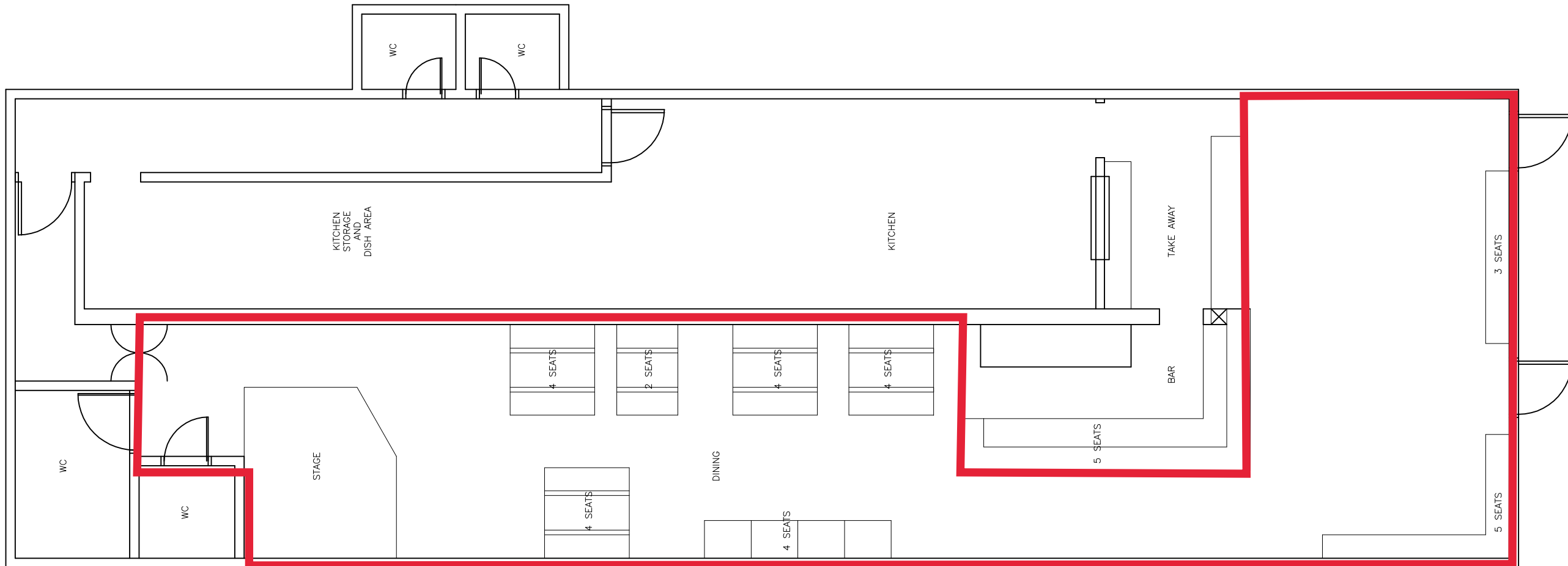
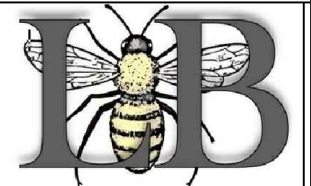
**ATTACHMENT A**

This forms part of application  
# LL24-0004

Planner Initials **SS**



**DUNNENZIES  
DOWNTOWN**  
1559 Ellis Street  
Kelowna BC V1Y 2A7



- 1. SERVICES SHALL BE CONCEALED IN WALLS, CEILING, AND FLOORS.
- 2. CONTROL BOXES AND WIRING TO BE FLUSHED MOUNTED AND CONCEALED IN WALLS.
- 3. ALL SUB-TRADES WILL REVIEW DRAWINGS AND SPECIFICATIONS, TO VERIFY ROUGH-IN DATA, PRIOR TO COMMENCING WORK.
- 4. A MINIMUM CLEAR OPENING OF 3'-0" X 7'-0" IS REQUIRED FOR ENTRY OF EQUIPMENT, UNLESS OTHERWISE NOTED.
- 5. FLOOR PANS, DEPRESSIONS, GROUT AND INSTALLATION BY GENERAL CONTRACTOR IN CONJUNCTION WITH FES.
- 6. FINAL DUCT CONNECTION AND AIR BALANCING BY OTHERS UNLESS OTHERWISE NOTED.
- 7. EXHAUST SYSTEMS TO CONFORM TO NFPA96 AND LOCAL CODES.
- 8. CONSULT H.V.A.C. ENGINEER FOR MAKE-UP AIR REQUIREMENTS.

**SITE VERIFY ALL DIMENSIONS**

<b>DRAWING TITLE: BUILDING LAYOUT</b>		
NO.	DATE	REVISION
DATE ISSUED: 05-10-24		
DRAWN BY: LB		
SCALE: N.T.S.		
DRAWING NUMBER:		

**LAYOUT**