

EXPLANATORY PLAN TO ACCOMPANY BYLAW NUMBER ####, 2023 (CITY OF KELOWNA) TO CLOSE PART OF ROAD DEDICATED ON PLAN 39798, SEC 25, TP 28, SDYD.

PLAN EPP131748

DRAFT

PURSUANT TO SECTION 120 OF THE LAND TITLE ACT AND SECTION 40 OF THE COMMUNITY CHARTER BCGS 82E.083 SCALE 1:500 METRIC

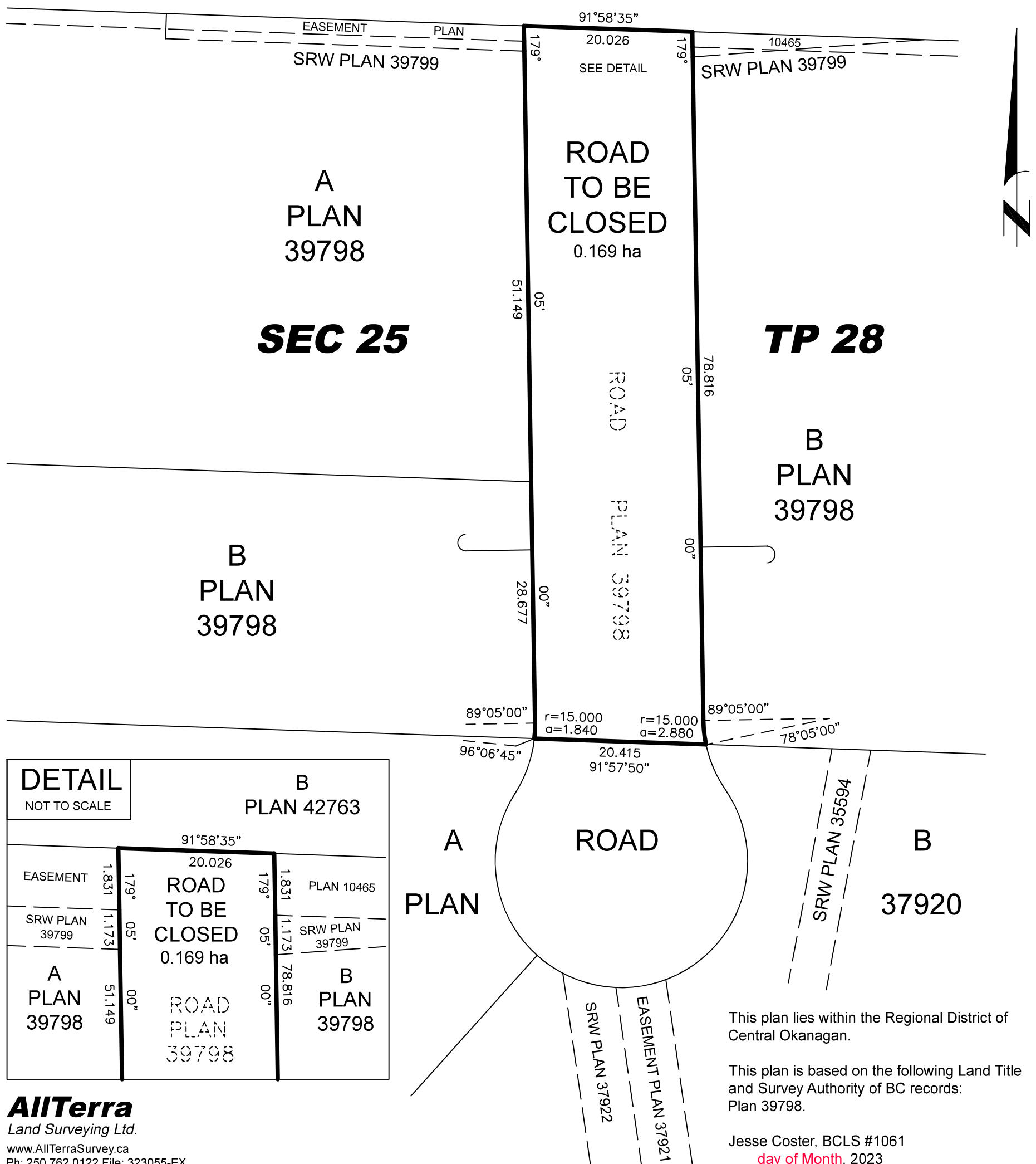


The intended plot size of this plan is 280mm in width by 432mm in height (B-size) when plotted at a scale of 1:500 METRIC.

This plan lies within Integrated Survey Area No. 4, City of Kelowna, NAD83(CSRs) 4.0.0.BC.1.

Bearings are grid derived from Plan 39798.

Distances are horizontal ground level distances unless otherwise noted.



DETAIL		B PLAN 42763	
NOT TO SCALE			
EASEMENT	1.831	20.026	PLAN 10465
SRW PLAN 39799	1.173	ROAD TO BE CLOSED	SRW PLAN 39799
A PLAN 39798	51.149	0.169 ha	B PLAN 39798
		ROAD PLAN 39798	