

SCHEDULE E

This forms part of application # HRA22-0001

Planner Initials BC



BOULDERS + ROCK MULCH (BOULDERS TO BE RETRIEVED ON-SITE + LOCATED AS PER LANDSCAPE DRAWING)

PROPOSED PHASE 1 CONDENSER UNIT ON CONCRETE PAD + WOODEN FENCE SCREEN

EXISTING GARGO TREE (TO REMAIN)

SPEED BUMP (CONCRETE PAVEMENT) WHEEL STOP RAIN CHAIN LOCATIONS (2)

VEHICULAR SITE ENTRY / EXIT SITE SIGNAGE (PHASE 2 SCOPE)

PROPOSED TRANSFORMER ON CONCRETE PAD JAPANESE TREE LILAC BICYCLE RACK (2) / RACK

BACKED BENCH ELEVATED PEDESTRIAN CROSSWALK (CONCRETE PAVEMENT) PEDESTRIAN ACCESS (CONCRETE PAVEMENT)

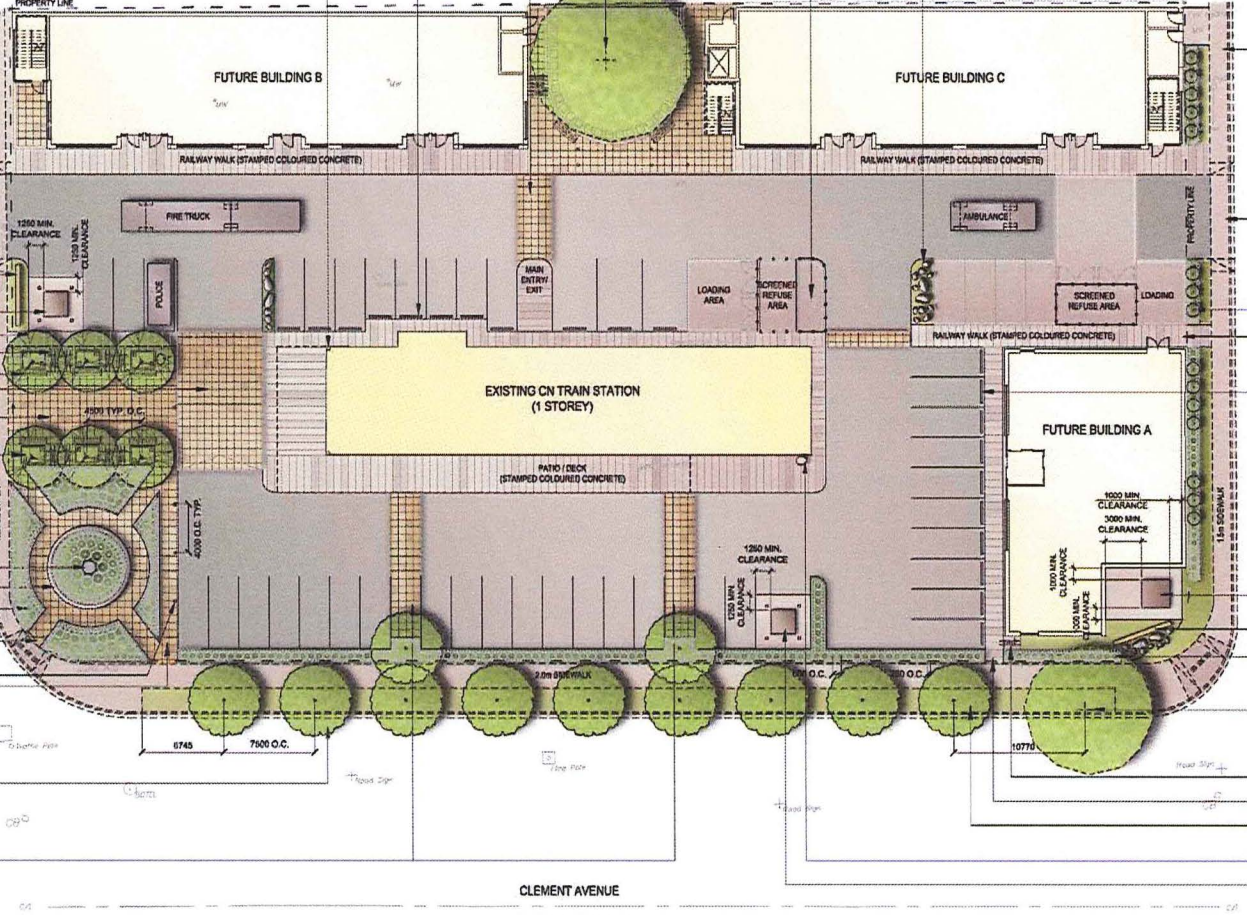
TREE GRATE (1225 X 1825) AT TREE TRENCH + UPPLANTS

SCULPTURAL ELEMENT (SCULPTURE: TENGCKED SEPARATELY) CONCRETE BENCH/PLANTER WALL HERITAGE GARDEN

CONCRETE PAVEMENT PATHWAY (1.5M) + CONCRETE EDGE (180MM) BOLLARD PEDESTRIAN ACCESS

THORNLESS HONEYLOCUST BOULEVARD TREES

SPEED BUMP (CONCRETE PAVEMENT)



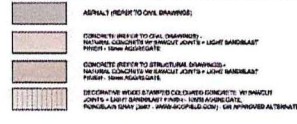
GENERAL NOTES

- All plant material shall meet the standards of the Canadian Nursery Trade Association and be true to type and species. All plant material shall be locally grown in British Columbia.

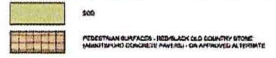
SITE FURNISHINGS



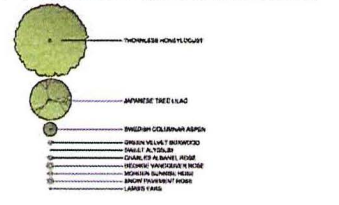
SURFACING LEGEND



SURFACING LEGEND (continued)



PLANTING LEGEND



Revision table with columns for revision number, date, description, and reviewer.



Project Stamp

Project description: KELLOWNA HERITAGE TRAIN STATION PHASE 2-A

Drawing title: LANDSCAPE RENDERING

Project details including drawing issued date (2010-02-12), project number (9636), and drawing number (L-2).

# SCHEDULE

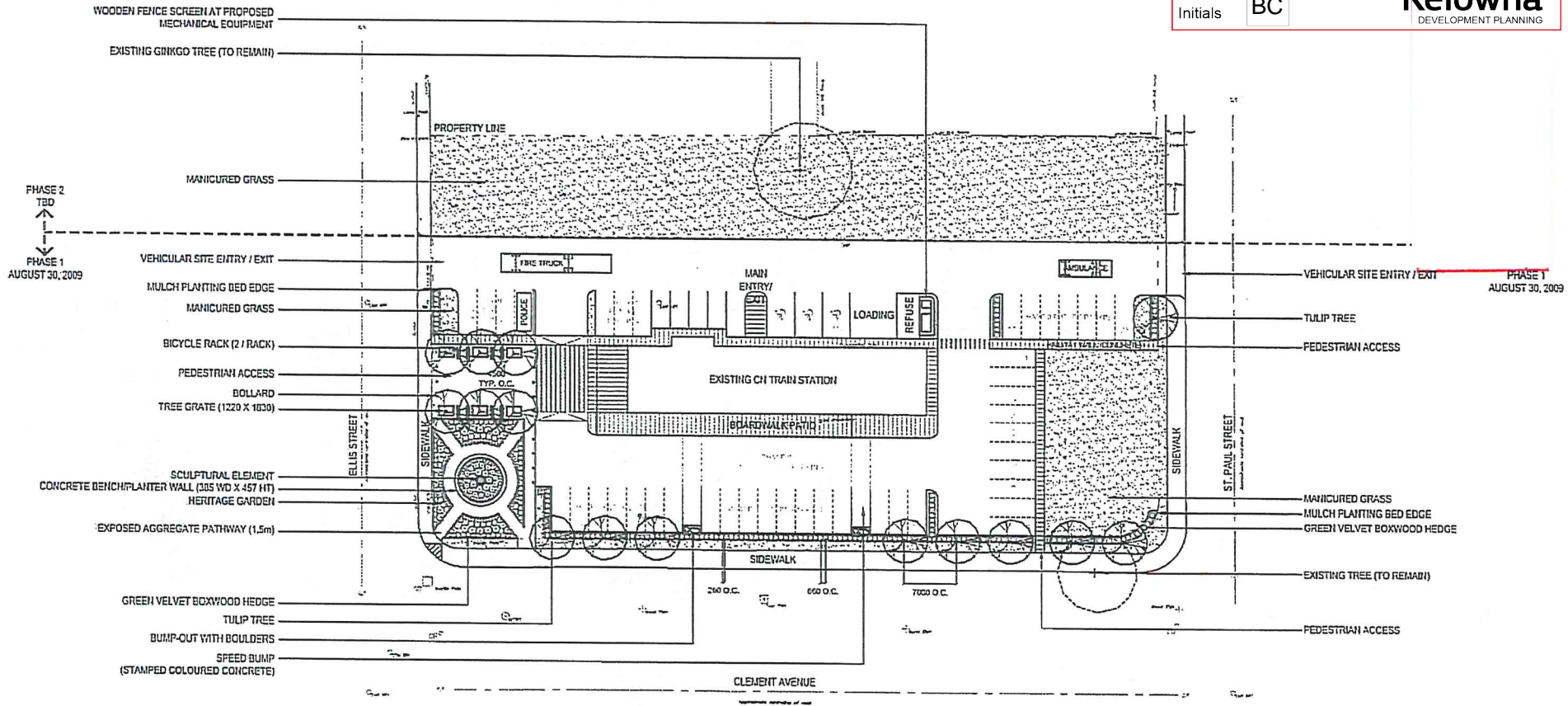
E

This forms part of application  
# HRA22-0001



City of  
**Kelowna**  
DEVELOPMENT PLANNING

Planner  
Initials **BC**



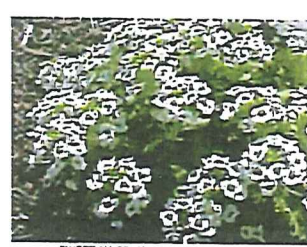
	PROJECT	KELOWNA HERITAGE TRAIN STATION - PHASE 1	ISSUED FOR: <b>HERITAGE ALTERATION PERMIT SUBMISSION</b>	PROJECT NO.	C396	DEC REF	N/A	
	DWG TITLE	LANDSCAPE CONCEPT		ISSUE DATE	11/13/2009	DWG NO.	L1	
			SCALE	1:500	DRAWN	MCO	REVIEW	—



1  
L2  
NTS  
GREEN VELVET BOXWOOD  
(Buxus 'Green Velvet')



2  
L2  
NTS  
TULIP TREE  
(Liliodendron tulipifera)



3  
L2  
NTS  
SWEET ALYSSUM  
(Lobularia maritima)



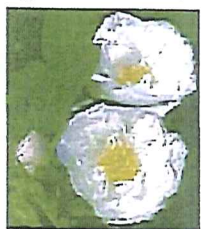
4  
L2  
NTS  
CHARLES ALBANDEL ROSE  
(Rosa 'Charles Albanel')



5  
L2  
NTS  
GEORGE VANCOUVER ROSE  
(Rosa 'George Vancouver')



6  
L2  
NTS  
MORDEN SUNRISE ROSE  
(Rosa 'Morden Sunrise')



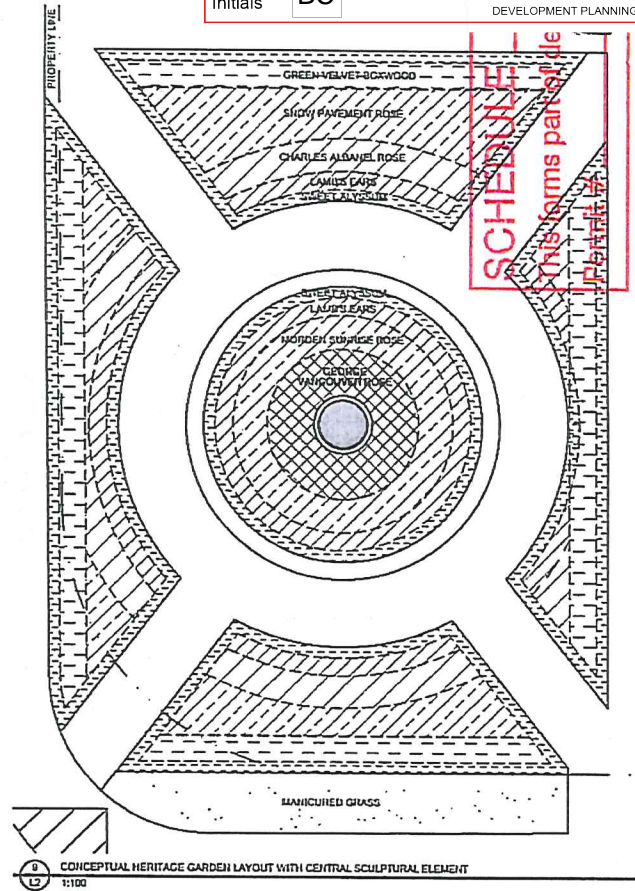
7  
L2  
NTS  
SHOW PAVEMENT ROSE  
(Rosa 'Schneekoppe')



8  
L2  
NTS  
LAMB'S EARS  
(Stachys byzantina)

**PLANT LIST**

Key	Scientific Name	Common Name	Planting Size	Mature Size, Approx.	Qty.
11	Liliodendron tulipifera	Tulip Tree	30cm CAL, 8.0m, 100cm WD & 600mm Depth Root Ball	24 HT x 8cm WD	13
<b>Deciduous Shrubs</b>					
16	Rosa 'Green Velvet'	Green Velvet Boxwood	Min. 300x300mm HL, Min. 4 major branch stems, Plant Spread 250mm, + 60 mm	1.25 HT x 1.00m WD	228
17	Lobularia maritima	Sweet Alyssum (White - varietal)	Min. 12cm	250-300mm HT	1,341
18	Rosa 'Charles Albanel'	Charles Albanel Rose	Min. 400x300mm HL, Min. 4 major branch stems, Plant Spread 250mm, + 60 mm	8.00 HT x 8.00m WD	28
19	Rosa 'George Vancouver'	George Vancouver Rose	Min. 400x300mm HL, Min. 4 major branch stems, Plant Spread 250mm, + 60 mm	8.00 HT x 1.20m WD	24
20	Rosa 'Morden Sunrise'	Morden Sunrise Rose	Min. 400x300mm HL, Min. 4 major branch stems, Plant Spread 250mm, + 60 mm	7.50 HT x 7.00m WD	15
21	Rosa 'Schneekoppe'	Show Pavement Rose	Min. 400x300mm HL, Min. 4 major branch stems, Plant Spread 250mm, + 60 mm	1.00 HT x 1.00m WD	7
22	Stachys byzantina	Lamb's Ears	Min. 12cm	300mm HT	84



	PROJECT	KELOWNA HERITAGE TRAIN STATION - PHASE 1	ISSUED FOR	HERITAGE ALTERATION PERMIT SUBMISSION	PROJECT NO.	C396	DRG REF	N/A
	DRG TITLE	HERITAGE GARDEN			ISSUE DATE	11/13/2009	SCALE	NTS
					DRAWN	MCO	DRG NO.	L2
					REVIEW			

