

MULTI-FAMILY RESIDENTIAL DEVELOPMENT

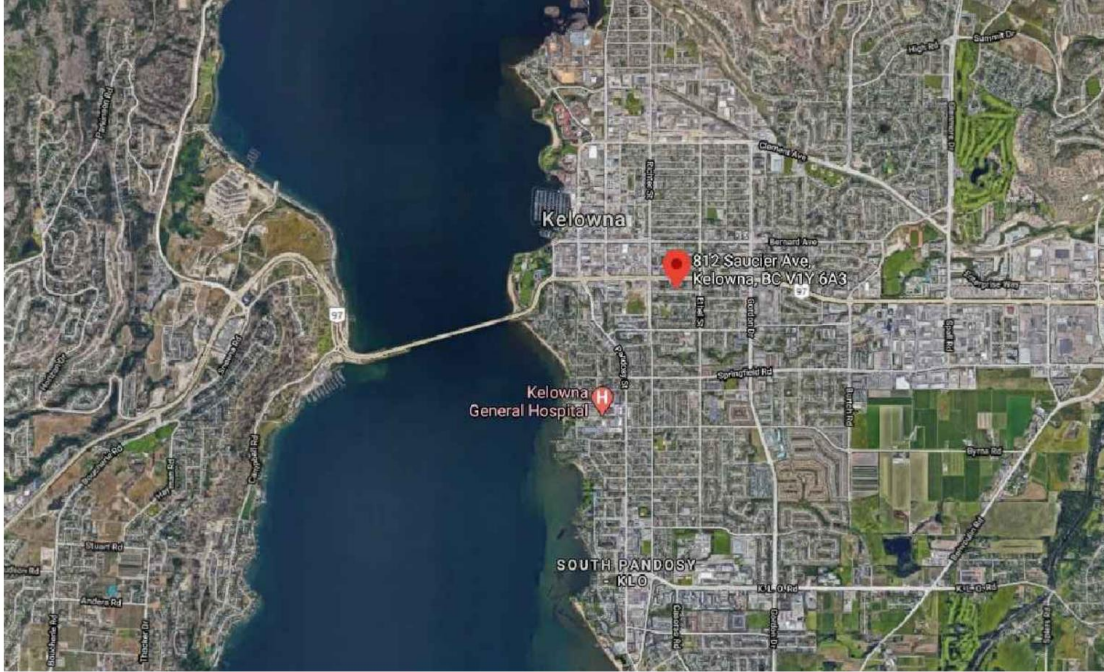
810 / 812 / 814 / 816 SAUCIER AVENUE, KELOWNA BC



WESTRICH PACIFIC CORP.

T 780 438 8811
F 780 438 9872

10309 102 Avenue NW,
Edmonton, AB T5J 0L1



CONTEXT PLAN



VIEW 1



VIEW 2



VIEW 3



VIEW 4

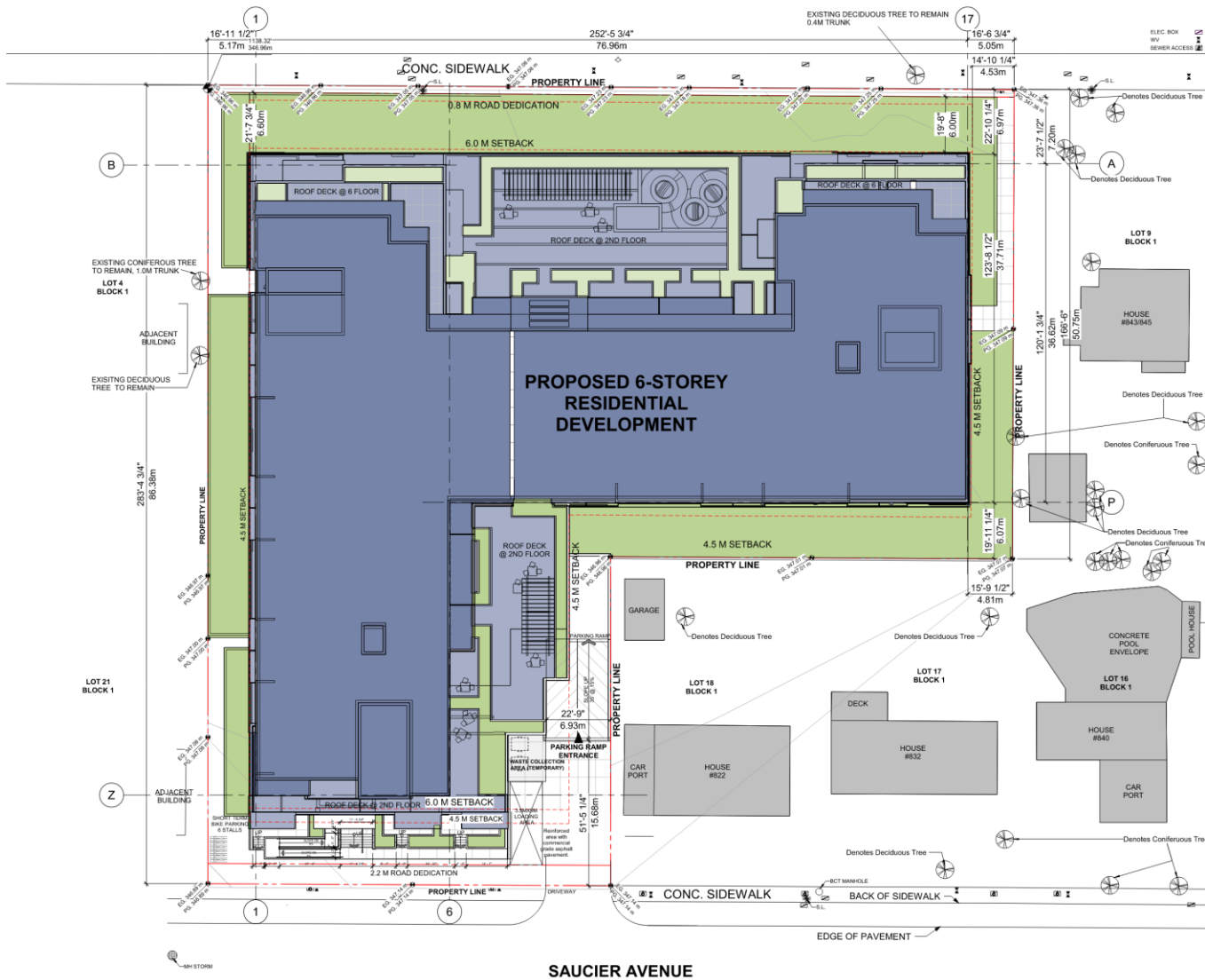


VIEW 5



VIEW 6

HARVEY AVENUE (HIGHWAY 97)



SAUCIER AVENUE

Site Plan

Zoning: RF3r

Site Area: 64,256 SF(5969.56 m²)

Site coverage: 66%

Maximum allowed: 65%, the only variance required

Maximum allowed impermeable site coverage: 85%

Provided impermeable site coverage: 81%

Total FAR area: 128,373 SF

FAR: 2.0

Total residential units: 171

Total amenity required: 3910 m²

Total amenity area provided: 3931 m²

Total parking required: 192

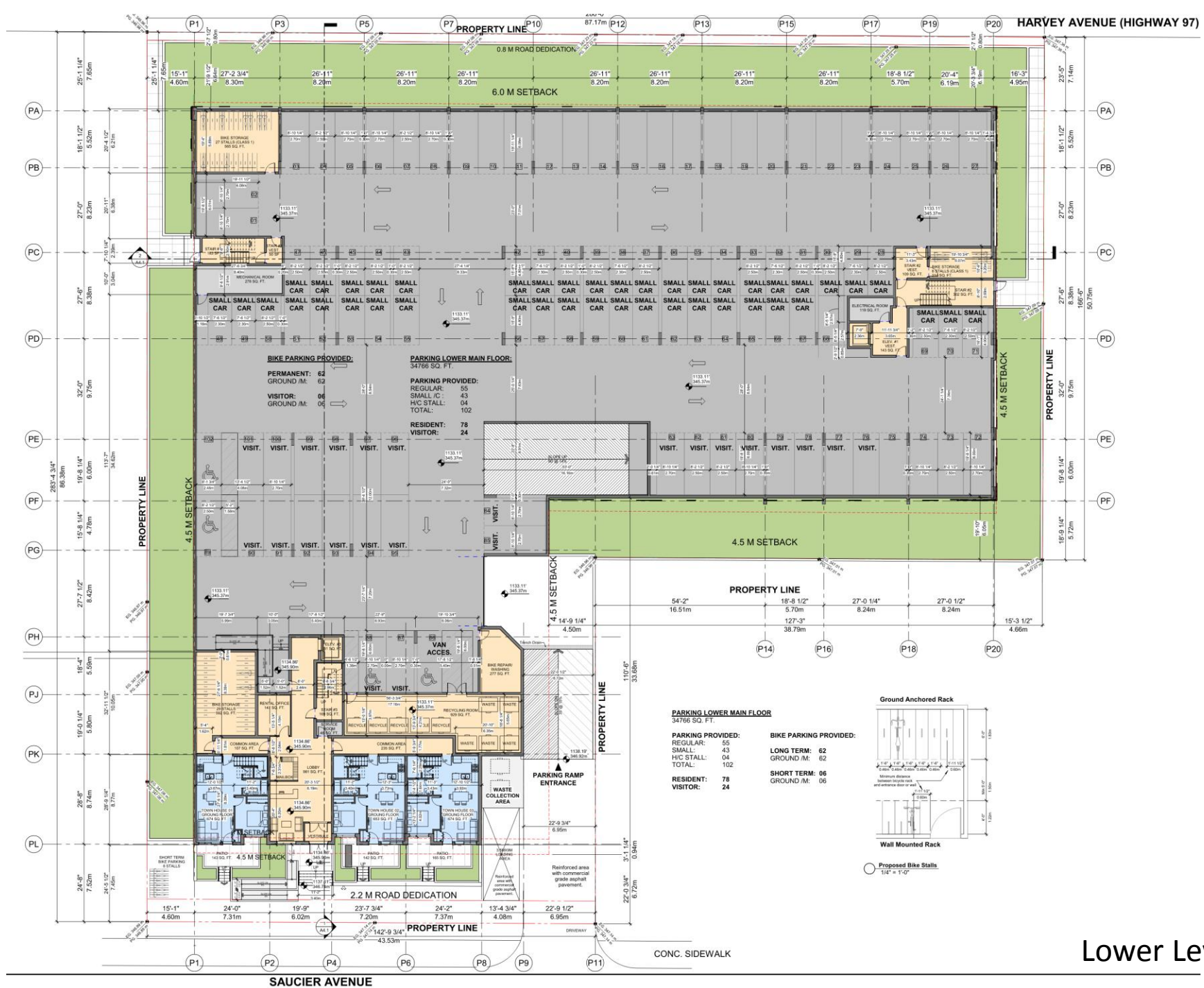
Total parking provided: 192

Total long term bike parking required: 133

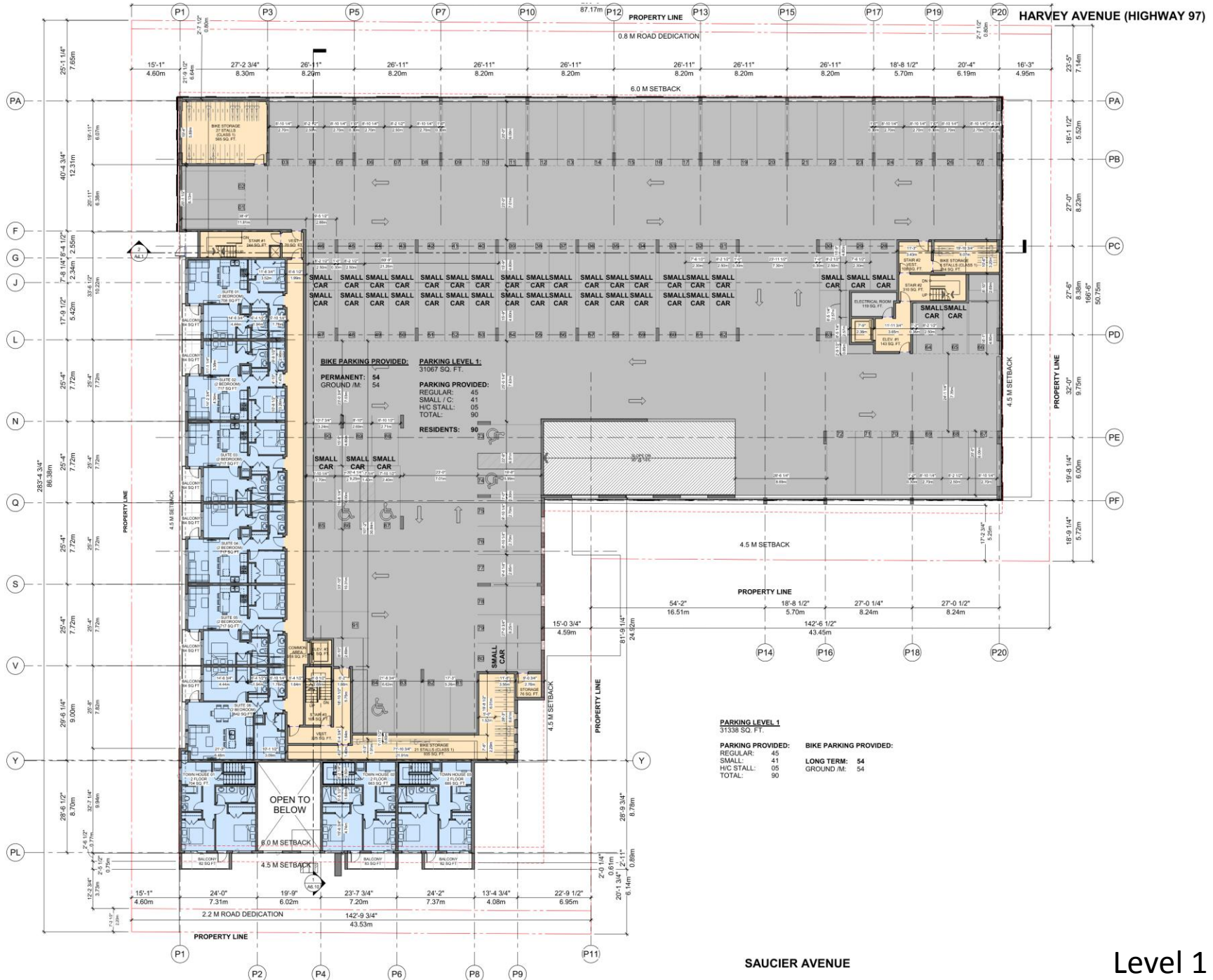
Total long term bike parking provided: 140

Total short term bike parking required: 6

Total short term bike parking provided: 6



Lower Level 1 Floor Plan



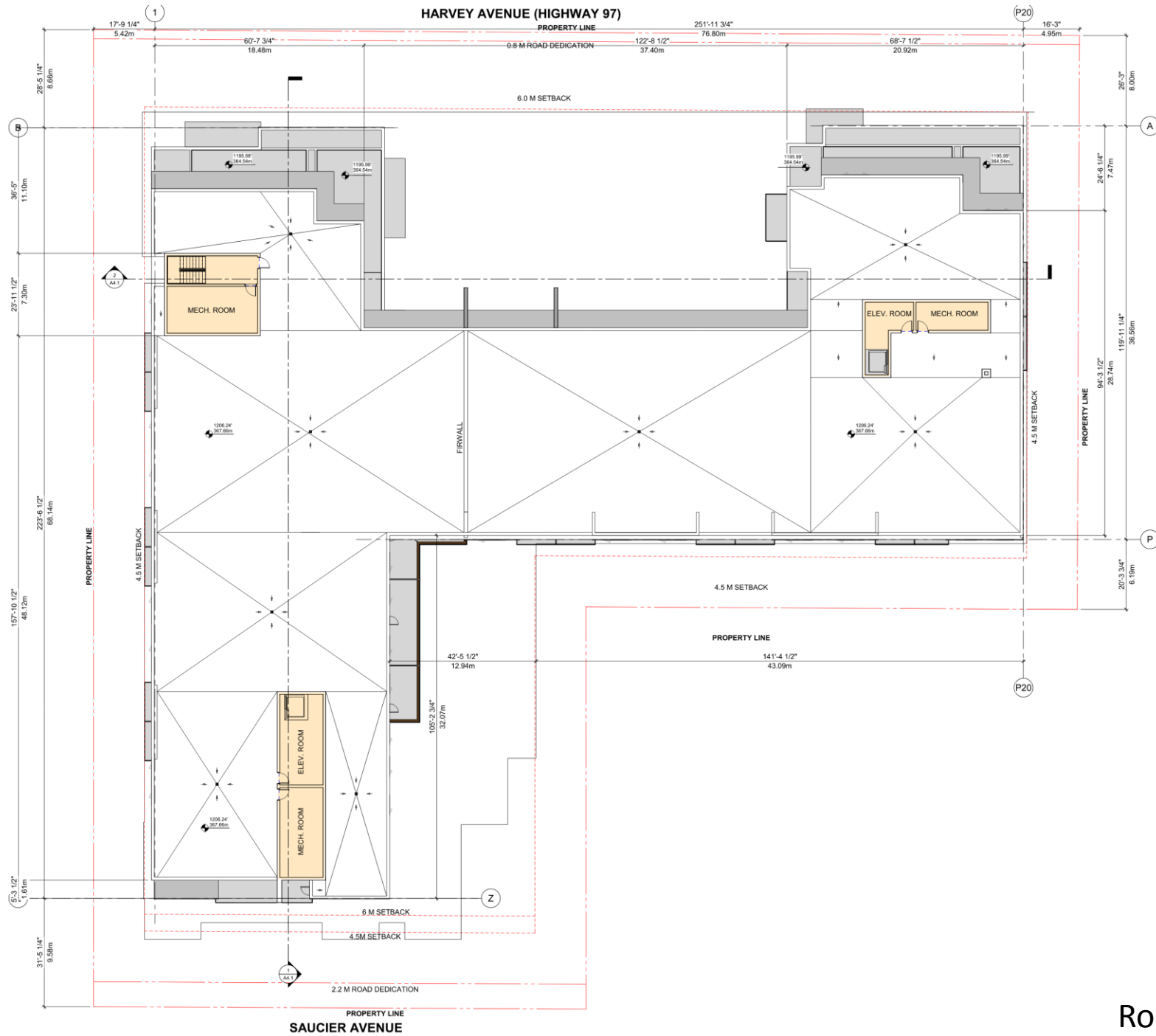
SAUCIER AVENUE

Level 1 Floor Plan



SAUCIER AVENUE

Level 3-5 Floor Plan



Roof Plan

MATERIAL LEGEND	
1	Metal Siding Wood Grain
2	Fibre Cementitious Panel - Blue
3	Fibre Cementitious panel - Dark Gray
4	Fibre Cementitious panel - Light Gray
5	Laser Cut Metal - White Colour
6	Translucent-glazed, metal glass guard railing
7	Thermally-Broken, Double Glazed Window and Door (Gray)
8	Privacy Screen : TYP. (Aluminum Louver)
9	Brick Veneer

Metal Siding
Wood Grain



Cementitious Panel
Blue



Cementitious Panel
Dark Gray

Cementitious Panel
Light Gray



Laser Cut Metal
White



Balcony Guardrail
Translucent-Glazed

Brick Veneer





3D View along Harvey Ave.



3D View along Saucier Ave.



Aerial View along Saucier Ave.



Roof Deck Outdoor Amenity Area