



City of
Kelowna

SDS Bylaw 7900 Transportation Update

July 24th, 2023

Overview

- ▶ What is the SDS Bylaw 7900?
- ▶ Why modernize the bylaw?
- ▶ Transportation Update
- ▶ Themes
- ▶ Update Process

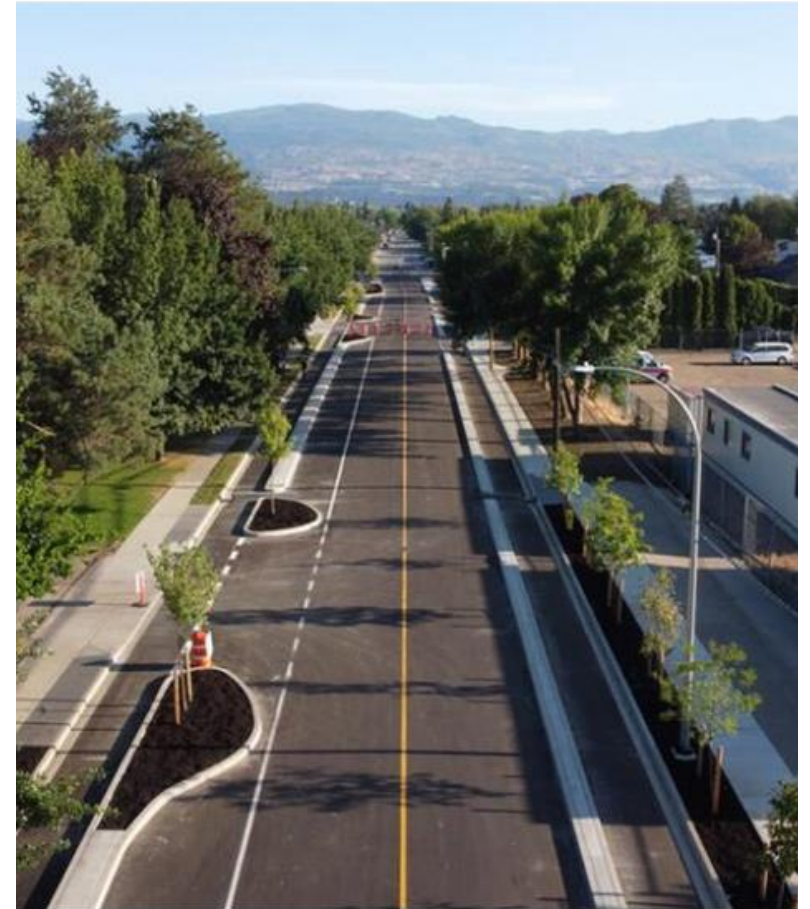
SDS (Bylaw 7900) – Transportation Update

- ▶ Provides Design and Construction Standards for works and services
 - ▶ Schedule 4 – Design Standards
 - ▶ Schedule 5 – Construction Standards
- ▶ It guides the design and construction of new infrastructure.
- ▶ It enables new development to serve our city better.
- ▶ It lays out a technical foundation to achieve big-picture goals.
- ▶ Ensure quality and long-lasting infrastructure that supports service delivery



Bylaw Updates Completed and Planned

- ✓ Sanitary Sewer
- ✓ Drainage
- ✓ Water
- ✓ Approved Products list
- ✓ Drawing Standards
- ✓ Electrical, Street Lighting & Signals
- ❖ **Transportation**
 - ▶ Landscaping & Irrigation
 - ▶ Hillside Development Standards



Bylaw Modernization

- ▶ Updates the **over 20 years old** highway design standards section of the SDS bylaw
- ▶ Follows current **best practices** in transportation planning and design
- ▶ **Aligns with the priorities** of :
 - ▶ Imagine Kelowna,
 - ▶ 2040 Official Community Plan, and
 - ▶ 2040 Transportation Master Plan.
- ▶ **Last major section** of the SDS bylaw to be modernized



City of
Kelowna

Transportation Update



Imagine Kelowna

2040
Transportation
Master Plan

Council
Priorities

2040 Official
Community Plan

SDS Bylaw 7900

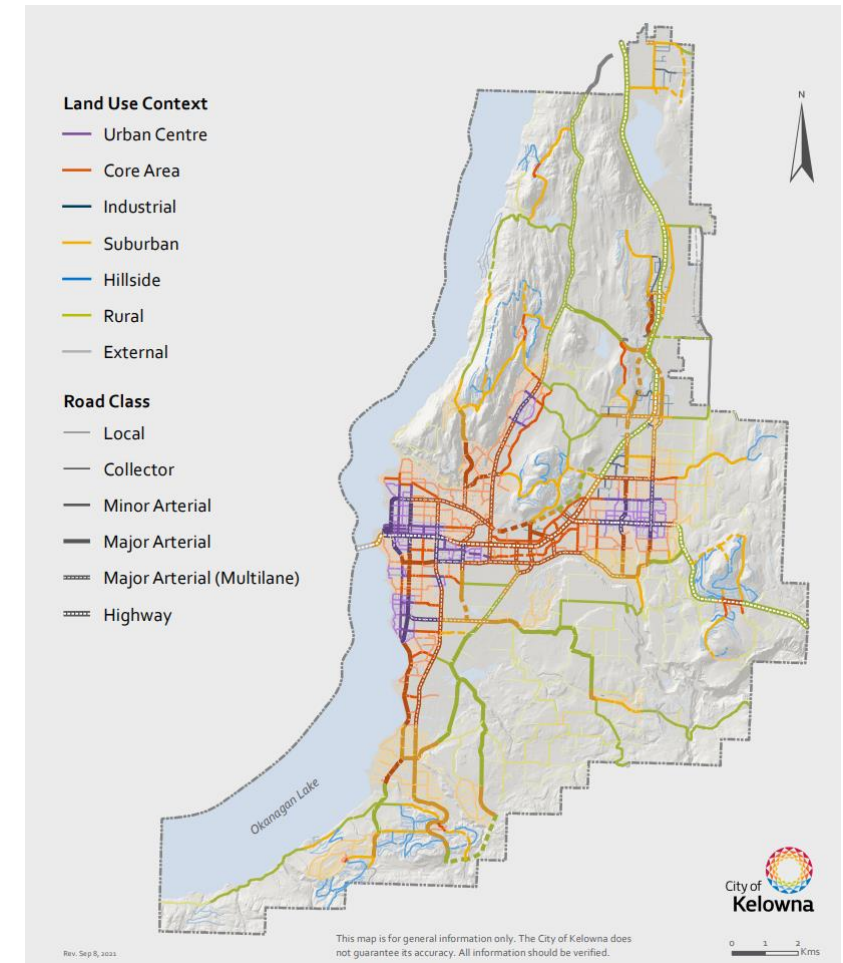


Guiding Principles

- 1 Provide certainty
- 2 Align with Council policy and best practices
- 3 Be context sensitive and flexible
- 4 Account for network impacts
- 5 Be consultative

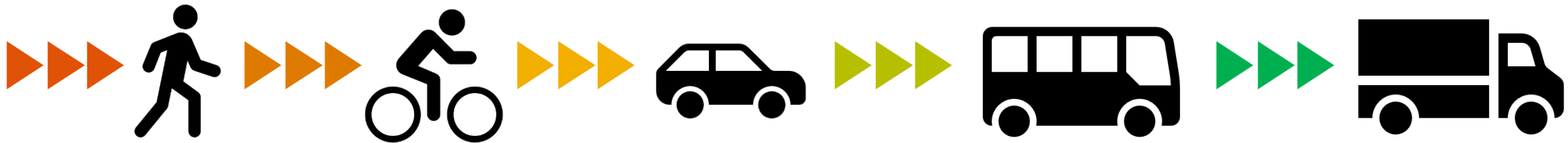
Theme 1: Consider Land Use Context

- ▶ Bylaw and Road Classification System considers 2040 OCP land use context.
- ▶ Cross sections and design standards better align with those land use contexts.
- ▶ Alignment streamlines the bylaw for developer use.



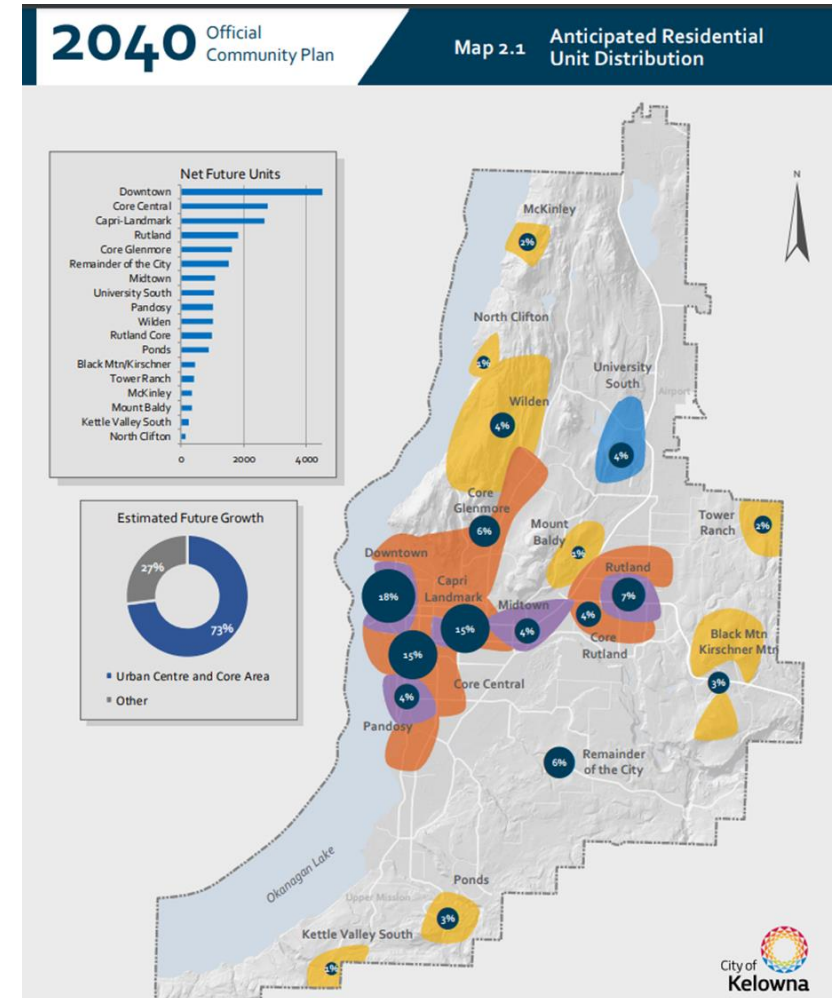
Theme 2: Multi-Modal Transportation

- ▶ The bylaw reflects a more inclusive approach to transportation.
- ▶ Updated road and vehicle design standards.
- ▶ Added standards for sustainable travel modes, including active transportation and public transit.
- ▶ Safety, accessibility and capacity are considered in a more balanced fashion.



Theme 3: Integrated Cross-Sections

- ▶ Cross-sections, mapping and text align with road classification system.
- ▶ Space and design priorities reflect the mix of travel in different areas and on different street types.
- ▶ Cross sections reflect adjacent development scale, form and character.



Theme 4: Consistent Organization

- ▶ Aligning Master Municipal Contract Documents (MMCD) Design Guidelines.
- ▶ MMCD coordinates construction standards across the province
- ▶ Being more consistent with MMCD makes it easier to use for developers, consultants and contractors
- ▶ Aligns with past updates City's has made



Theme 5: Updated Design Standards

- ▶ Consistency with Best Practices & Guidelines
- ▶ Best practices in transportation design have evolved.
- ▶ The focus has shifted from **moving cars** to **moving people**.

The SDS Bylaw has been updated to follow the latest versions of:

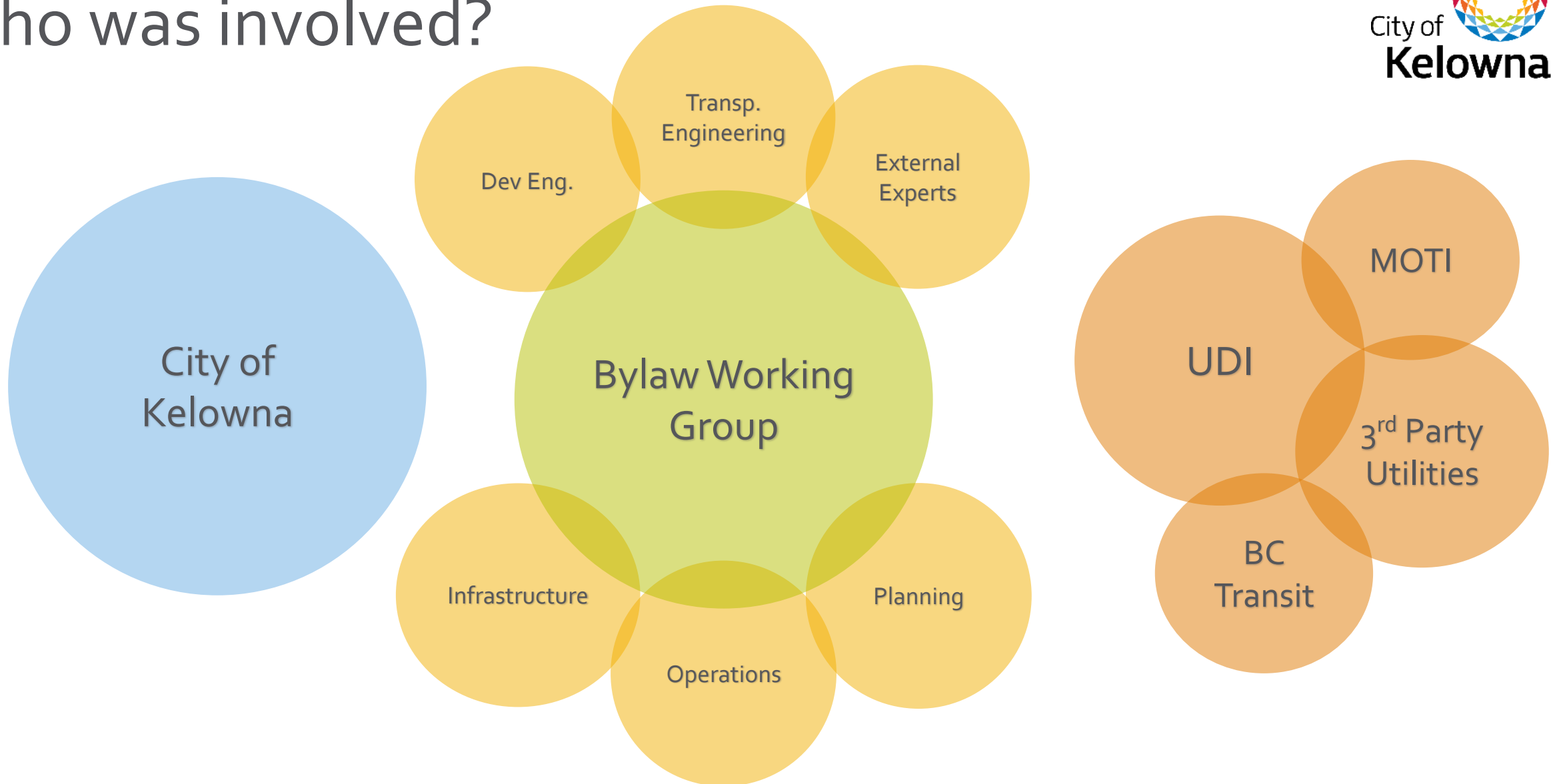
Provincial

- ▶ Master Municipal Contract Documents (MMCD) Design Guidelines
- ▶ BC Transit Infrastructure Design Guidelines
- ▶ BC Transit – Infrastructure Design Guidelines
- ▶ BC MOTI – BC Supplement to TAC Geometric Design Guide
- ▶ BC MOTI - Active Transportation Design Guide

Federal

- ▶ Geometric Design Guide for Canadian Roads, Transportation Association of Canada (TAC)
- ▶ Manual of Uniform Traffic Control Devices, TAC
- ▶ Canadian Guide to Traffic Calming, TAC
- ▶ Canadian Roundabout Design Guide, TAC
- ▶ Canadian Road Safety Audit Guide, TAC
- ▶ Bikeway Traffic Control Guidelines for Canada, TAC

Who was involved?





Implementation

- ▶ Once adopted
- ▶ Apply to new applications
- ▶ Some In-stream use old standards
- ▶ Training
- ▶ Continued dialog with industry
- ▶ Future bylaw updates contemplated



City of
Kelowna

Questions