

Our Kelowna: As We Play Parks Master Plan

Council Presentation: Phase One Summary

June 12, 2023

Parks Master Plan: Phase One

▶ Recommendation:

▶ Purpose:

- ▶ Summary of Parks Master Plan: Phase One Report

▶ Background

- ▶ Public demand for dynamic and attractive parks and amenities.
- ▶ 40-year vision with goals and overall park system framework.



Parks Master Plan: Phase One

► Policy Alignment:

- 2040 OCP goals and objectives.
- Imagine Kelowna vision and goals.
- Parks and open spaces priorities in other city planning documents.

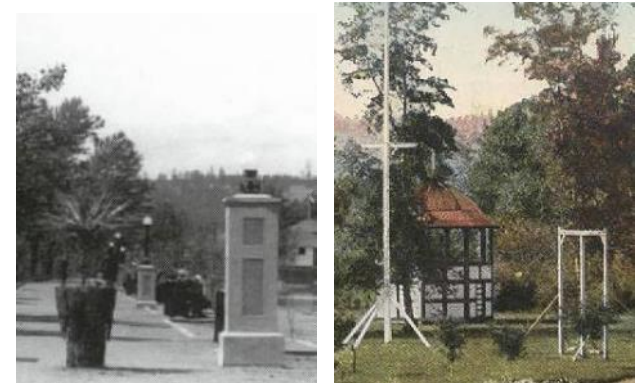


Parks Master Plan: Phase One

▶ **1. Introduction** purpose, three phases and policy alignment.

▶ **2. Context and Trends**

- ▶ City's past parks development.
- ▶ Current outdoor recreation trends.
 - ▶ Demographic trends
 - ▶ Activity and amenity trends



Most Popular Park Activities <i>(Canada-wide)</i>		Activities Increasing in Demand <i>(n BC)</i>	
Walking	Basketball	Trail-based recreation	BMX/Pump Tracks
Cycling	Baseball	Hiking	Mountain Biking
Sitting	Soccer	Waterplay	Indoor tracks
Picnics	Jogging/ Running	Splash pads	Ziplining
		Pickleball	

▶ *Appendix B: Kelowna Parks Plan Trends Report*

Parks Master Plan: Phase One

▶ 3. Phase One Engagement Summary

▶ Digital-first tools & options – Nov. 2021 to March 2022:

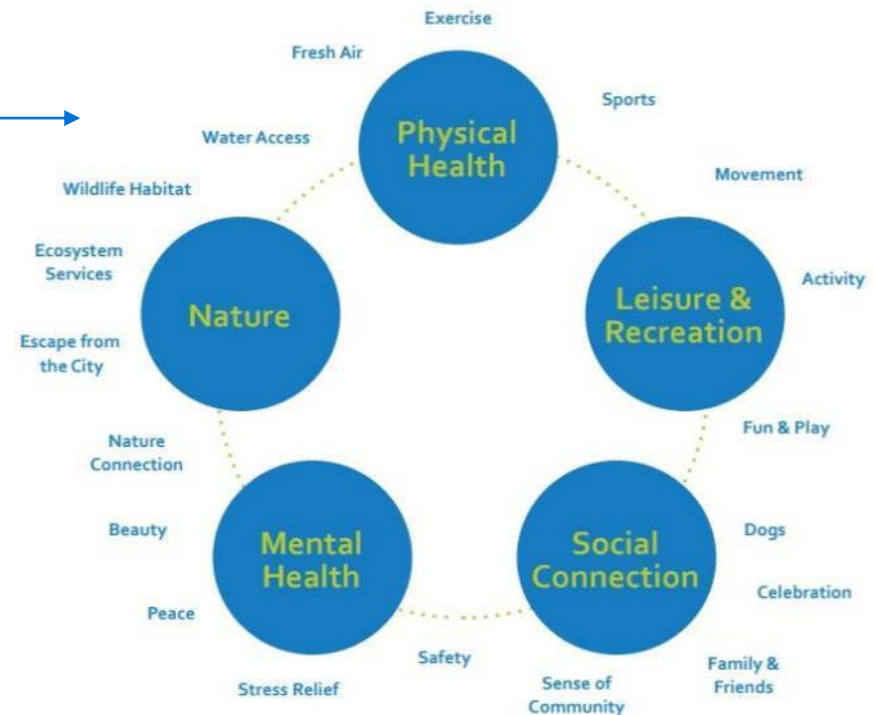
- ▶ 970 conversations
- ▶ 383 total surveys/ discussion guides
 - ▶ City's *Get Involved* website hub.
 - ▶ On-line survey (citizens).
 - ▶ Downloadable home survey (families).
 - ▶ Group discussion booklet (groups).
 - ▶ Engagement posters w/ QR code. (24 park locations)
 - ▶ On-site posting sign boards (4 park locations).
 - ▶ Virtual workshops (4).
 - ▶ Social media and newspaper ads.



Parks Master Plan: Phase One

▶ Emerging Topics (public engagement):

- ▶ Benefits of our parks system. →
- ▶ Key issues influencing our parks:
 - ▶ Equity and inclusion
 - ▶ First Nations
 - ▶ Balancing use and protection of natural areas
 - ▶ Unhoused populations
 - ▶ Natural hazards (fire, flooding, etc.)
- ▶ Park visitation and travel.
- ▶ Barriers to accessing parks.
- ▶ Park activities.
- ▶ Park planning priorities.



63%

of participants face barriers accessing parks

43%

of participants drive less than 15 minutes to get to a park

70%

of participants felt preserving natural creeks/ forest were very important

▶ *Appendix C: What We Heard*

Parks Master Plan: Phase One

▶ 4. Current State of Parks

▶ All Open Spaces

- ▶ Municipal & parkland*.
- ▶ **Active parks** or natural areas.

▶ Active Parks:

- ▶ Access and service levels
- ▶ 500 m and 3 kms catchment areas.



SERVICE LEVEL	CATCHMENT	AMENITIES/FEATURES	
 Neighbourhood Level	500 m	<ul style="list-style-type: none"> • Neighbourhood Parks • Playgrounds (schools & parks) 	<ul style="list-style-type: none"> • Forested Areas / canopy cover • Unprogrammed Space > 2000m²
 Community Level	3 km	<ul style="list-style-type: none"> • Community Parks • Basketball (schools & parks) • Bookable event spaces • Community gardens • Off-Leash Dog parks • Outdoor ice skating 	<ul style="list-style-type: none"> • Tennis / pickleball • Public art • Skate parks • Public washrooms • Water access (beaches / swimming areas & waterparks)
 Destination Level			
City-Wide	N/A	<ul style="list-style-type: none"> • City-wide parks • Main event spaces 	<ul style="list-style-type: none"> • Motorized boat launches
Recreation	N/A	<ul style="list-style-type: none"> • Recreation Parks • Indoor recreation facilities • Baseball / Softball • Paved courts 	<ul style="list-style-type: none"> • Sports fields (grass and artificial turf) • Volleyball courts

Parks Master Plan: Phase One

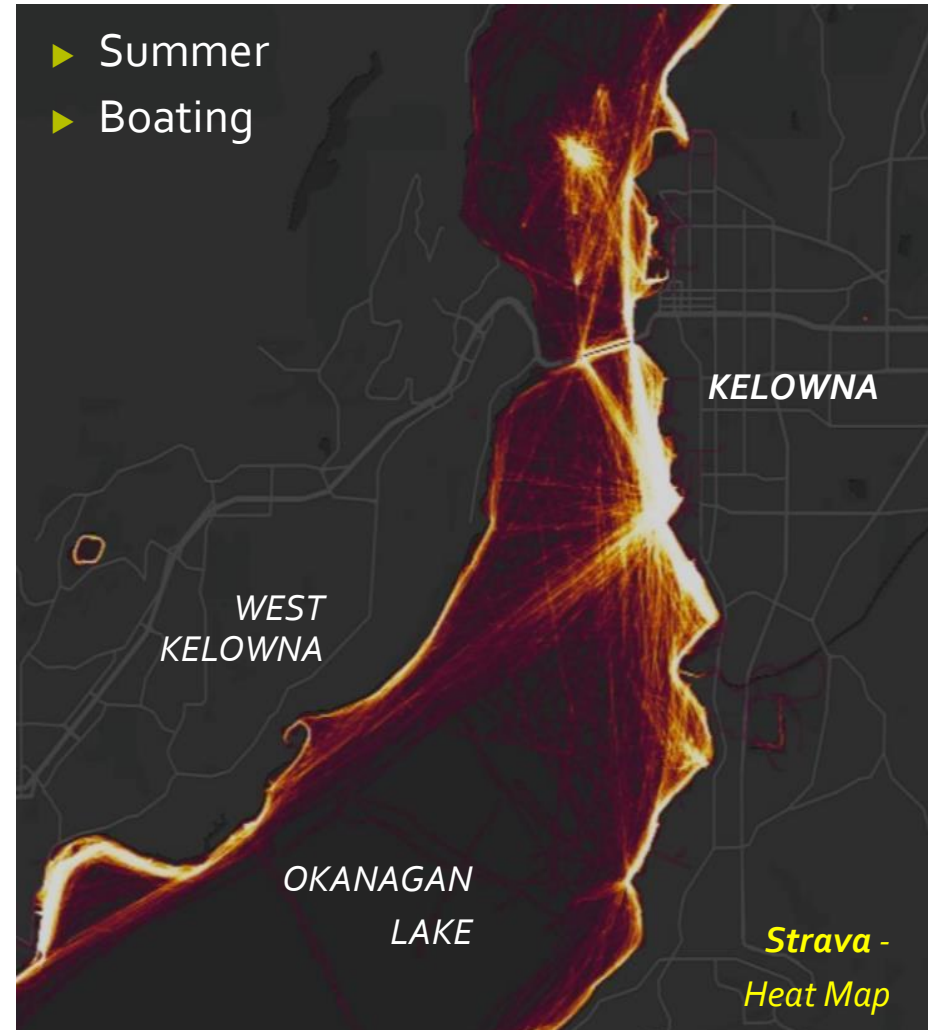
- ▶ Distribution Analysis Method
 - ▶ City GIS files
 - ▶ **Active City Parks***
 - ▶ Other open spaces
 - ▶ Natural areas & wetlands
 - ▶ Walkability – buffer & catchment



Buffer: An area reflecting an even 500m radius from park centre, ignoring urban form and physical obstacles

Catchment: An accessible area following walkable 500m distances along roads and pathways

- ▶ Visitation times and patterns
 - ▶ Location-based social data
 - ▶ Eco-counters and registrations

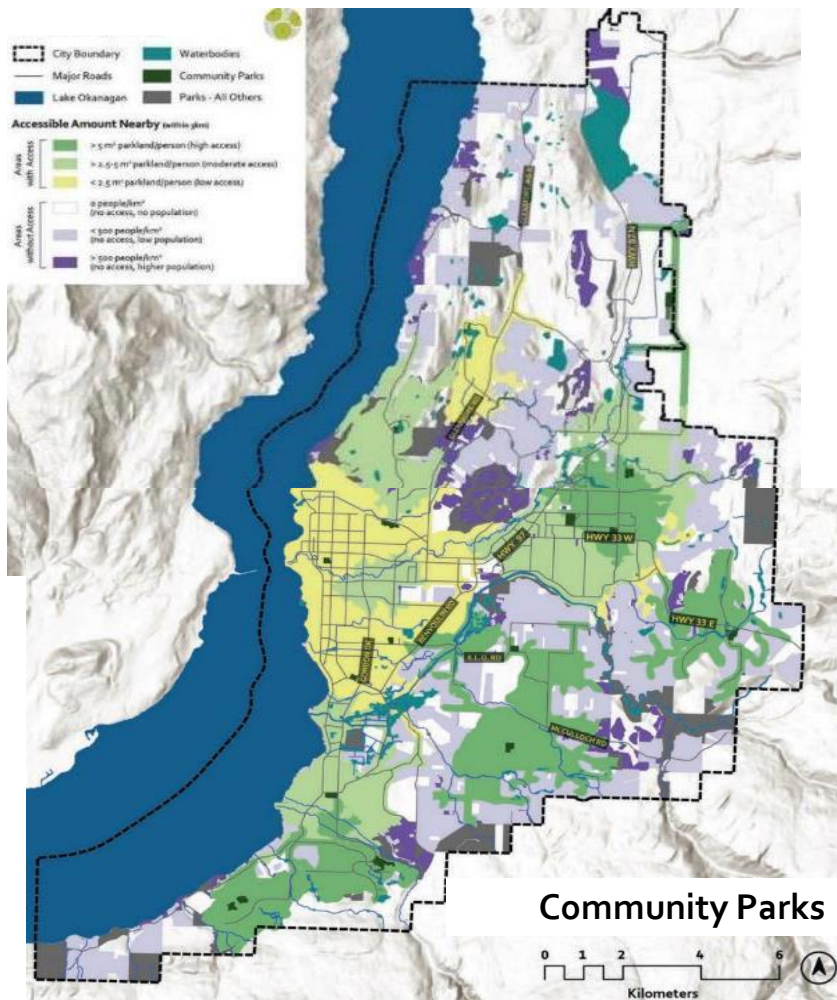


Parks Master Plan: Phase One

- ▶ Summer
- ▶ Hiking and Running

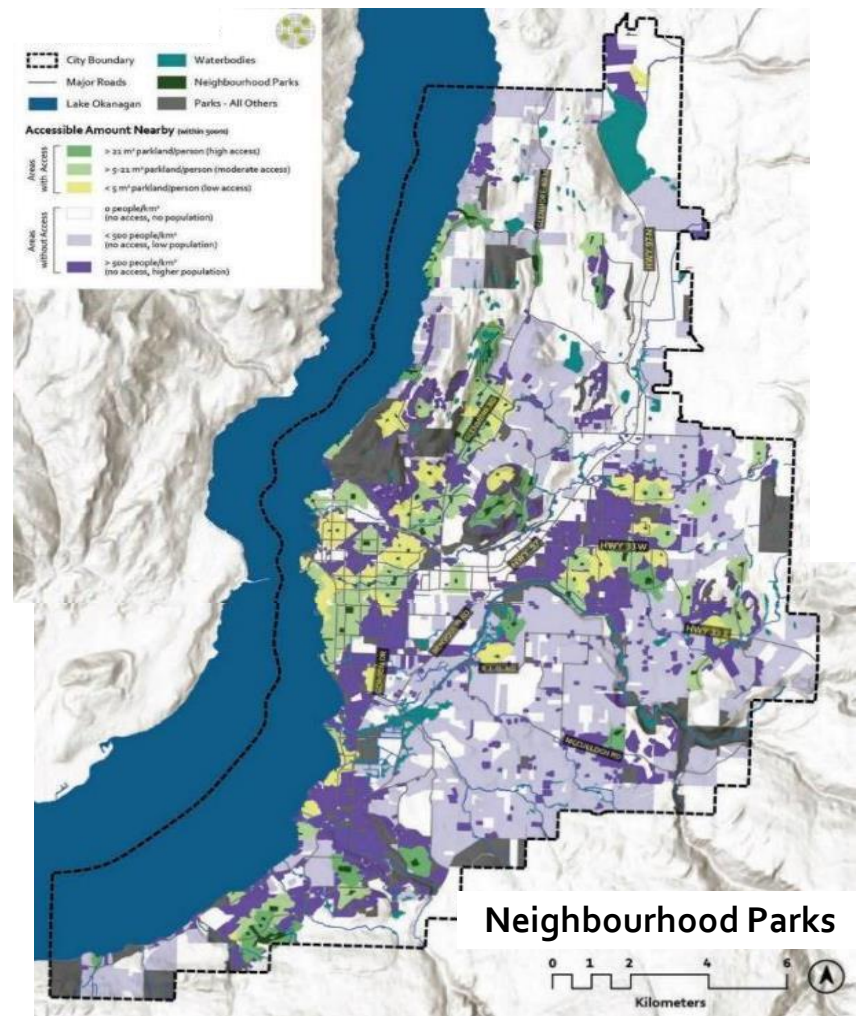


- ▶ Winter
- ▶ X country and downhill skiing



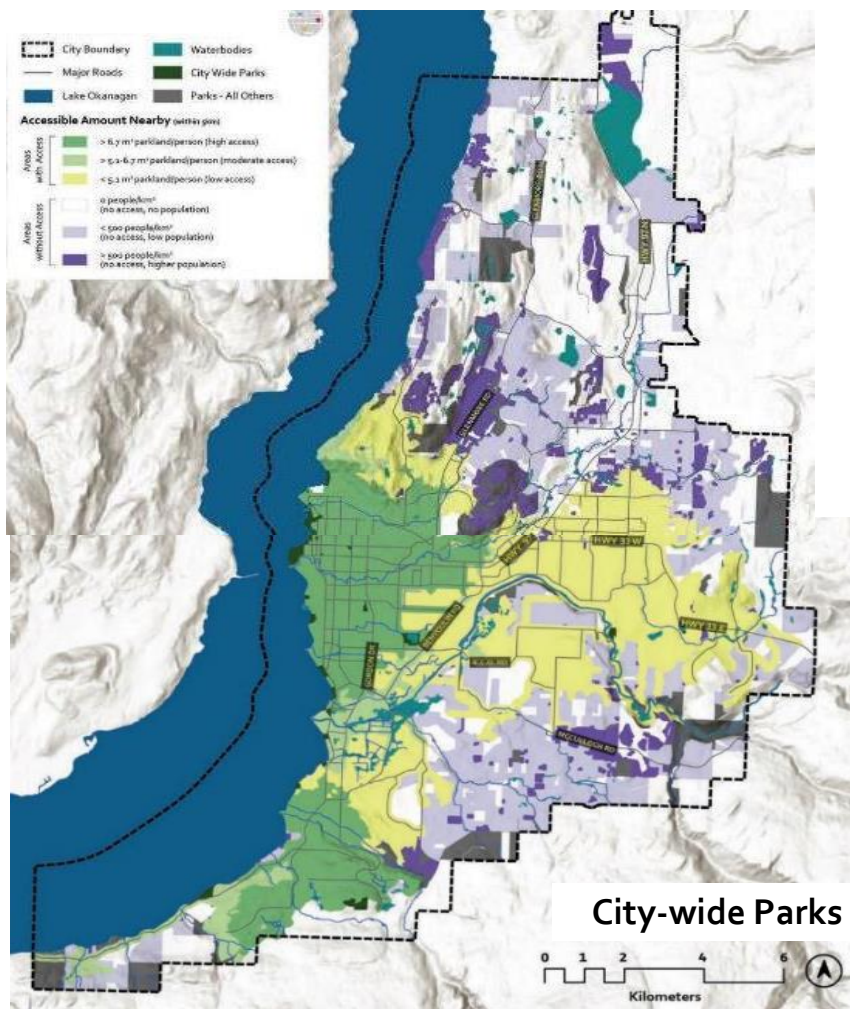
Community Parks

QTY.: 20 community parks
 CATCHMENT: 3 kms
 ACCESS: 81% of residents access
 19% of residents do not



Neighbourhood Parks

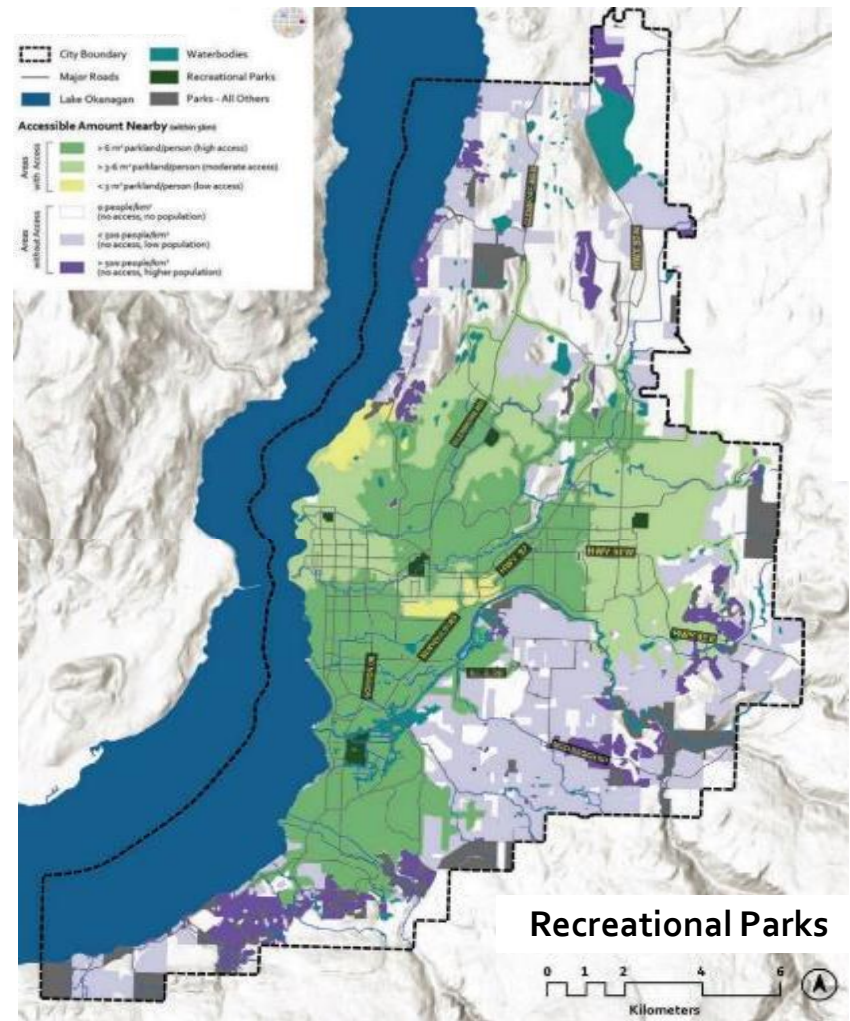
QTY.: 116 nhbd. parks
 CATCHMENT: 500 m
 ACCESS: 42% of residents access
 58% of residents do not



QTY.: 26 city-wide parks

CATCHMENT: 3 kms

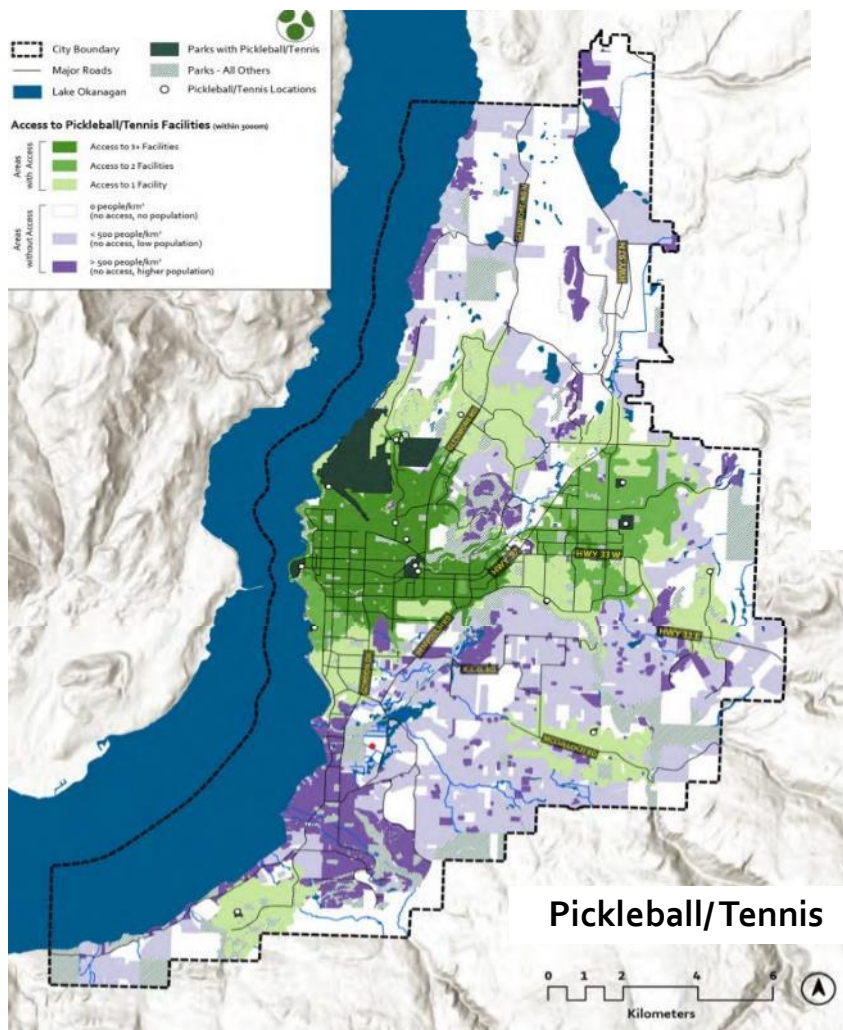
ACCESS: 77% of residents access
23% of residents do not



QTY.: 5 recreation parks

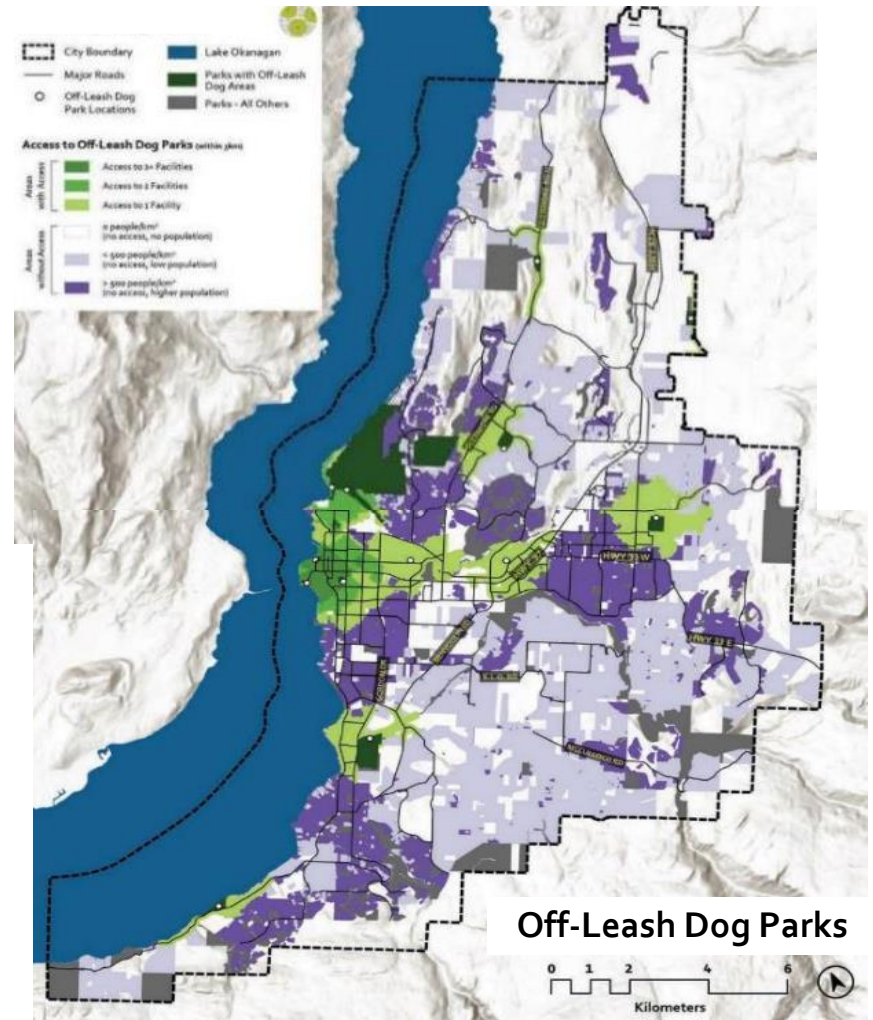
CATCHMENT: 3 kms

ACCESS: 81% of residents access
19% of residents do not



Pickleball/Tennis

QTY.: 15 court sites
 CATCHMENT: 3 kms
 ACCESS: 75% of residents access
 25% of residents do not



Off-Leash Dog Parks

QTY.: 13 dog parks
 CATCHMENT: 3 kms
 ACCESS: 65% of residents access
 35% of residents do not

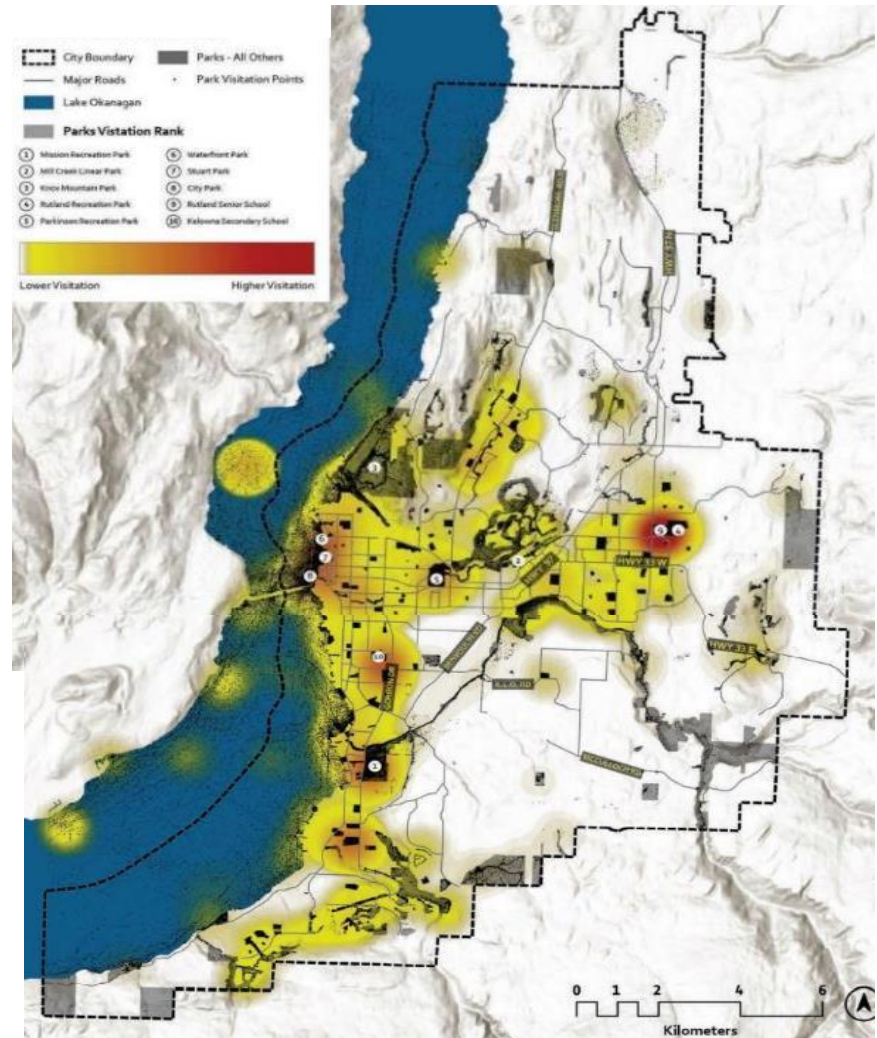
Parks Master Plan: Phase One

▶ Park Visitation

City's Top Active Parks

1. Mission Recreation Park
2. Mill Creek Open Spaces - KVR
3. Knox Mountain Park
4. Rutland Recreation Park
5. Parkinson Recreation Park
6. Waterfront Park
7. Stuart Park
8. City Park

** No RDCO, BC Parks or SD lands.*



Parks Master Plan: Phase One

▶ 5. Framework for the Future

▶ Creation of Vision and Principles

- ▶ Future vision statement
- ▶ **Seven (7) guiding principles**

OCP

Feedback



Equity: Parks and amenities are provided and designed inclusively for the safety and enjoyment of everyone.

Official Community Plan Objectives

- Objective 9.1. Incorporate equity into planning decisions and resource allocation in our community.
- Objective 9.2. Strengthen the relationship with the syilx/Okanagan people through initiatives and processes to advance and support reconciliation in Kelowna.
- Objective 9.4. Ensure that all community members are safe and included.




Public & Stakeholder Engagement Feedback

- 'universal access' and 'clean & safe' key themes for what makes a great public space
- 'safety: I don't feel safe in parks' was the number one barrier to accessing parks
- "focusing on neighbourhoods that are underserved by parks" was ranked as the highest acquisition & park development priority
- Inclusivity and accessibility major themes from stakeholder engagement
- Amenity gaps a key challenge identified through stakeholder discussions

- ▶ **Equity**
- ▶ Stewardship
- ▶ Vibrancy
- ▶ Collaboration
- ▶ Connectivity
- ▶ Celebration
- ▶ Adaptability

Parks Master Plan: Phase One

- ▶ **Fourteen (14) goals** support the guiding principles.
- ▶ Confirms future vision for city parks system.

GOAL	DESCRIPTION	GUIDING PRINCIPLES
1	Strive to provide equitable local access to neighbourhood & community level amenities across the city.	
2	Design communities and parks to support walkability and improve the pedestrian experience through high quality pathway design and wayfinding in parks.	
3	Acquire additional parkland to protect natural areas and ecological diversity within Kelowna.	

Connectivity
Vibrancy
Celebration

▶ Clear tracking ability with metrics
 ▶ To be confirmed later in phases 2 and 3

Equity
Stewardship
Collaboration
Adaptability

Parks Master Plan: Phase One



Vision Statement:

Kelowna's parks celebrate and protect the unique landscapes and people of the Okanagan Valley. From the lake to the mountains, they connect our communities through a network of vibrant destinations bringing people together and fostering responsible stewardship. Our parks support a resilient and active city by providing equitable access to diverse recreational and cultural experiences.

Fall 2021/ Summer 2022

Fall 2022/ Summer 2023

Fall 2023/ Summer 2024

As topics emerge

► Next Steps:

Phase 2 – Strategic Moves

- ✓ Public and stakeholder re-engagement.
- ✓ Identify 'opportunities' for parks, open spaces and trails; plus, program 'gaps'.
- ✓ Thorough park planning at urban centre-scale
- ✓ Recommendations: parks and open spaces development with connections



Questions?

For more information, visit kelowna.ca.