

*Long-term Parks Planning
Initiative:*

Pickleball and Tennis Outdoor Court Provision

April 3, 2023

Long-term Parks Planning Initiative

▶ **Purpose:**

- ▶ endorse long-term parks planning initiative concerning outdoor pickleball and tennis court provision.

▶ **Background:**

- ▶ both pickleball and tennis are exceptionally social sports.
 - ▶ participants can play into their 80 - 90's.
 - ▶ large uptake in youth enrollment
- ▶ *2015 Kelowna Tennis Strategy*
 - ▶ 1 public tennis court/ 4,180 population
 - ▶ 34 courts (2021 census)



Long-term Parks Planning Initiative

▶ **Background**

- ▶ current user demand far surpasses our existing city outdoor inventory
 - ▶ 12 existing city pickleball courts
 - ▶ 26 existing city tennis courts.
 - ▶ 1 club operated facility – OMTC
 - ▶ 1 commercial, private racquet facility
- ▶ new court facilities (2023-24)
 - ▶ 9 pickleball courts and 3 tennis courts.
 - ▶ amongst Glenmore Recreation Park and DeHart Community Park.
- ▶ similar user demand/ service requests for indoor court facilities



Long-term Parks Planning Initiative

▶ Pickleball

- ▶ B.C. has become national 'hotspot'
 - ▶ 600% increase in membership.
 - ▶ Pickleball B.C. - inception 2017
 - ▶ 13,025 players in 82 affiliated and associated clubs
 - ▶ Kelowna is the 2nd largest club in B.C.
 - ▶ 600 members + 100 waiting list
 - ▶ memberships sell out in 15 minutes/ registration opening.
- ▶ 8% of all Canadian households
 - ▶ 3.06 million people (Pickleball Canada).
 - ▶ 1 person/ playing monthly
 - ▶ 45% play over 4 times/ month (1.3 M)



Long-term Parks Planning Initiative

▶ Tennis

- ▶ Tennis Canada - inception 1890
 - ▶ resurgence in popularity.
- ▶ emergence of young Canadian stars
 - ▶ BC's - Vasil Pospisil or Calvin Thalheimer.
 - ▶ 250% increase in national membership.
 - ▶ 300% increase in players < 12 years.
- ▶ Okanagan Mission Tennis – 1920
 - ▶ 400 members in 2022.
 - ▶ 10% yearly increase (40 players).
 - ▶ 2023 already sold out.
- ▶ only 2 indoor courts in Kelowna
 - ▶ Global Fitness and Racquet Club.



*Futures Tennis
Tournament*



Calvin Thalheimer



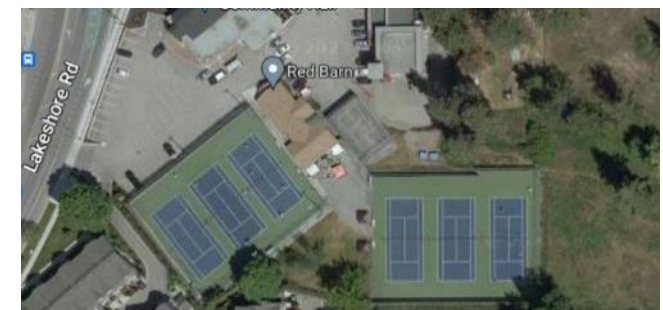
2022 OMTC



Bianca Andreescu



Francoise Abanda



Okanagan Mission Tennis Club

Long-term Parks Planning Initiative

▶ For Information

- ▶ Rising pressure on our current city inventory to deliver:
 - ▶ more access to outdoor courts.
 - ▶ ability for tournament play.
 - ▶ national and provincial associations
 - ▶ athlete development.
 - ▶ improved overall user experiences.
 - ▶ wait times
 - ▶ supportive amenities
- ▶ Long-term parks planning initiative conceived to:
 - ▶ meet immediate, and future growth, needs for both pickleball and tennis.



Long-term Parks Planning

► Satellite Hubs: Tennis



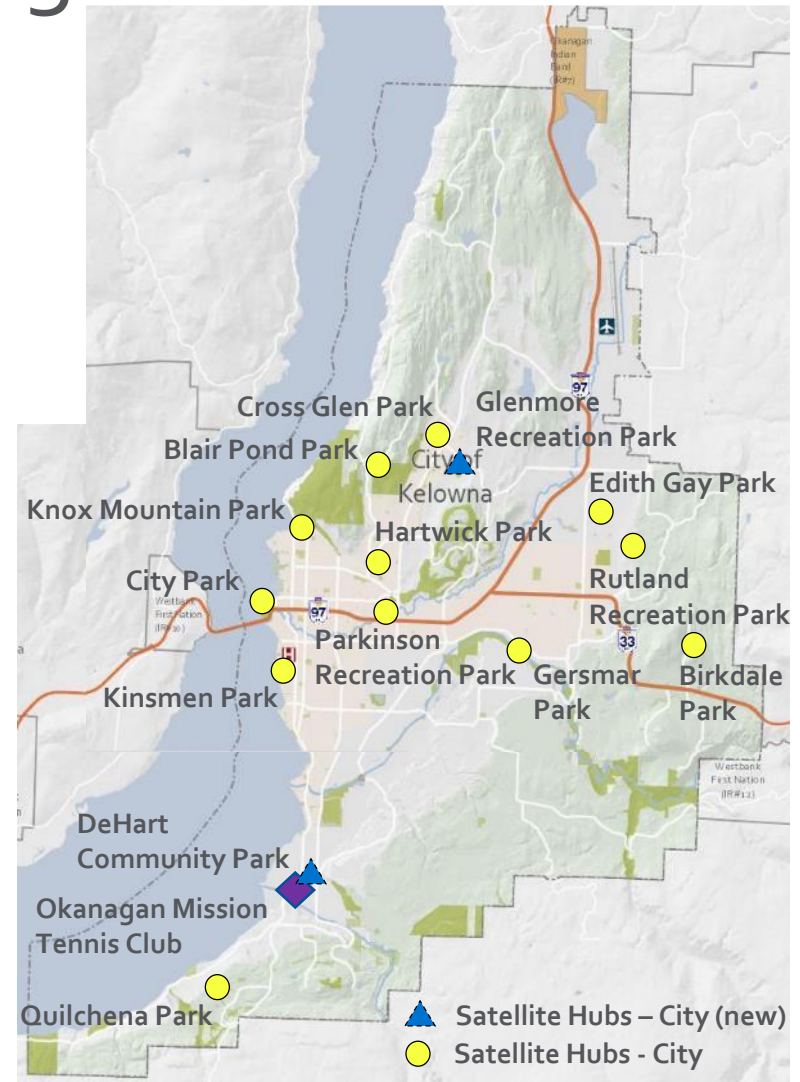
Edith Gay Park – community / double



Cross Glen Park – nhbd. / single court



Parkinson Recreation Park – six courts



Long-term Parks Planning

► Feature Destination: Tennis



Mississauga Tennis Complex + Ontario Tennis



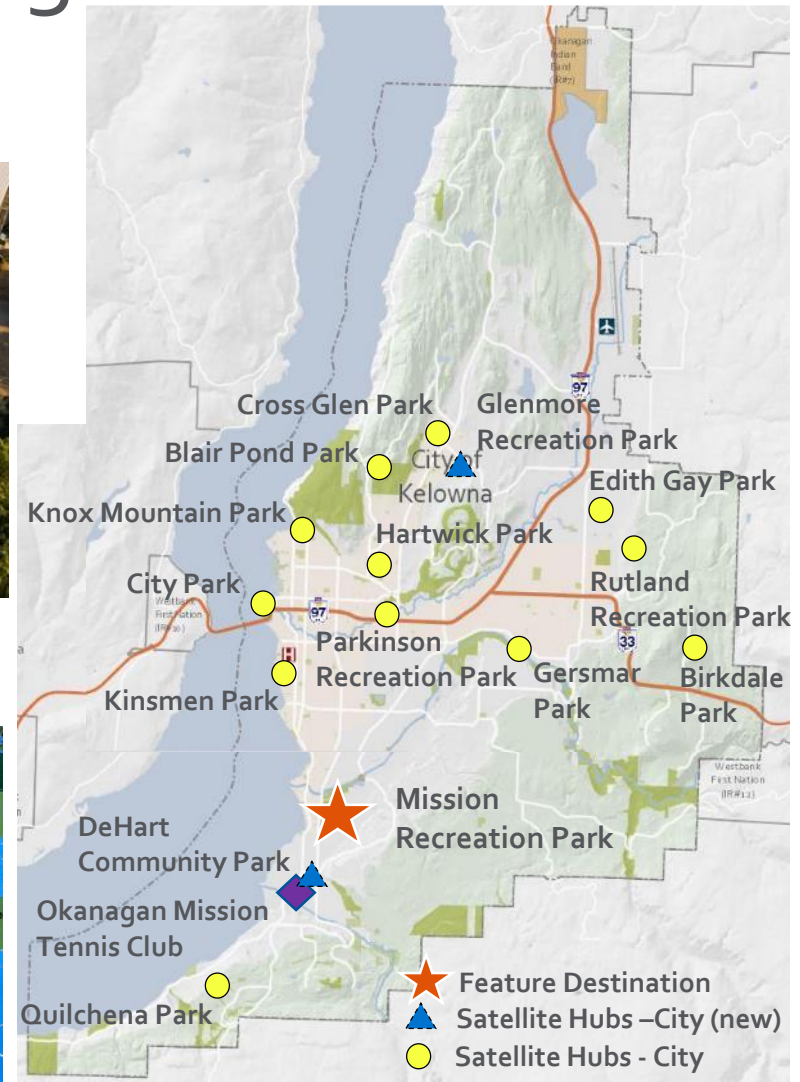
Futures Tennis Tournament, Kelowna



Stanley Park Tennis Facility, Vancouver



City of Surrey Tennis Facility



Long-term Parks Planning

► Satellite Hubs: Pickleball



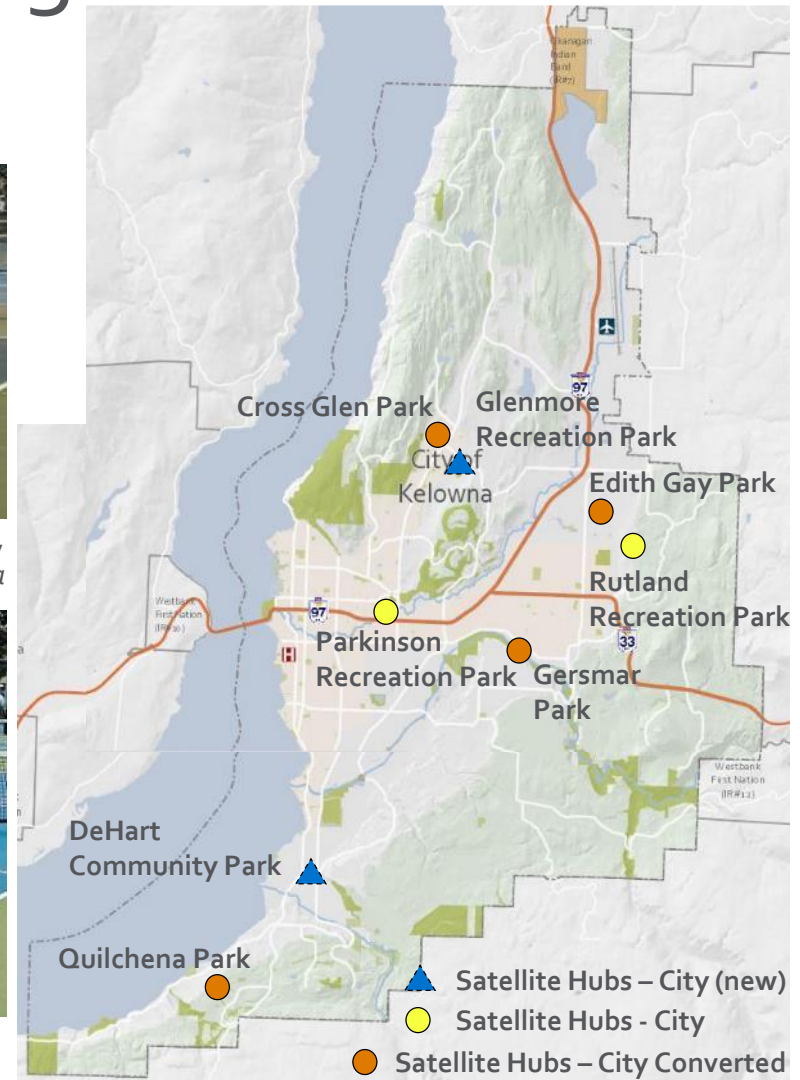
Parkinson Recreation Park – 'dedicated' pickleball courts, City of Kelowna



2019 Nationals, City of Kelowna



Rutland Recreation Park – 'dedicated' pickleball courts, City of Kelowna



Long-term Parks Planning

► Feature Destination: Pickleball



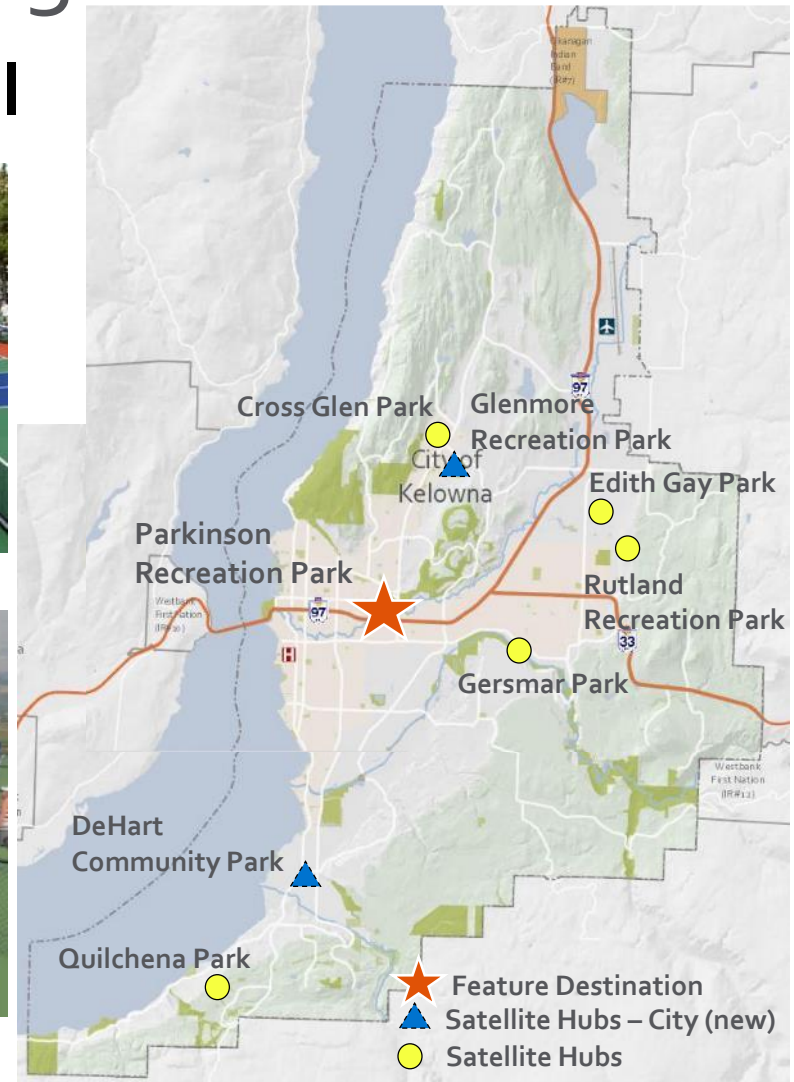
*Little Valley Pickleball Complex,
St. George, Utah*



Clear Creek Park, Cincinnati, Ohio



*City of Vernon – 'dedicated' pickleball courts
w/ overhead shade/shelter complex*

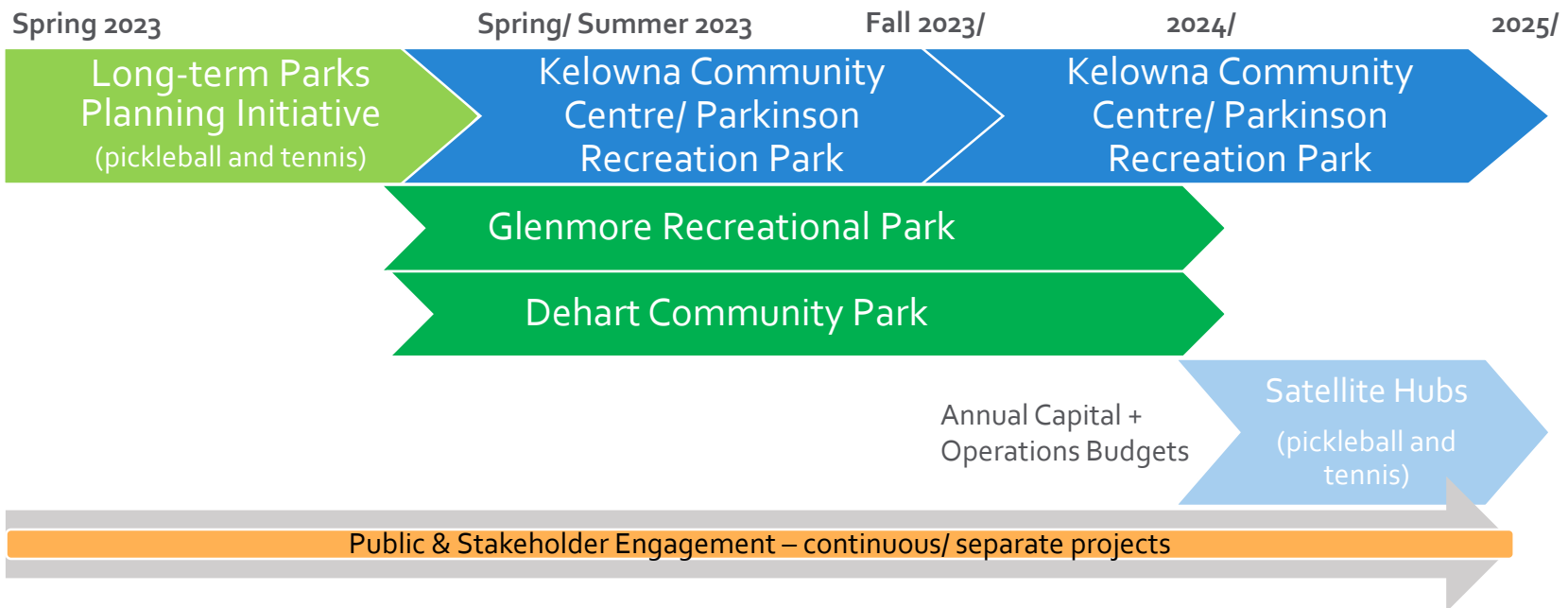


Long-term Parks Planning Initiative

► Next Steps:

Parks Master Plan: Phases 2 and 3

- ✓ Community Sport Plan
- ✓ Indoor Recreation Facility Strategy
- ✓ Kelowna Tennis Strategy





Questions?

For more information, visit kelowna.ca.