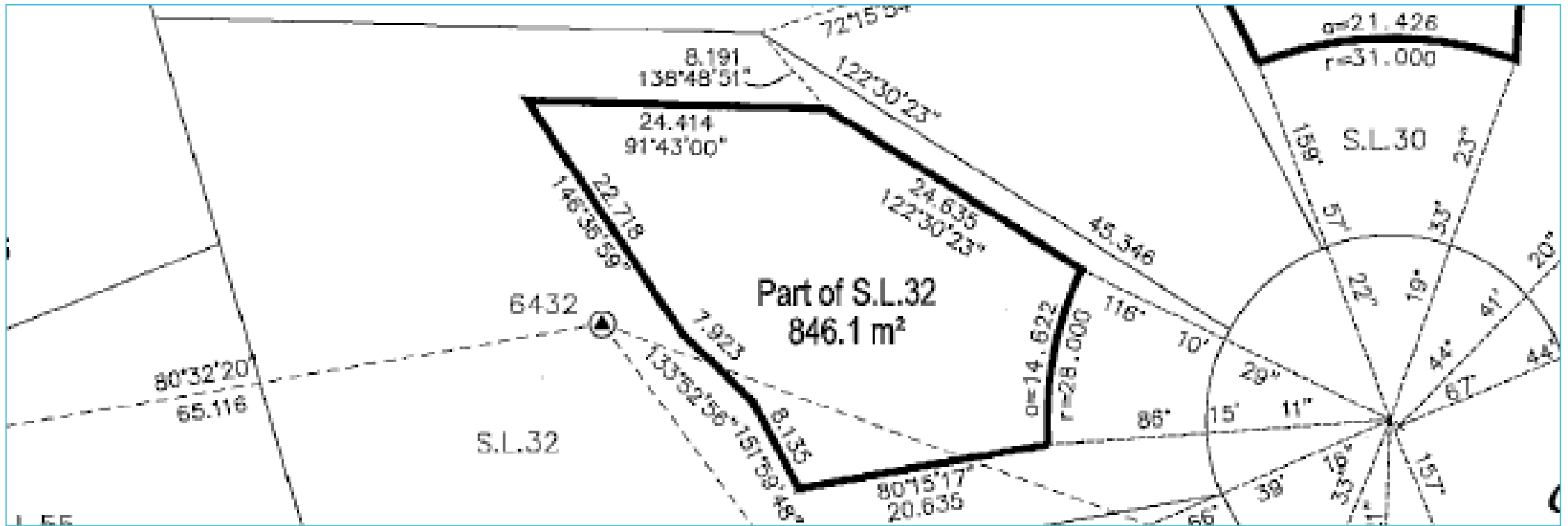




Development Variance Permit

1160 Stoneypointe Ct.



Land constraints



Current vacant site with view to immediate east neighbour



Current vacant site looking to north neighbour



Immediate neighbour

Neighbourhood context



Project
Details



The initial design as seen from the street

Revised design with
variance request




The variance request to a height of 13.56m will allow an upper floor for a master bedroom & ensuite. The upper floor area is proposed at 1,000sq.ft. or 93m².



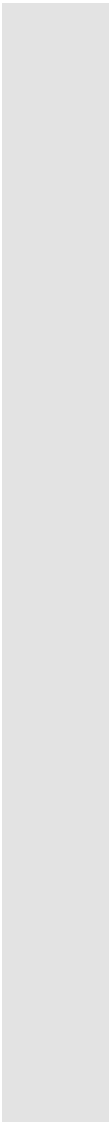
Confirming design with roof top deck viewed from east



Design requiring variance for height viewed from east



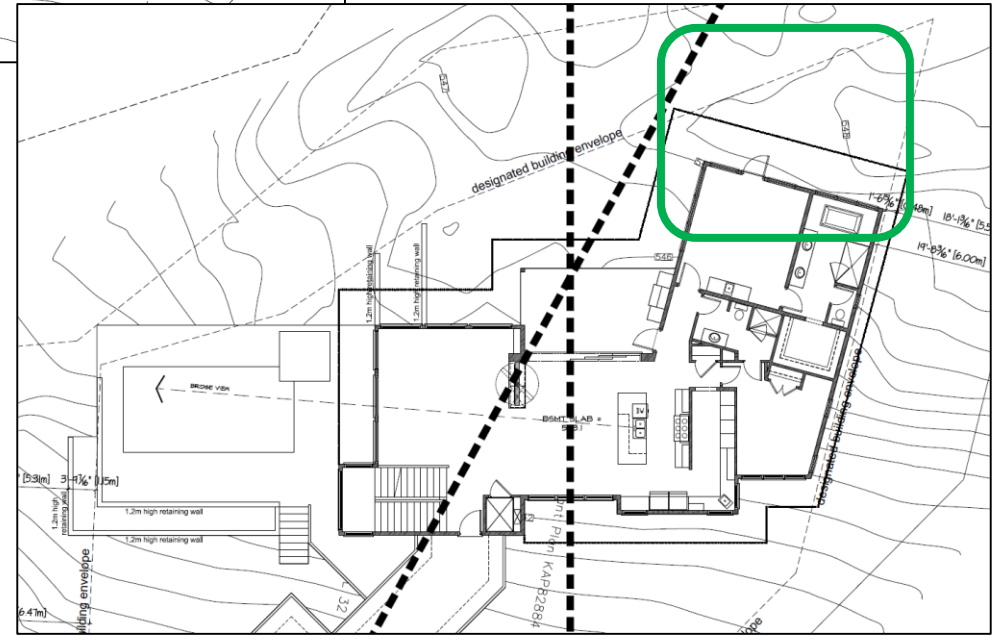
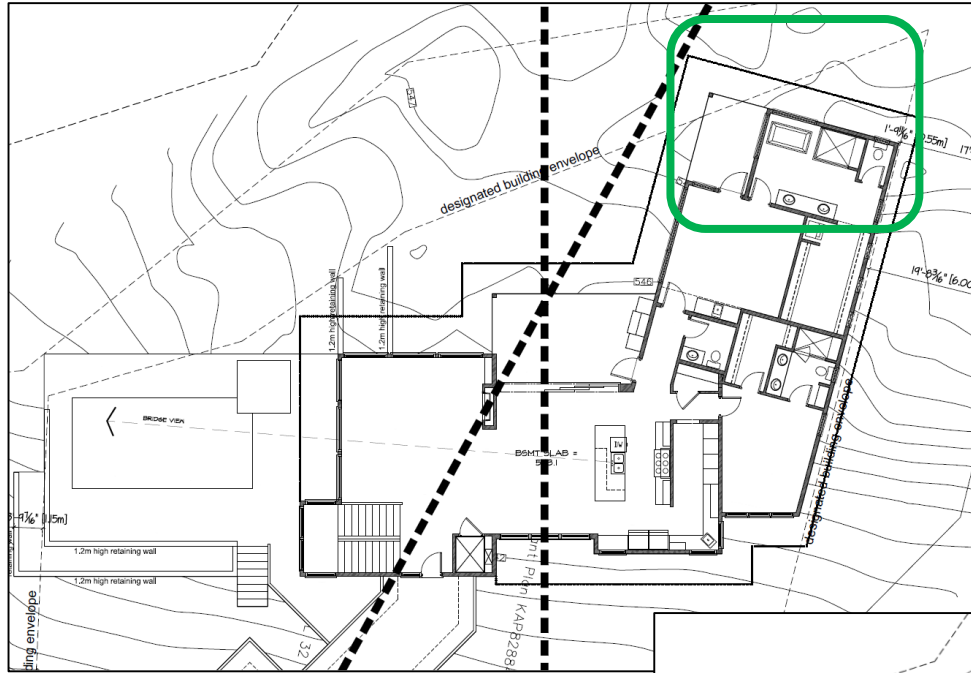
Development Variance Permit request

- The variance requested is to increase the height from 10m permitted to 13.56m proposed.
 - As seen the site has many constraints limiting the footprint.
 - The immediate neighbourhood has examples of homes with 3 storey elements.
 - Previous variance have been granted to vary height in immediate neighbourhood.
- 

Site Plan Difference

Previous plan (left) exceeds building envelope.

New plan (right) is within building envelope, increasing privacy for neighbouring property.





Questions?