

**CITY OF KELOWNA**

**BYLAW NO. 11607**

**Road Closure and Removal of Highway Dedication Bylaw**  
**(Portion of Road Adjacent to 4058 Lakeshore Road)**

**A bylaw pursuant to Section 26 and 40 of the Community Charter to authorize the City to permanently close and remove the highway dedication of a portion of highway Adjacent to 4058 Lakeshore Road.**

---

NOW THEREFORE, the Municipal Council of the City of Kelowna, in open meeting assembled, hereby enacts as follows:

1. That portion of highway attached as Schedule "A" comprising 251.5 m<sup>2</sup> shown in bold black as Closed Road on the Reference Plan prepared by Robert T. Macdonald, B.C.L.S., is hereby stopped up and closed to traffic and the highway dedication removed.
2. The Mayor and City Clerk of the City of Kelowna are hereby authorized to execute such conveyances, titles, survey plans, forms and other documents on behalf of the said City as may be necessary for the purposes aforesaid.

Read a first, second and third time by the Municipal Council this 6<sup>th</sup> day of February, 2023.

Adopted by the Municipal Council of the City of Kelowna this

---

Mayor

---

City Clerk

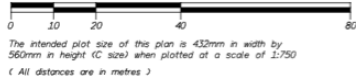
Schedule "A"

REFERENCE PLAN TO ACCOMPANY BYLAW NO. 11607  
(City of Kelowna) TO CLOSE ROAD DEDICATED ON  
PLAN KAP53611, SECTION 1, TOWNSHIP 25,  
OSOYOOS DIVISION YALE DISTRICT

PLAN EPP84608

PURSUANT TO SECTION 120 OF THE LAND TITLE ACT  
AND SECTION 40 OF THE COMMUNITY CHARTER

BCGS 82E.083



LEGEND

- Denotes Standard iron post (Type 5) found
- ⊙ Denotes Non-Standard Post found
- ⊕ Denotes Central Monument found
- NF Denotes nothing found

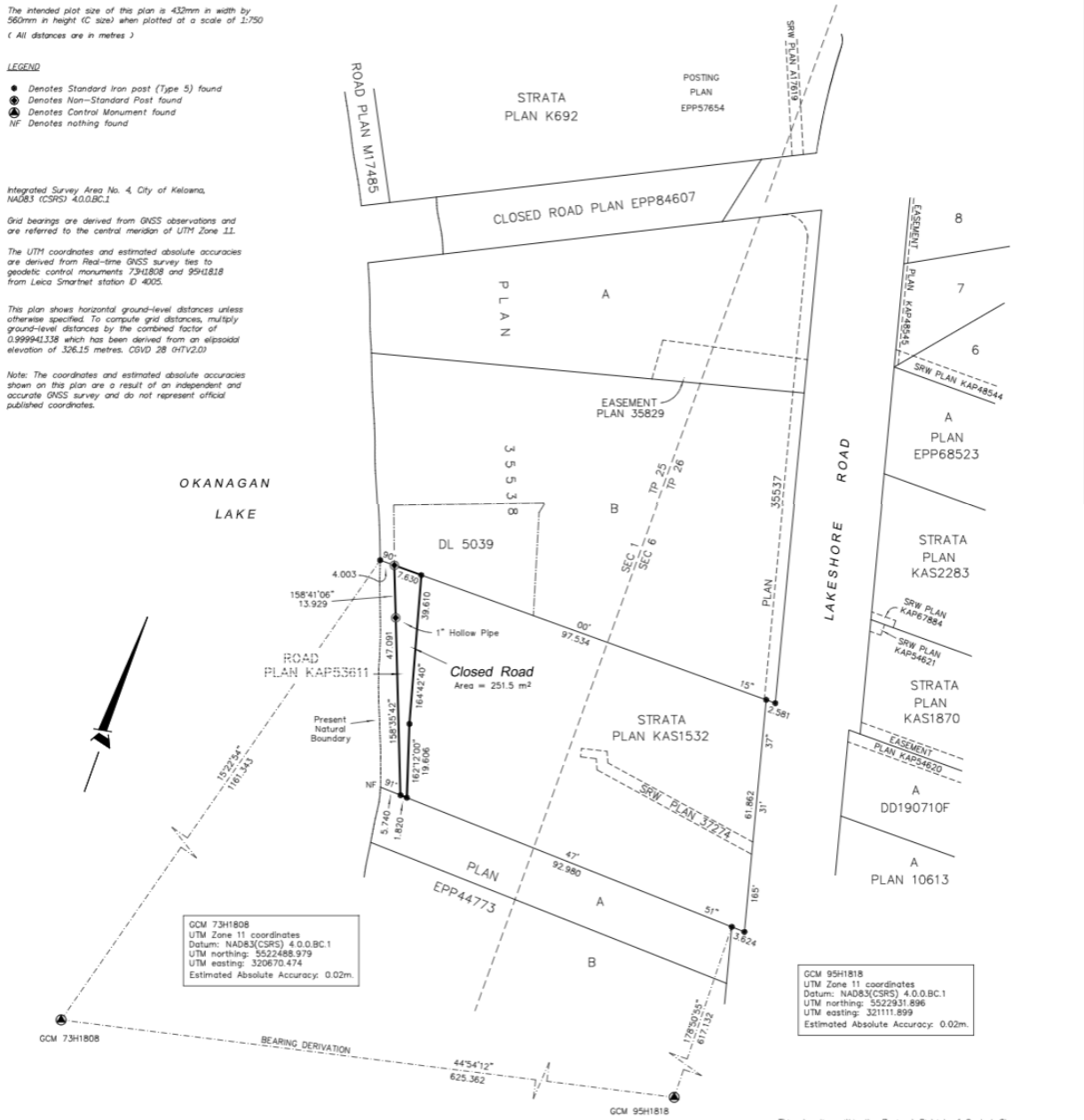
Integrated Survey Area No. 4, City of Kelowna,  
NAD83 (CSRS) 4.0.0.BC.1

Grid bearings are derived from GNSS observations and  
are referred to the central meridian of UTM Zone 11.

The UTM coordinates and estimated absolute accuracies  
are derived from Real-time GNSS survey ties to  
geodetic control monuments 73H1808 and 95H1818  
from Leica Smartnet station 0-4005.

This plan shows horizontal ground-level distances unless  
otherwise specified. To compute grid distances, multiply  
ground-level distances by the combined factor of  
0.999941338 which has been derived from an ellipsoidal  
elevation of 326.15 metres, CGVD 28 (HTV2.0)

Note: The coordinates and estimated absolute accuracies  
shown on this plan are a result of an independent and  
accurate GNSS survey and do not represent official  
published coordinates.



GCM 73H1808  
UTM Zone 11 coordinates  
Datum: NAD83(CSRS) 4.0.0.BC.1  
UTM northing: 5522468.979  
UTM easting: 320670.474  
Estimated Absolute Accuracy: 0.02m.

GCM 95H1818  
UTM Zone 11 coordinates  
Datum: NAD83(CSRS) 4.0.0.BC.1  
UTM northing: 5522931.896  
UTM easting: 321111.899  
Estimated Absolute Accuracy: 0.02m.

**RUNNALLS DENBY**  
british columbia land surveyors  
259A Lawrence Avenue Phone: (250)763-7322  
Kelowna, B.C. Fax: (250)763-4413  
V1Y 6L2 Email: rob@runnallsdenby.com

This plan lies within the Regional District of Central Okanagan.  
The field survey represented by this plan was completed on  
the 7th day of October, 2020.  
Robert T. Macdonald, BCLS 873