

CITY OF KELOWNA

BYLAW NO. 11606

Road Closure and Removal of Highway Dedication Bylaw (Portion of Road Adjacent to 4020 Lakeshore Road)

A bylaw pursuant to Section 26 and 40 of the Community Charter to authorize the City to permanently close and remove the highway dedication of a portion of highway Adjacent to 4020 Lakeshore Road.

NOW THEREFORE, the Municipal Council of the City of Kelowna, in open meeting assembled, hereby enacts as follows:

1. That portion of highway attached as Schedule "A" comprising 1230 m² shown in bold black as Closed Road on the Reference Plan prepared by Robert T. Macdonald, B.C.L.S., is hereby stopped up and closed to traffic and the highway dedication removed.
2. The Mayor and City Clerk of the City of Kelowna are hereby authorized to execute such conveyances, titles, survey plans, forms and other documents on behalf of the said City as may be necessary for the purposes aforesaid.

Read a first, second and third time by the Municipal Council this 6th day of February, 2023.

Adopted by the Municipal Council of the City of Kelowna this

Mayor

City Clerk

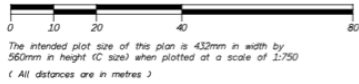
Schedule "A"

REFERENCE PLAN TO ACCOMPANY BYLAW NO. 11606
(City of Kelowna) TO CLOSE ROAD DEDICATED ON
PLAN KAP72198, SECTION 1, TOWNSHIP 25,
OSOYOOS DIVISION YALE DISTRICT

PLAN EPP84607

PURSUANT TO SECTION 120 OF THE LAND TITLE ACT
AND SECTION 40 OF THE COMMUNITY CHARTER

BCGS 82E.083



The intended plot size of this plan is 432mm in width by
560mm in height (C size) when plotted at a scale of 1:750
(All distances are in metres)

LEGEND

- Denotes Standard Iron post (Type 5) found
- Denotes Standard Iron post (Type 5) placed
- Denotes Lead Plug (Type 3) found
- ⊙ Denotes Non-Standard Post found
- ▲ Denotes Control Monument found
- NF Denotes nothing found

Integrated Survey Area No. 4, City of Kelowna,
NA683 (CSRS) 4.0.BC.1

Grid bearings are derived from GNSS observations and
are referred to the central meridian of UTM Zone 11.

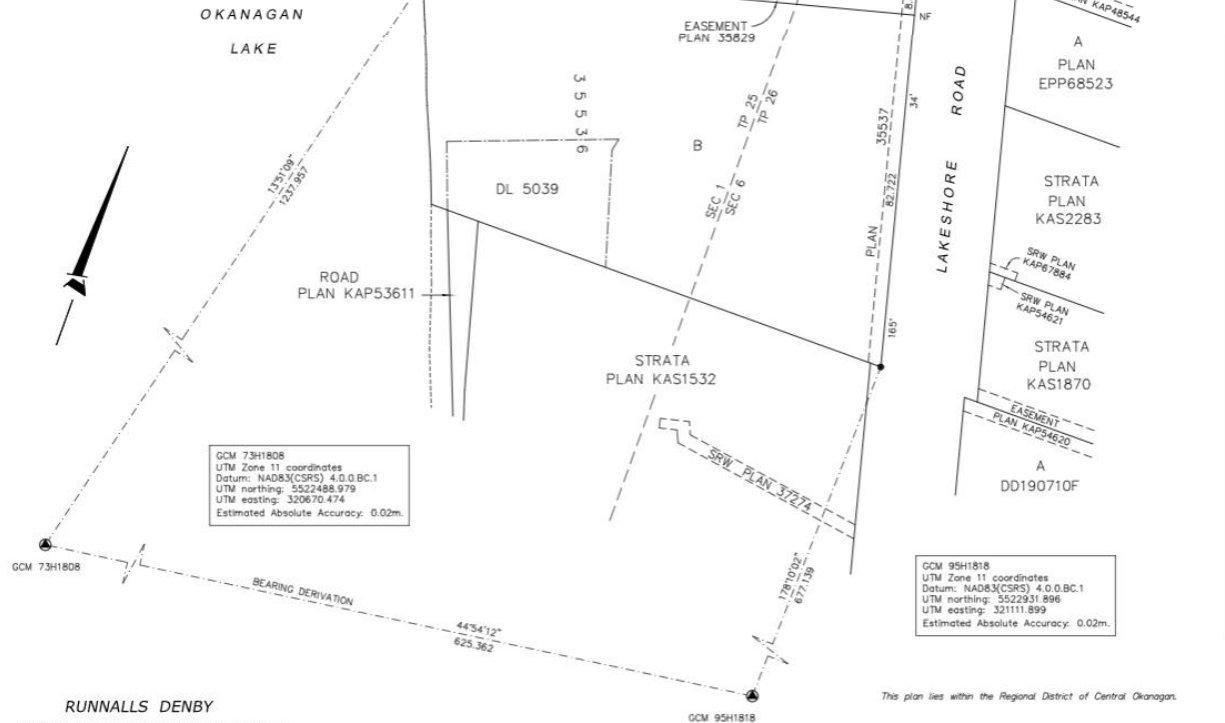
The UTM coordinates and estimated absolute accuracies
are derived from Real-time GNSS survey ties to
geodetic control monuments 7341808 and 9541818
from Leica Smartnet station ID 4005.

This plan shows horizontal ground-level distances unless
otherwise specified. To compute grid distances, multiply
ground-level distances by the combined factor of
0.999941338 which has been derived from an ellipsoidal
elevation of 326.15 metres. CGVD 28 (HTV2.0)

Note: The coordinates and estimated absolute accuracies
shown on this plan are a result of an independent and
accurate GNSS survey and do not represent official
published coordinates.

Note: Road dedicated by Plan KAP72198 appears to
have been dedicated by Plan A977.

OKANAGAN
LAKE



GCM 7341808
UTM Zone 11 coordinates
Datum: NAD83(CSRS) 4.0.BC.1
UTM northing: 5522488.979
UTM easting: 320670.474
Estimated Absolute Accuracy: 0.02m.

GCM 9541818
UTM Zone 11 coordinates
Datum: NAD83(CSRS) 4.0.BC.1
UTM northing: 5522931.896
UTM easting: 321111.899
Estimated Absolute Accuracy: 0.02m.

RUNNALLS DENBY
british columbia land surveyors

259A Lawrence Avenue Phone: (250)763-7322
Kelowna, B.C. Fax: (250)763-4413
V1Y 6L2 Email: rob@runnallsdenby.com

DWG. No: 15184 CLOSED ROAD 1 FILE: 15184

This plan lies within the Regional District of Central Okanagan.

The field survey represented by this plan was completed on
the 7th day of October, 2020.
Robert T. Macdonald, BCLS 873