

SCHEDULE "C"

REFERENCE PLAN TO ACCOMPANY BYLAW NO. 11609 (City of Kelowna) TO CLOSE ROAD DEDICATED ON PLAN M17485, SECTION 1, TOWNSHIP 25, OSOYOOS DIVISION YALE DISTRICT

PLAN EPP84609

PURSUANT TO SECTION 120 OF THE LAND TITLE ACT
AND SECTION 40 OF THE COMMUNITY CHARTER

BCGS 82E.083



The intended plot size of this plan is 560mm in width by
432mm in height (C size) when plotted at a scale of 1:750
(All distances are in metres)

LEGEND

- Denotes Standard Iron post (Type 5) found
- Denotes Standard Iron post (Type 5) placed
- Denotes Lead Plug (Type 3) found
- ▲ Denotes Control Monument found
- NF Denotes nothing found

Integrated Survey Area No. 4, City of Kelowna,
NAD83 (CSRS) 4.0.0.BC.1

Grid bearings are derived from GNSS observations and
are referred to the central meridian of UTM Zone 11.

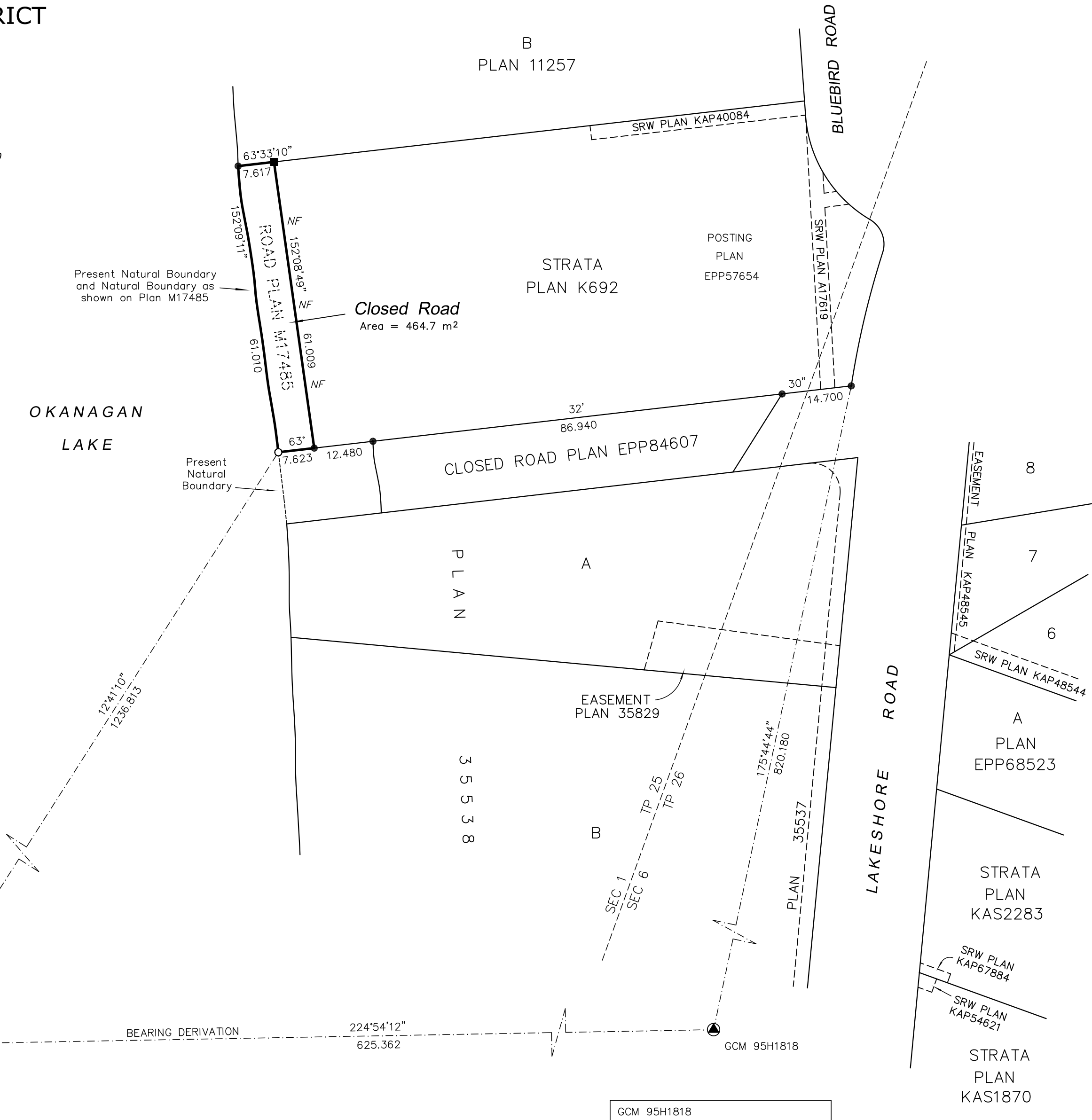
The UTM coordinates and estimated absolute accuracies
are derived from Real-time GNSS survey ties to
geodetic control monuments 73H1808 and 95H1818
from Leica Smartnet station ID 4005.

This plan shows horizontal ground-level distances unless
otherwise specified. To compute grid distances, multiply
ground-level distances by the combined factor of
0.999941338 which has been derived from an ellipsoidal
elevation of 326.15 metres. CGVD 28 (HTV2.0)

Note: The coordinates and estimated absolute accuracies
shown on this plan are a result of an independent and
accurate GNSS survey and do not represent official
published coordinates.

GCM 73H1808
UTM Zone 11 coordinates
Datum: NAD83(CSRS) 4.0.0.BC.1
UTM northing: 5522488.979
UTM easting: 320670.474
Estimated Absolute Accuracy: 0.02m.

GCM 95H1818
UTM Zone 11 coordinates
Datum: NAD83(CSRS) 4.0.0.BC.1
UTM northing: 5522931.896
UTM easting: 321111.899
Estimated Absolute Accuracy: 0.02m.



RUNNALLS DENBY
british columbia land surveyors

259A Lawrence Avenue Kelowna, B.C. V1Y 6L2
Phone: (250)763-7322 Fax: (250)763-4413 Email: rob@runnallsdenby.com

DWG. No.: 15184 CLOSED ROAD 3 FILE: 15184

This plan lies within the Regional District of Central Okanagan.

The field survey represented by this plan was completed on
the 7th day of October, 2020.
Robert T. Macdonald, BCLS 873