

# CITY OF KELOWNA

## BYLAW NO. 11606

### Road Closure and Removal of Highway Dedication Bylaw (Portion of Road Adjacent to 4020 Lakeshore Road)

**A bylaw pursuant to Section 26 and 40 of the Community Charter to authorize the City to permanently close and remove the highway dedication of a portion of highway Adjacent to 4020 Lakeshore Road.**

---

NOW THEREFORE, the Municipal Council of the City of Kelowna, in open meeting assembled, hereby enacts as follows:

1. That portion of highway attached as Schedule "A" comprising 1230 m<sup>2</sup> shown in bold black as Closed Road on the Reference Plan prepared by Robert T. Macdonald, B.C.L.S., is hereby stopped up and closed to traffic and the highway dedication removed.
2. The Mayor and City Clerk of the City of Kelowna are hereby authorized to execute such conveyances, titles, survey plans, forms and other documents on behalf of the said City as may be necessary for the purposes aforesaid.

Read a first, second and third time by the Municipal Council this

Adopted by the Municipal Council of the City of Kelowna this

---

Mayor

---

City Clerk

Schedule "A"

REFERENCE PLAN TO ACCOMPANY BYLAW NO. 11606  
(City of Kelowna) TO CLOSE ROAD DEDICATED ON  
PLAN KAP72198, SECTION 1, TOWNSHIP 25,  
OSOYOOS DIVISION YALE DISTRICT

PLAN EPP84607

PURSUANT TO SECTION 120 OF THE LAND TITLE ACT  
AND SECTION 40 OF THE COMMUNITY CHARTER

BCGS 82E.083



The intended plot size of this plan is 432mm in width by 560mm in height (C size) when plotted at a scale of 1:750  
( All distances are in metres )

LEGEND

- Denotes Standard Iron post (Type 5) found
- Denotes Standard Iron post (Type 5) placed
- Denotes Lead Plug (Type 3) found
- ⊙ Denotes Non-Standard Post found
- ▲ Denotes Control Monument found
- NF Denotes nothing found

Integrated Survey Area No. 4, City of Kelowna,  
NAD83 (CSRS) 4.0.BC.1

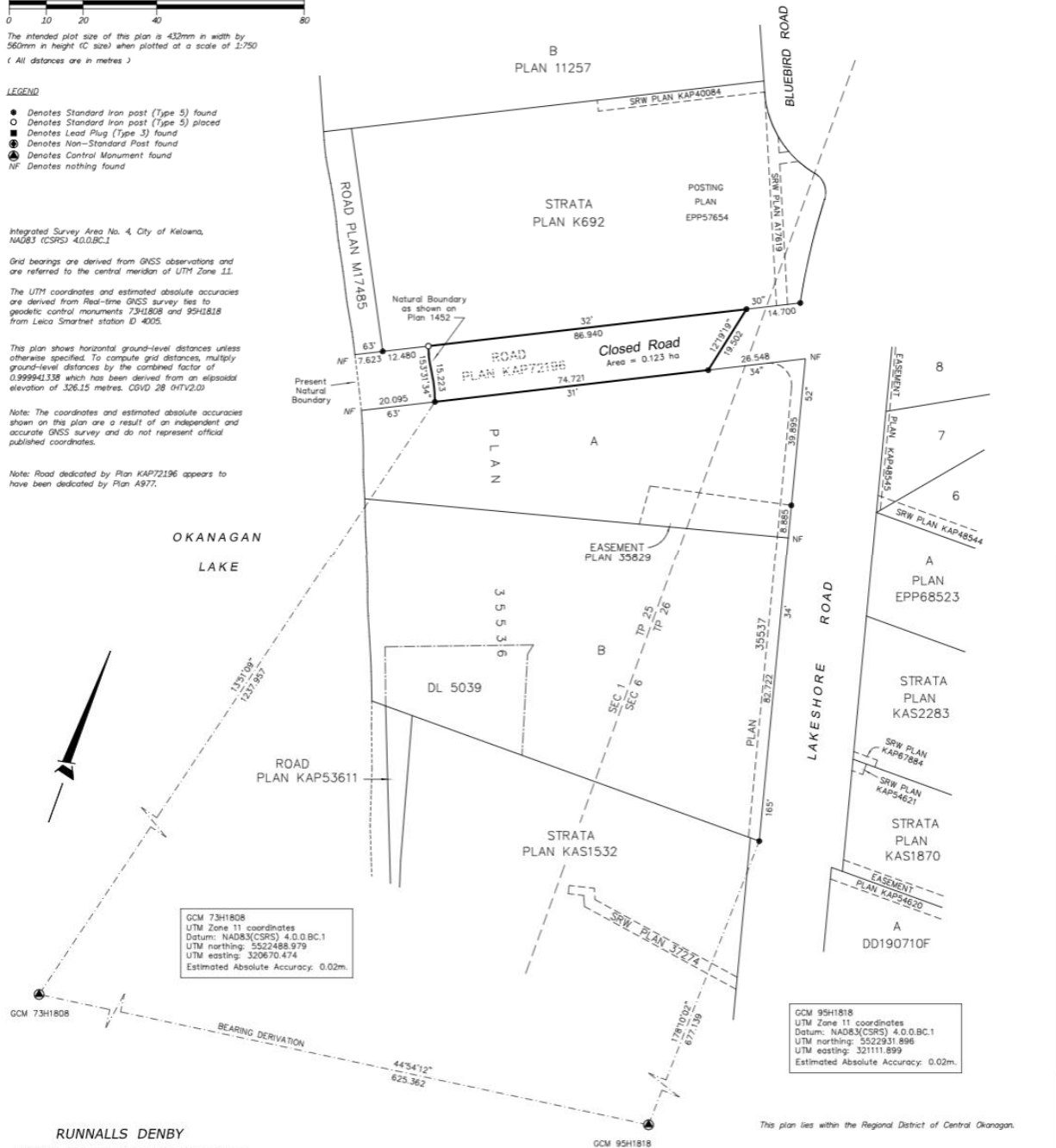
Grid bearings are derived from GNSS observations and are referred to the central meridian of UTM Zone 11.

The UTM coordinates and estimated absolute accuracies are derived from Real-time GNSS survey ties to geodetic control monuments 7341808 and 9541818 from Leica Smartnet station ID 4005.

This plan shows horizontal ground-level distances unless otherwise specified. To compute grid distances, multiply ground-level distances by the combined factor of 0.999941338 which has been derived from an ellipsoidal elevation of 326.15 metres. CGVD 28 (HTV2.0)

Note: The coordinates and estimated absolute accuracies shown on this plan are a result of an independent and accurate GNSS survey and do not represent official published coordinates.

Note: Road dedicated by Plan KAP72198 appears to have been dedicated by Plan A977.



GCM 7341808  
UTM Zone 11 coordinates  
Datum: NAD83(CSRS) 4.0.BC.1  
UTM northing: 5522488.979  
UTM easting: 320670.474  
Estimated Absolute Accuracy: 0.02m.

GCM 9541818  
UTM Zone 11 coordinates  
Datum: NAD83(CSRS) 4.0.BC.1  
UTM northing: 5522931.896  
UTM easting: 321111.899  
Estimated Absolute Accuracy: 0.02m.

**RUNNALLS DENBY**  
british columbia land surveyors  
259A Lawrence Avenue Kelowna, B.C. V1Y 6L2  
Phone: (250)763-7322 Fax: (250)763-4413 Email: rob@runnallsdenby.com  
FILE: 15184

This plan lies within the Regional District of Central Okanagan.  
The field survey represented by this plan was completed on the 7th day of October, 2020.  
Robert T. Macdonald, BCLS 873