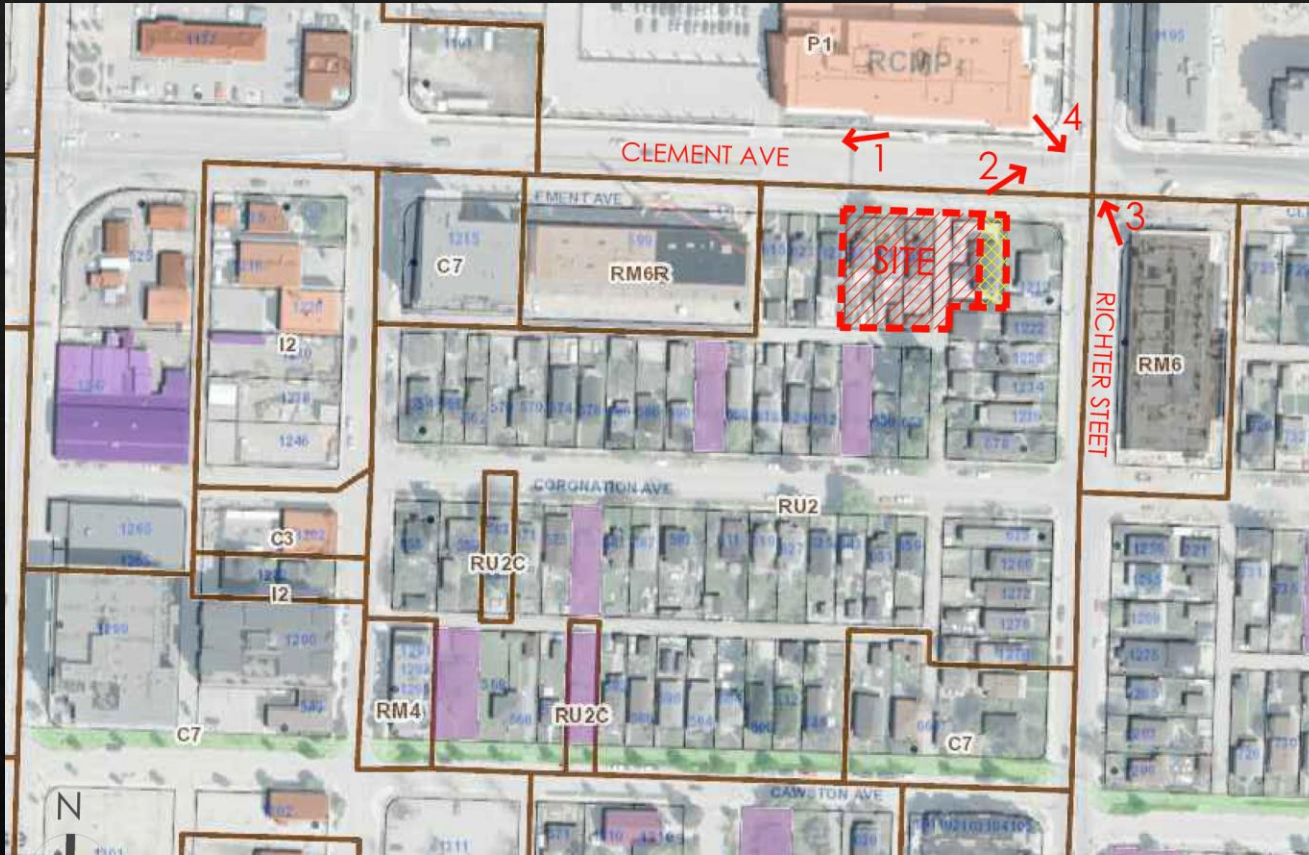




Savoy on Clement Multifamily Development

Development Permit & Development Variance Permit

677, 657, 647 & 631 Clement Ave., Kelowna, BC



Kelowna's north end; a melting pot of industrial, commercial, cultural, and a growing residential presence

66 residential condominium units

- (49) 1 bedroom (incl. + den options) condos
- (11) 2 bedroom (incl. + den options) condos
- (6) 2 bedroom ground oriented townhomes

6 storeys

- secure underground parking (partially buried)
- abundant landscaping at street scape & amenity podium
- bonus secure biking storage (50 total)



“The architecture is sensitive to it’s built context and the people that inhabit it.”

- pedestrian scaled deign (ground-oriented townhomes)

-sensitive step backs with a defined base, mid and top section

-modern form with traditional materials consistent with surrounding context

- abundant private and public outdoor spaces



5th and 6th storey step back variance requested along portion of eastern wall abutting adjacent future development

-maintain density and feasibility of project while sacrificing a half lot to the future corner development

-stacking of density, rather than growing footprint allows for greater amount of landscaped private and public amenity areas

-considered material treatment and form of this portion of wall adds prominence to the lobby entry/feature wall and bookends this mid block site for an abutting future corner development



