

# 10-Year Capital Plan Overview

November 28<sup>th</sup>, 2022

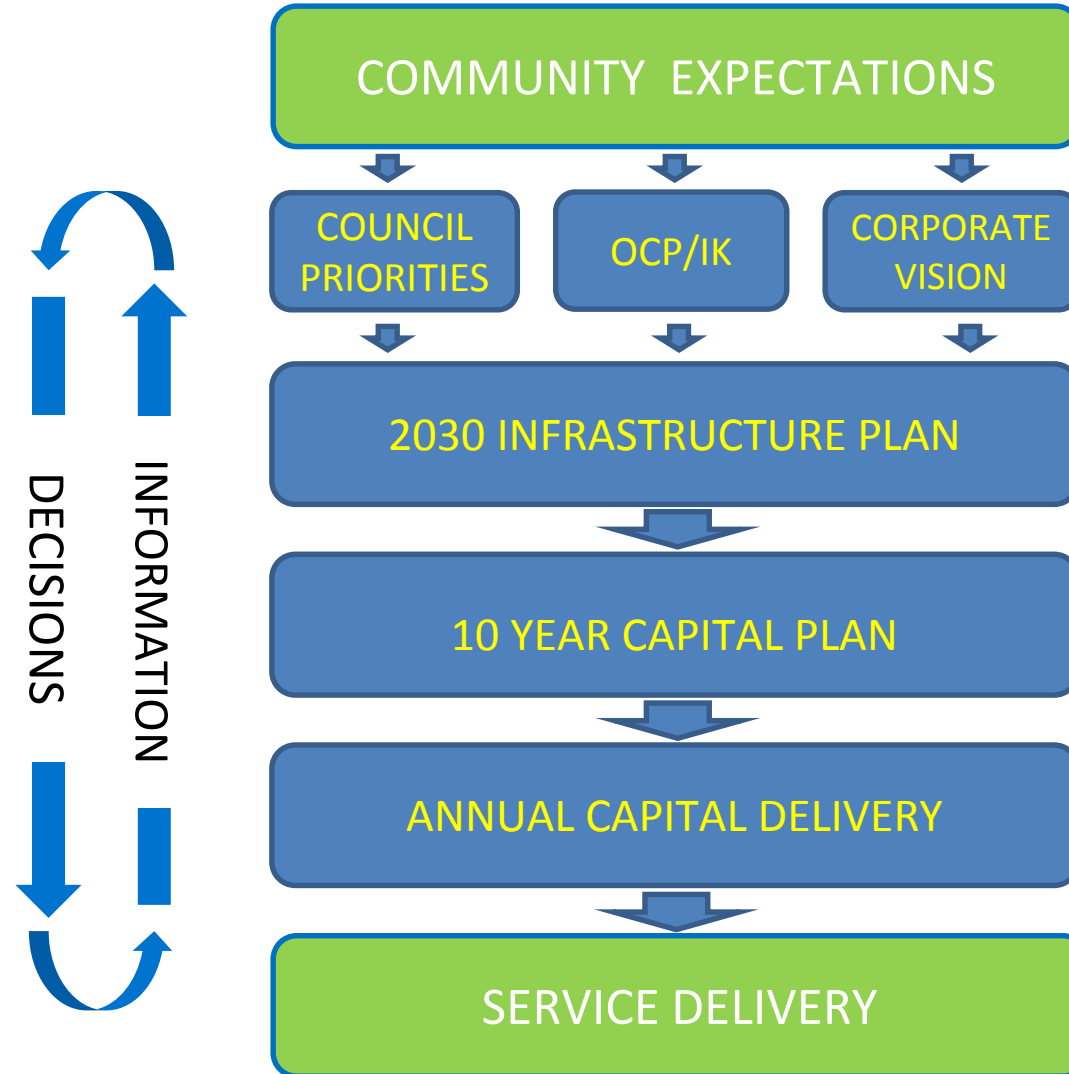


# Meeting Agenda

- ▶ Part 1 – Capital Plan Overview
  - ▶ How are the plans linked?
  - ▶ What is in the Capital Plan?
- ▶ Part 2 – Next Capital Planning Cycle
  - ▶ Capital Planning Process
  - ▶ Council's involvement
  - ▶ Where can I find the Plan?

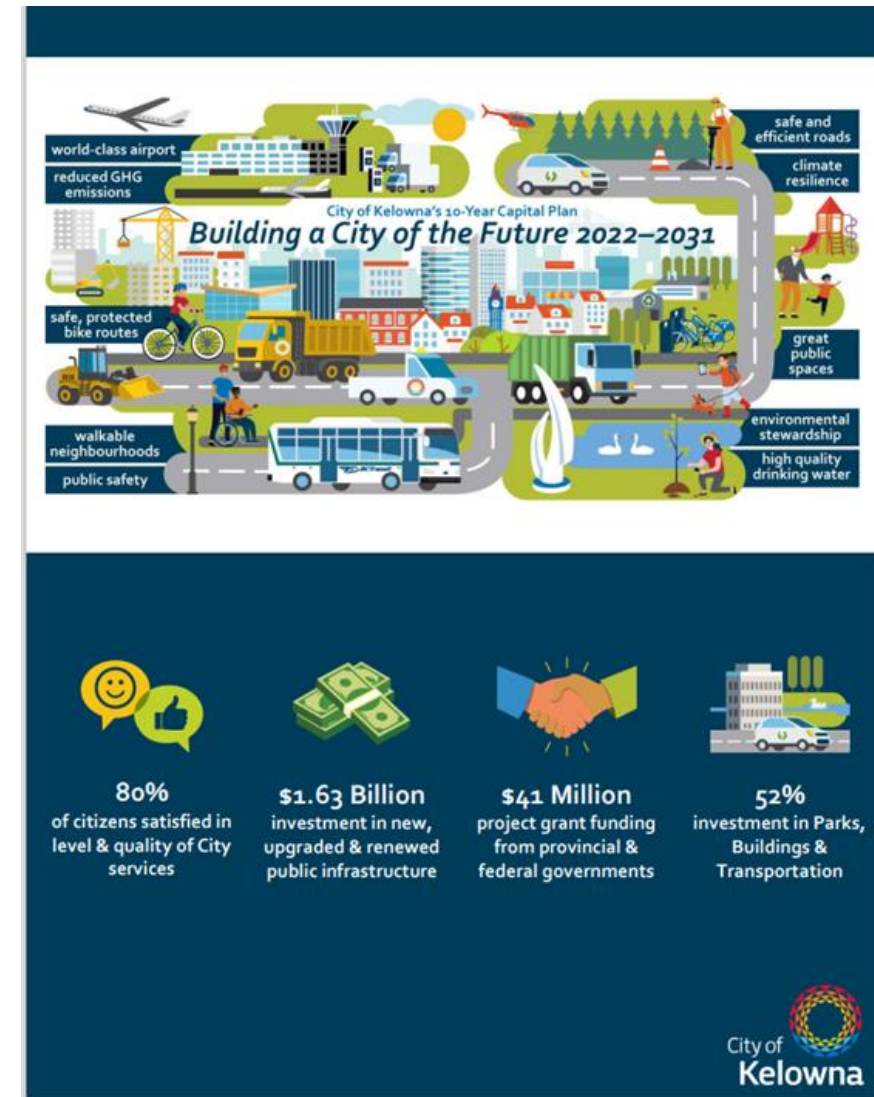


# Capital Planning Continuum



# 10-Year Capital Plan

- ▶ Details capital investment required to support services for the next 10-years,
- ▶ Includes all of the City's 12 capital cost centres,
- ▶ Provides financial strategy for Priority 1 projects,
- ▶ Identifies projects that do not have adequate funding (Priority 2),
- ▶ Forecasts operating and maintenance costs,
- ▶ Tracks Infrastructure Deficit.



# 10-Year Infrastructure Investment

- ▶ Total: \$1.75 billion
  - ▶ Renewal 31%
  - ▶ New/Growth 69%
- ▶ Funding
  - ▶ 40% external funding (DCCs, grant, CWF, partnerships),
  - ▶ 60% City sources (taxation, Reserves, Borrowing, Utilities).

Cost Centre	This Plan (\$ million)	% Total
Airport	\$355*	20%
Transportation	\$307	18%
Buildings	\$290	17%
Parks	\$248	14%
Wastewater	\$197	11%
Water	\$118	7%
Solid Waste	\$61	3%
Vehicle or Mobile Equipment	\$55	3%
Real Estate and Parking	\$46	3%
Storm Drainage	\$45	3%
Fire	\$14	1%
Information Services	\$12	1%
<b>Total</b>	<b>\$1,750</b>	

\* Airport capital updated to align with most recent budget forecast.

# Kelowna International Airport

- ▶ Investment
  - ▶ \$355 million (20%)\*
- ▶ Big Projects and Programs
  - ▶ Terminal expansion
  - ▶ Airside pavement
  - ▶ Hotel
  - ▶ East Lands development
  - ▶ Combined operations building
  - ▶ Airside equipment



*Continuing to be  
Your Link to the World.*

\*Aligned with 2023 Proposed Budget, changes have been made as a part of the 2023 Budgeting process



# Transportation

- ▶ Investment
  - ▶ \$307 million (18%)
- ▶ Big Projects & Programs (P1)
  - ▶ Active transportation & transit
  - ▶ Road improvements for growth
  - ▶ Road and bridge renewal
  - ▶ Sidewalk & Bicycle expansion
  - ▶ Safety & Traffic Control



*Making it easier for people to get around  
by vehicle, transit, cycling & walking.*

# Buildings

- ▶ Investment
  - ▶ \$290 million (17%)
- ▶ Big projects & programs (P1)
  - ▶ Kelowna Community Campus
  - ▶ CNC Expansion
  - ▶ North Glenmore Firehall
  - ▶ Park Washrooms
  - ▶ Mission Activity Centre
  - ▶ Buildings Renewal



*Expanding recreational, cultural,  
& protective services facilities  
to support a growing community.*



# Parks

- ▶ Investment
  - ▶ \$248 million (14%)
- ▶ Big projects and programs (P1)
  - ▶ DCC parkland acquisition
  - ▶ Neighbourhood Parks
  - ▶ Community Parks
  - ▶ Recreation Parks
  - ▶ City-wide Parks
  - ▶ Linear & Natural Area Parks
  - ▶ Parks Renewal



*Creating vibrant, animated spaces for the community to connect, enjoy & experience.*

# Wastewater

- ▶ Investment
  - ▶ \$197 million (11%)
- ▶ Big Projects & Programs (P1)
  - ▶ Infrastructure to support growth
  - ▶ Wastewater infrastructure Renewal
  - ▶ Biosolids Digestion
  - ▶ Septic removal projects



*Ensuring environmental stewardship,  
community preparedness, & resiliency while  
meeting regulatory requirements.*

# Water

- ▶ Investment
  - ▶ \$118 million (7%)
- ▶ Big Projects & Programs (P1)
  - ▶ Water transmission & storage projects to support growth
  - ▶ Renewal of water infrastructure
  - ▶ Regulatory upgrades
  - ▶ Installation of water meters



*Delivering high-quality drinking water  
& reliable irrigation water to  
all City customers.*



# Solid Waste

- ▶ Investment
  - ▶ \$61 million (3%)
- ▶ Big Projects and Programs (P1)
  - ▶ Expansion of the landfill footprint
  - ▶ Stockpiles and Reprocessing Areas
  - ▶ New stormwater management program



*Operating a progressive, environmentally-aware site to manage, reduce, & divert waste that considers today's regional needs & future demands.*

# Storm Drainage

- ▶ Investment
  - ▶ \$45 million (3%)
- ▶ Big Projects and Programs (P1)
  - ▶ Mill Creek Flood Protection
  - ▶ Renewal of drainage infrastructure



*Utilizing natural & engineered solutions to improve resiliency, flood mitigation, & water quality in a changing climate.*

# Real Estate and Parking

- ▶ Investment
  - ▶ \$46 million (3%)
- ▶ Big Projects and Programs (P1)
  - ▶ General Land Acquisition
  - ▶ Parking Infrastructure
  - ▶ Strategic Land Redevelopment



*Investing in strategic land acquisition & providing state-of-the-art, well-maintained parking facilities.*



# Vehicles and Equipment

- ▶ Investment
  - ▶ \$55 million (3%)
- ▶ Big Projects & Programs (P1)
  - ▶ Vehicle & Equipment Renewal
  - ▶ Additional vehicles to support growth



*Maintaining a reliable, sustainable fleet while Going Green & reducing GHGs.*

# Information Services

- ▶ Investment
  - ▶ \$12 million (1%)
- ▶ Big Projects & Programs (P1)
  - ▶ Front Office Equipment
  - ▶ Server and Data Storage
  - ▶ Major System Projects
  - ▶ Communications Network & Fibre Optics



*Transforming into a digital-first City  
by supporting hardware, software, &  
system infrastructure.*

# Fire

- ▶ Investment
  - ▶ \$14 million (1%)
- ▶ Big Projects & Programs (P1)
  - ▶ New vehicles and equipment to support growth
  - ▶ Vehicle/Equipment Renewal
  - ▶ Communication Systems



*Responding to calls with well-trained personnel equipped with the necessary equipment & tools when the community needs it the most.*



# Infrastructure Deficit

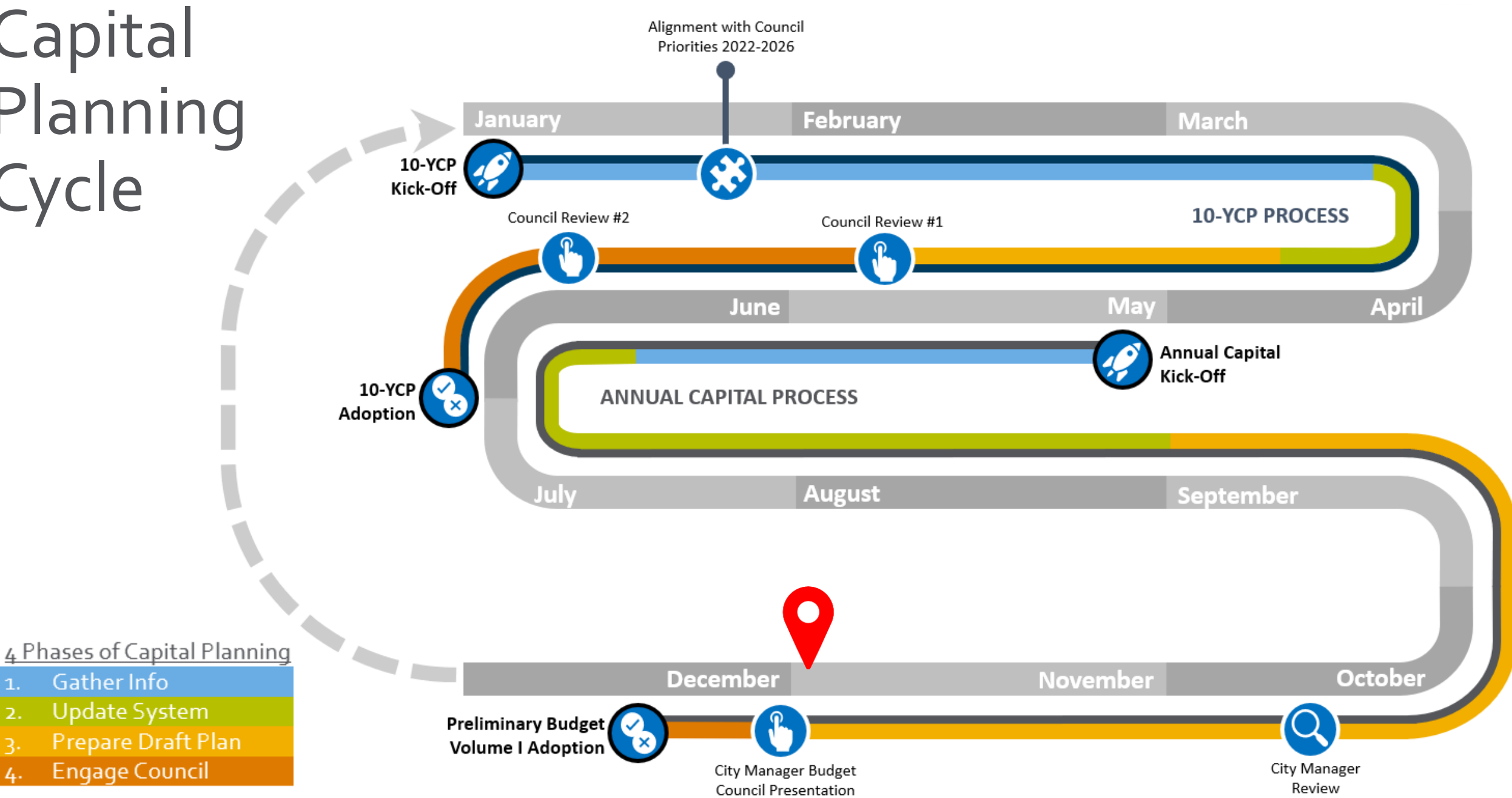
- ▶ Unfunded portion of P2 projects
  - ▶ Infrastructure Deficit = P2's less confirmed funding
    - ▶ \$744 M - \$134 M = \$610 M

	2018	2019	2020	2021	2022
<b>ID (\$millions)</b>	\$463	\$396	\$388	\$430	\$610
<b>ID % of funded capital</b>	44%	31%	29%	29%	37%

# Part Two – Next Capital Planning Cycle

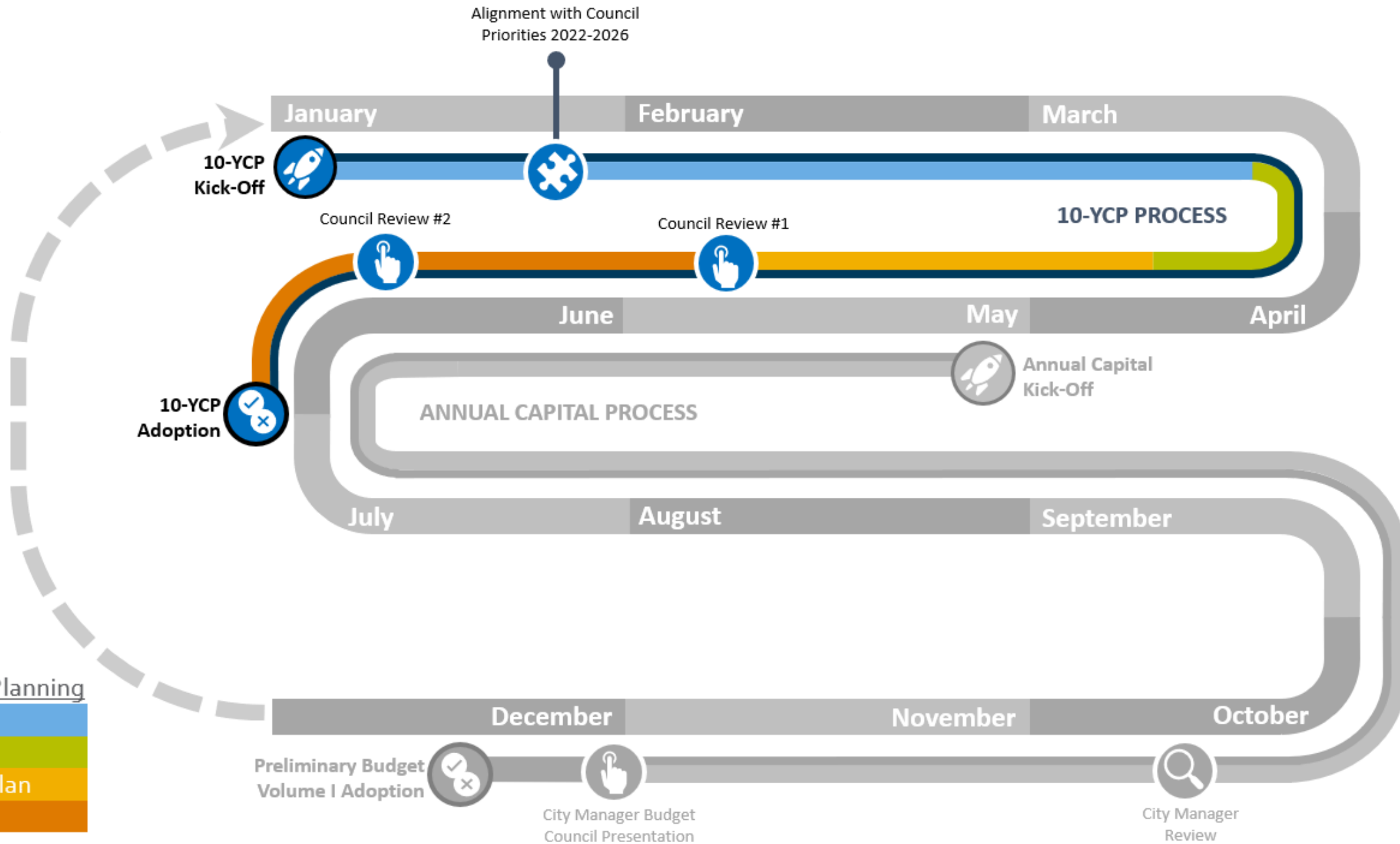
- ▶ Capital Planning Process Overview
- ▶ Council's involvement

# Capital Planning Cycle

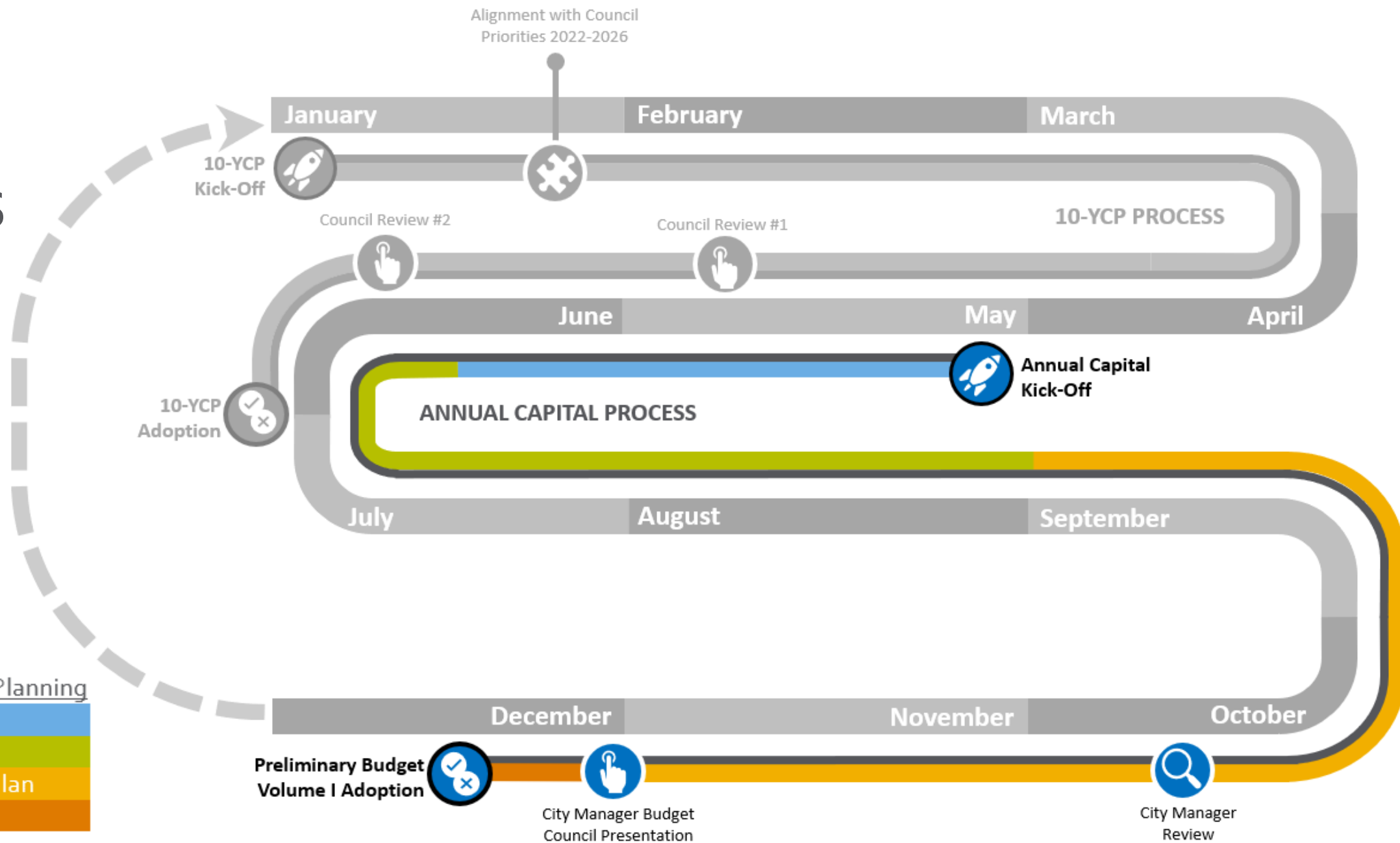




# 10-YCP Process



# Annual Capital Process



## 4 Phases of Capital Planning

1. Gather Info
2. Update System
3. Prepare Draft Plan
4. Engage Council

# Where to find 10-Year Capital Plan?

City website

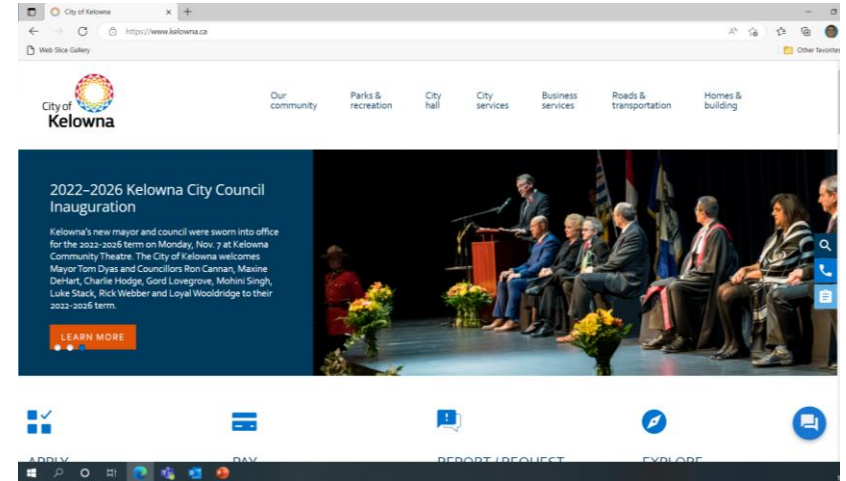
kelowna.ca

↳ City Hall

↳ Budget

↳ Infrastructure Planning

↳ [10-Year Capital Plan](#)



# 6 APPENDIX

Click on the cost centre names below to view its detailed financials.

 <p><a href="#">300-Real Estate &amp; Parking</a></p>	 <p><a href="#">308-Information Services</a></p>
 <p><a href="#">301-Buildings</a></p>	 <p><a href="#">310-Vehicles</a></p>
 <p><a href="#">302-Parks</a></p>	 <p><a href="#">311-Fire</a></p>
 <p><a href="#">304-Transportation</a></p>	 <p><a href="#">312-Airport</a></p>
 <p><a href="#">305-Solid Waste</a></p>	 <p><a href="#">313-Water</a></p>
 <p><a href="#">306-Storm Drainage</a></p>	 <p><a href="#">314-Wastewater</a></p>



# Compared to the Previous Plan

	Total P <sub>1</sub> & P <sub>2</sub> projects	611
✓	Completed or In-Progress	39
★	New	53
⊗	Cancelled or Removed	31
⊘	No changes	48
↑↑	OCP/TMP/20-YSP/MP	226
\$\$\$/-\$\$\$	+/- \$5mil	69

# Where to find 10-Year Capital Plan System?

## Internal website

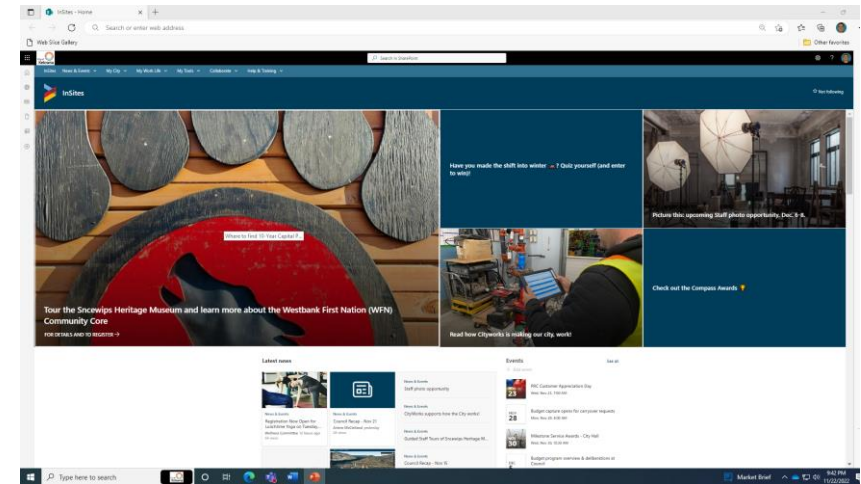
InSites

↳ My Tools

↳ Systems

↳ Public Works

↳ [10-Year Capital Plan \(Council Approved\)](#)



\*InSites – only available to Council and Staff



*Questions?*

For more information, visit [kelowna.ca](http://kelowna.ca).