

CITY OF KELOWNA

BYLAW NO. 12390

**Road Closure and Removal of Highway Dedication Bylaw
(Portion of Road Adjacent to 657 Clement Ave)**

A bylaw pursuant to Section 40 of the Community Charter to authorize the City to permanently close and remove the highway dedication of a portion of Road Adjacent to 657 Clement Ave

NOW THEREFORE, the Municipal Council of the City of Kelowna, in open meeting assembled, hereby enacts as follows:

1. That portion of highway attached as Schedule "A" comprising 186.8 m² shown in bold black as Road to be Closed on the Reference Plan prepared by Robert T. Macdonald, B.C.L.S., is hereby stopped up and closed to traffic and the highway dedication removed.
2. The Mayor and City Clerk of the City of Kelowna are hereby authorized to execute such conveyances, titles, survey plans, forms and other documents on behalf of the said City as may be necessary for the purposes aforesaid.

Read a first, second and third time by the Municipal Council this 27th day of June, 2022.

Adopted by the Municipal Council of the City of Kelowna this

Mayor

City Clerk

Bylaw No. 12390 - Page 2
Schedule "A"

REFERENCE PLAN TO ACCOMPANY BYLAW NO. 12390
(City of Kelowna) TO CLOSE PART OF ROAD DEDICATED
ON PLAN 1037, DISTRICT LOT 139, OSOYOOS
DIVISION YALE DISTRICT

PLAN EPP121800

PURSUANT TO SECTION 120 OF THE LAND TITLE ACT AND
SECTION 40 OF THE COMMUNITY CHARTER.

BCGS 82E.083



The intended plot size of this plan is 432mm in width by
560mm in height (C size) when plotted at a scale of 1:500
(All distances are in metres)

GCM 6459
UTM Zone 11 coordinates
Datum: NAD83(CSRS) 4.0.0.BC.1
UTM northing: 5529989.762
UTM easting: 320920.821
Estimated Absolute Accuracy
Achieved: 0.02m.

GCM 6457
UTM Zone 11 coordinates
Datum: NAD83(CSRS) 4.0.0.BC.1
UTM northing: 5529977.118
UTM easting: 321282.207
Estimated Absolute Accuracy
Achieved: 0.02m.

LEGEND

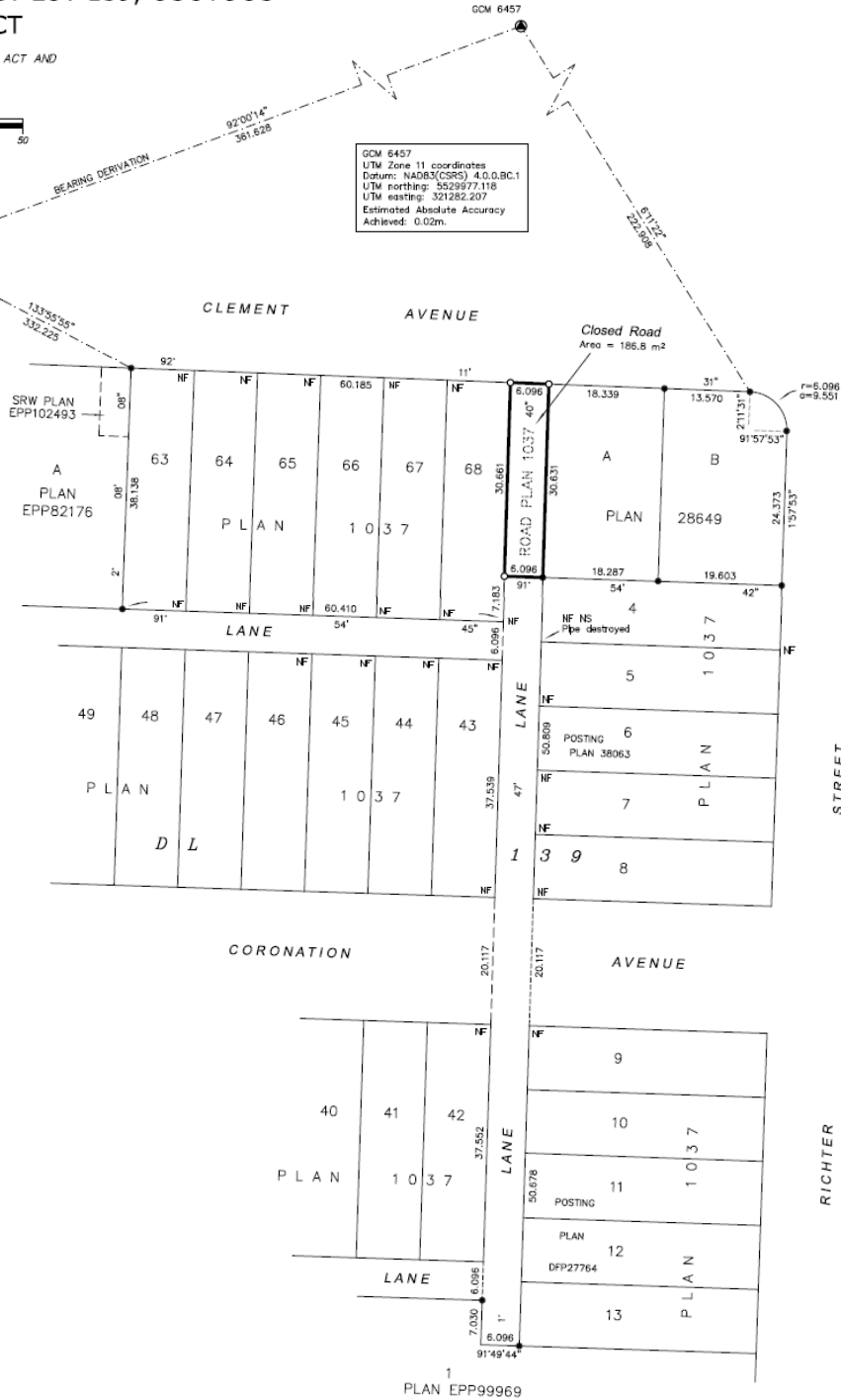
- Denotes Standard Iron post (Type 5) found
- Denotes Standard Iron post (Type 5) placed
- ⊙ Denotes Control Monument found
- NF Denotes nothing found

Integrated Survey Area No. 4, City of Kelowna,
NAD83 (CSRS) 4.0.0.BC.1

Grid bearings are derived from GNSS observations and
are referred to the central meridian of UTM Zone 11.

The UTM coordinates and estimated absolute accuracies
achieved are derived from Real-time GNSS survey ties to
geodetic control monuments 6457 and 6459 from
Leica Smartnet station ID 0002.

This plan shows horizontal ground-level distances unless
otherwise specified. To compute grid distances, multiply
ground-level distances by the combined factor of
0.9999417 which has been derived from geodetic
control monuments 6457 and 6459.
COVID 28 (HY2.0)



RUNNALLS DENBY
british columbia land surveyors

259A Lawrence Avenue Phone: (250)763-7322
Kelowna, B.C. Fax: (250)763-4413
V1Y 6L2 Email: rdb@runnallsdenby.com

DWG. No.: 19950 CLOSED ROAD FILE: 15950

This plan lies within the Regional District of Central Okanagan.

The field survey represented by this plan was completed on
the 13th day of June, 2022.

Robert T. Macdonald, BCLS 873