



City of
Kelowna

North End Plan Community Needs Workshop

August, 2022

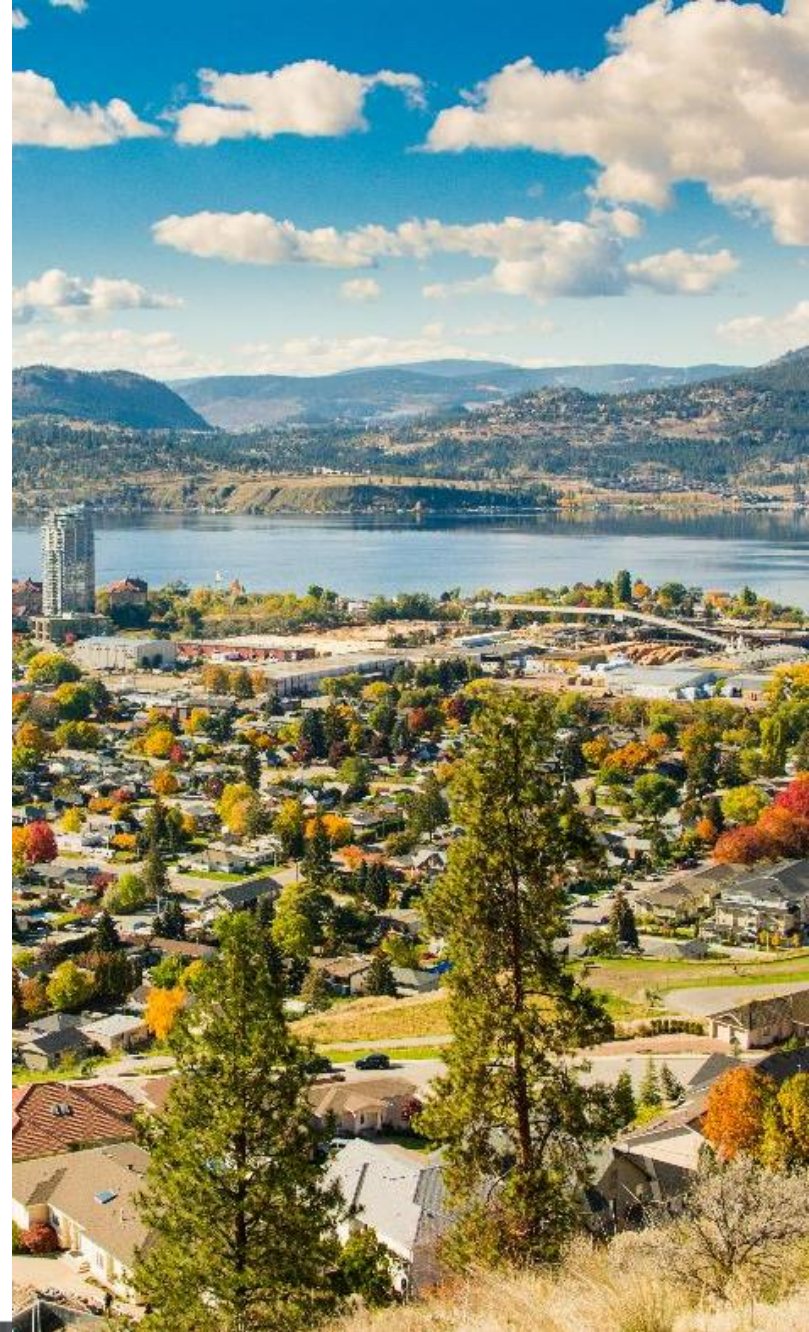
Purpose

- ▶ To discuss the identification of community needs in the NEP process



Background

- ▶ North End Plan (NEP) launched July 12, 2021
- ▶ NEP intended to guide and manage the evolution of the North End over the next 20 years+
 - ▶ Land use mix and housing
 - ▶ Heritage
 - ▶ Transportation network
 - ▶ Utility servicing
 - ▶ Parks, public spaces
 - ▶ Community needs



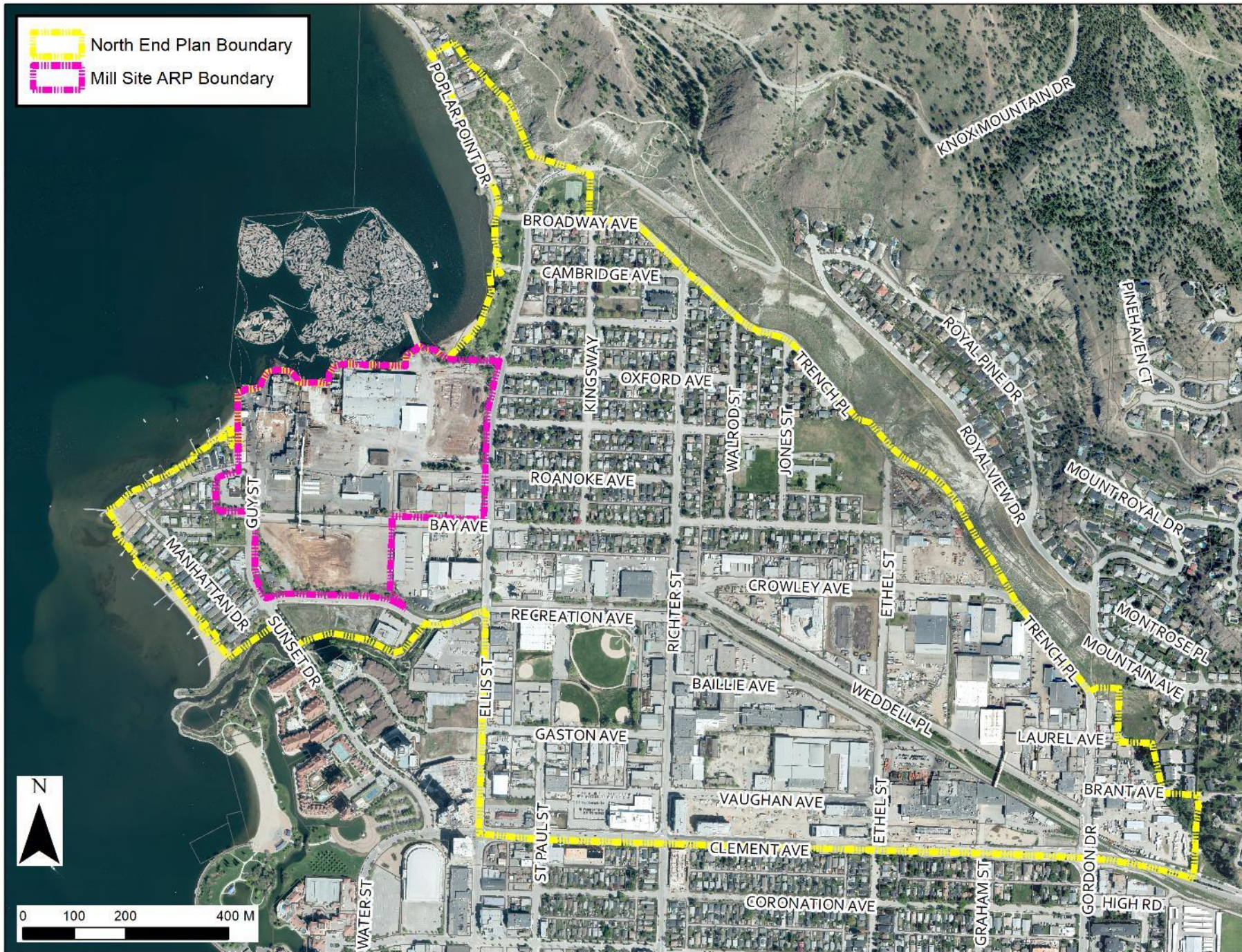


North End Plan Boundary

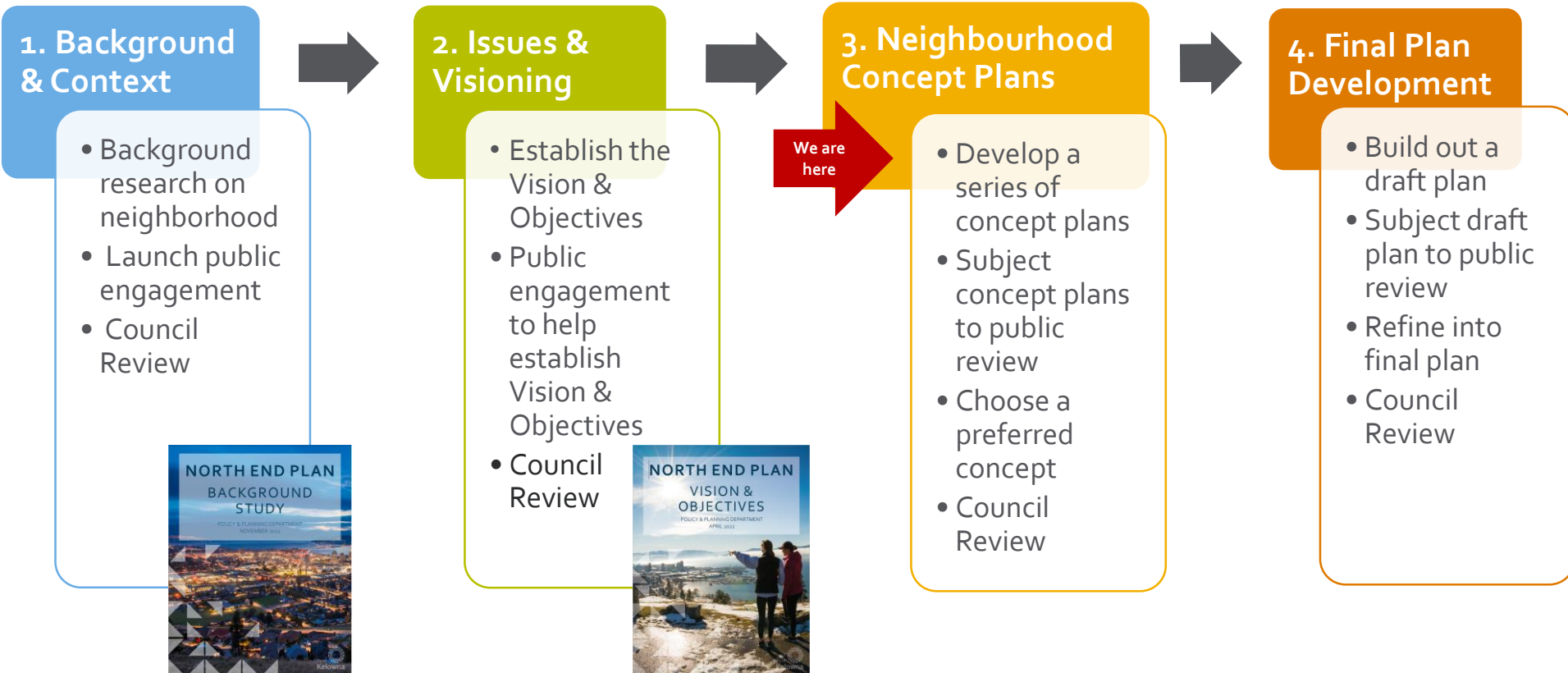
Mill Site ARP Boundary



0 100 200 400 M



NEP Process: 4 Phases



What Are Community Needs?

- ▶ Community Needs are the amenities that form an integral part of a complete and livable community
 - ▶ Examples: parks and open spaces, community facilities, cultural and entertainment venues, shops and services, affordable housing and other amenities
- ▶ Community Needs are not basic infrastructure to support anticipated growth in an area
 - ▶ Examples: Transportation and utility infrastructure



Project Refinement and Funding

1. Preliminary list of Community Needs – Council endorsed
2. Financial Analysis
 - ▶ Evaluates the cost of proposed amenities
 - ▶ Considers funding sources and tools
3. Detailed cost estimates + funding strategy = Proposed Community Needs strategy
4. Council review and consideration of NEP concepts and Community Needs



Foundational Guidance



Prioritize sustainable transportation and shared mobility



Take action on climate



Focus investment in Urban Centres



Target growth along transit corridors



Stop planning new suburban neighbourhoods



Strengthen Kelowna as the region's economic hub



Protect and restore our environment



Incorporate equity into city building

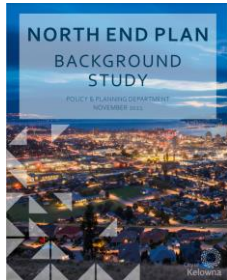


Promote more housing diversity

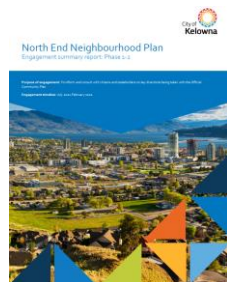


Protect agriculture

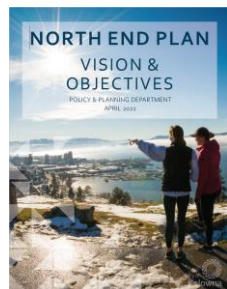
Foundational Guidance



- ▶ Phase 1 Background Report:
 - ▶ Community Needs identified as critical component of a complete and livable neighbourhood



- ▶ Phase 2 Public Engagement:
 - ▶ Strong desire among residents and stakeholders to see significant community needs incorporated in Plan



- ▶ Phase 2 Vision & Objectives:
 - ▶ Provision of community needs reflected at a high level

Parks, Public Spaces & Connections

- ▶ Community or City-Wide Park
- ▶ Waterfront Park and Pathway System
- ▶ Sutherland Bay Activation (on-water)
- ▶ Neighbourhood Parks

Key North End Objectives

- ▶ More parks and green space to serve the growing neighbourhood
- ▶ Maintain and enhance critical ecological features
- ▶ Improve the quality of the active transportation network
- ▶ Provide neighbourhood-scale community services that meet the needs of all North End residents



Community Space

- ▶ Multi-purpose and flexible
- ▶ Opportunities for recreational, cultural and other community uses

Key North End Objectives

- ▶ Expand park and recreation amenities and facilities
- ▶ Support and advance arts, culture and community gathering
- ▶ Reduce the need for daily travel outside in the North End
- ▶ Provide neighbourhood-scale community services that meet the needs of all North End residents



Local Access to Daily Needs

- ▶ Shops and services that serve everyday needs
- ▶ Facilitate and support land uses and services that cater to daily needs
- ▶ Support population density needed to support local business
- ▶ Provision of many daily needs ultimately requires buy-in from private sector

Key North End Objectives

- ▶ Support the growth of neighbourhood-scale, local retail and commercial uses
- ▶ Explore local food production and sales in public spaces
- ▶ Reduce the need for daily travel outside in the North End
- ▶ Provide neighbourhood-scale community services that meet the needs of all North End residents



School Facility & Childcare

- ▶ Continue to work with School District to explore opportunities for a school in the area
- ▶ Explore opportunities to facilitate additional childcare spaces

Key North End Objectives

- ▶ Reduce the need for daily travel outside in the North End
- ▶ Provide neighbourhood-scale community services that meet the needs of all North End residents



Housing Affordability

- ▶ Increase the diversity of market housing
- ▶ Incorporate affordable rental & ownership opportunities
- ▶ Work with all levels of government & non-profit organizations to meet these housing needs

Key North End Objectives

- ▶ Expand the supply and variety of housing
- ▶ Increase housing options across the Housing Wheelhouse
- ▶ Provide appropriate supports to people experiencing homelessness
- ▶ Address and mitigate gentrification and resident displacement



NEP Next Steps – Phase 3: Concept Plans

- ▶ Community Needs strategy
- ▶ Develop Concepts
- ▶ Public engagement to help inform a Preferred Concept
- ▶ Bring Preferred Concept to Council for endorsement
- ▶ Use endorsed Preferred Concept to develop a Draft Plan (Phase 4)





City of
Kelowna

North End Plan Community Needs Workshop

August, 2022