

# ATTACHMENT A

This forms part of application

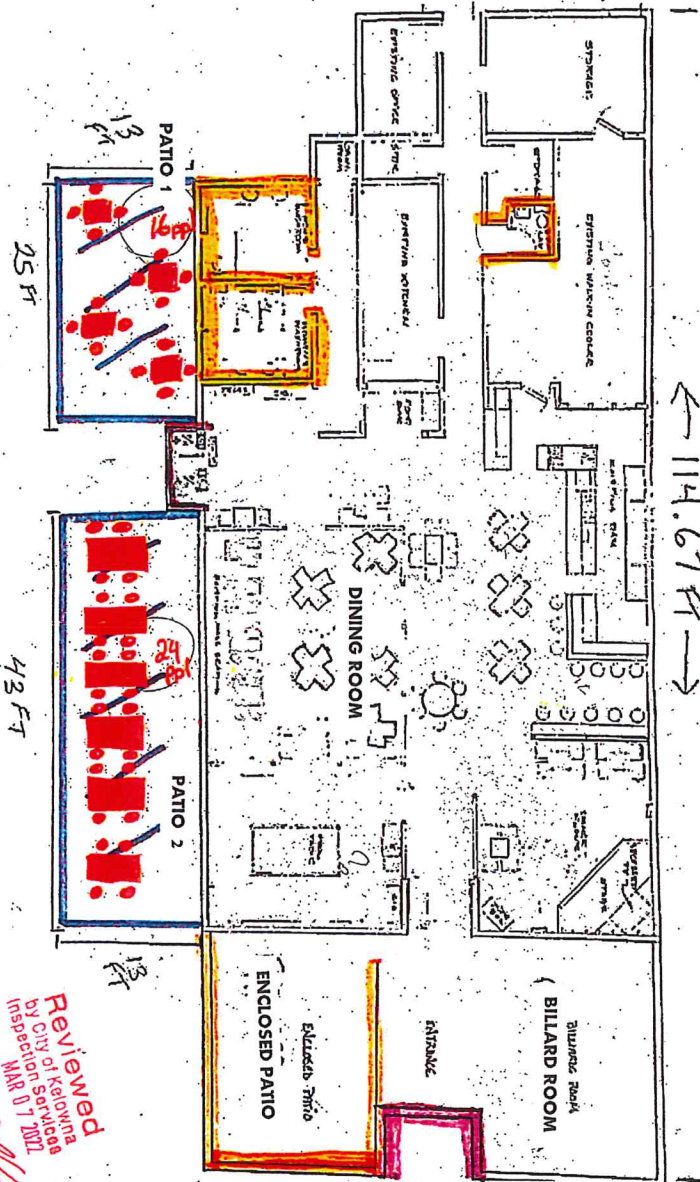
# LL22-0005

Planner Initials JI



Scanned with CamScanner

## PACKING HOUSE PUB 663 Finns Road Kelowna



Reviewed  
by City of Kelowna  
inspection MNR 017 2022  
*D.W.*

NORTH →

- The Dining Room has a net floor area of 114 m<sup>2</sup>. The maximum occupant load shall be 120 persons, based on WHS 4-200 m<sup>2</sup>s.
- The Billiard Room has a net floor area of N/A m<sup>2</sup>. The maximum occupant load shall be 20 persons, based on WHS 4-200 m<sup>2</sup>s.
- The Enclosed Patio has a net floor area of N/A m<sup>2</sup>. The maximum occupant load shall be 10 persons, based on WHS 4-200 m<sup>2</sup>s.
- The Patio 1 has a net floor area of N/A m<sup>2</sup>. The maximum occupant load shall be 24 persons, based on WHS 4-200 m<sup>2</sup>s.
- The Patio 2 has a net floor area of N/A m<sup>2</sup>. The maximum occupant load shall be 24 persons, based on WHS 4-200 m<sup>2</sup>s.

Good Afternoon Jason,

We are currently applying to make our purpose-built outdoor patio permanent. When we purchased the Packing House years ago, there was a concrete walled patio built for customers to enjoy, but it has sat vacant for years. Now, with the opportunity to make our temporary patio permanent, we would like to use this opportunity to license that purpose-built patio once again. Over the years, we have tried to change the Packing House Pub into more of a food forward venue. With no outdoor space, summer has always been more difficult for us. During Covid, the ability to use the outdoor space was a fantastic asset for us, and we would absolutely love to keep it going. With this opportunity to license our outside outdoor patio, it will enhance our customers' enjoyment of the venue as well as allow us to operate on a more even playing field with the other businesses similar to ours in the City. We know the Okanagan Valley for its fantastic weather and this will allow us to offer our customers an outdoor dining experience that has been lacking at the Packing House for so many years.

Thank you

Brandon Loughery

<b>ATTACHMENT</b>	<b>B</b>
This forms part of application	
# LL22-0005	
Planner Initials	<input type="text" value="JI"/>
 City of <b>Kelowna</b> DEVELOPMENT PLANNING	