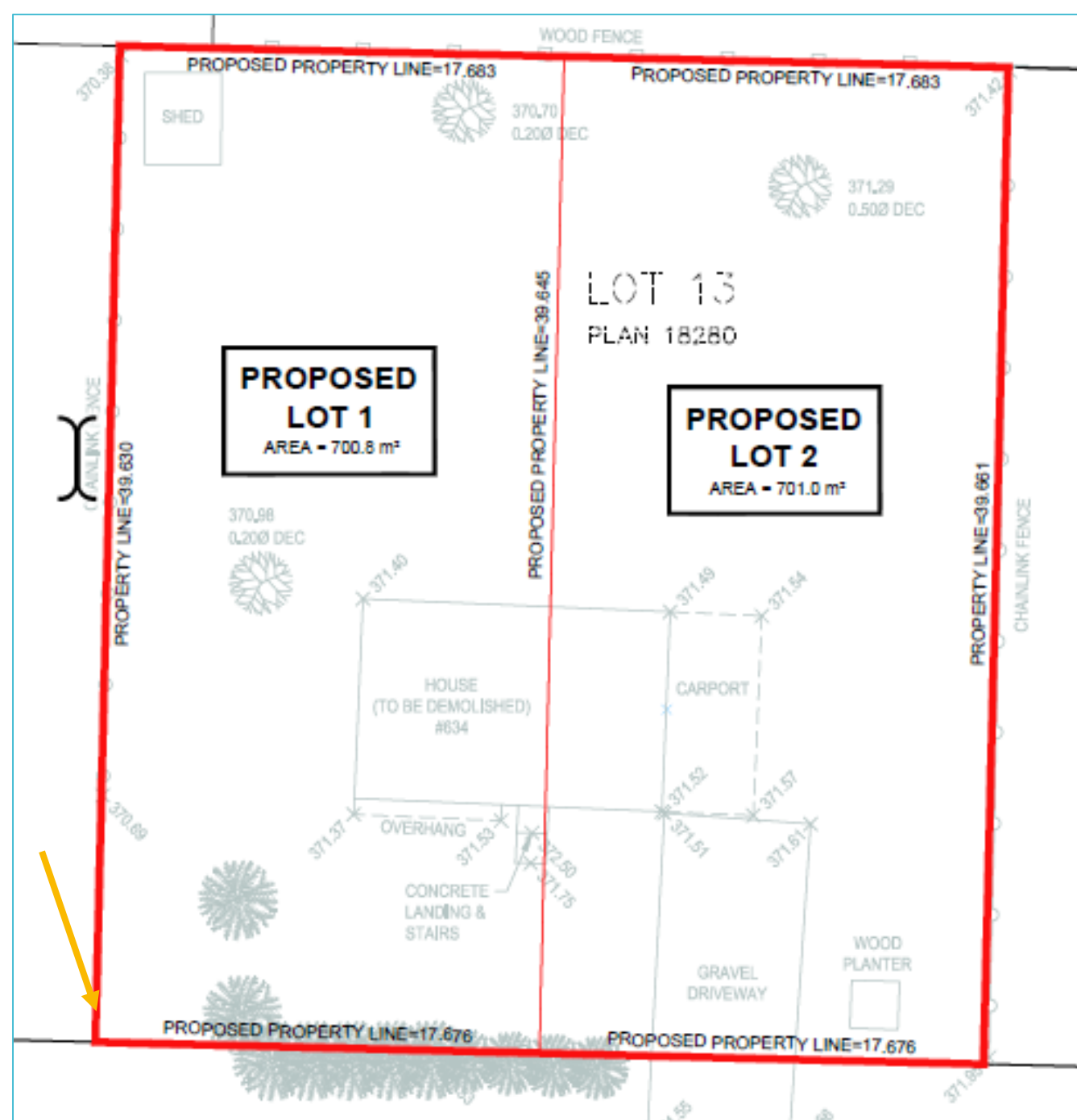




634 McClure

Variance to lot line length

Specific variance to reduce front lot line from 18m required to 17.67m – a reduction of 0.33m or 1foot





Proposed
buildings

Neighbourhood context



685 McClure Road – lot width of 16.12m



661 McClure Road – lot width of 13.72m.



621 & 625 McClure Road – lot width of 13.71m each

Neighbouring properties 663 & 667 McClure Road (not shown) have a lot width of 13.72m & 13.73m.

Questions?

