

**CITY OF KELOWNA**

**BYLAW NO. 12385**

**Road Closure and Removal of Highway Dedication Bylaw**  
**(Portion of Road Adjacent to 550-552 Valley Road)**

**A bylaw pursuant to Section 40 of the Community Charter to authorize the City to permanently close and remove the highway dedication of a portion of Road 550-552 Valley Road.**

---

NOW THEREFORE, the Municipal Council of the City of Kelowna, in open meeting assembled, hereby enacts as follows:

1. That portion of highway attached as Schedule "A" comprising 2290 m<sup>2</sup> shown in bold black as Road to be Closed on the Reference Plan prepared by Alexander C. Dzielski, B.C.L.S., is hereby stopped up and closed to traffic and the highway dedication removed.
2. The Mayor and City Clerk of the City of Kelowna are hereby authorized to execute such conveyances, titles, survey plans, forms and other documents on behalf of the said City as may be necessary for the purposes aforesaid.

Read a first, second and third time by the Municipal Council this 11<sup>th</sup> day of July, 2022.

Adopted by the Municipal Council of the City of Kelowna this

---

Mayor

---

City Clerk

Bylaw No. 12385 - Page 2  
Schedule "A"

PLAN EPP121278

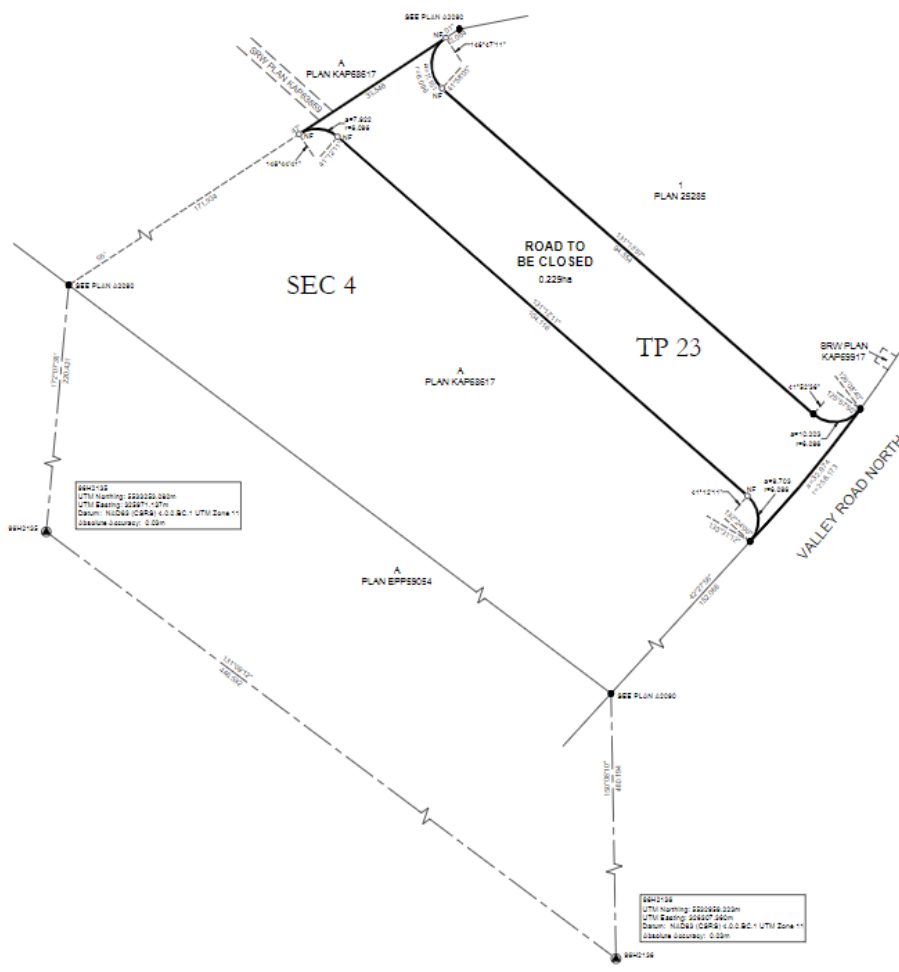
REFERENCE PLAN TO  
ACCOMPANY BYLAW NO. 12385  
CITY OF KELOWNA TO CLOSE  
ROAD DEDICATED ON PLAN 25285  
SECTION 4 TOWNSHIP 23  
OSOYOOS DIVISION YALE  
DISTRICT

PURSUANT TO SECTION 120 OF THE LAND TITLE ACT AND  
SECTION 40 OF THE COMMUNITY CHARTER.  
BCGS 82E 093

SCALE 1:500  
0 10 20 30 40 50 METERS  
The intended plot size of this plan is 860mm in width by 432mm in height (C size) when plotted at a scale of 1:500.

LEGEND  
● Found Standard Iron Post  
○ Placed Standard Iron Post  
⊙ Found Control Monument

Integrated Survey Area No. 4, City of Kelowna NAD83 (CBRS) 4.0.0.BC.1  
Grid bearings are derived from GNSS observations and are referred to the central meridian of UTM Zone 11 (117° West Longitude).  
The UTM coordinates and estimated absolute accuracy achieved are derived from dual frequency GNSS observations to CANMET Active Control Station BC\_Kelowna.  
The coordinates and absolute accuracies shown on this plan are a result of an independent and accurate GNSS survey and do not represent official published coordinates.  
This plan shows horizontal ground-level distances, unless otherwise specified. To compute grid distances, multiply ground-level distance by the average combined factor of 0.99905. The average combined factor has been determined based on an ellipsoidal elevation of 425 metres.  
This plan lies within the Regional District of Central Okanagan.  
This plan lies within the Agricultural Land Reserve.  
The field survey represented by this plan was completed on the 26th day of May, 2022.  
Alexander C. Dzieski, BCLB 1039



**VECTOR**  
GEOMETRICAL LAND SURVEYING LTD.  
111-410 Columbia Ave.  
Kelowna, B.C. V1Y 1C3  
Ph: (250) 866-0170  
www.vectorgeomatics.com  
FILE No: 2021-02390 Date: 2022-04-02 Drawn by: VJH  
DRAWING No: 2021-023-001-01-01-001