

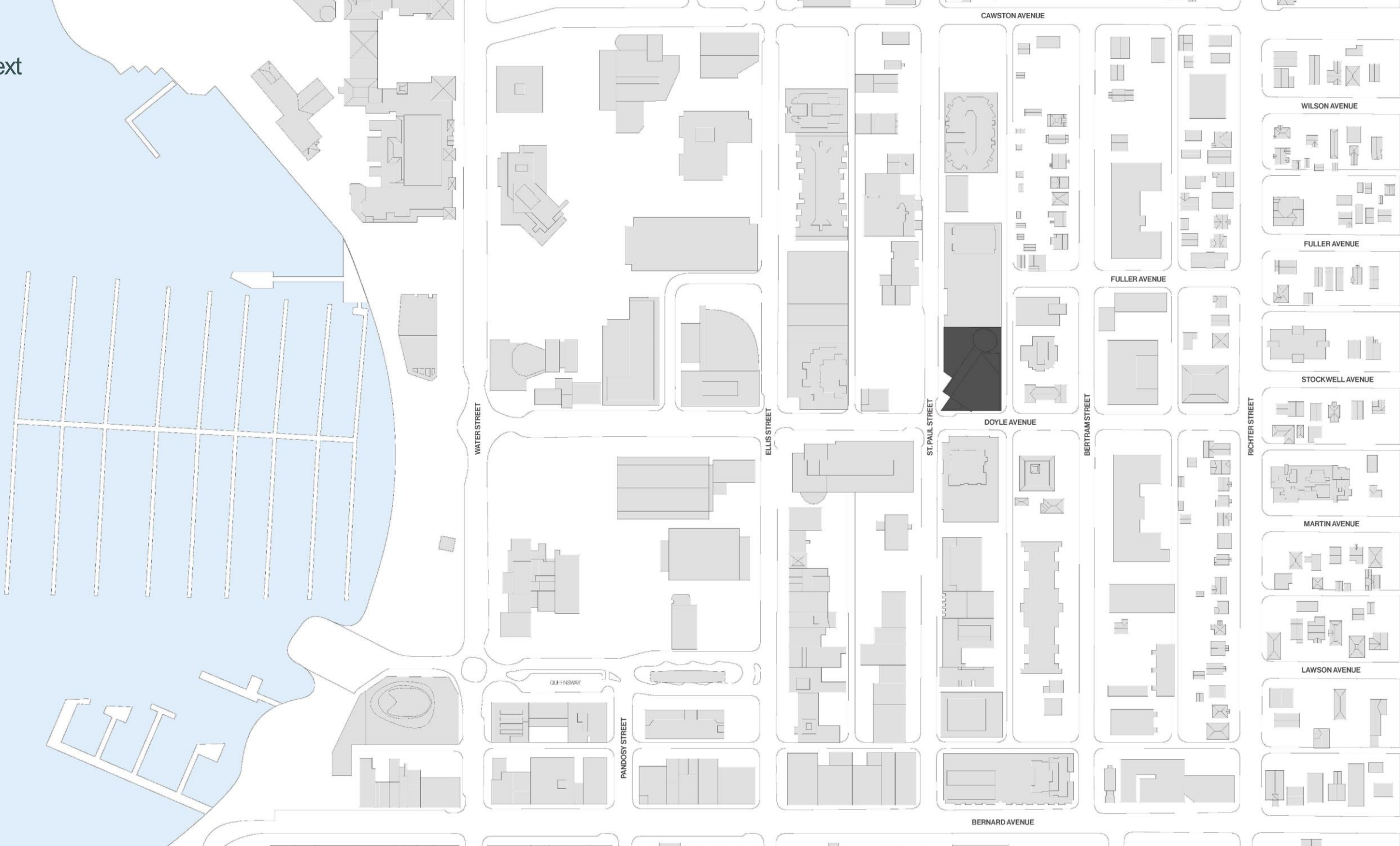


Olson Kundig

UBCO Downtown Campus

Public Open House

Context



CAWSTON AVENUE

WILSON AVENUE

FULLER AVENUE

FULLER AVENUE

STOCKWELL AVENUE

DOYLE AVENUE

MARTIN AVENUE

LAWSON AVENUE

BERNARD AVENUE

WATER STREET

ELLIS STREET

ST. PAUL STREET

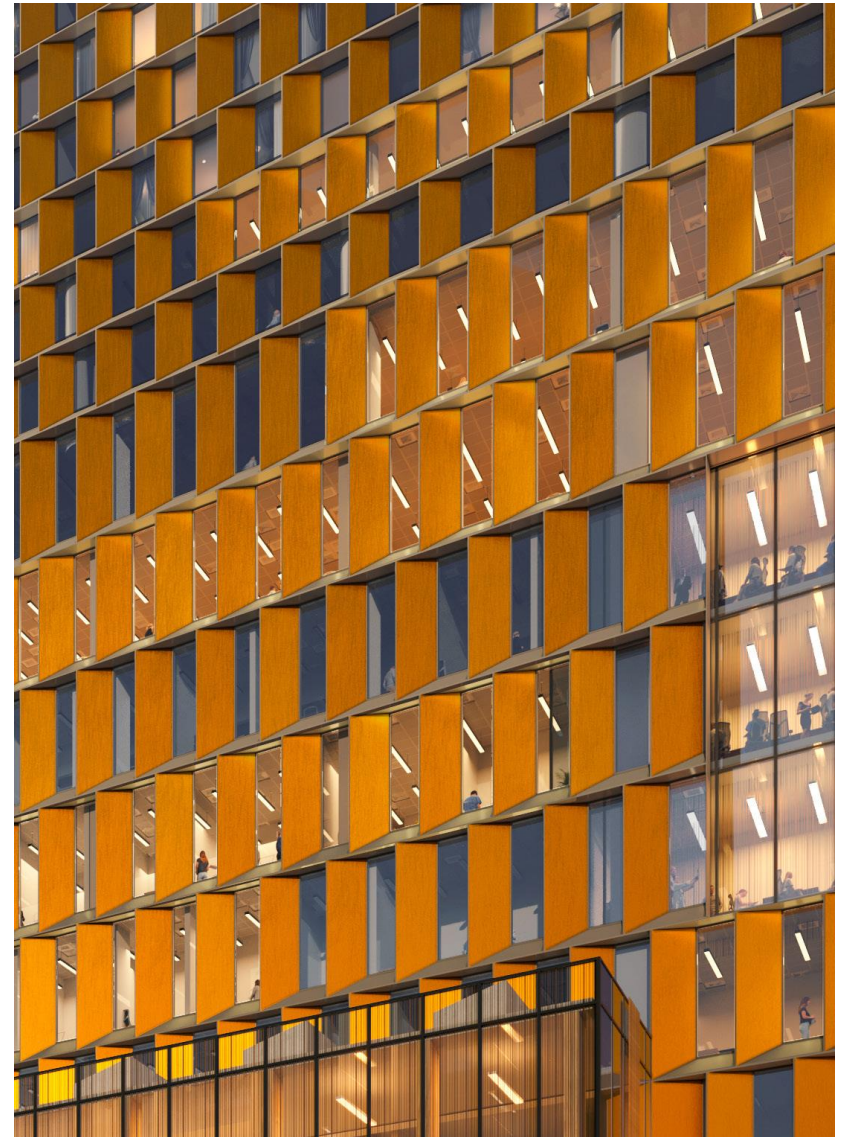
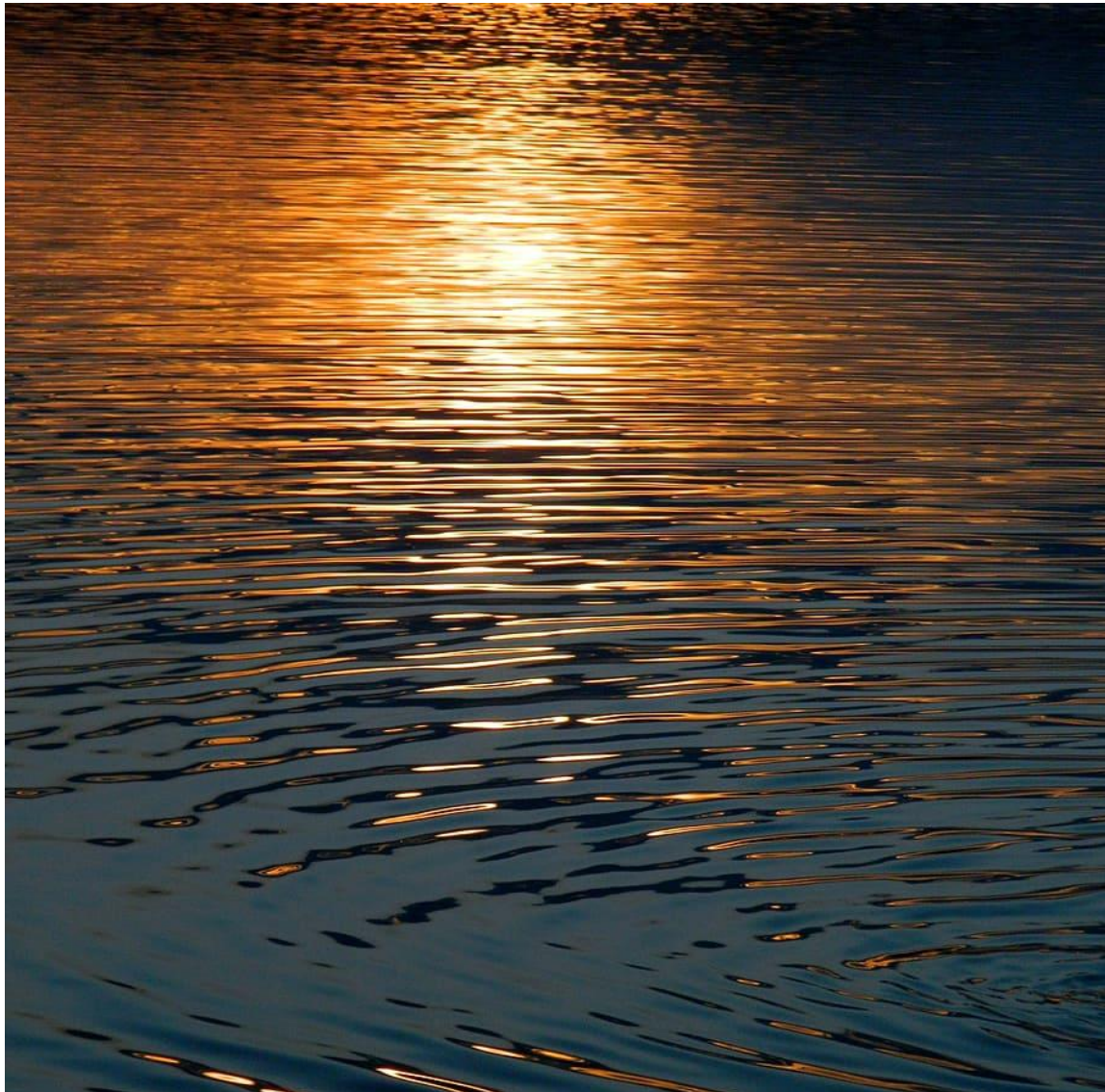
BERTRAM STREET

RICHTER STREET

QUINWAY

PANDOSY STREET

Shimmer



Gradient



Sail



Sustainability and Climate Action



01 BC Step Code



02 Low carbon concrete



03 Regenerative Resource Center (L11)



04 Solar wall on the South facade



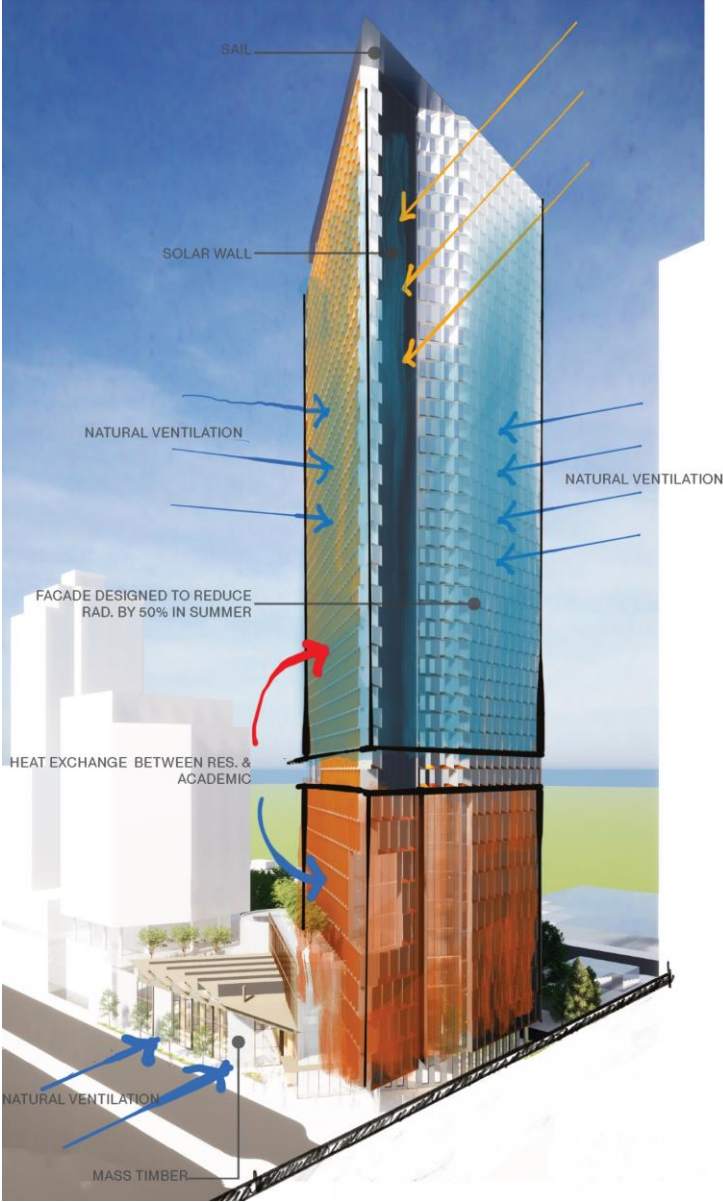
05 LEED Gold



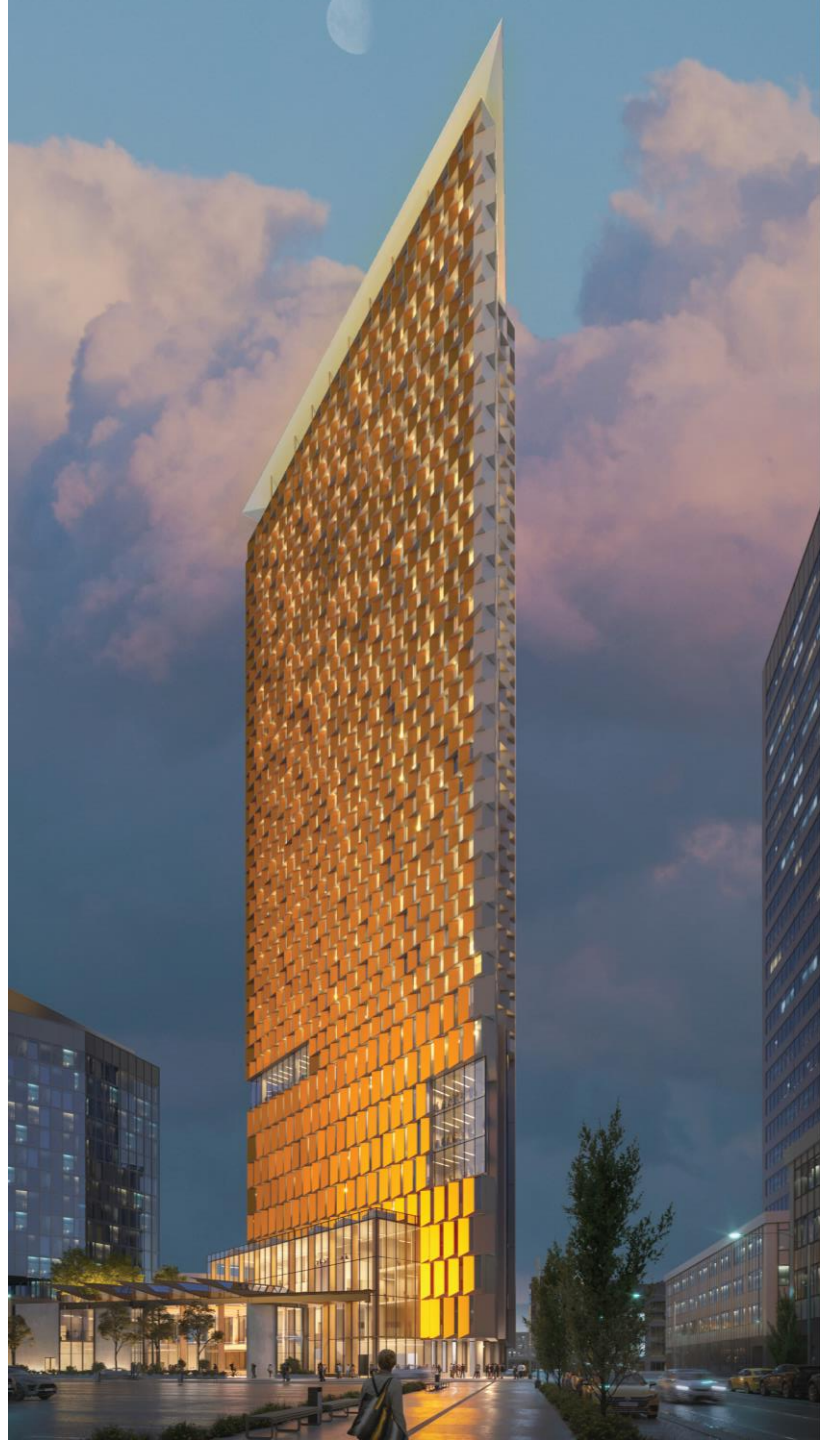
06 Shower Drain Water Heat Recovery



07 Greywater Reuse













Ice Cream	Topping	Gluten Free	MILKSHAKE
Vanilla Soft-Cone \$4.50	Chocolate Chip \$1.50	Chocolate Chip \$4.50	Vanilla \$4.50
Strawberry Soft-Cone \$4.50	Vanilla \$1.50	Vanilla \$4.50	Vanilla / Raspberry Meringue \$5.50
Marshmallow Soft-Cone \$4.50	Caramel Sauce \$1.50	Strawberry \$4.50	Strawberry / Caramel \$5.50
French Onion Soft-Cone \$4.50	Fruity Medley \$1.50	Chocolate Brownie \$4.50	Chocolate / Caramel \$5.50
Chocolate Soft-Cone \$4.50	Espresso Beans \$1.50	Vanilla \$4.50	Vanilla / Raspberry \$5.50
Chocolate / Chip Cookie Dough \$4.50	New York \$1.50	Chocolate Brownie \$5.50	Vanilla / Raspberry \$5.50
Espresso Soft-Cone \$4.50	Cookie Dough \$1.50	Espresso / Raspberry \$5.50	Espresso / Raspberry \$5.50
Espresso / Caramel Soft-Cone \$4.50	Espresso Beans \$1.50	Espresso / Raspberry \$5.50	Espresso / Raspberry \$5.50
New York Soft-Cone \$4.50	Espresso Beans \$1.50	Espresso / Raspberry \$5.50	Espresso / Raspberry \$5.50





OKANAGAN
GALLERY





YOU DID IT!

LEARN FROM

01

02

03

04

05

06

07

08

09

10

11

12

13

14

15

16

17

18

19

20

21

22

23

24

25

26

27

28

29

30

31

32

33

34

35

36

37

38

39

40

41

42

43

44

45

46

47

48

49

50

51

52

53

54

55

56

57

58

59

60

61

62

63

64

65

66

67

68

69

70

71

72

73

74

75

76

77

78

79

80

81

82

83

84

85

86

87

88

89

90

91

92

93

94

95

96

97

98

99

100

About Us

WELCOME TO APCURE. AN AMAZING HOSPITAL IN HANDLING

HEALTH IS SOMETHING THAT MUST OWNED BY HUMANS



The digital display features a presentation slide with a teal and white color scheme. On the left, the text reads 'About Us' and 'WELCOME TO APCURE. AN AMAZING HOSPITAL IN HANDLING'. In the center, there is a grid of images showing medical professionals in various settings, including a close-up of hands in gloves. On the right, the text reads 'Portfolio' and 'HEALTH IS SOMETHING THAT MUST OWNED BY HUMANS', accompanied by an image of a surgeon in an operating room.

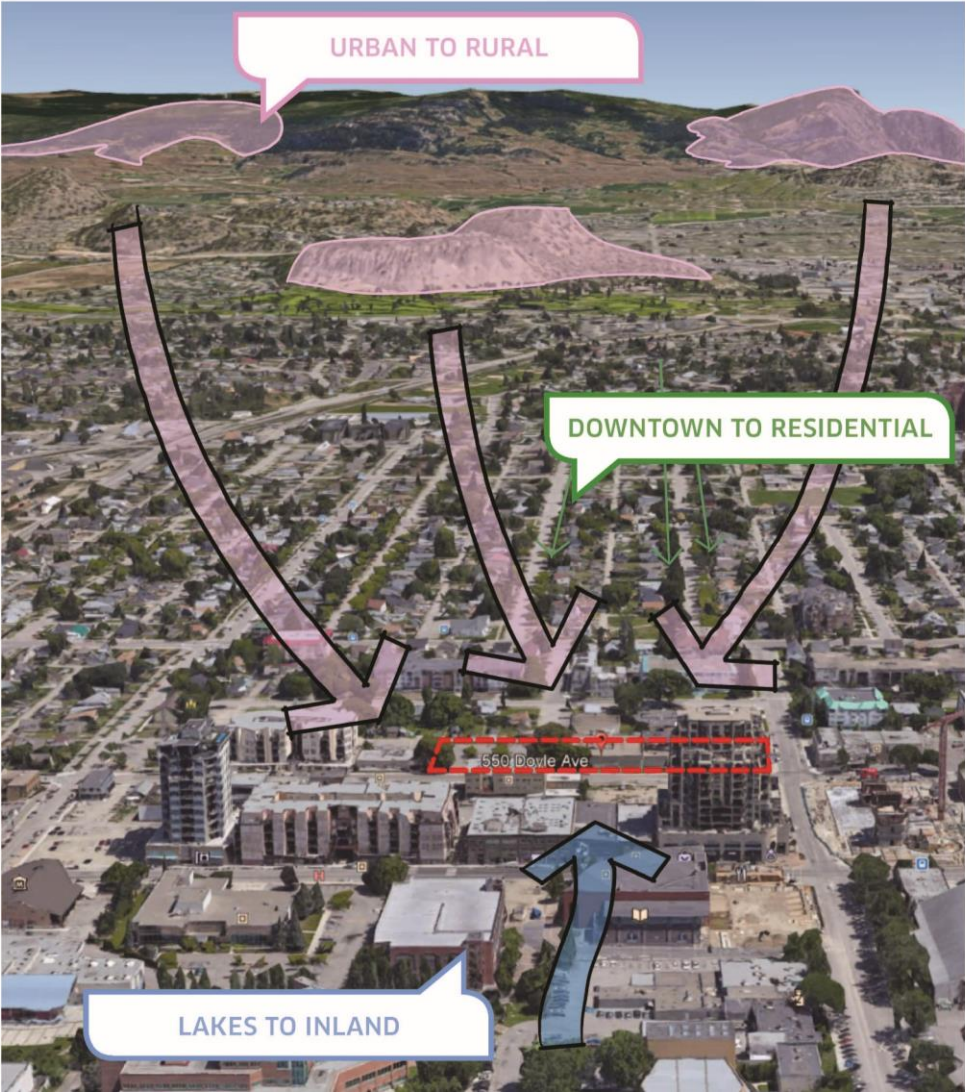
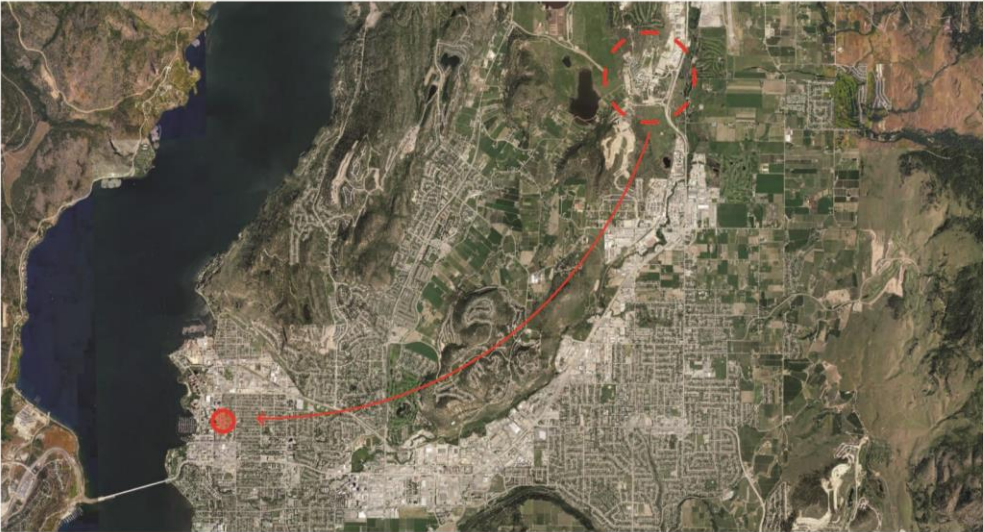
Whiteboard content including diagrams and text.



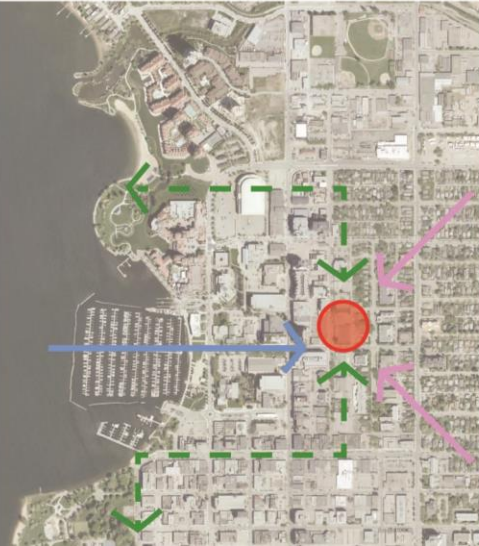
The whiteboard contains several sections of text and diagrams. On the left, there is a floor plan diagram. In the center, there is a list of items with checkboxes. On the right, there is a table with columns and rows of text, possibly a schedule or agenda.



Context



UBCO comes downtown
Unites urban with rural
Downtown to residential
The lake to inland regions



The surrounding region



Draw inspiration from the surrounding region.



Understand key gradients in the land.



What does it mean to insert a landscape into a downtown area?

A variety of program



Student life is the key driver - and presents major landscape opportunities

Site wants to generate and facilitate urban life

Academic, Offices, Workplace Gatherings, Career Fairs, Food Events, Residential Amenities

Landscape drivers

The landscape architecture and design of outdoor spaces are then organized around **3** key principles.

1

SITE AS A MEETING POINT & REFLECTION

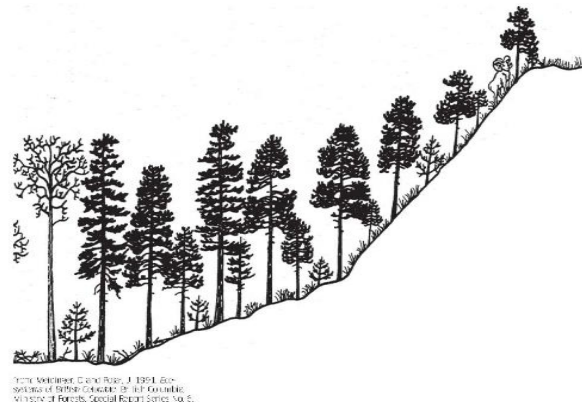
Much as the site acts as an edge condition - joining rural to urban, downtown to residential areas, and the lake to inland zones - it should facilitate gatherings and reflect the surrounding landscape.



2

CHARACTER BY ELEVATION

The landscape character of the Okanagan is wonderfully varied, and often changes occur alongside shifts in elevation. Each of the zones in the project will start or occupy a unique character related to its height in the project, with differing material and plant palette selections by zone.



3

A DIVERSITY OF USES

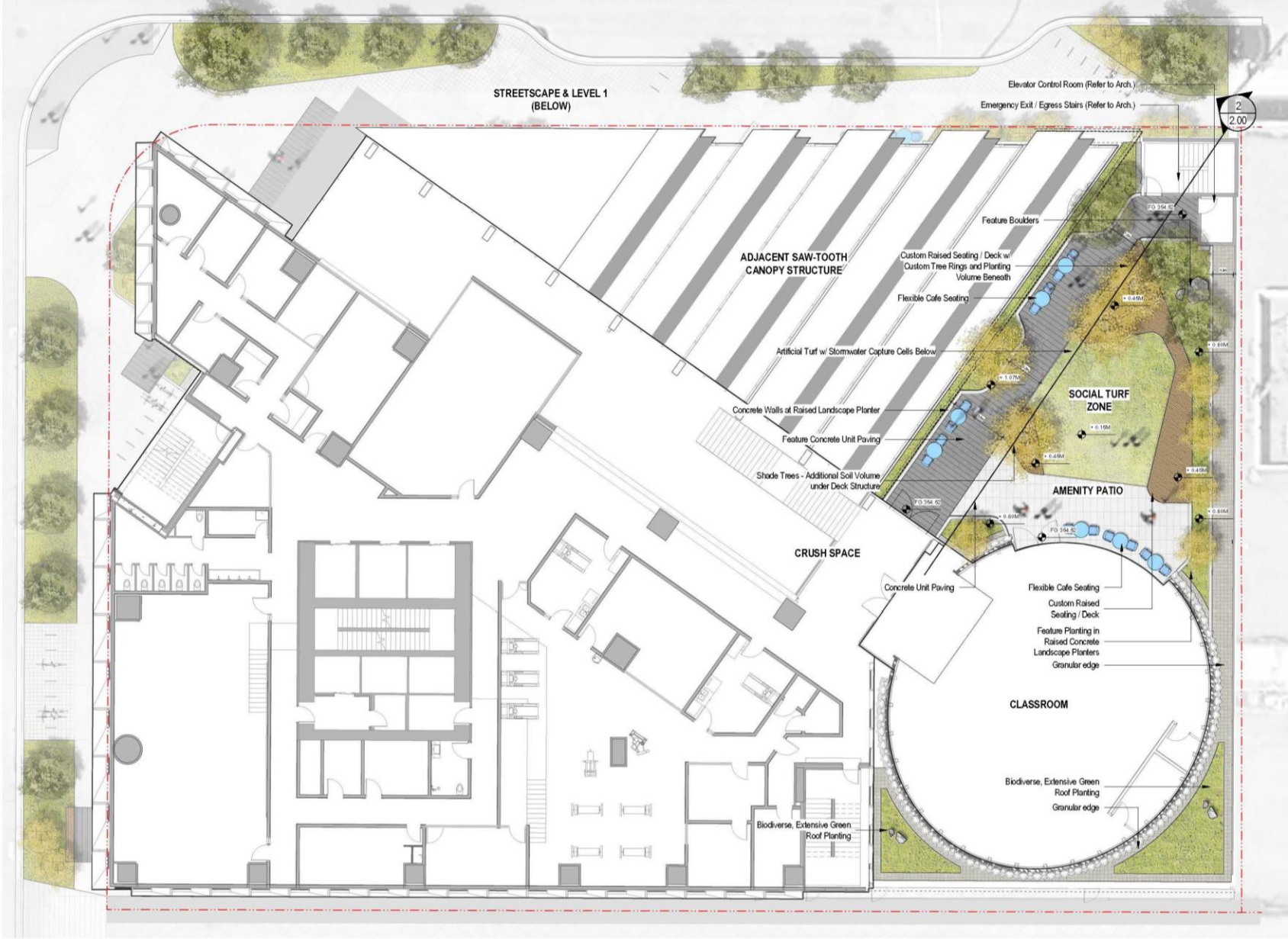
With students, office workers, residential users, teaching staff, and the public - all from a diversity of backgrounds - coming to the site, the outdoor zones have been formed to allow for many social combinations. Groups of varying sizes, activity levels, and needs will all find a favourite spot within the project.



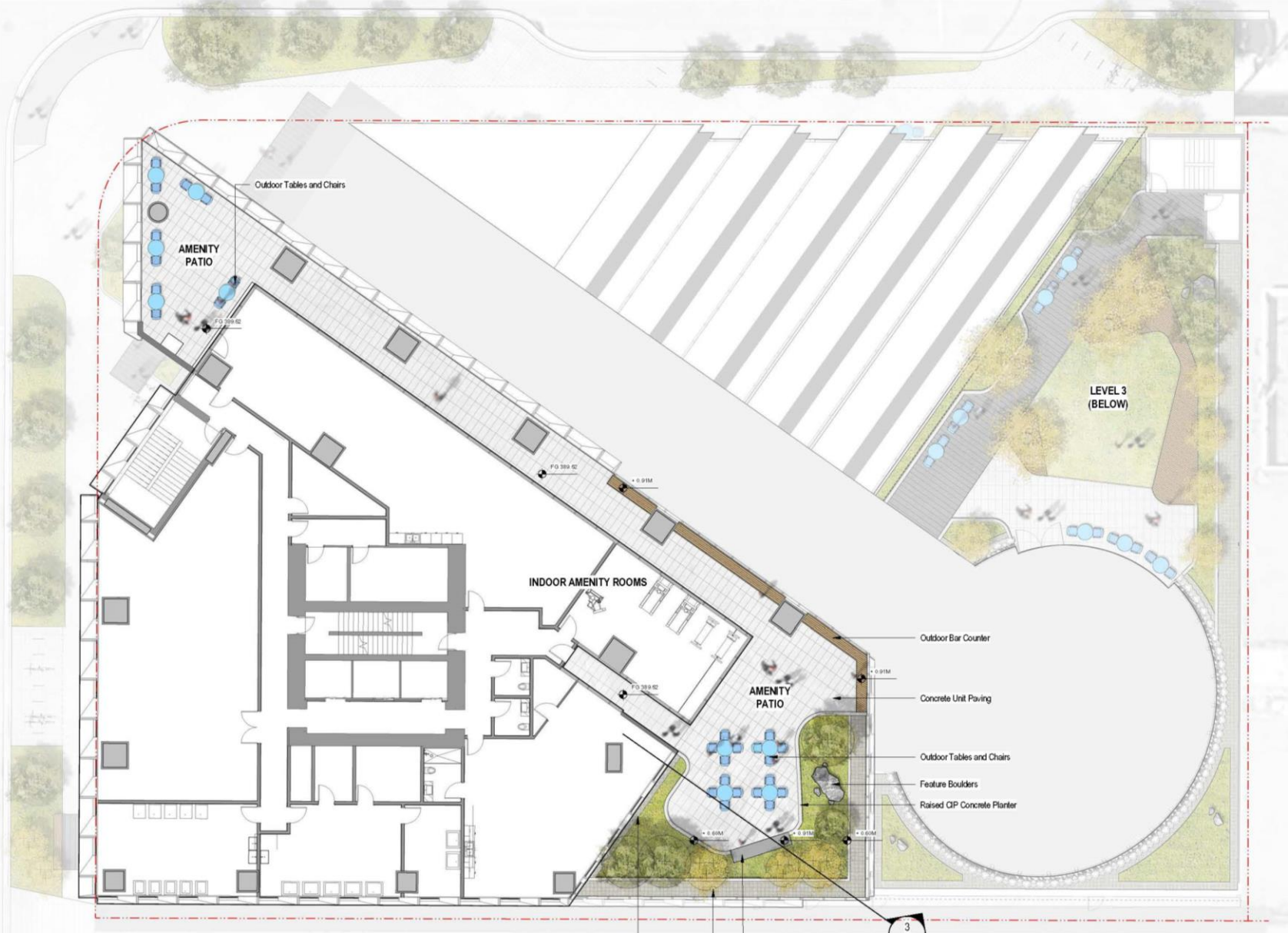
Landscape
Plan level 1



Landscape Plan level 3



Landscape
Plan level 11



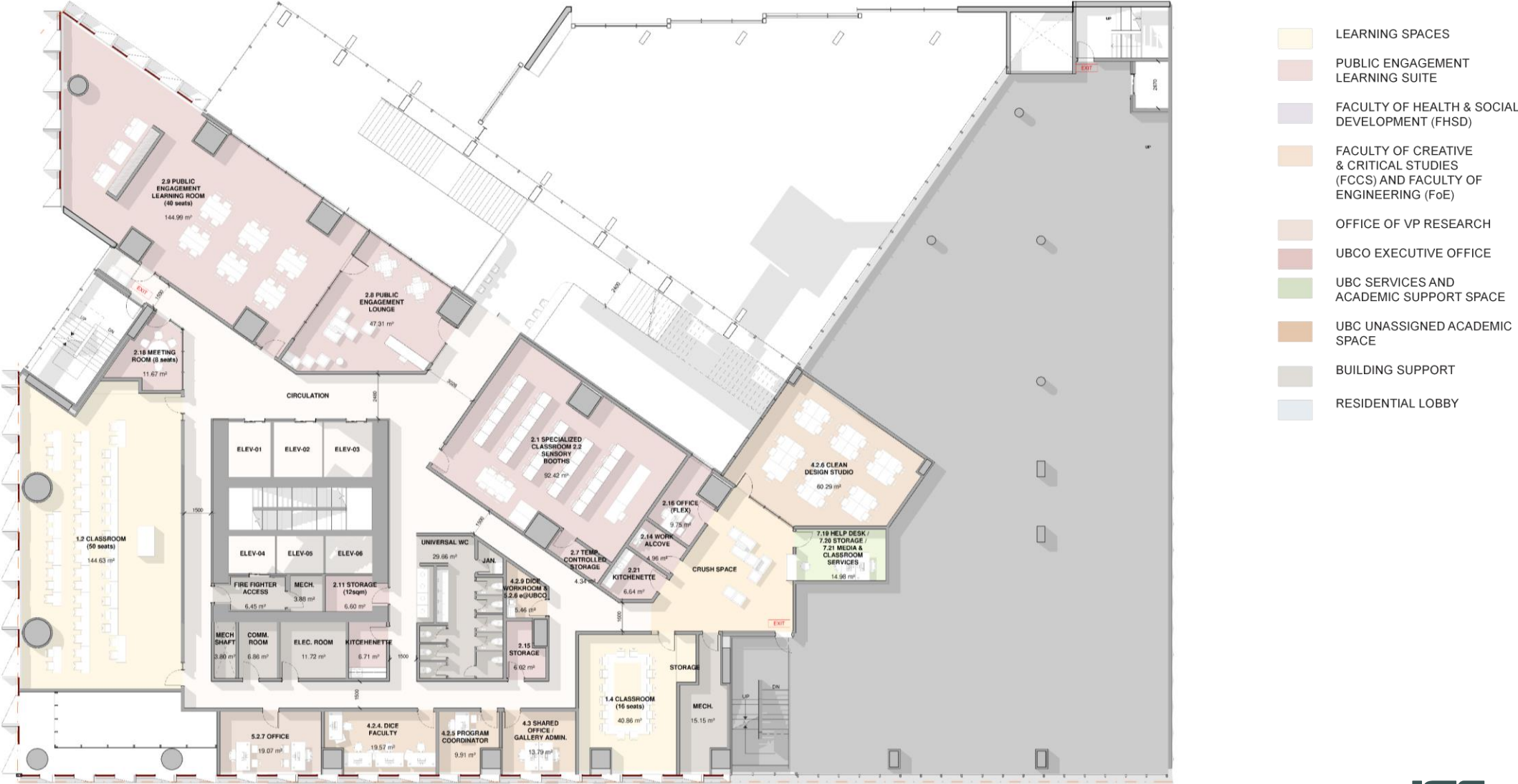
Plan level 1



- LEARNING SPACES
- PUBLIC ENGAGEMENT LEARNING SUITE
- FACULTY OF HEALTH & SOCIAL DEVELOPMENT (FHSD)
- FACULTY OF CREATIVE & CRITICAL STUDIES (FCCS) AND FACULTY OF ENGINEERING (FoE)
- OFFICE OF VP RESEARCH
- UBCO EXECUTIVE OFFICE
- UBC SERVICES AND ACADEMIC SUPPORT SPACE
- UBC UNASSIGNED ACADEMIC SPACE
- BUILDING SUPPORT
- RESIDENTIAL LOBBY



Plan level 2



Plan level 3



- LEARNING SPACES
- PUBLIC ENGAGEMENT LEARNING SUITE
- FACULTY OF HEALTH & SOCIAL DEVELOPMENT (FHSD)
- FACULTY OF CREATIVE & CRITICAL STUDIES (FCCS) AND FACULTY OF ENGINEERING (FoE)
- OFFICE OF VP RESEARCH
- UBCO EXECUTIVE OFFICE
- UBC SERVICES AND ACADEMIC SUPPORT SPACE
- UBC UNASSIGNED ACADEMIC SPACE
- BUILDING SUPPORT
- RESIDENTIAL LOBBY



Plan level 4



- LEARNING SPACES
- PUBLIC ENGAGEMENT LEARNING SUITE
- FACULTY OF HEALTH & SOCIAL DEVELOPMENT (FHSD)
- FACULTY OF CREATIVE & CRITICAL STUDIES (FCCS) AND FACULTY OF ENGINEERING (FoE)
- OFFICE OF VP RESEARCH
- UBCO EXECUTIVE OFFICE
- UBC SERVICES AND ACADEMIC SUPPORT SPACE
- UBC UNASSIGNED ACADEMIC SPACE
- BUILDING SUPPORT
- RESIDENTIAL LOBBY



Plan level 5



- LEARNING SPACES
- PUBLIC ENGAGEMENT LEARNING SUITE
- FACULTY OF HEALTH & SOCIAL DEVELOPMENT (FHSD)
- FACULTY OF CREATIVE & CRITICAL STUDIES (FCCS) AND FACULTY OF ENGINEERING (FoE)
- OFFICE OF VP RESEARCH
- UBCO EXECUTIVE OFFICE
- UBC SERVICES AND ACADEMIC SUPPORT SPACE
- UBC UNASSIGNED ACADEMIC SPACE
- BUILDING SUPPORT
- RESIDENTIAL LOBBY



Plan level 6



- LEARNING SPACES
- PUBLIC ENGAGEMENT LEARNING SUITE
- FACULTY OF HEALTH & SOCIAL DEVELOPMENT (FHSD)
- FACULTY OF CREATIVE & CRITICAL STUDIES (FCCS) AND FACULTY OF ENGINEERING (FoE)
- OFFICE OF VP RESEARCH
- UBCO EXECUTIVE OFFICE
- UBC SERVICES AND ACADEMIC SUPPORT SPACE
- UBC UNASSIGNED ACADEMIC SPACE
- BUILDING SUPPORT
- RESIDENTIAL LOBBY



Plan level 7



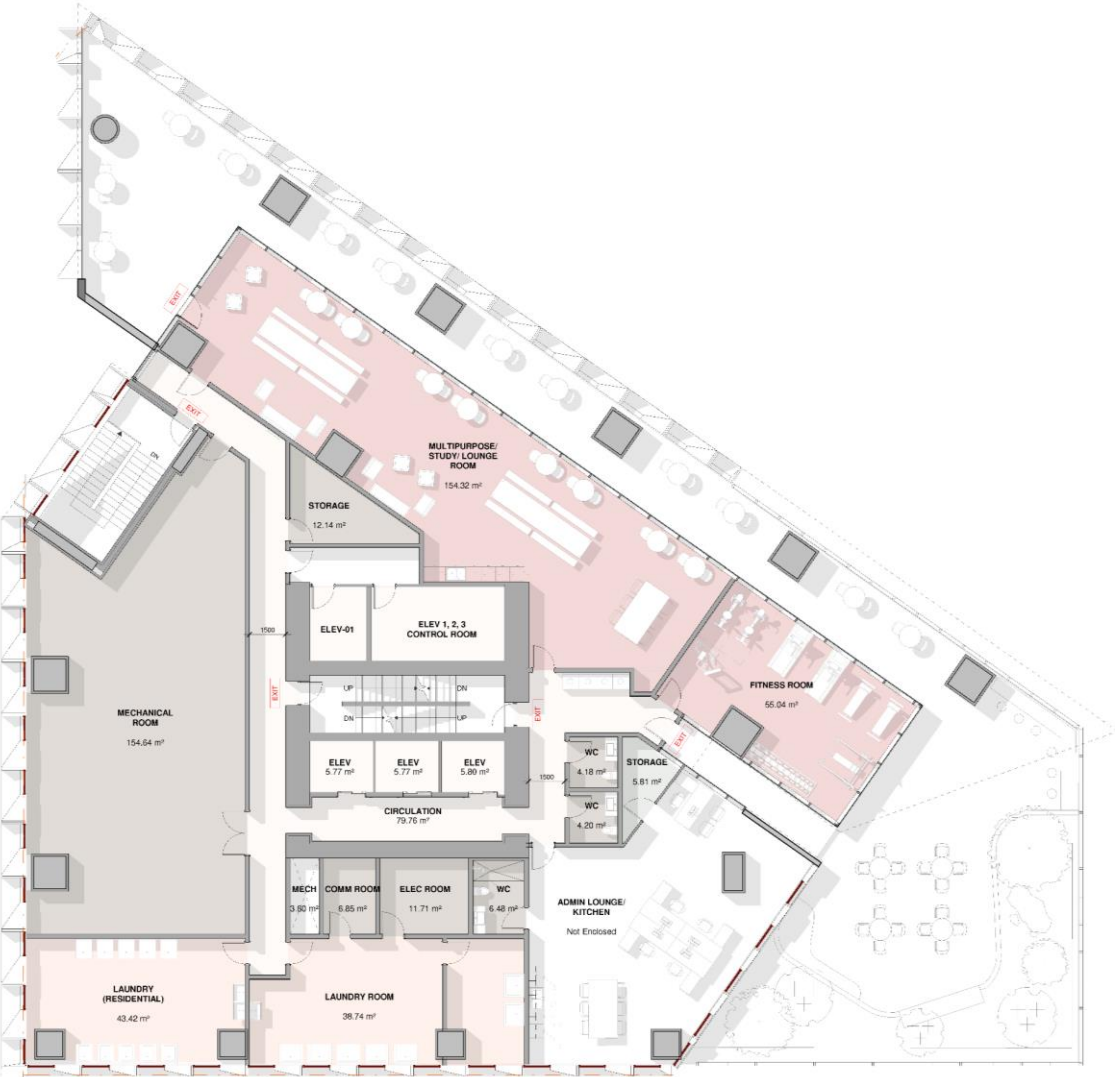
Plan level 8



- LEARNING SPACES
- PUBLIC ENGAGEMENT LEARNING SUITE
- FACULTY OF HEALTH & SOCIAL DEVELOPMENT (FHSD)
- FACULTY OF CREATIVE & CRITICAL STUDIES (FCCS) AND FACULTY OF ENGINEERING (FoE)
- OFFICE OF VP RESEARCH
- UBCO EXECUTIVE OFFICE
- UBC SERVICES AND ACADEMIC SUPPORT SPACE
- UBC UNASSIGNED ACADEMIC SPACE
- BUILDING SUPPORT
- RESIDENTIAL LOBBY



Plan level 11



- LEARNING SPACES
- PUBLIC ENGAGEMENT LEARNING SUITE
- FACULTY OF HEALTH & SOCIAL DEVELOPMENT (FHSD)
- FACULTY OF CREATIVE & CRITICAL STUDIES (FCCS) AND FACULTY OF ENGINEERING (FoE)
- OFFICE OF VP RESEARCH
- UBCO EXECUTIVE OFFICE
- UBC SERVICES AND ACADEMIC SUPPORT SPACE
- UBC UNASSIGNED ACADEMIC SPACE
- BUILDING SUPPORT
- RESIDENTIAL LOBBY



Plan level 12-44



- LEARNING SPACES
- PUBLIC ENGAGEMENT LEARNING SUITE
- FACULTY OF HEALTH & SOCIAL DEVELOPMENT (FHSD)
- FACULTY OF CREATIVE & CRITICAL STUDIES (FCCS) AND FACULTY OF ENGINEERING (FoE)
- OFFICE OF VP RESEARCH
- UBCO EXECUTIVE OFFICE
- UBC SERVICES AND ACADEMIC SUPPORT SPACE
- UBC UNASSIGNED ACADEMIC SPACE
- BUILDING SUPPORT
- RESIDENTIAL LOBBY

