

DP22-0008

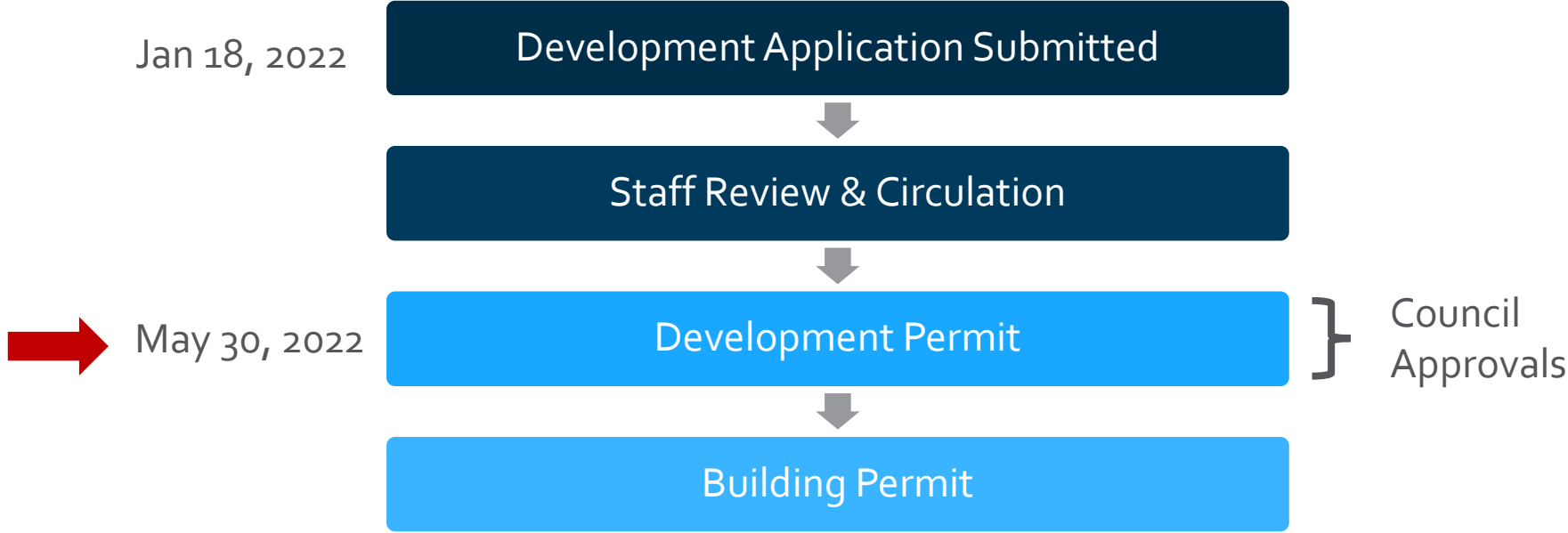
2015 Matrix Cres

Development Permit Application

Proposal

- ▶ To issue a Development Permit for the form and character of a new four-storey industrial development.

Development Process



Context Map



City of Kelowna

OCP Future Land Use / Zoning



Subject Property Map

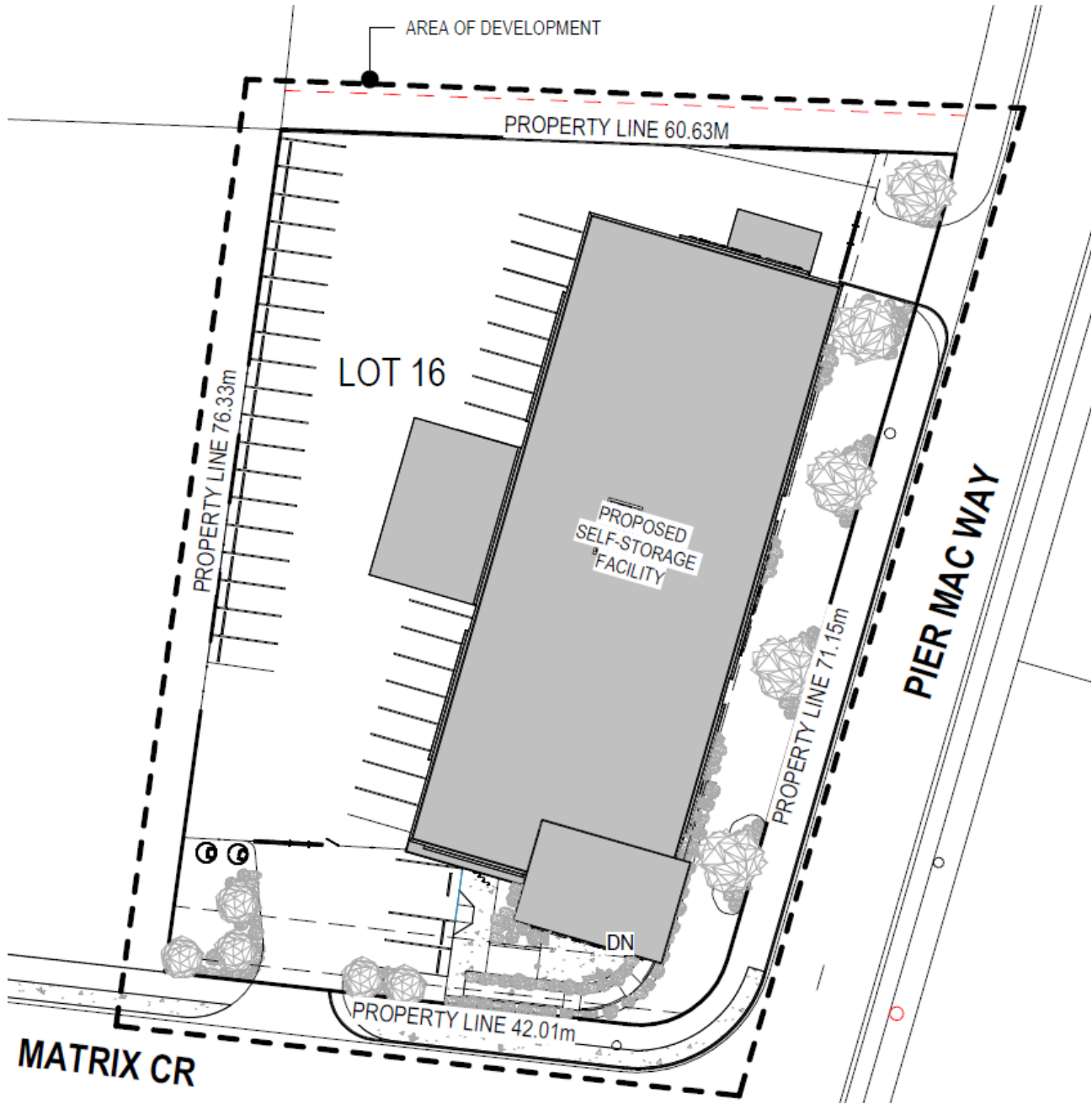


City of Kelowna

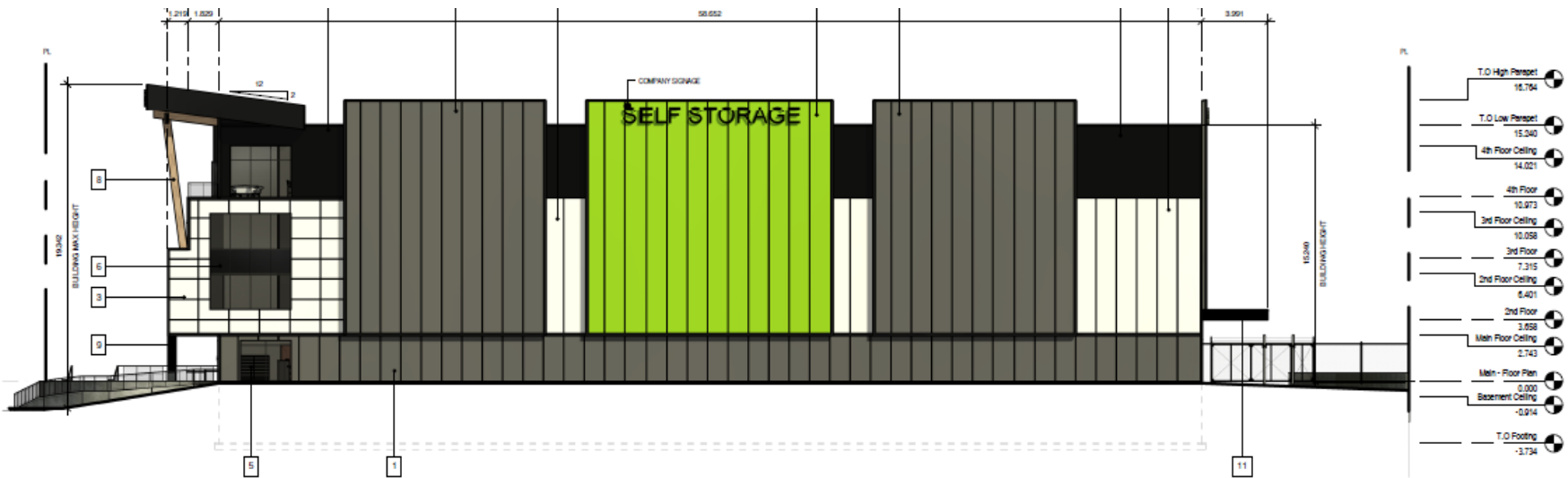
Project/technical details

- ▶ The proposal is a 4-storey building
- ▶ Proposed Design includes gross floor area of 6,568m²
- ▶ Access of Pier Mac Way and Matrix Cres
- ▶ Complies with Development Regulations of CD15 (industrial) zone.

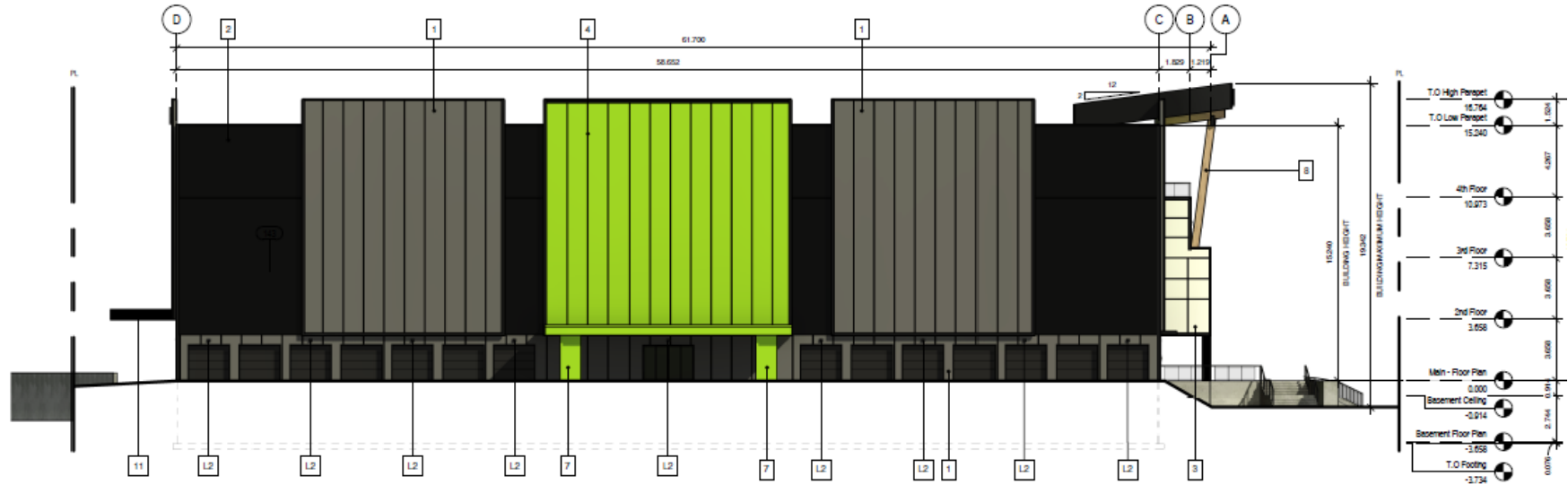
Site Plan



Elevations



1 East (Front) Elevation
A105.1 1:130

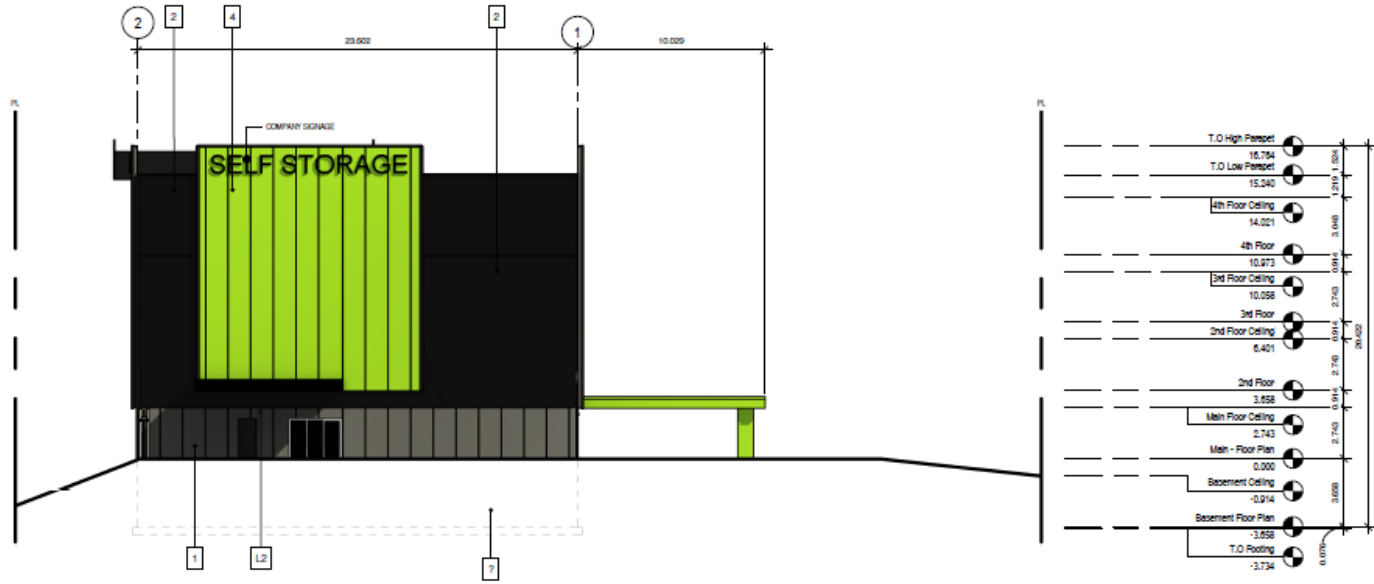


2 West (Rear) Elevation
A105.1 1:130

Elevations



1 South Elevation
A105.2 1:130



2 North Elevation
A105.2 1:130

Renderings



City of Kelowna

Landscape Plan



Staff Recommendation

- ▶ Staff recommend support of the Development Permit
 - ▶ Consistent with OCP urban design guidelines for industrial developments.
 - ▶ Will meet the intent of the Airport Business Park.
 - ▶ The building will meet all Development Regulations within the CD15 Zone.



Conclusion of Staff Remarks