

CLIENT

Peterson

COPYRIGHT
This drawing is the property of Peterson Architects (Canada) Inc. and is not to be reproduced or used in any way without the written consent of Peterson Architects (Canada) Inc. The client is responsible for the accuracy of the information provided in this drawing. Peterson Architects (Canada) Inc. is not responsible for the accuracy of the information provided in this drawing. Peterson Architects (Canada) Inc. is not responsible for the accuracy of the information provided in this drawing.

ISSUES	No.	DESCRIPTION	DATE
A	1	TRRS RESPONSE PACKAGE	2022.02.02

KEYPLAN

CONSULTANTS

SEAL

PRIME CONSULTANT

 ARCHITECTS (CANADA) INC.
 100-1101 Ellis Street
 Kelowna, BC V1Y 1Z3, Canada
 Tel: 250.860.9452
 ibigroup.com

PROJECT
DILWORTH CENTRE
 #2338 HIGHWAY 97N
 KELOWNA, BC
 V1X 4H9

PROJECT NO:
133304

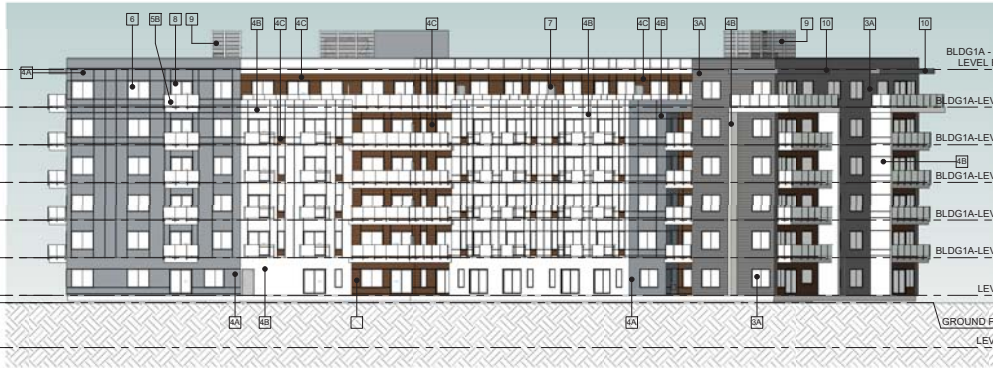
DRAWN BY: Author	CHECKED BY: LM
PROJECT MGR: NG	APPROVED BY: Approver

SHEET TITLE
BUILDING ELEVATIONS- 1A

SHEET NUMBER A3.02 - PH1	ISSUE A
-----------------------------	------------



1
A3.02 - PH1
Building 1A - East
Scale: 1/16" = 1'-0"



2
A3.02 - PH1
Building 1A - North
Scale: 1/16" = 1'-0"

SCHEDULE B

This forms part of application

DP21-0155

Planner Initials
WM

City of
Kelowna
 DEVELOPMENT PLANNING



KEYNOTE - EXTERIOR ELEVATIONS	
TYPE	DESCRIPTION
1	CURTAIN WALL - STOREFRONT GLAZING SYSTEM
3A	STANDARD FULL BRICK CLADDING - DARK GREY
4A	HARDIE PANEL SYSTEM - LIGHT GREY
4B	HARDIE PANEL SYSTEM - WHITE
4C	HARDIE PANEL SYSTEM - WOOD ACCENT, CHOCOLATE ASPEN
5A	GLAZED ALUMINUM GUARDRAIL - BLACK POWDER COAT
5B	GLAZED ALUMINUM JULETTE GUARDRAIL - BLACK POWDER COAT
6	PUNCHED WINDOW SYSTEM - BLACK POWDER COAT
7	FROSTED GLASS PRIVACY SCREEN
8	GLAZED SLIDING DOOR
9	ROOF SCREENING
10	CANOPY



3
A3.02 - PH1
Building 1A - West
Scale: 1/16" = 1'-0"



4
A3.02 - PH1
Building 1A - South
Scale: 1/16" = 1'-0"

CLIENT

Peterson

COPYRIGHT
 This document is the property of the Architect. It is not to be reproduced or distributed in any manner other than authorized by the Architect. The Architect assumes no responsibility for the construction of the building or for the safety of the building. The Architect is not responsible for the design of the building or for the safety of the building. The Architect is not responsible for the design of the building or for the safety of the building. The Architect is not responsible for the design of the building or for the safety of the building.

ISSUES

No.	DESCRIPTION	DATE
A	TR5 RESPONSE PACKAGE	2022.02.02

KEYPLAN

LEVEL	GEODETIC
BLDG1B-ROOF LEVEL BP/IFT	1291.11
BLDG1B-LEVEL 06	1280.84
BLDG1B-LEVEL 05	1270.57
BLDG1B-LEVEL 04	1260.29
BLDG1B-LEVEL 03	1250.02
BLDG1B-LEVEL 02	1239.75
LEVEL 01	1225.75
GROUND FLOOR	1223.75
LEVEL P1	1211.50
BLDG1B-LEVEL 01	369.266

CONSULTANTS

TYPE	DESCRIPTION
1	CURTAIN WALL - STOREFRONT GLAZING SYSTEM
3A	STANDARD FULL BRICK CLADDING - DARK GREY
4A	HARDIE PANEL SYSTEM - LIGHT GREY
4B	HARDIE PANEL SYSTEM - WHITE
4C	HARDIE PANEL SYSTEM - WOOD ACCENT, CHOCOLATE ASPEN
5A	GLAZED ALUMINUM GUARDRAIL - BLACK POWDER COAT
5B	GLAZED ALUMINUM JULIETTE GUARDRAIL - BLACK POWDER COAT
6	PUNCHED WINDOW SYSTEM - BLACK POWDER COAT
7	FROSTED GLASS PRIVACY SCREEN
8	GLAZED SLIDING DOOR
9	ROOF SCREENING
10	CANOPY

SEAL

PRIME CONSULTANT
IBI GROUP ARCHITECTS (CANADA) INC.
 100-1025 Ellis Street
 Kelowna, BC V1Y 1Z5, Canada
 Tel: 250.860.3452
 ibigroup.com

PROJECT
DILWORTH CENTRE
 #2336 HIGHWAY 97N
 KELOWNA, BC
 V1X 4H9

PROJECT NO.
 133304

DRAWN BY:
 Author

CHECKED BY:
 LHM

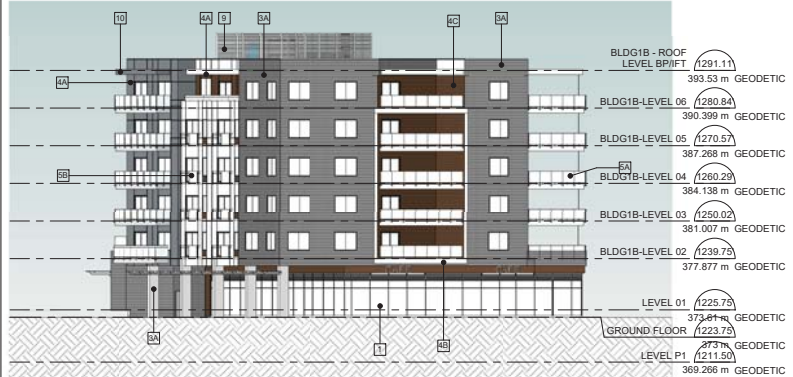
PROJECT MGR:
 NG

APPROVED BY:
 Approver

SHEET TITLE
BUILDING ELEVATIONS- 1B

SHEET NUMBER
 A3.03 - PH1

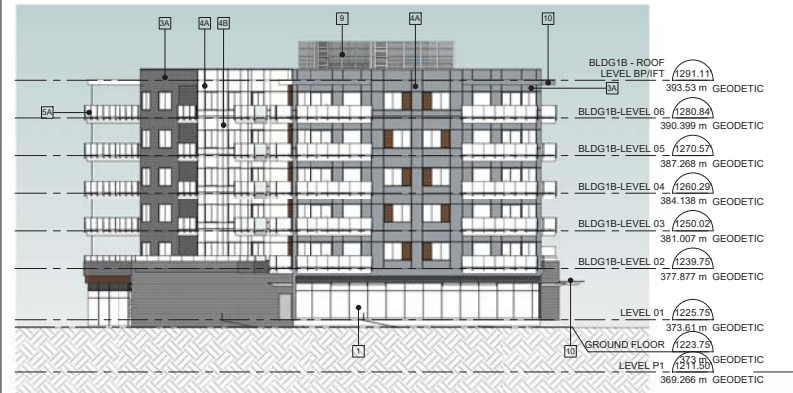
ISSUE
 A



1 Building 1B - East
 Scale: 1/16" = 1'-0"



2 Building 1B - North
 Scale: 1/16" = 1'-0"

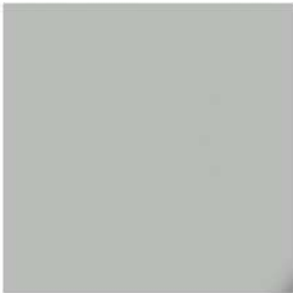


3 Building 1B - West
 Scale: 1/16" = 1'-0"



4 Building 1B - South
 Scale: 1/16" = 1'-0"

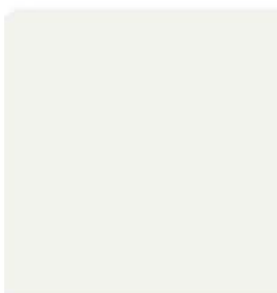
Phase 1 Material Palette



CEMENT BOARD PANELS:
 Manufacturer: James Hardie
 Product: Reveal Panel System
 Colour: Coventry Gray;
 Benjamin Moore HC-169



BRICK
 Manufacturer: Endicott
 Colour: Manganese Ironspot
 Finish: Velour
 Size: Standard



CEMENT BOARD PANELS:
 Manufacturer: James Hardie
 Product: Reveal Panel System
 Colour: White Dove
 Benjamin Moore OC-17



**Hardie Panel Wood
 Tone Accent**



**Powder Coated
 Aluminum Windows
 / Railings**



CLIENT

Peterson

COPYRIGHT
 This document is the property of IBI Group. It is not to be reproduced or distributed in any manner without the written consent of IBI Group. IBI Group reserves the right to modify or amend this document without notice. IBI Group will not be responsible for any errors or omissions in this document or the results of its use. IBI Group shall not be held liable for any damages or losses resulting from the use of this document. IBI Group reserves the right to modify or amend this document without notice.

IBI Group Architects (Canada) Inc.
 100-11111 101st Avenue, Edmonton, Alberta T5A 0K6, Canada
 Tel: 780.443.3333

ISSUES		
No.	DESCRIPTION	DATE
A	TRS RESPONSE PACKAGE	2022.02.02

KEYPLAN

CONSULTANTS

SEAL

PRIME CONSULTANT
 **IBI GROUP ARCHITECTS (CANADA) INC.**
 100-11111 101st Avenue
 Edmonton, BC T5A 0K6, Canada
 Tel: 780.443.3333
 ibigroup.com

PROJECT
DILWORTH CENTRE
 #2330 HIGHWAY 97N
 KELOWNA, BC
 V1X 4H9

PROJECT NO:
 133304

DRAWN BY: Author	CHECKED BY: LM
PROJECT MGR: NG	APPROVED BY: Approver

SHEET TITLE
MATERIAL PALETTE

SHEET NUMBER A3.01- PH1	ISSUE A
-----------------------------------	-------------------

COPYRIGHT
 This drawing has been prepared solely for the intended use. Any reproduction or distribution for any purpose other than authorized by IBI Group is forbidden. Written dimensions shall have precedence over scaled dimensions. Contractors shall verify and be responsible for all dimensions and conditions on the job, and IBI Group shall be informed of any variations from the dimensions and conditions shown on the drawing. Shop drawings shall be submitted to IBI Group for general conformance before proceeding with fabrication.

IBI Group Architects (Canada) Inc.
 is a member of the IBI Group of companies

ISSUES	No.	DESCRIPTION	DATE
A	1	TRS RESPONSE PACKAGE	2022.02.02

KEYPLAN

CONSULTANTS

SEAL



PRIME CONSULTANT
IBI GROUP ARCHITECTS (CANADA) INC.
 202-1333 Ellis Street,
 Kelowna, BC V1Y 1Z9, Canada
 Tel 250 860 3432
 ibigroup.com

PROJECT
DILWORTH CENTRE
 #2339 HIGHWAY 97N
 KELOWNA, BC
 V1X 4H9

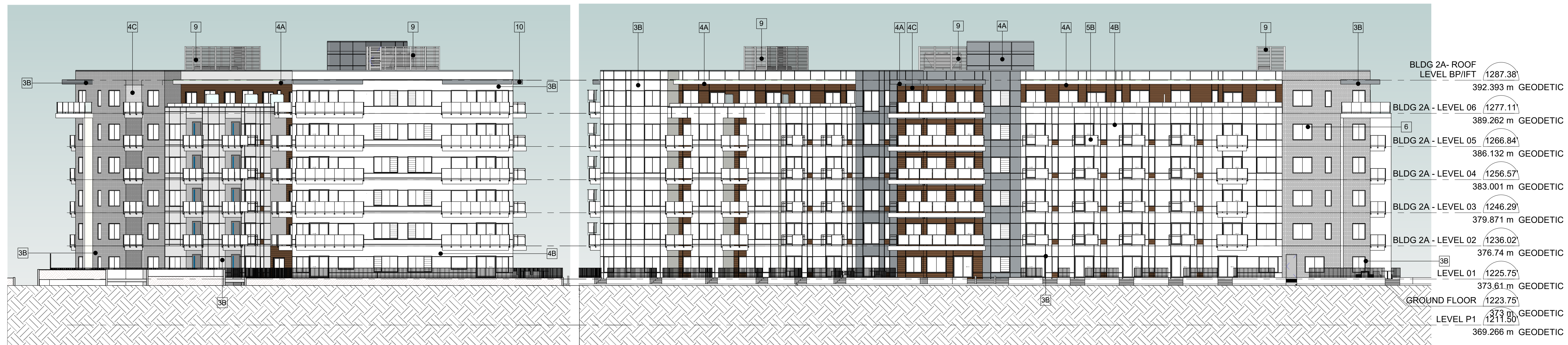
PROJECT NO:
 133304

DRAWN BY: Author	CHECKED BY: LM
PROJECT MGR: NG	APPROVED BY: Approver

SHEET TITLE
BUILDING ELEVATIONS- 2A

SHEET NUMBER
A3.02 - PH2

ISSUE
A



BLDG 2A- ROOF LEVEL BP/IFT	(1287.38)	392.393 m	GEODETIC
BLDG 2A - LEVEL 06	(1277.11)	389.262 m	GEODETIC
BLDG 2A - LEVEL 05	(1266.84)	386.132 m	GEODETIC
BLDG 2A - LEVEL 04	(1256.57)	383.001 m	GEODETIC
BLDG 2A - LEVEL 03	(1246.29)	379.871 m	GEODETIC
BLDG 2A - LEVEL 02	(1236.02)	376.74 m	GEODETIC
LEVEL 01	(1225.75)	373.61 m	GEODETIC
GROUND FLOOR	(1223.75)	373 m	GEODETIC
LEVEL P1	(1211.50)	369.266 m	GEODETIC

1 Building 2A - East
 Scale: 1/16" = 1'-0"

2 Building 2A- North
 Scale: 1/16" = 1'-0"

SCHEDULE B

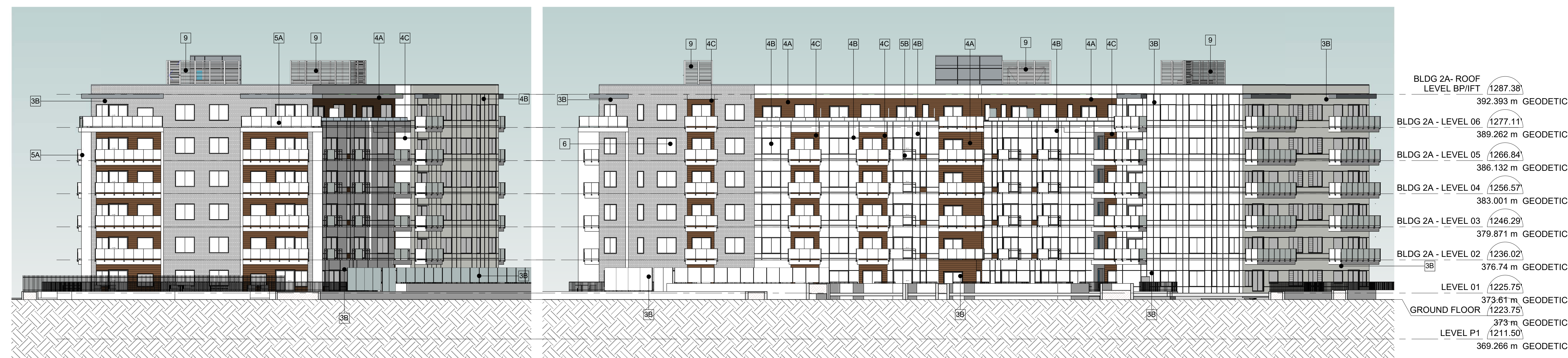
This forms part of application
 # DP21-0155



City of
Kelowna
 DEVELOPMENT PLANNING

Planner
 Initials
WM

KEYNOTE - EXTERIOR ELEVATIONS	
TYPE	DESCRIPTION
3B	STANDARD FULL BRICK CLADDING - WHITE
4A	HARDIE PANEL SYSTEM - LIGHT GREY
4B	HARDIE PANEL SYSTEM - WHITE
4C	HARDIE PANEL SYSTEM - WOOD ACCENT, CHOCOLATE ASPEN
5A	GLAZED ALUMINUM GUARDRAIL - BLACK POWDER COAT
5B	GLAZED ALUMINUM JULIETTE GUARDRAIL - BLACK POWDER COAT
6	PUNCHED WINDOW SYSTEM - BLACK POWDER COAT
8	GLAZED SLIDING DOOR
9	ROOF SCREENING
10	CANOPY
EXT	



BLDG 2A- ROOF LEVEL BP/IFT	(1287.38)	392.393 m	GEODETIC
BLDG 2A - LEVEL 06	(1277.11)	389.262 m	GEODETIC
BLDG 2A - LEVEL 05	(1266.84)	386.132 m	GEODETIC
BLDG 2A - LEVEL 04	(1256.57)	383.001 m	GEODETIC
BLDG 2A - LEVEL 03	(1246.29)	379.871 m	GEODETIC
BLDG 2A - LEVEL 02	(1236.02)	376.74 m	GEODETIC
LEVEL 01	(1225.75)	373.61 m	GEODETIC
GROUND FLOOR	(1223.75)	373 m	GEODETIC
LEVEL P1	(1211.50)	369.266 m	GEODETIC

3 Building 2A - West
 Scale: 1/16" = 1'-0"

4 Building 2A - South
 Scale: 1/16" = 1'-0"

COPYRIGHT
 This drawing has been prepared solely for the intended use. Any reproduction or distribution for any purpose other than authorized by IBI Group is forbidden. Written dimensions shall have precedence over scaled dimensions. Contractors shall verify and be responsible for all dimensions and conditions on the job, and IBI Group shall be informed of any variations from the dimensions and conditions shown on the drawing. Shop drawings shall be submitted to IBI Group for general conformance before proceeding with fabrication.

IBI Group Architects (Canada) Inc.
 is a member of the IBI Group of companies.

ISSUES		
No.	DESCRIPTION	DATE
A	TRS RESPONSE PACKAGE	2022.02.02

CONSULTANTS

SEAL



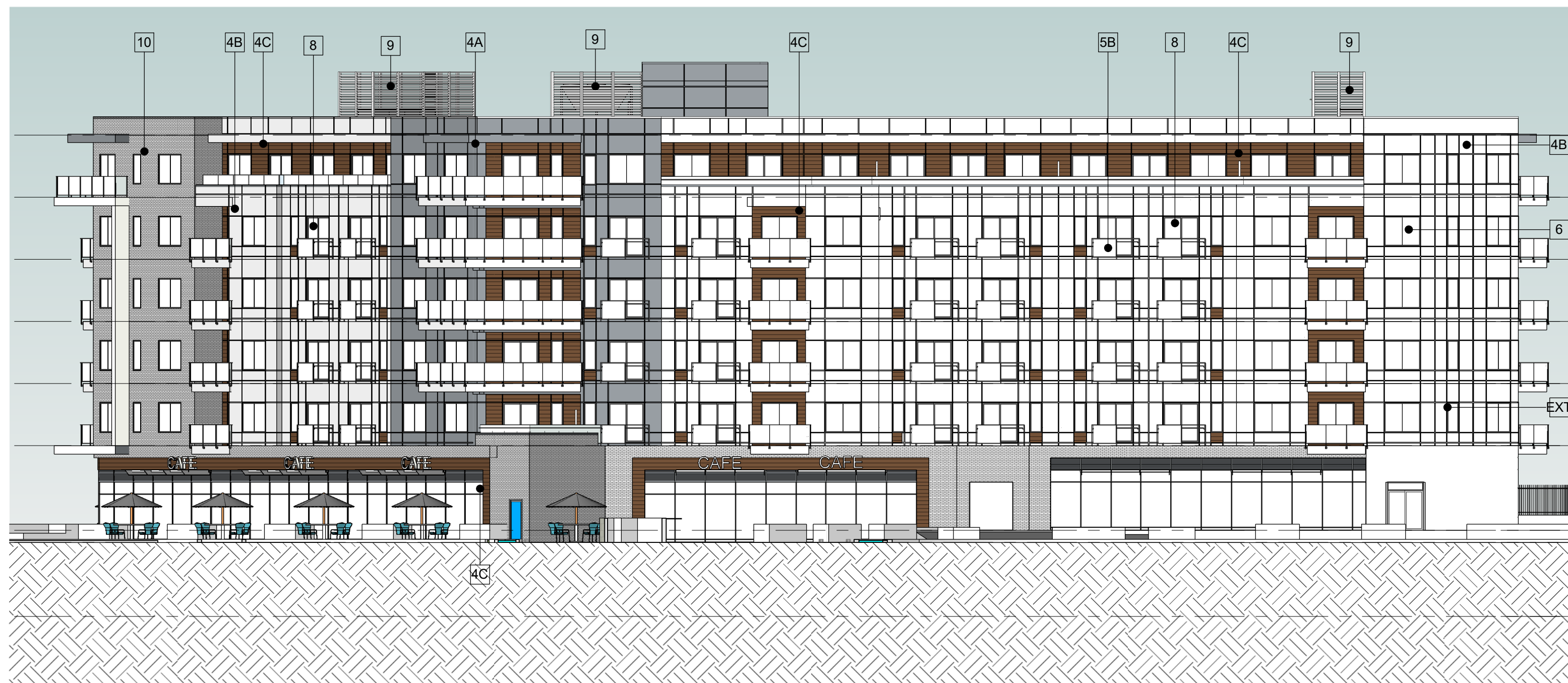
PRIME CONSULTANT
IBI GROUP ARCHITECTS (CANADA) INC.
 202-1353 Ellice Street,
 Kelowna, BC V1Y 1Z9, Canada
 Tel: 250 860 3432
 ibigroup.com

PROJECT
DILWORTH CENTRE
 #2339 HIGHWAY 97N
 KELOWNA, BC
 V1X 4H9

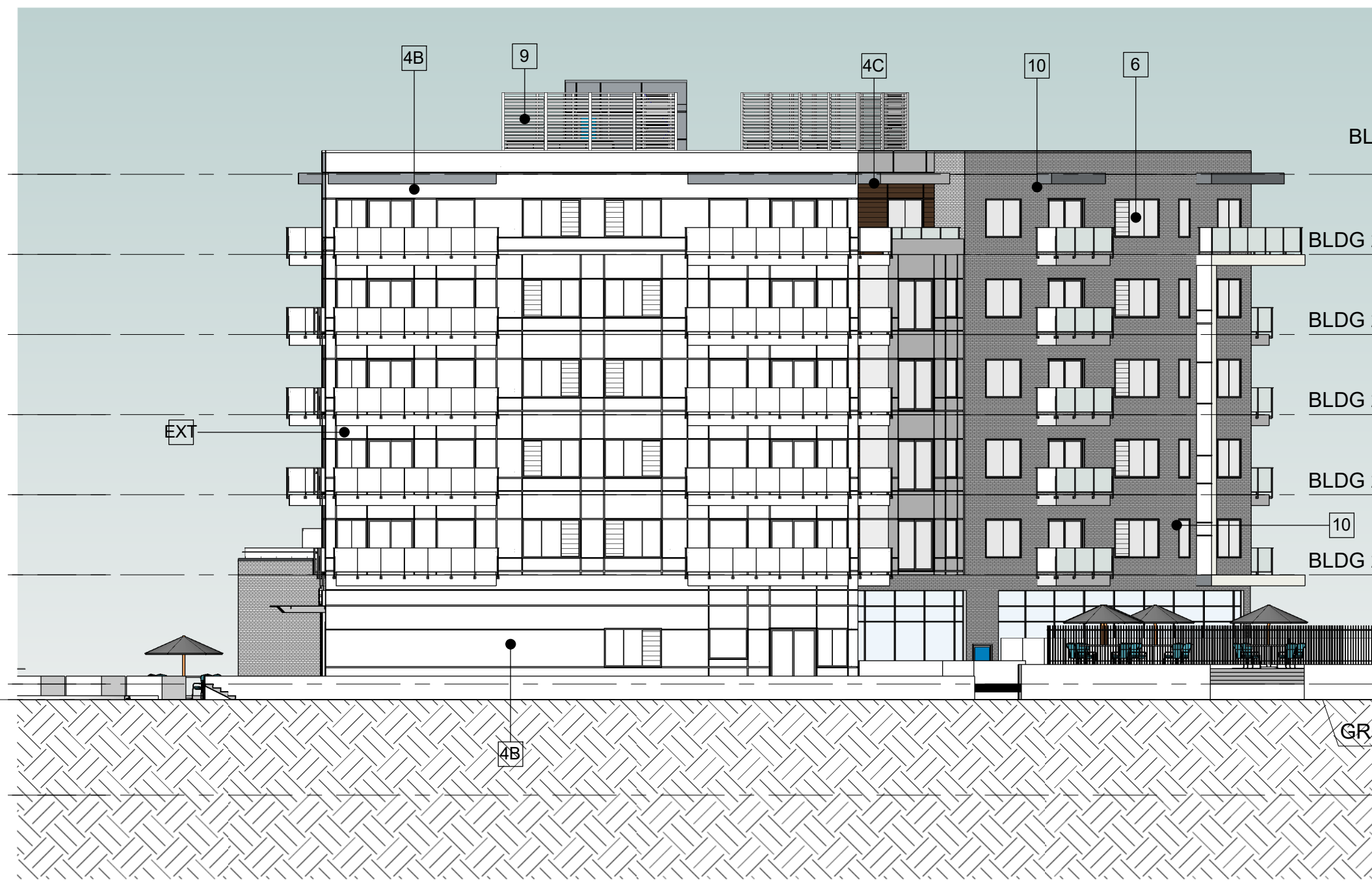
PROJECT NO:
 133304
 DRAWN BY: **LM** CHECKED BY:
 PROJECT MGR: **NG** APPROVED BY:
Approver

SHEET TITLE
BUILDING ELEVATIONS- 2B

SHEET NUMBER **A3.03 - PH2** ISSUE **A**



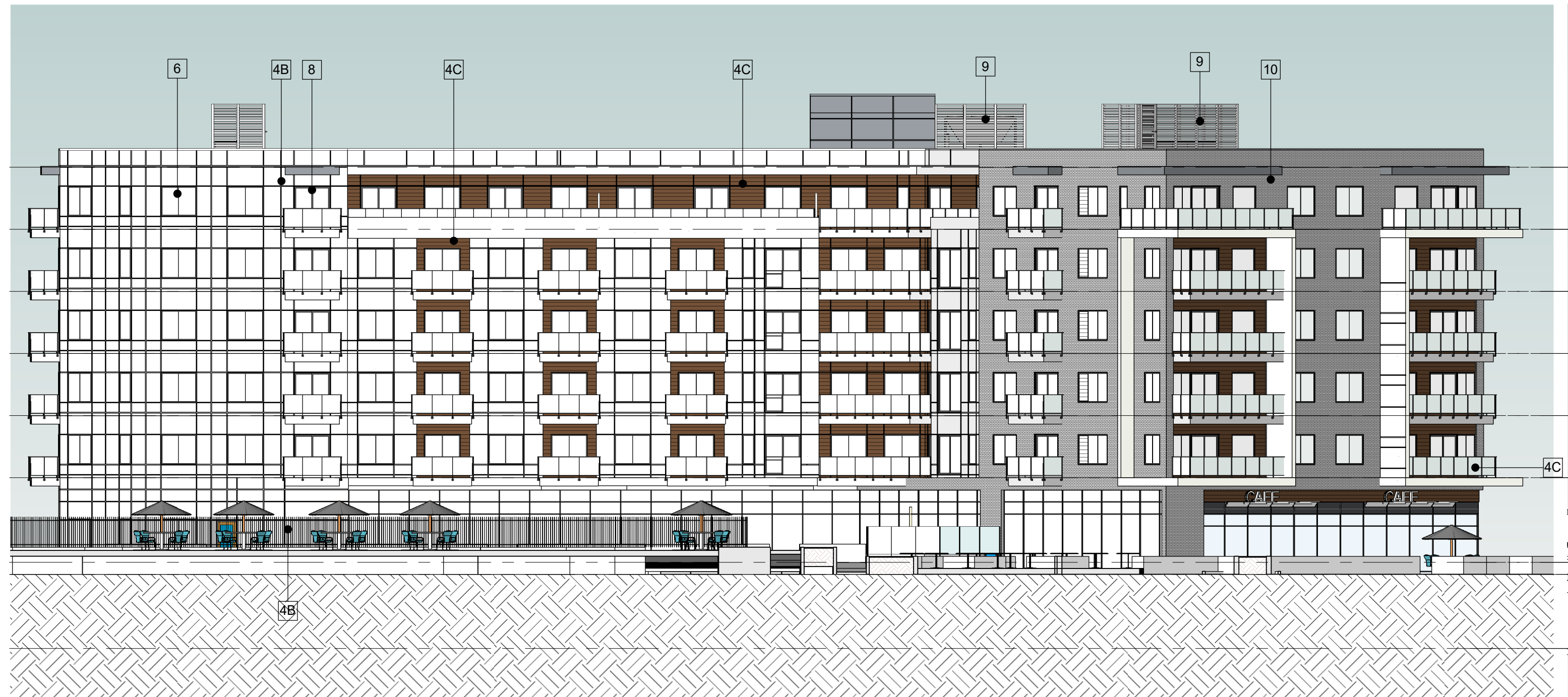
1 Building 2B - East
 A3.03 - PH2 Scale: 1/16" = 1'-0"



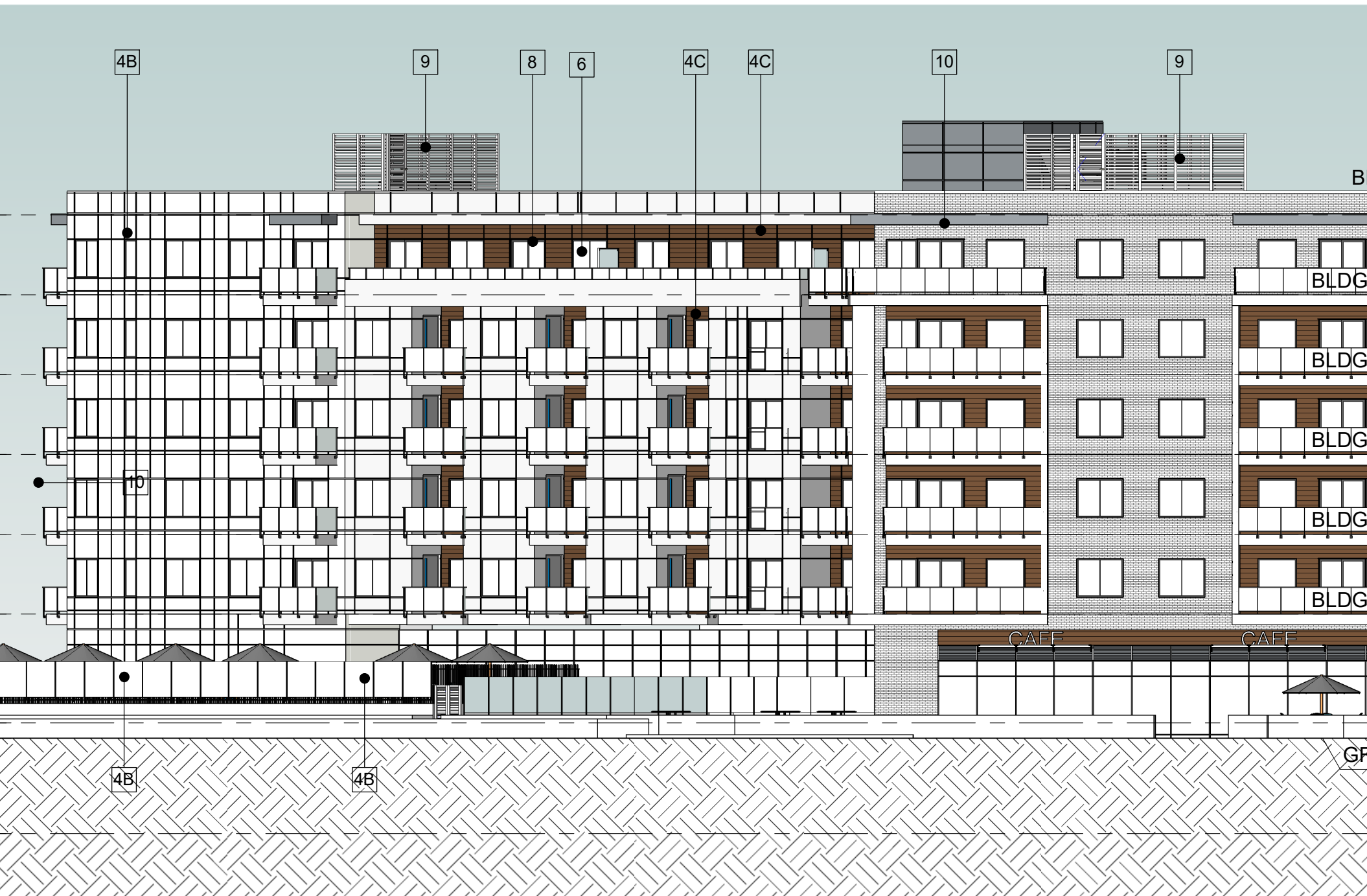
2 Building 2B - North
 A3.03 - PH2 Scale: 1/16" = 1'-0"

KEYNOTE - EXTERIOR ELEVATIONS	
TYPE	DESCRIPTION
3B	STANDARD FULL BRICK CLADDING - WHITE
4A	HARDIE PANEL SYSTEM - LIGHT GREY
4B	HARDIE PANEL SYSTEM - WHITE
4C	HARDIE PANEL SYSTEM - WOOD ACCENT, CHOCOLATE ASPEN
5A	GLAZED ALUMINUM GUARDRAIL - BLACK POWDER COAT
5B	GLAZED ALUMINUM JULIETTE GUARDRAIL - BLACK POWDER COAT
6	PUNCHED WINDOW SYSTEM - BLACK POWDER COAT
8	GLAZED SLIDING DOOR
9	ROOF SCREENING
10	CANOPY
EXT	

BLDG 2B - ROOF LEVEL BP/I/FT	(1291.11)	393.53 m GEODETIC
BLDG 2B - LEVEL 06	(1280.84)	390.399 m GEODETIC
BLDG 2B - LEVEL 05	(1270.57)	387.268 m GEODETIC
BLDG 2B - LEVEL 04	(1260.29)	384.138 m GEODETIC
BLDG 2B - LEVEL 03	(1250.02)	381.007 m GEODETIC
BLDG 2B - LEVEL 02	(1239.75)	377.877 m GEODETIC
LEVEL 01	(1225.75)	373.61 m GEODETIC
GROUND FLOOR	(1223.75)	373 m GEODETIC
LEVEL P1	(1211.50)	369.266 m GEODETIC



3 Building 2B - West
 A3.03 - PH2 Scale: 1/16" = 1'-0"



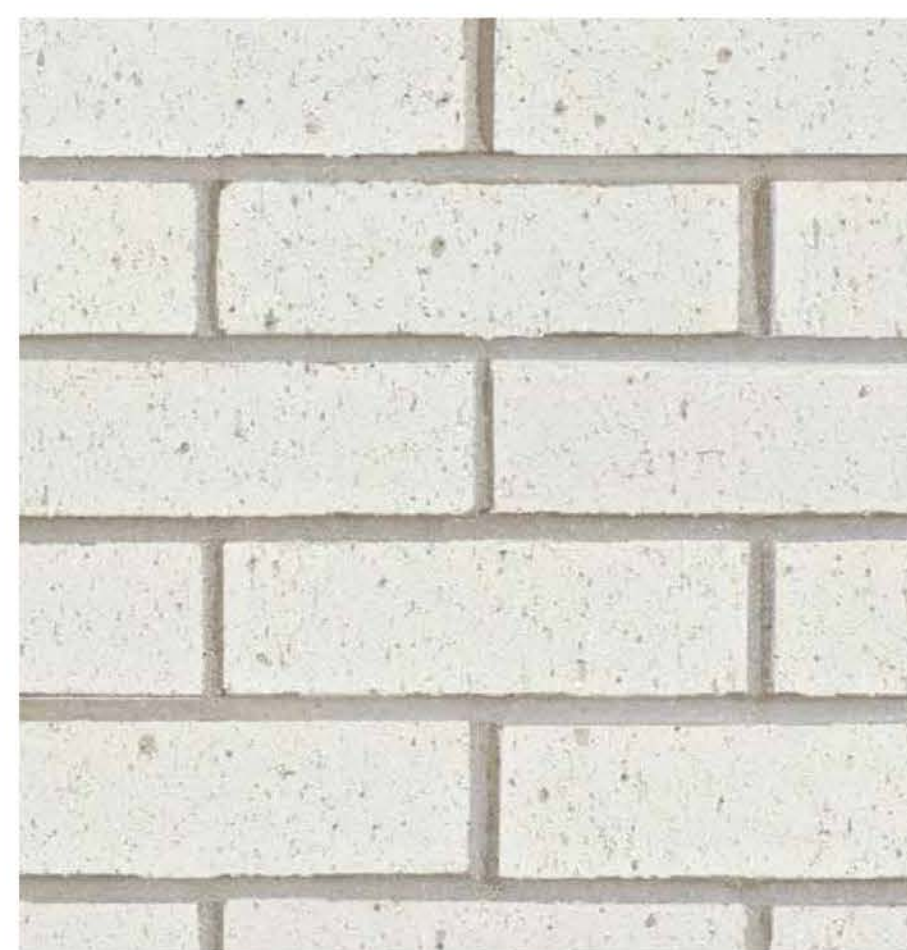
4 Building 2B - South
 A3.03 - PH2 Scale: 1/16" = 1'-0"

BLDG 2B - ROOF LEVEL BP/I/FT	(1291.11)	393.53 m GEODETIC
BLDG 2B - LEVEL 06	(1280.84)	390.399 m GEODETIC
BLDG 2B - LEVEL 05	(1270.57)	387.268 m GEODETIC
BLDG 2B - LEVEL 04	(1260.29)	384.138 m GEODETIC
BLDG 2B - LEVEL 03	(1250.02)	381.007 m GEODETIC
BLDG 2B - LEVEL 02	(1239.75)	377.877 m GEODETIC
LEVEL 01	(1225.75)	373.61 m GEODETIC
GROUND FLOOR	(1223.75)	373 m GEODETIC
LEVEL P1	(1211.50)	369.266 m GEODETIC

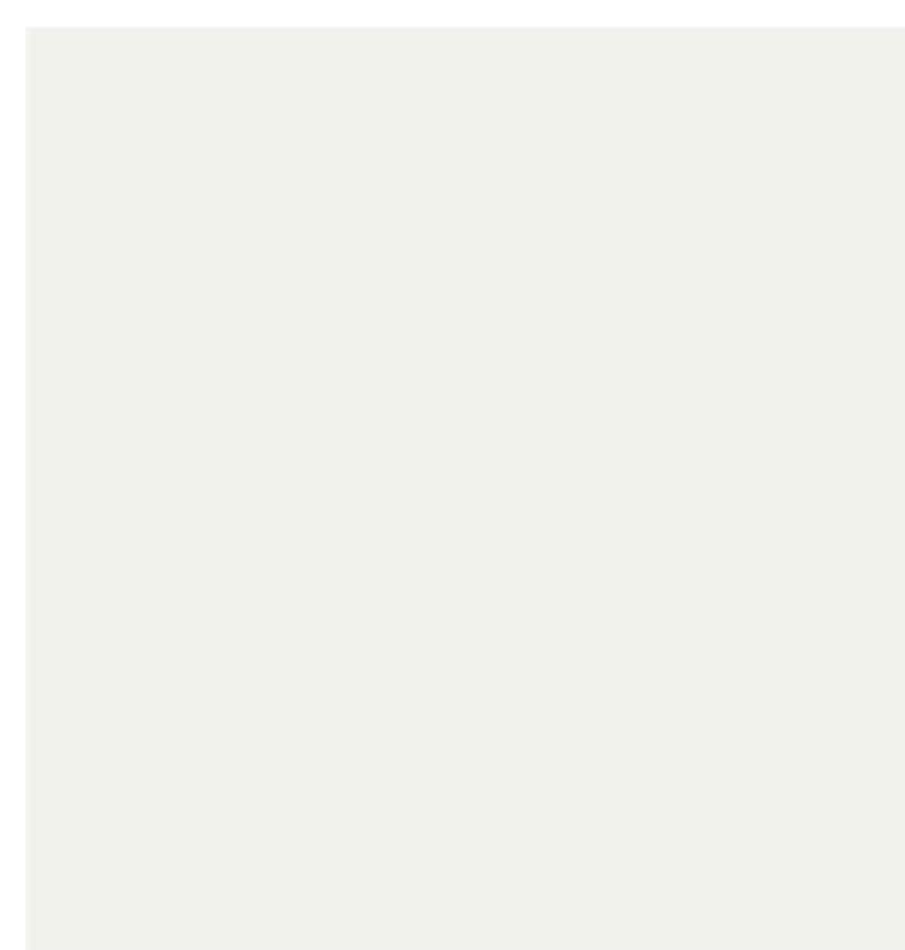
Phase 2 Material Palette



CEMENT BOARD PANELS:
 Manufacturer: James Hardie
 Product: Reveal Panel System
 Colour: Charcoal Slate
 Benjamin Moore HC-178



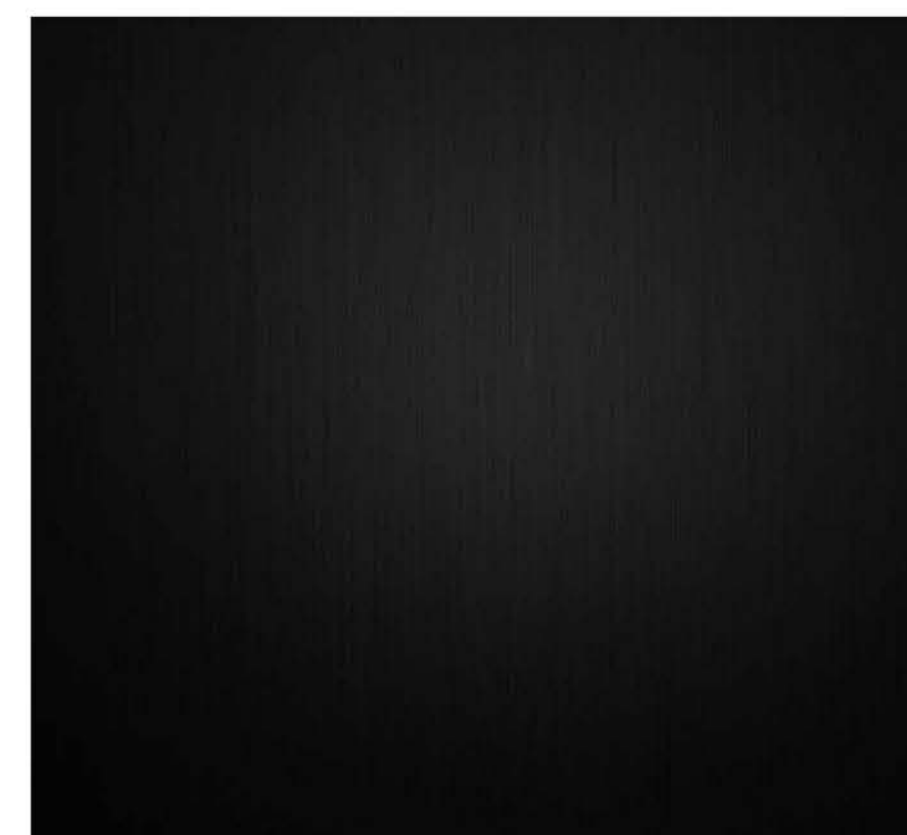
BRICK
 Manufacturer: Interstate
 Colour: Arctic White



CEMENT BOARD PANELS:
 Manufacturer: James Hardie
 Product: Reveal Panel System
 Colour: White Dove
 Benjamin Moore OC-17



**Hardie Panel Wood
 Tone Accent**



**Powder Coated
 Aluminum Windows
 / Railings**



CLIENT

Peterson

COPYRIGHT
 This drawing has been prepared solely for the intended use. No reproduction or distribution for any purpose other than authorized by IBI Group is forbidden. Written dimensions shall have precedence over scaled dimensions. Contractors shall verify and be responsible for all dimensions and conditions on the job, and IBI Group shall be informed of any variations from the dimensions and conditions shown on the drawing. Shop drawings shall be submitted to IBI Group for general conformance before proceeding with fabrication.

IBI Group Architects (Canada) Inc.
 is a member of the IBI Group of companies

ISSUES		
No.	DESCRIPTION	DATE
A	TRS RESPONSE PACKAGE	2022.02.02

KEYPLAN

CONSULTANTS

SEAL



2022-03-29

PRIME CONSULTANT
IBI GROUP ARCHITECTS (CANADA) INC.
 202-1353 Ellis Street,
 Kelowna, BC V1Y 1Z9, Canada
 tel 250 860 3432
 ibigroup.com

PROJECT
DILWORTH CENTRE
 #2339 HIGHWAY 97N
 KELOWNA, BC
 V1X 4H9

PROJECT NO:
 133304

DRAWN BY: Author	CHECKED BY: LM
PROJECT MGR: NG	APPROVED BY: Approver

SHEET TITLE
 MATERIAL PALETTE

SHEET NUMBER A3.01- PH2	ISSUE A
-----------------------------------	-------------------