



North End Plan Update Phase 2

April, 2022



Purpose

- ▶ Receive an update on the progress of the North End Plan and next steps
- ▶ Endorse the draft Vision & Objectives in principle



Background

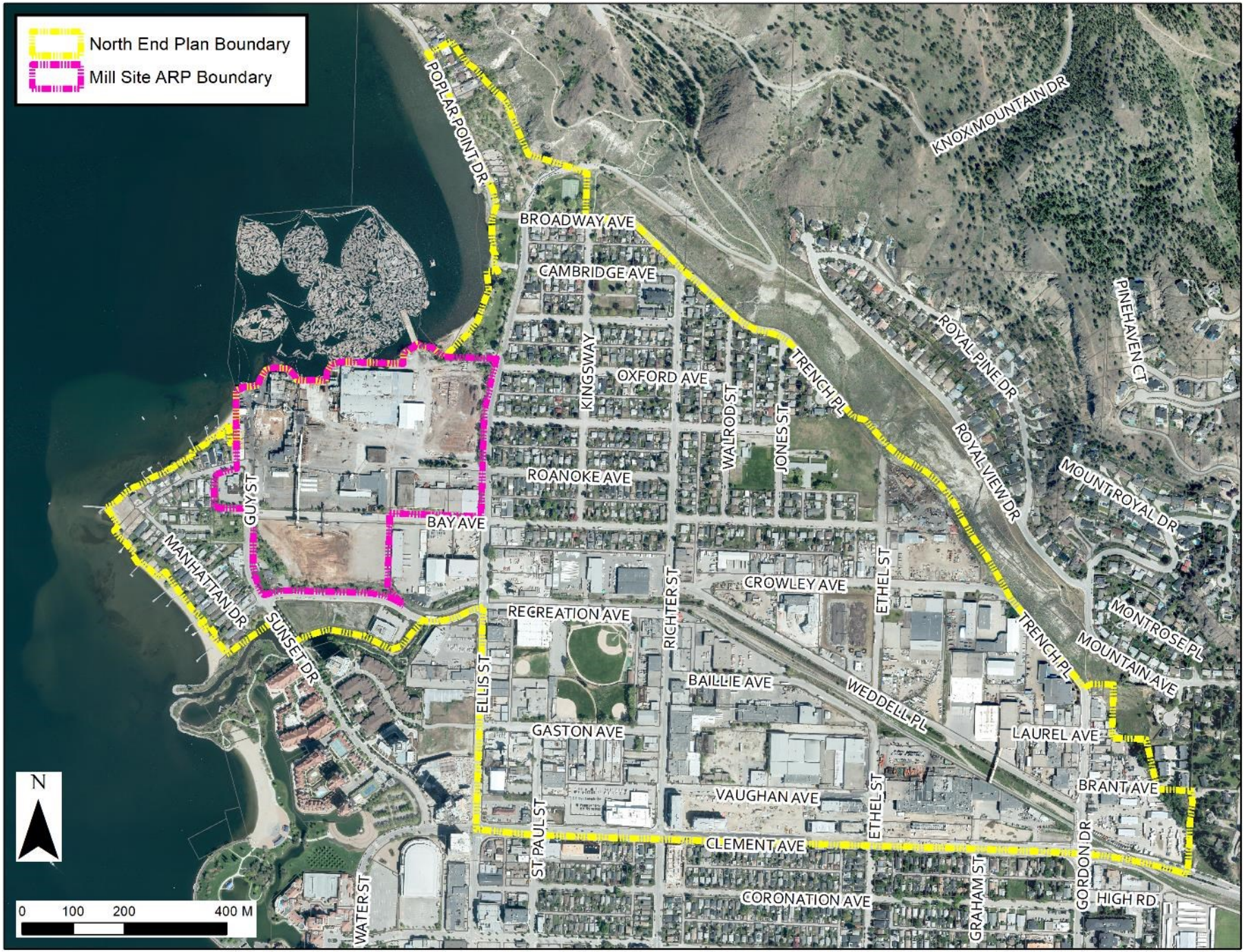
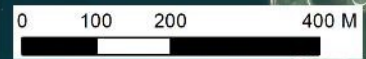
- ▶ North End Plan (NEP) launched July 12, 2021
- ▶ NEP intended to guide and manage the evolution of the North End over the next 20 years+
 - ▶ Land use mix and housing
 - ▶ Heritage
 - ▶ Transportation network
 - ▶ Utility servicing
 - ▶ Parks, public spaces
 - ▶ Community needs





North End Plan Boundary

Mill Site ARP Boundary



POPLAR POINT DR

BROADWAY AVE

CAMBRIDGE AVE

OXFORD AVE

ROANOKE AVE

BAY AVE

REGREATION AVE

GASTON AVE

VAUGHAN AVE

CLEMENT AVE

CORONATION AVE

KNOX MOUNTAIN DR

PINEHAME CT

ROYAL PINE DR

ROYAL VIEW DR

MOUNT ROYAL DR

MONTROSE PL

MOUNTAIN AVE

LAUREL AVE

BRANT AVE

HIGH RD

MANHATTAN DR

SUNSET DR

WATER ST

GUY ST

ELLIS ST

ST PAUL ST

RICHTER ST

ST PAUL ST

RICHTER ST

WALROD ST

JONES ST

TRENCH PL

CROWLEY AVE

WEDDELL PL

ETHEL ST

ETHEL ST

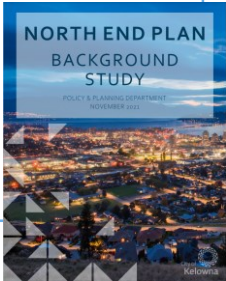
GRAHAM ST

GORDON DR

NEP Process: 4 Phases

1. Background & Context

- Background research on neighborhood
- Launch public engagement
- Council Review



July-
Nov. 2021



2. Issues & Visioning

- Establish the Vision & Objectives
- Public engagement to help establish Vision & Objectives
- **Council Review**



Dec. 2021-
April 2022



3. Neighbourhood Concept Plans

- Develop a series of concept plans
- Subject concept plans to public review
- Choose a preferred concept
- Council Review

April-
Sept. 2022

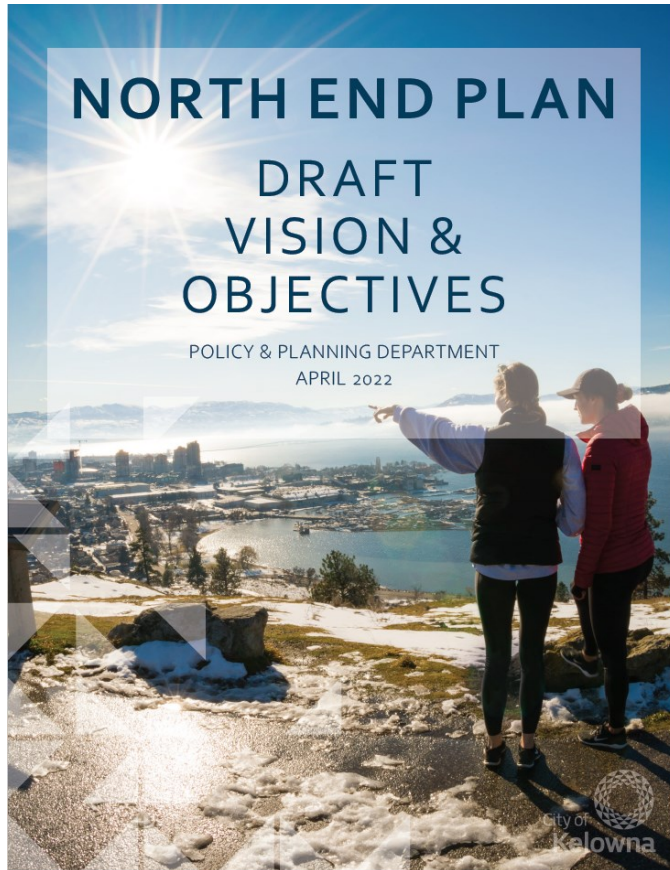


4. Final Plan Development

- Build out a draft plan
- Subject draft plan to public review
- Refine into final plan
- Council Review

Oct. 2021-
March 2023

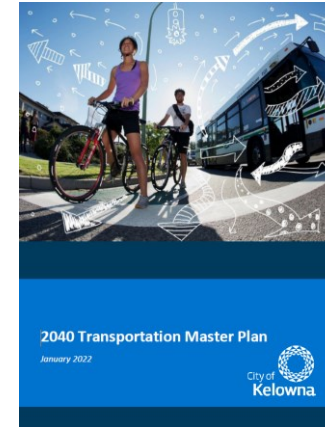
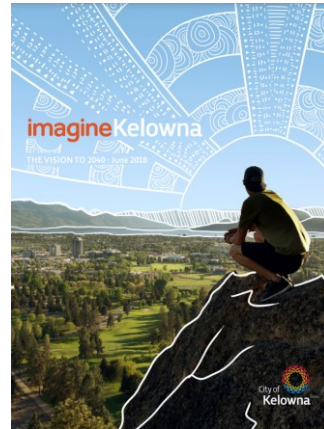
NEP Phase 2 : Issues & Vision



- ▶ Establish Vision & Objectives for Plan Area
 - ▶ Vision: high-level perspective on how the neighborhood will look, feel and function in the future
 - ▶ Objectives: What we hope to achieve with the Plan and why
 - ▶ The 'how' of the objectives to be established in future phases through concept plans and policies

Vision & Objectives Inputs

▶ Existing Plans & Policies



▶ Public Engagement



▶ Staff Technical Review

Public Engagement

How to get involved

Complete a survey



Two surveys are open until February 28.

- [Resident survey](#) - tell us your vision for the neighbourhood. What would make it a great place to live, work and play
- [Business survey](#) - what should the future of business look like in the North End?

Join the discussion



What should the North End look and feel like? Go to the [discussion forum](#), share your thoughts, and see what others are saying.

Or, if you would like to provide feedback on behalf of your group or organization, [email us to request](#) a North End community discussion guide.

Mark the map



Put your [mark on a map of the North End](#) and let the City know what you like about the neighbourhood today, and what you would like to see in the future.



Ask a question

Want to learn more? [Send us a question](#) and we'll get back to you.

Are you interested in shaping the future of the former Tolko Mill Site? Following the City's lead, the Mill Site development team will also be engaging with the public for input on the future of this key waterfront location. To learn about the Mill Site development team's planning process, visit: kelownamillsite.ca

NEP Phase 2 – Public Engagement

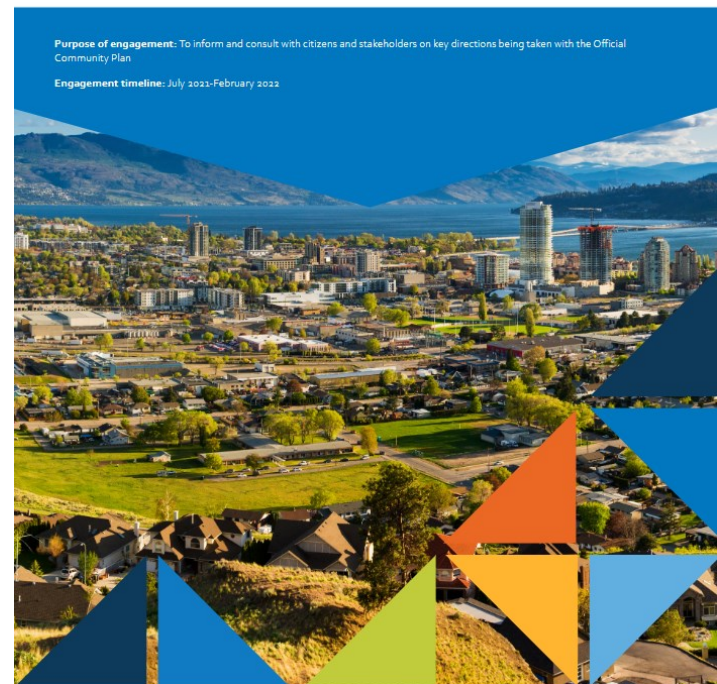


▶ Themes

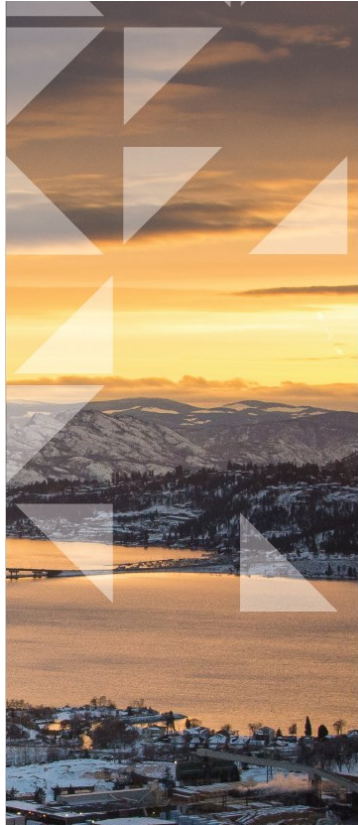
- ▶ Local Businesses and Services
- ▶ Housing Availability and Affordability
- ▶ Waterfront Access
- ▶ Parks and Recreation
- ▶ Walkability and Bikeability
- ▶ Arts, Culture & Heritage

▶ Indigenous Engagement

North End Neighbourhood Plan Engagement summary report: Phase 1-2



NEP Vision



NORTH END NEIGHBOURHOOD VISION

Set at the intersection of mountain, lake and city, the North End is an inclusive urban neighbourhood with an eclectic mix of uses and a distinct sense of identity. Residents of all life stages and incomes choose from a variety of housing options that have expanded and diversified over time. Daily needs are met with a quick walk or roll to a wide range of local shops, restaurants, and community services, while destinations outside the North End are easily accessible by transit. Industrial businesses have continued to adapt to the neighbourhood's changing dynamics and support growing employment and services, while craft industries continue to thrive. A comprehensive parks and public space network—anchored by a continuous waterfront pathway—gives people an opportunity to connect with one another and with nature. Expanding the green space and restoring natural habitat has not only added to the enjoyment of the neighbourhood but has also made it more resilient to climate change. Arts and culture thrive—inspired by rich layers of local history—strengthening the neighbourhood's unique sense of place and identity.

“Set at the intersection of mountain, lake and city, the North End is an inclusive urban neighbourhood with an eclectic mix of uses and a distinct sense of identity.”

NEP Objectives

- ▶ Housing
- ▶ Employment & Commercial Uses
- ▶ Parks & Recreation
- ▶ Arts, Culture & Heritage
- ▶ Transportation
- ▶ Environmental Protection & Climate Resiliency
- ▶ Equity & Inclusion
- ▶ Servicing & Public Utilities
- ▶ Mill Site Design & Integration

Expand the supply and variety of housing types in the North End to help address housing availability, and to ensure residents in the neighbourhood can meet their housing needs at all life stages and circumstances.

Support the growth of neighbourhood-scale, local retail and commercial uses that serve the everyday needs of North End residents.

Increase access to the waterfront through expanded parks and public spaces and connect them with a continuous waterfront pathway.

NEP Next Steps – Phase 3: Concept Plans

- ▶ Use draft Vision & Objectives to develop alternative Concept Plans (Council review)
- ▶ Public engagement to help choose a Preferred Concept
- ▶ Bring Preferred Concept to Council for endorsement
- ▶ Use endorsed Preferred Concept to develop a Draft Plan (Phase 4)

Conclusion

- ▶ NEP Phase 2 – Vision & Objectives complete
- ▶ Next steps: Phase 3 – Concept Plans





Questions?

For more information, visit kelowna.ca.