



Okanagan Lake Shoreline Tenure Applications

Report to Council

10 January 2022

Status

- ▶ Many beaches have existing tenure
- ▶ Seeking application for 33 sites:
 - ▶ New sites
 - ▶ Hobson Beach Park, Sarsons Beach Expansion, Bluebird
 - ▶ Beach Accesses
 - ▶ Dubbin North, Dewdney, West Avenue
 - ▶ Natural Areas
 - ▶ Maude Roxby Marsh

Crown Land Tenure - Beaches



Benefits

Use and Management

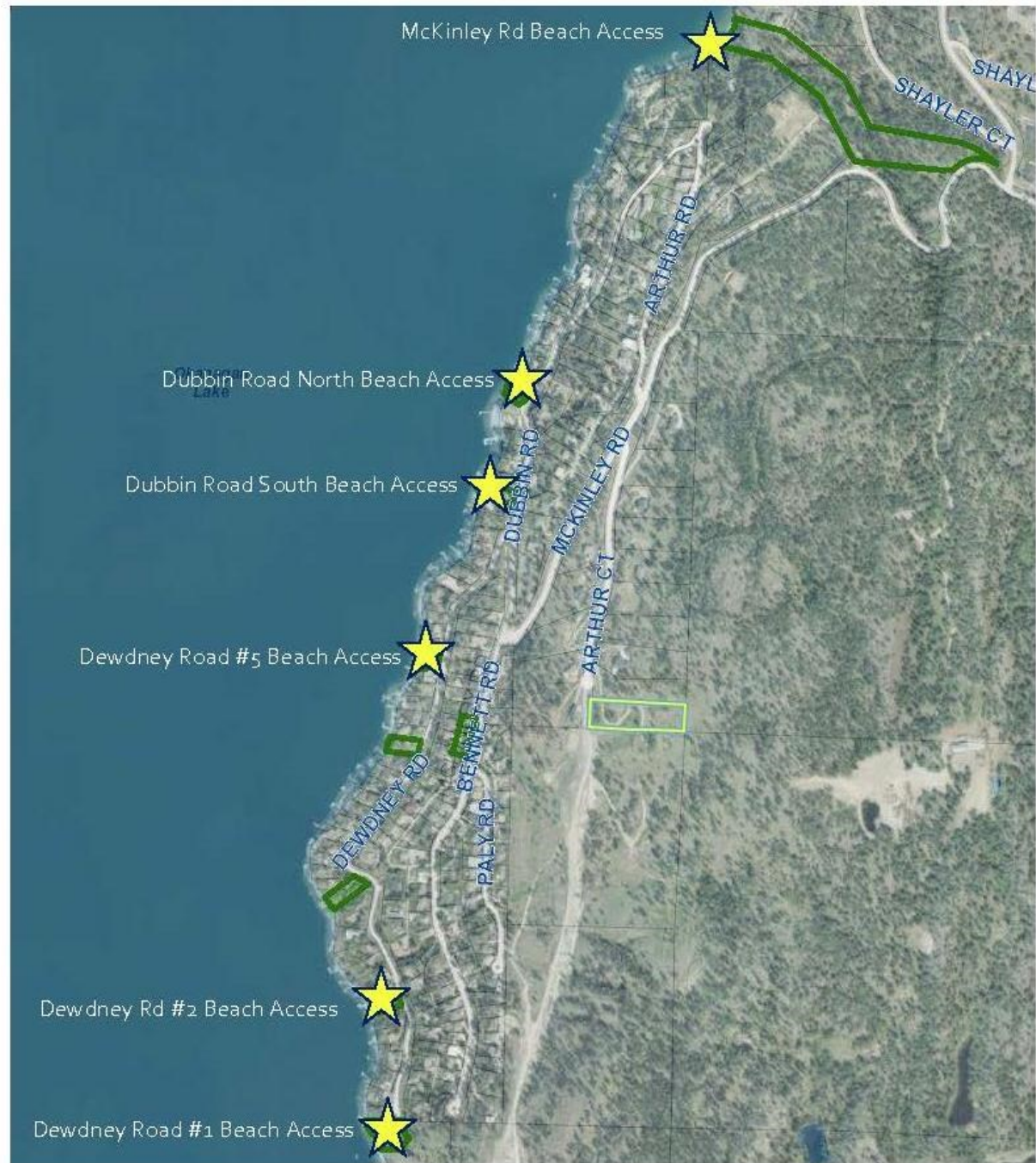
- Recreation
- (e.g. swimming area applications)

Shoreline Projection

- Shoreline erosion protection applications
- (e.g. bioengineering)

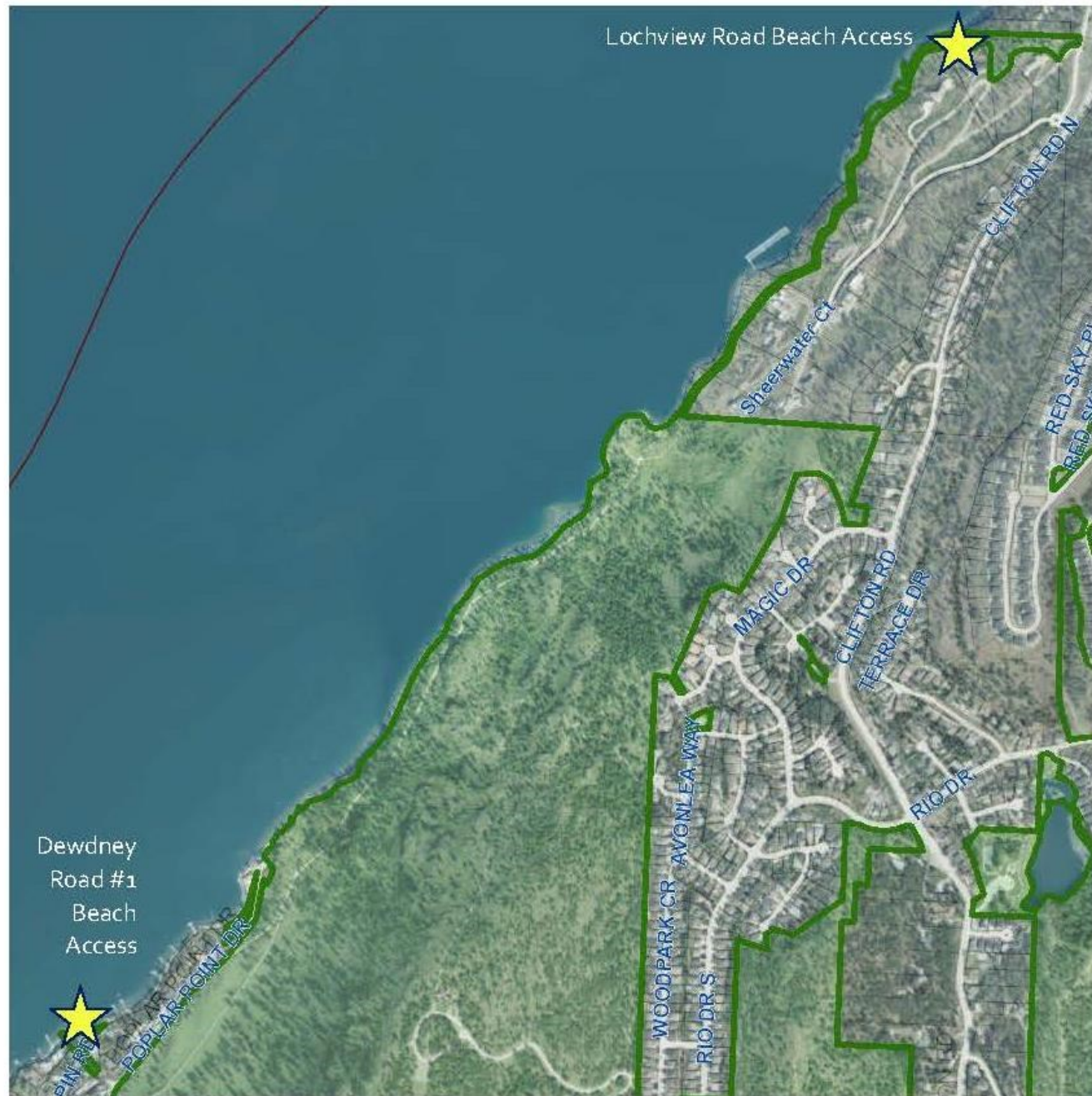
Beach Sites

McKinley Landing



Beach Sites

Clifton /
Poplar Point



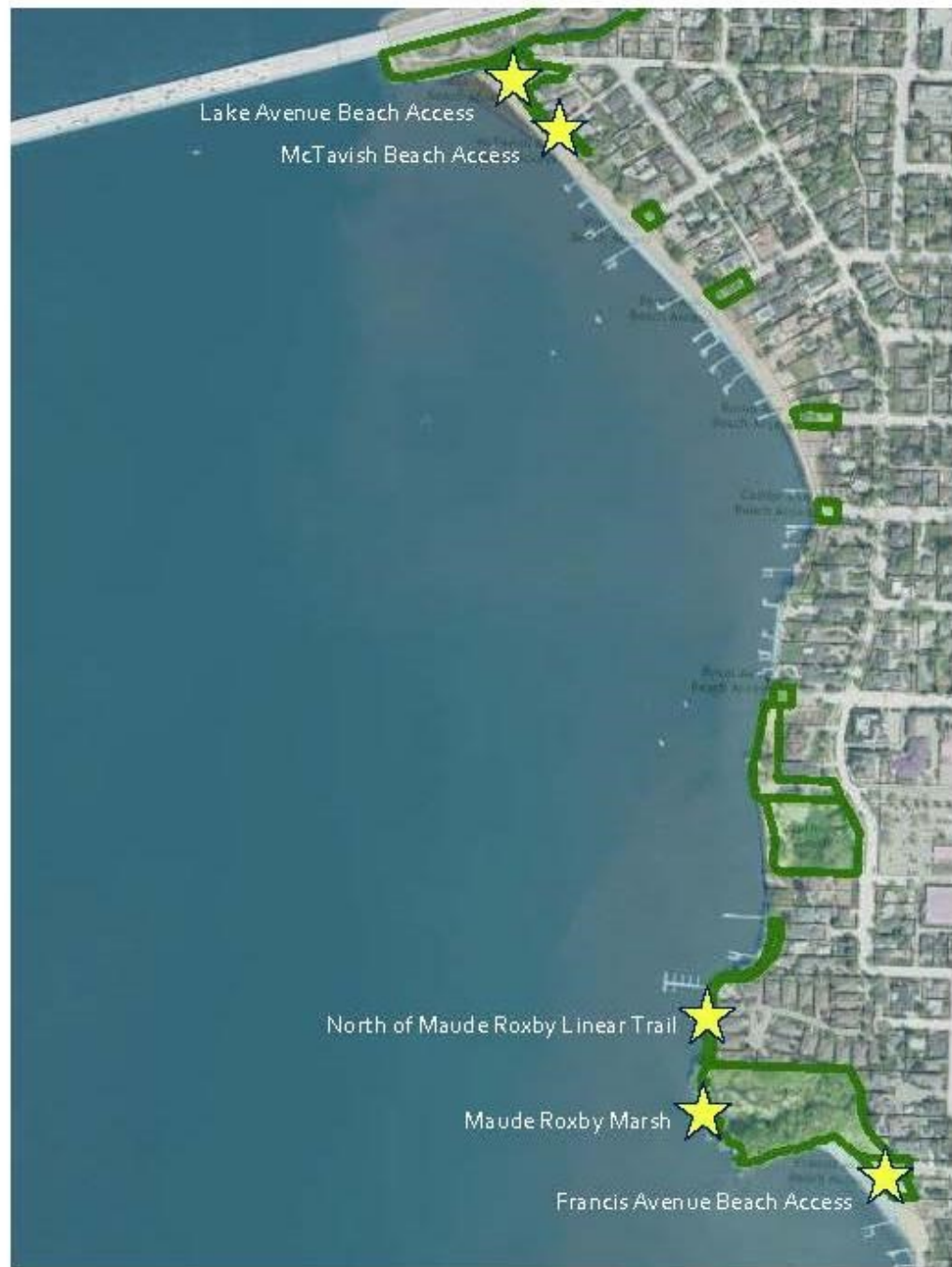
Beach Sites

Manhattan Point



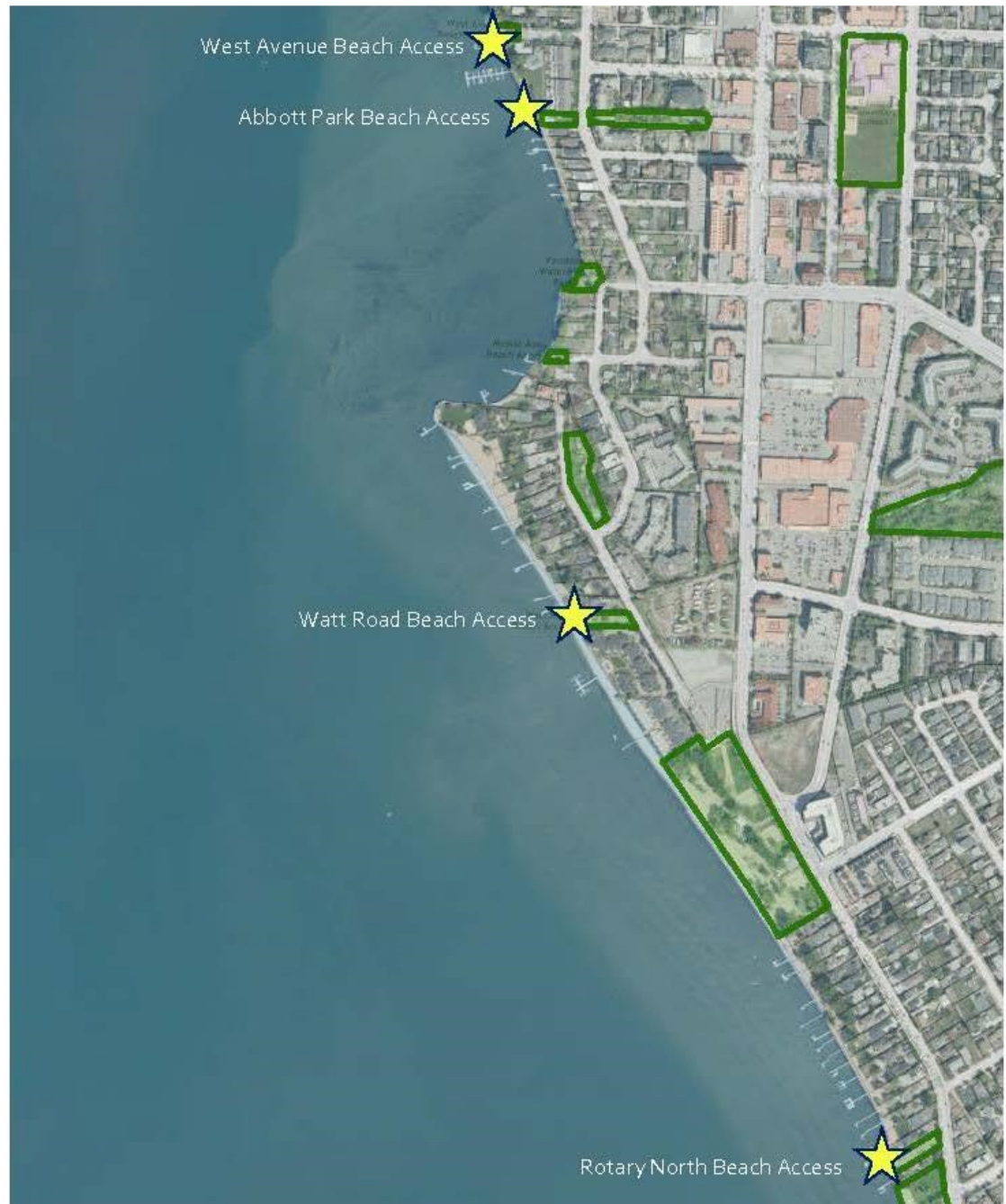
Beach Sites

Kelowna
South



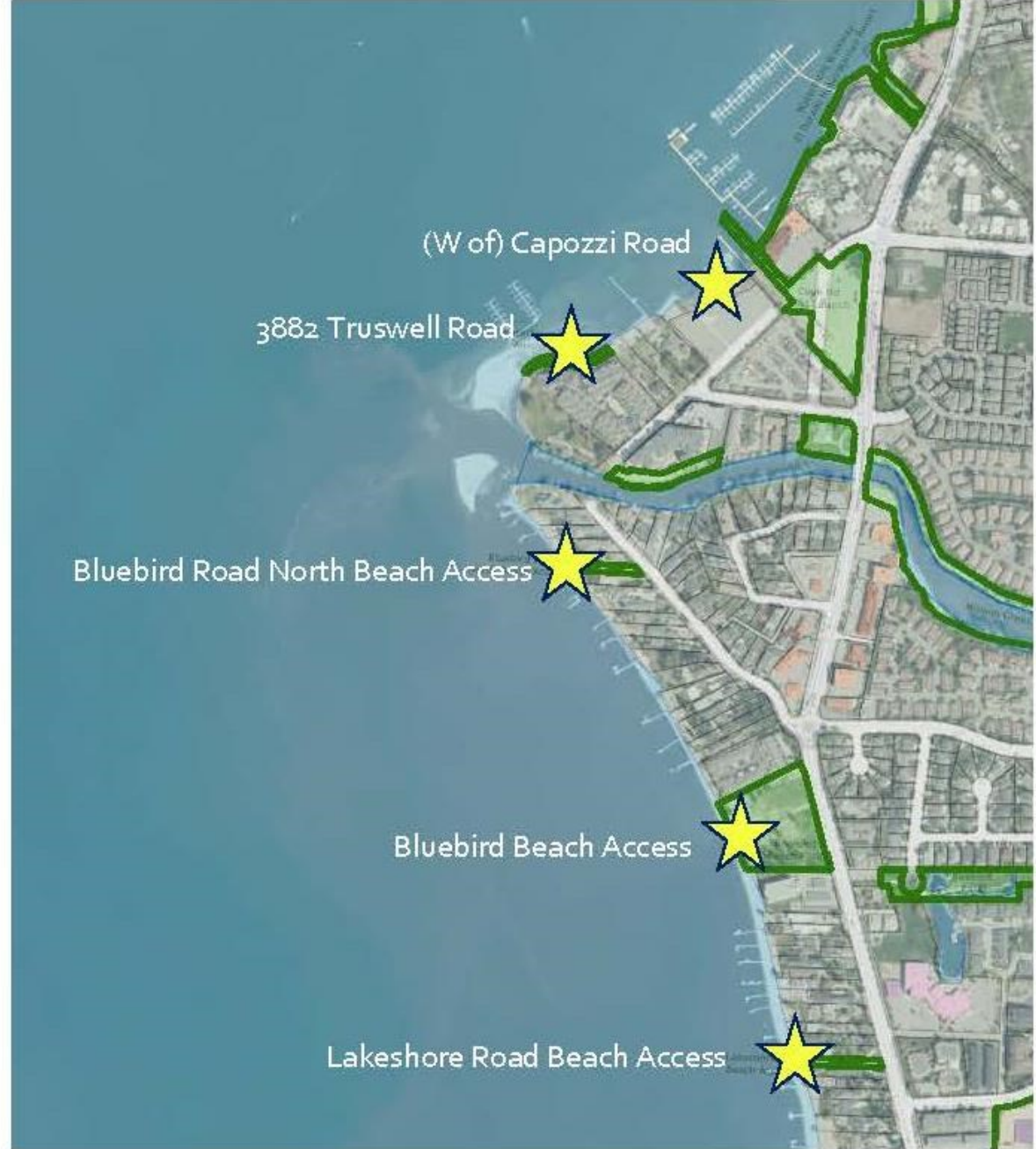
Beach Sites

Pandosy /
Lower Mission



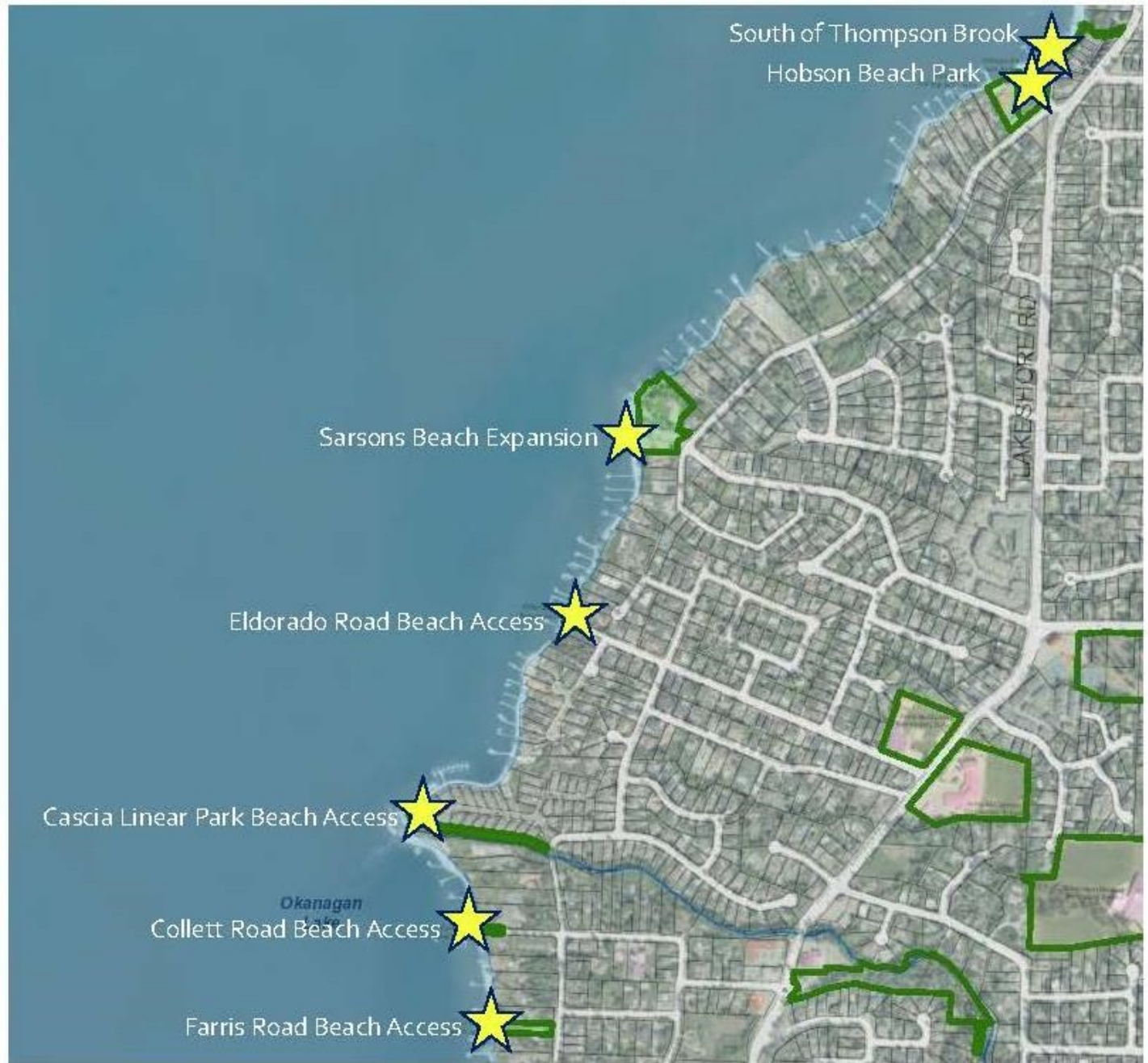
Beach Sites

Lower Mission



Beach Sites

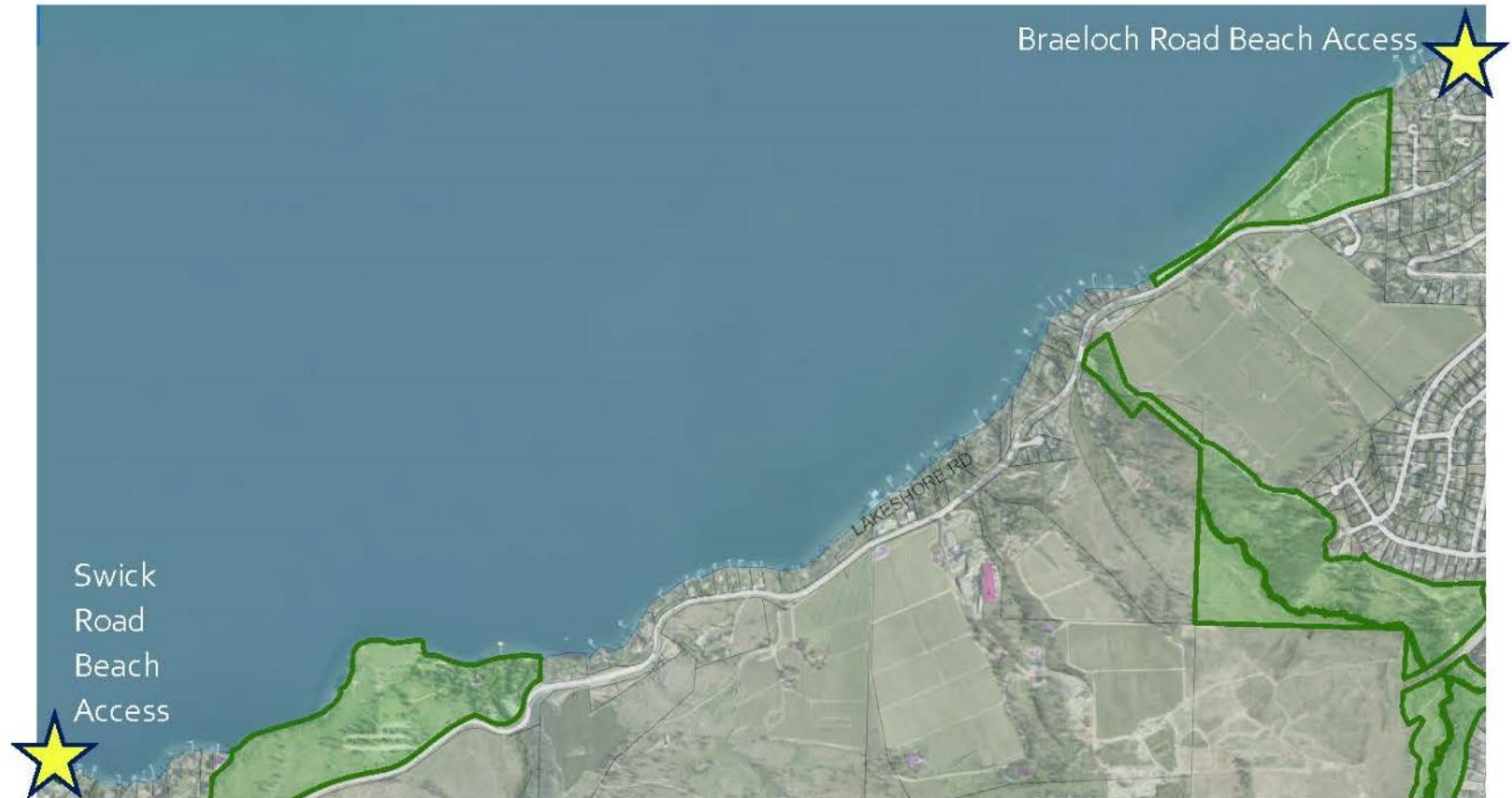
Lower Mission / Bellevue



Okanagan lake – City of Kelowna Crown Land Tenure Applications – Lower Mission / Bellevue

Beach Sites

South Mission



Okanagan lake – City of Kelowna Crown Land Tenure Applications – South Mission

Current Shoreline Protection



Projects

- North of Maude Roxby
- Maude Roxby Marsh
- South of Thompson Brook
- Hobson Beach Park

Staff Recommendation

- ▶ Receive the report for information
- ▶ Direct staff to apply for Community Institutional Crown Land Tenure for beach parks and waterfront access points



Questions?

For more information, visit kelowna.ca.