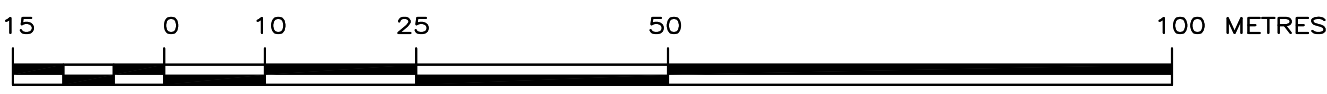


REFERENCE PLAN OF PART OF LOT 11 SECTION 34 TOWNSHIP 26
 ODYD PLAN 3236 EXCEPT PLANS 9277 AND H10297

PLAN EPP53296
 PRELIMINARY

PURSUANT TO SECTION 107 OF THE LAND TITLE ACT

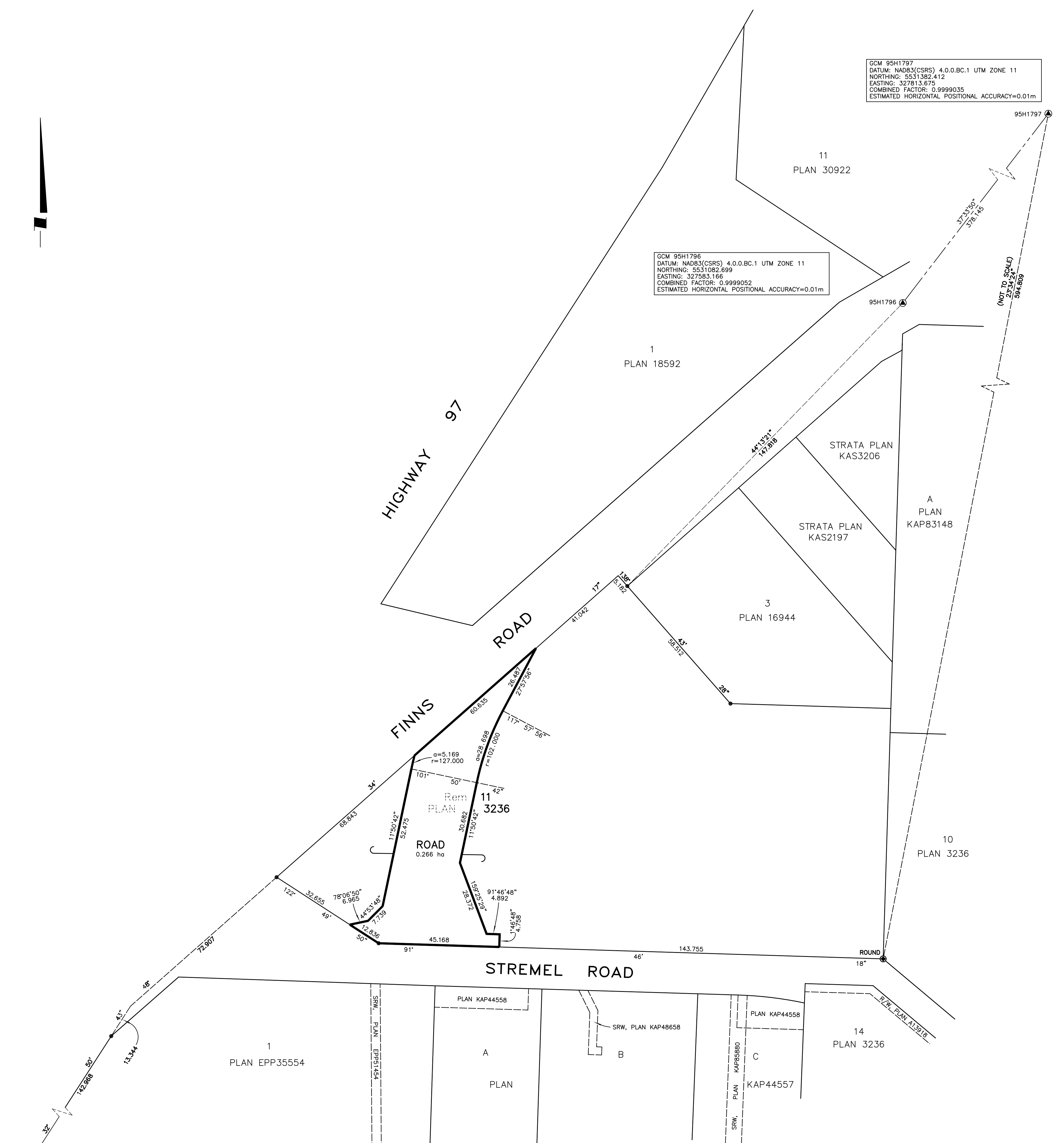
BCGS 82E.093



THE INTENDED PLOT SIZE OF THIS PLAN IS 560mm IN WIDTH BY 864mm IN HEIGHT (D SIZE) WHEN PLOTTED AT A SCALE OF 1:750

GCM 95H1797
 DATUM: NAD83(CSRS) 4.0.0.BC.1 UTM ZONE 11
 NORTHING: 5531382.412
 EASTING: 327813.675
 COMBINED FACTOR: 0.9999035
 ESTIMATED HORIZONTAL POSITIONAL ACCURACY=0.01m

GCM 95H1796
 DATUM: NAD83(CSRS) 4.0.0.BC.1 UTM ZONE 11
 NORTHING: 5531082.699
 EASTING: 327583.166
 COMBINED FACTOR: 0.9999052
 ESTIMATED HORIZONTAL POSITIONAL ACCURACY=0.01m



THIS PLAN LIES WITHIN THE JURISDICTION OF THE APPROVING OFFICER FOR THE CITY OF KELOWNA.

LEGEND

INTEGRATED SURVEY AREA NO. 4, CITY OF KELOWNA, NAD83 (CSRS)

GRID BEARINGS ARE DERIVED FROM OBSERVATIONS BETWEEN GEODETIC CONTROL MONUMENTS 95H1796 AND 95H1797.

THE UTM COORDINATES AND ESTIMATED HORIZONTAL POSITIONAL ACCURACY ARE DERIVED FROM THE MASCOOT PUBLISHED COORDINATES AND STANDARD DEVIATIONS FOR GEODETIC CONTROL MONUMENTS 95H1796 AND 95H1797.

THIS PLAN SHOWS HORIZONTAL GROUND-LEVEL DISTANCES UNLESS OTHERWISE SPECIFIED. TO COMPUTE GRID DISTANCES, MULTIPLY GROUND-LEVEL DISTANCES BY THE AVERAGE COMBINED FACTOR OF 0.99990435 WHICH HAS BEEN DERIVED FROM GEODETIC CONTROL MONUMENTS 95H1796 AND 95H1797.

- DENOTES CONTROL MONUMENT FOUND
- DENOTES STANDARD IRON POST FOUND
- DENOTES STANDARD IRON POST SET
- DENOTES NON-STANDARD IRON POST FOUND

THIS PLAN LIES WITHIN THE REGIONAL DISTRICT OF CENTRAL OKANAGAN.

THE FIELD SURVEY REPRESENTED BY THIS PLAN WAS COMPLETED ON THE DAY OF , 2015
 COLIN M. FERGUSON, BCLS 858

Ferguson Land Surveying & Geomatics Ltd.
 B.C. AND CANADA LAND SURVEYORS
 404-1830 PANDOSY STREET, KELOWNA, B.C.
 TELEPHONE (250) 763-3115 FAX (250) 763-0321

JOB No 20271-REF1

S:\Shared (Aug 10, 2006)\Job_Files\2022X\20271\20271-REF1.DWG
 DRFTD BY: CF FB/PG: SEE FILE