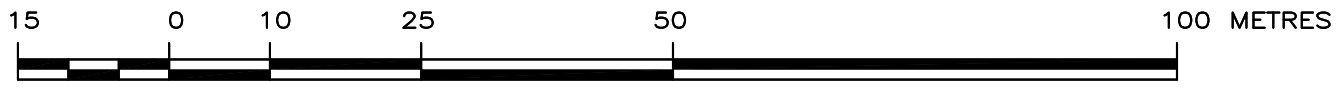


REFERENCE PLAN TO ACCOMPANY CITY OF KELOWNA ROAD CLOSURE  
AND REMOVAL OF HIGHWAY DEDICATION BYLAW No. \_\_\_\_\_ OF PART  
OF ROAD DEDICATED BY PLAN H10297, PLAN 10770 AND PLAN 3236  
SECTION 34 TOWNSHIP 26 ODYD

PLAN EPP53298  
PRELIMINARY

PURSUANT TO SECTION 120 OF THE LAND TITLE ACT AND SECTION 40 OF THE COMMUNITY CHARTER

BCGS 82E.093

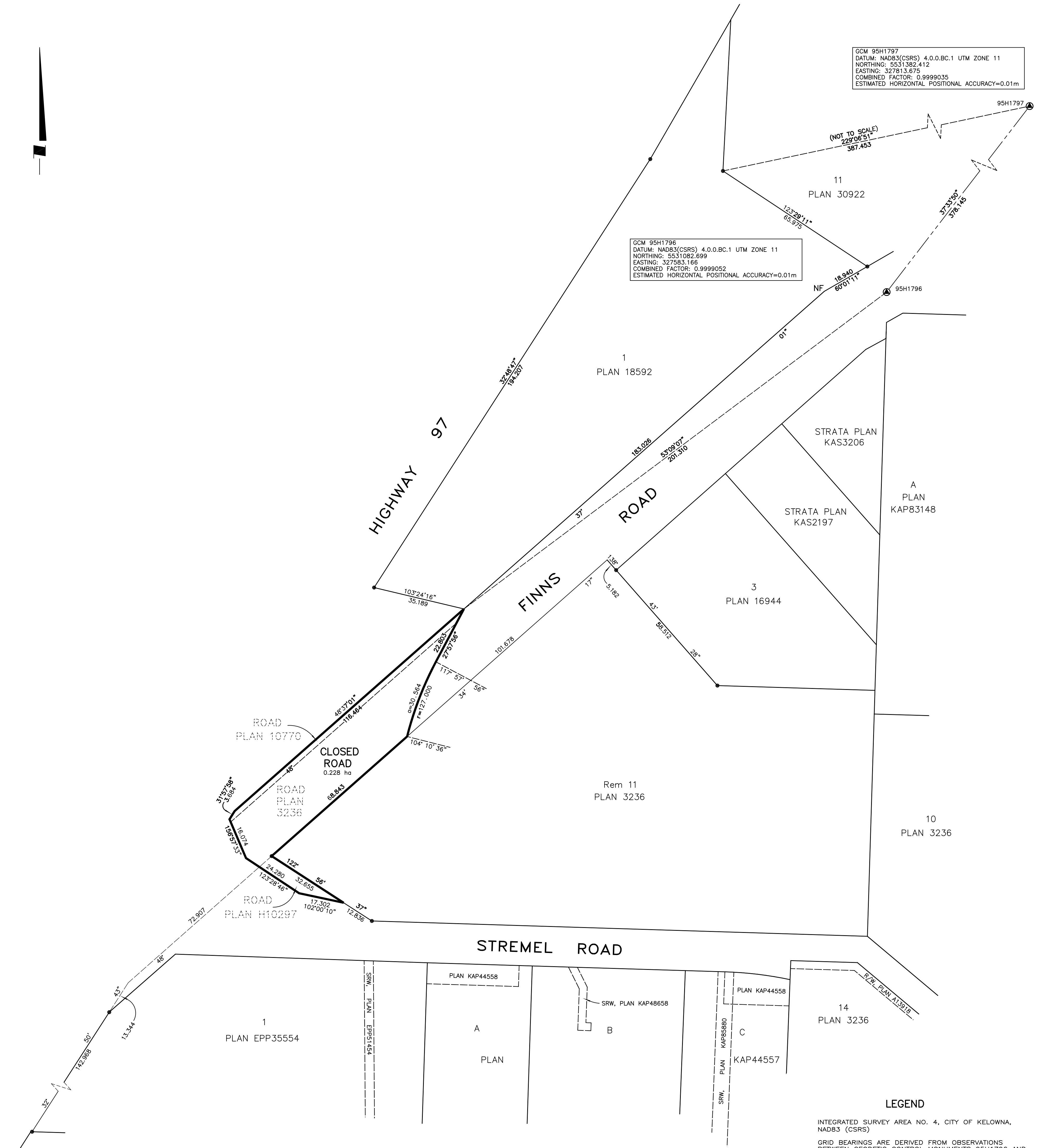


THE INTENDED PLOT SIZE OF THIS PLAN IS 560mm IN WIDTH BY 864mm IN HEIGHT (D SIZE) WHEN PLOTTED AT A SCALE OF 1:750



GCM 95H1797  
DATUM: NAD83(CSRS) 4.0.0.BC.1 UTM ZONE 11  
NORTHING: 5531382.412  
EASTING: 327813.675  
COMBINED FACTOR: 0.9999035  
ESTIMATED HORIZONTAL POSITIONAL ACCURACY=0.01m

GCM 95H1796  
DATUM: NAD83(CSRS) 4.0.0.BC.1 UTM ZONE 11  
NORTHING: 5531082.699  
EASTING: 327583.166  
COMBINED FACTOR: 0.9999052  
ESTIMATED HORIZONTAL POSITIONAL ACCURACY=0.01m



LEGEND

INTEGRATED SURVEY AREA NO. 4, CITY OF KELOWNA, NAD83 (CSRS)  
GRID BEARINGS ARE DERIVED FROM OBSERVATIONS BETWEEN GEODETIC CONTROL MONUMENTS 95H1796 AND 95H1797.  
THE UTM COORDINATES AND ESTIMATED HORIZONTAL POSITIONAL ACCURACY ARE DERIVED FROM THE MASCOOT PUBLISHED COORDINATES AND STANDARD DEVIATIONS FOR GEODETIC CONTROL MONUMENTS 95H1796 AND 95H1797.  
THIS PLAN SHOWS HORIZONTAL GROUND-LEVEL DISTANCES UNLESS OTHERWISE SPECIFIED, TO COMPUTE GRID DISTANCES, MULTIPLY GROUND-LEVEL DISTANCES BY THE AVERAGE COMBINED FACTOR OF 0.99990435 WHICH HAS BEEN DERIVED FROM GEODETIC CONTROL MONUMENTS 95H1796 AND 95H1797.

- DENOTES CONTROL MONUMENT FOUND
- DENOTES STANDARD IRON POST FOUND
- DENOTES STANDARD IRON POST SET

THIS PLAN LIES WITHIN THE REGIONAL DISTRICT OF CENTRAL OKANAGAN.  
THE FIELD SURVEY REPRESENTED BY THIS PLAN WAS COMPLETED ON THE DAY OF , 2015  
COLIN M. FERGUSON, BCLS 858

**Ferguson Land Surveying & Geomatics Ltd.**  
B.C. AND CANADA LAND SURVEYORS  
404-1830 PANDOSY STREET, KELOWNA, B.C.  
TELEPHONE (250) 763-3115 FAX (250) 763-0321