



**YLW**

Kelowna International Airport

# Airport Advisory Committee Meeting

October 28, 2021

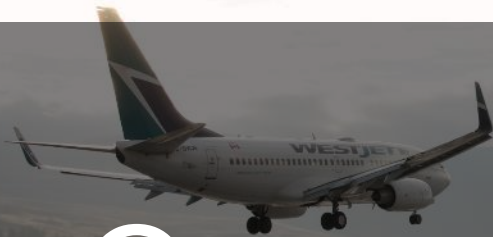
# Agenda

- ▶ Call to Order, Welcome and Introductions
- ▶ Approval of Minutes
- ▶ Operational Update
- ▶ Development Update
- ▶ Financial Update
- ▶ Recommendations
- ▶ Questions



**YLW**

Kelowna International Airport

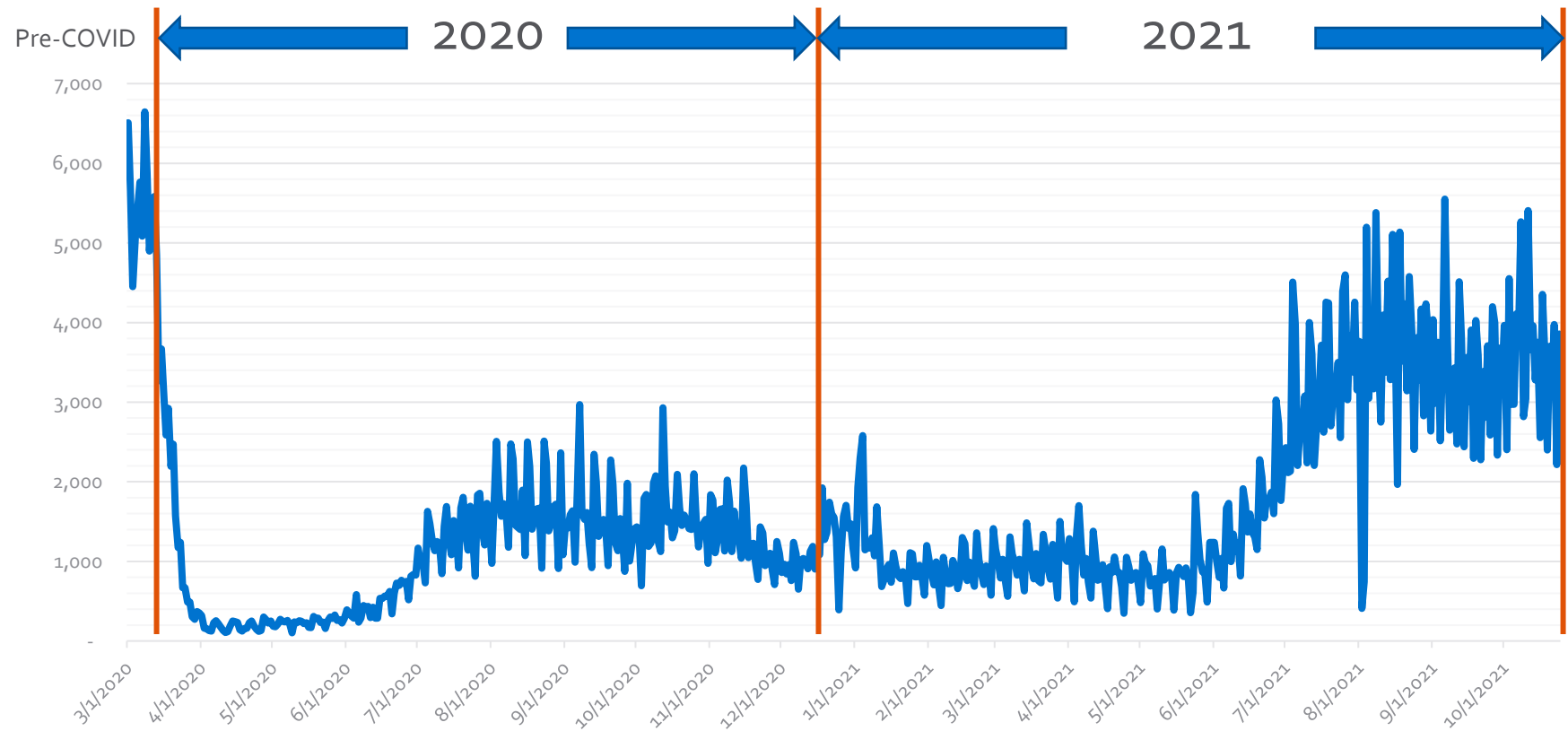


# Operational Update

## 2021 Monthly Passengers

	<b>Monthly</b>	<b>% Monthly</b>	<b>YTD</b>	<b>% YTD</b>
<b>January</b>	31,417	-82%	31,417	-82%
<b>February</b>	26,892	-84%	58,309	-83%
<b>March</b>	30,339	-71%	88,648	-80%
<b>April</b>	26,146	358%	114,794	-75%
<b>May</b>	24,633	264%	139,427	-70%
<b>June</b>	48,035	213%	187,462	-61%
<b>July</b>	97,335	134%	284,797	-46%
<b>August</b>	101,653	101%	386,450	-32%
<b>September</b>	98,685	124%	485,135	-21%
<b>Total (est)</b>			840,626	12%

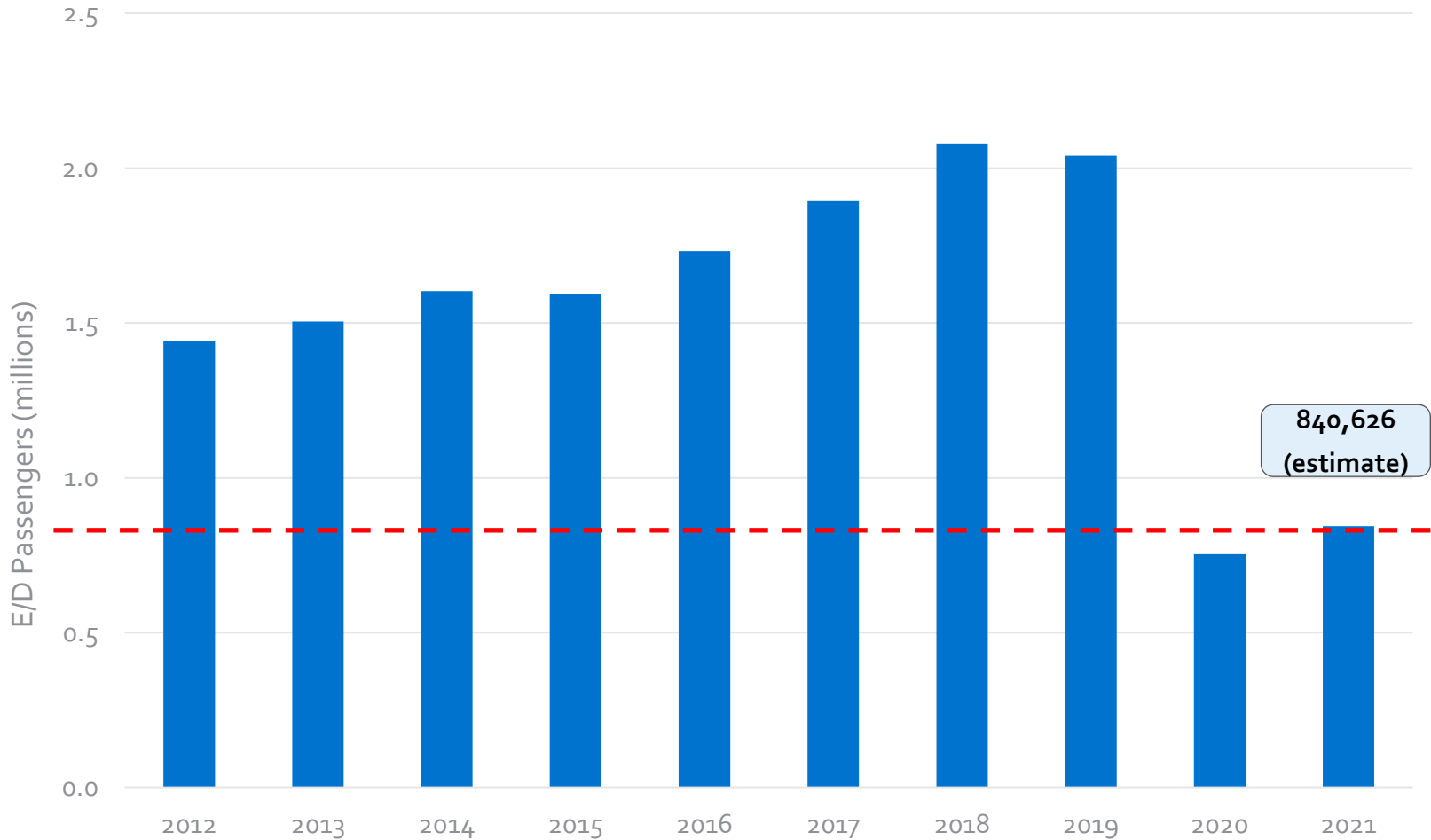
# Passenger Statistics – Tracked Daily



## Annual Comparison to pre-COVID

	Annual	% Change
2019 Total	2,032,019	
2020 Total	737,447	-64%
2021 (forecast)	840,626	-59%

# 2012 to 2021 Passenger Statistics



# Ongoing Staffing Reductions

## Continuing to operate with reduced staffing levels

- 9 positions remain unfilled (20% of total team)
- 5 staff positions currently working on 80% work share
  - Will be returning to 100% on November 1, 2021
- Remaining staff have taken on increased portfolios

## Staffing levels based on available “meaningful work”

- Groundside contracted maintenance temporarily moved in house
- Airside contracted security patrols temporarily moved in house

## Continuing to meet regulatory requirements

- Safety management system
- Aircraft rescue & fire fighting
- Wildlife control
- Runway inspections and surface condition reporting
- Operations centre



# Ongoing Operational Reductions

## Groundside Operations

- Valet parking service remains closed
- Several parking lots remain closed

## Agency status

- Security screening continuing to operate at reduced hours and capacity
- International arrivals remain restricted to 10 airports in Canada
- CBSA (customs) remains closed to arriving commercial flights
- Ambassador, Junior Ambassador and Ambassadorog programs remain suspended

# Terminal Building Operations

## Food and Beverage Services

- |                                  |                      |
|----------------------------------|----------------------|
| • Groundside Whitespot           | Remains closed       |
| • Groundside Tim Hortons         | Take out only        |
| • Airside Subway and Tim Hortons | Open (limited hours) |
| • Airside Whitespot              | Open for dine in     |

## Health Protocols

- Masks mandatory in all areas of the building and on aircraft
- Enhanced cleaning protocols for all public areas
- WCB and Health Canada protocols for all office and private leased space

## Temporary Reduction of Prime Contractor Services

- Reduced terminal building operating hours
- Reduced number of contractor staff hours on site
- Reduced service level in non-critical operating areas (baggage jams, general maintenance, response time)

# Antigen and PCR Testing Program



---

WORKCAMP  
CHARTERS

---

TRAVELLING  
PUBLIC

---



---

CAMPUS  
EMPLOYEES

# Antigen and PCR Testing Program

## Work Camp Charters

- Mandatory testing for charter passengers – LNG Canada
- Allows for increased capacity at work camps
- Protects the community

## Travelling Public

- Onsite Antigen and PCR accredited testing facility for pre-departure testing
- Onsite PCR lab allows for a 4-hour turnaround (rapid test 20 minutes)
- Community partnership with Whitecap Medical

## Campus Employee Program

- Voluntary YLW campus wide testing program
- Free of charge to YLW employees
- Partnership with Health Canada and Whitecap Medical

# ACI-NA Health Accreditation Obtained



- ▶ International program
- ▶ Cleaning protocols
- ▶ Employee distancing and shift changes
- ▶ Passenger queuing while collecting baggage and boarding aircraft
- ▶ Availability and location of hand sanitizer
- ▶ Public communication of the program
- ▶ Daily employee health checks
- ▶ Protocols for employees who are showing symptoms

# Vaccine Mandate - Passengers

- October 30<sup>th</sup> – fully vaccinated or PCR test required 72-hours prior for domestic travel
- November 30<sup>th</sup> – fully vaccinated for domestic travel (PCR test no longer valid option)
- Very narrow exemptions allowed
  - Medical / Religious
  - Emergency Travel
  - Travel from remote communities



# Vaccine Mandate - Employees

- All staff entering the restricted side of the airport are required to be fully vaccinated. Currently 850 restricted area pass holders on campus.
- Very narrow exemptions allowed:
  - Medical / Religious
  - Outside agencies responding to emergencies
  - In the process of being fully vaccinated (received 1 shot)
- October 30<sup>th</sup> – policy declaration required by the Airport Operator
- November 15<sup>th</sup> – staff must be fully vaccinated or in receipt of an exemption
- January 24<sup>th</sup> – program to be fully implemented



# Expansion of Testing Facility

- Whitecap Medical to double the size of existing pre-departure testing facility in 2022 to meet demand
- Inbound testing facility planned to satisfy Health Canada inbound international testing requirements





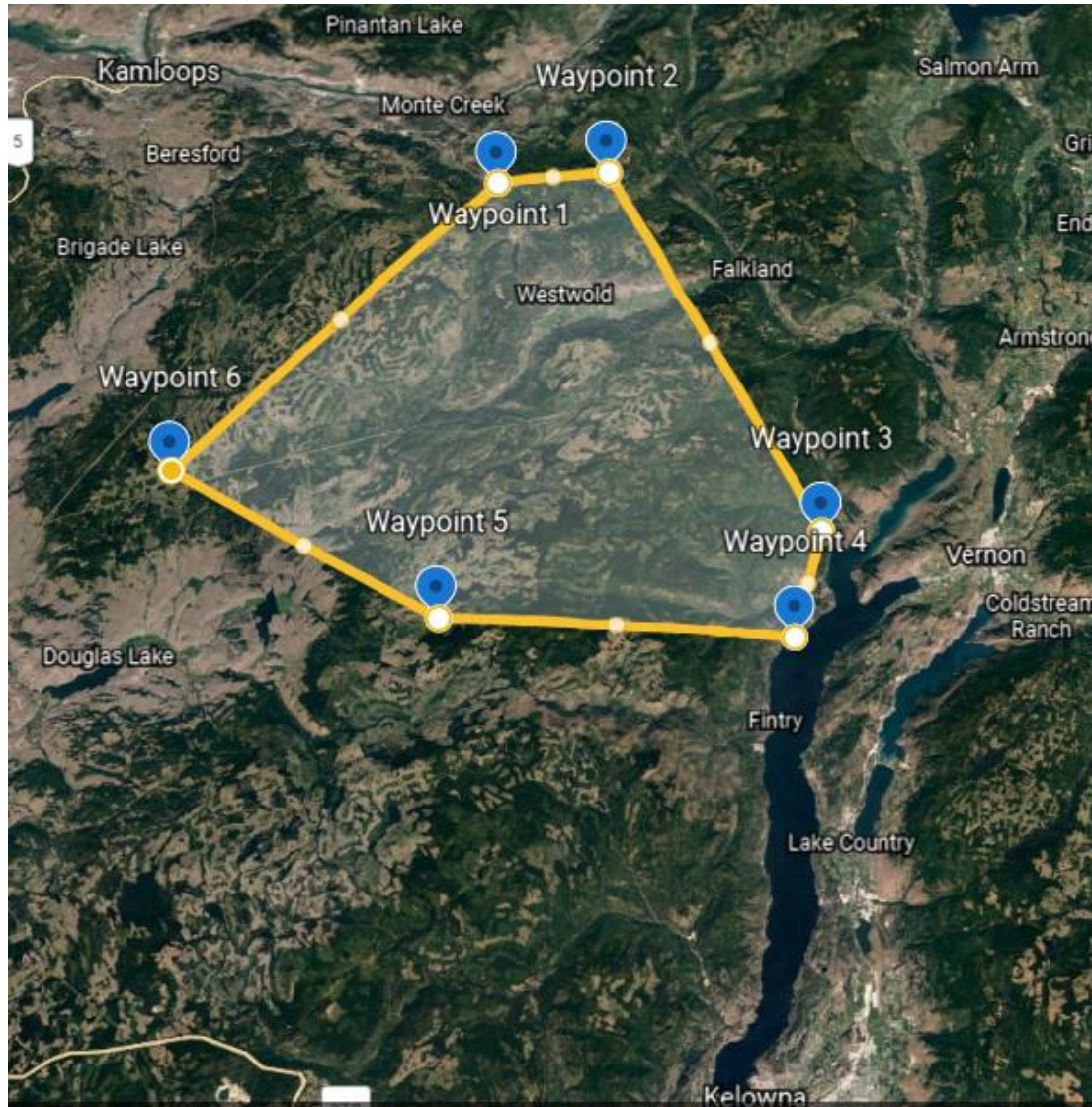
# Staffing Requirements

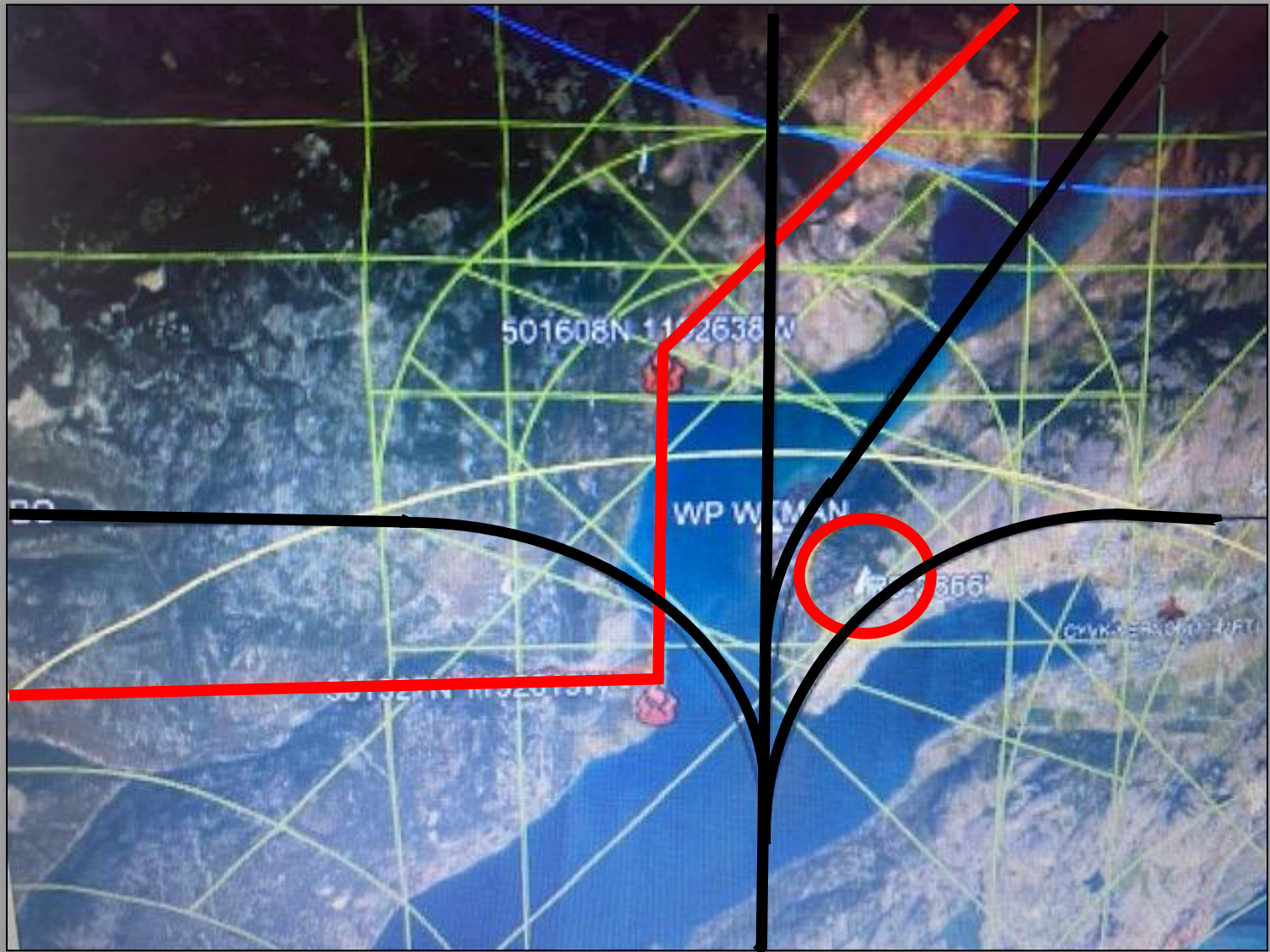
- Ensure operating hours match airline current and future schedule demands
- Adjust prime contractor staffing levels to match operational requirements
- Continue to assess internal staffing requirements based on operational needs and meaningful work
- Vacant positions to be filled strategically with a focus on generating and diversifying revenues and increasing cost efficiencies
- Reinstate Ambassador volunteer program once stage 4 of the provincial restart plan is in place

# BC Wildfires

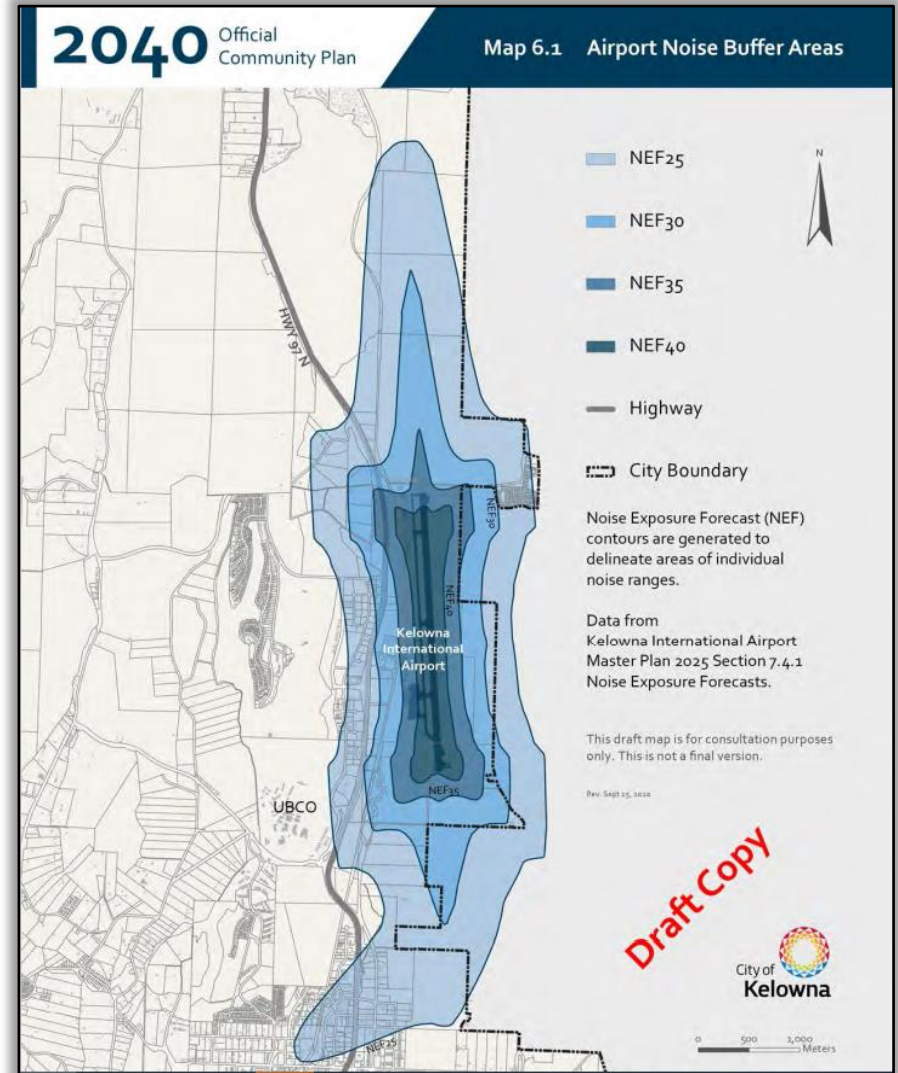
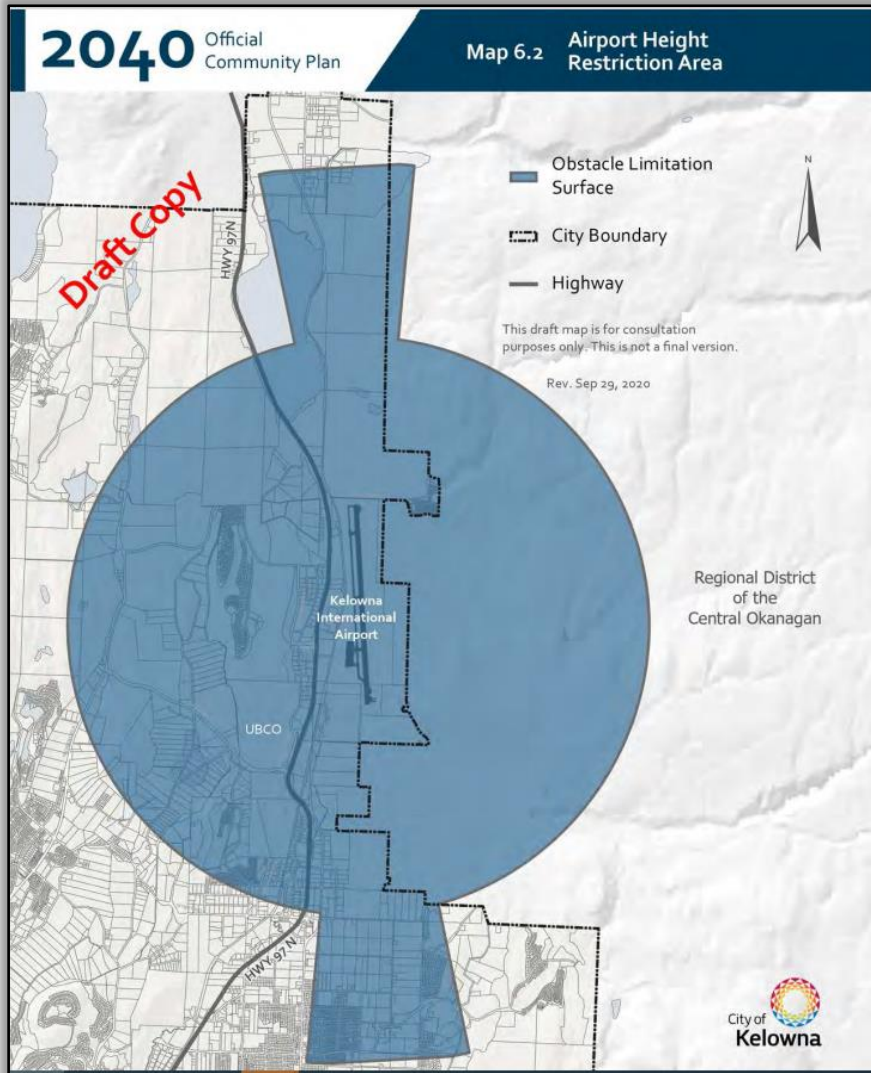


# BC Wildfires





# Official Community Plan Engagement





**YLW**

Kelowna International Airport

# Development Update



# Project Development Update

## Soaring Beyond 2.5 Million Passengers

- ▶ Design development of ATB expansion
  - ▶ VE exercise is complete
  - ▶ Current cost will be derived from the 90% design
  - ▶ Design has completed Issued for Tender set
  - ▶ Construction timeline TBD

An architectural rendering of the Kelowna International Airport terminal expansion. The building features a modern design with a dark, cantilevered roof and large glass windows. The text "Control 'Click' To Launch Terminal Expansion Animation" is overlaid in white, underlined font across the center of the image. The background shows a clear sky and a paved area with some blurred figures of people and vehicles, suggesting a busy airport environment.

# Control "Click" To Launch Terminal Expansion Animation



# Taxiway D Rehabilitation

- Scope: Structural rehabilitation of Taxiway D from between Taxiways A and C
- Schedule: June – August – completed
- Great project with no incidents throughout



# Taxiway E Rehabilitation

Scope: Mill and Pave southern half of Taxiway E

Schedule: 2 days, September 1 & 2 – completed



# Accessibility Upgrades

Scope:

- Departures Room Service Animal Relief Area
- South Curbside Parking - Expanded
- Mezzanine Stair Transition  
added contrasting stair nosing



# Parking Lot Equipment Replacement

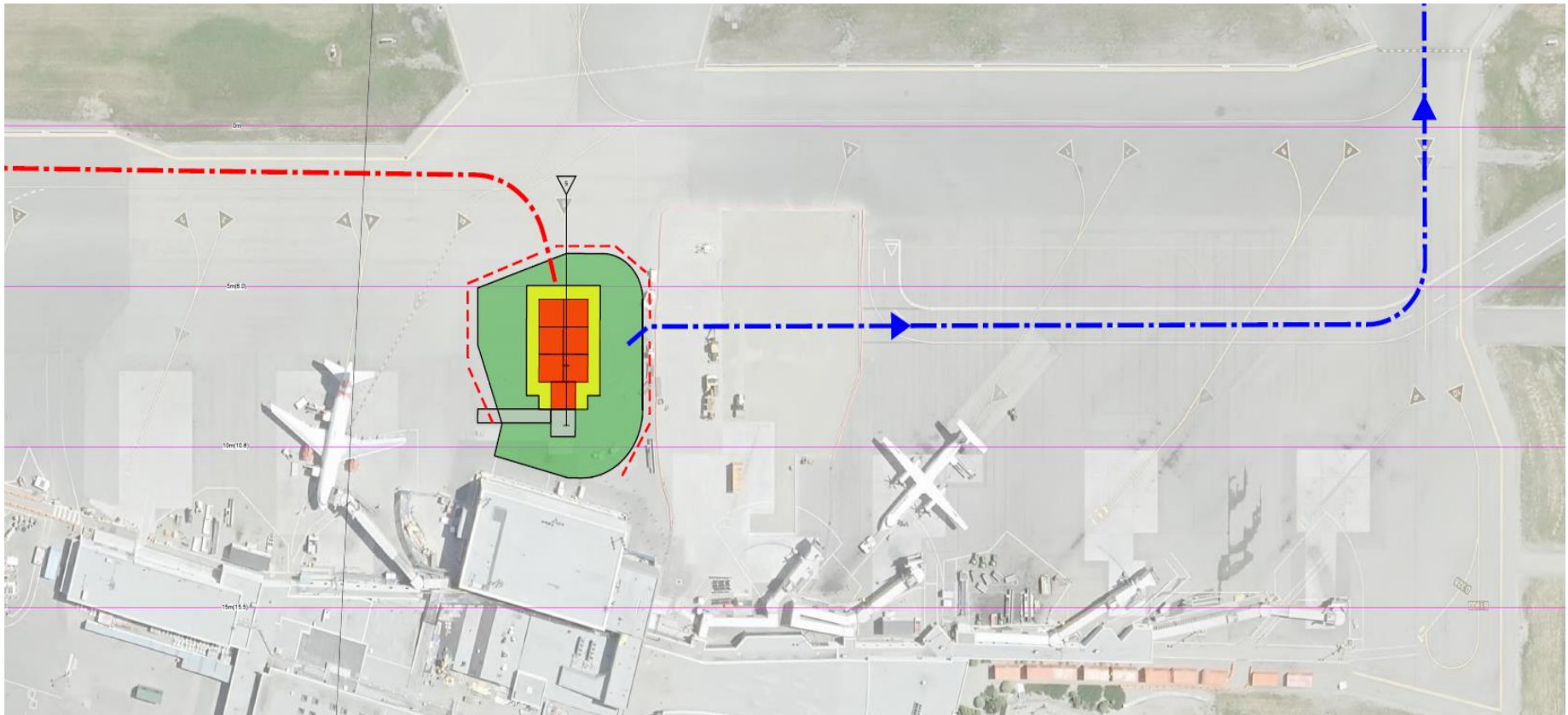
Scope: End of life replacement and technology upgrades of:

- parking kiosks
- point of sale equipment
- control equipment



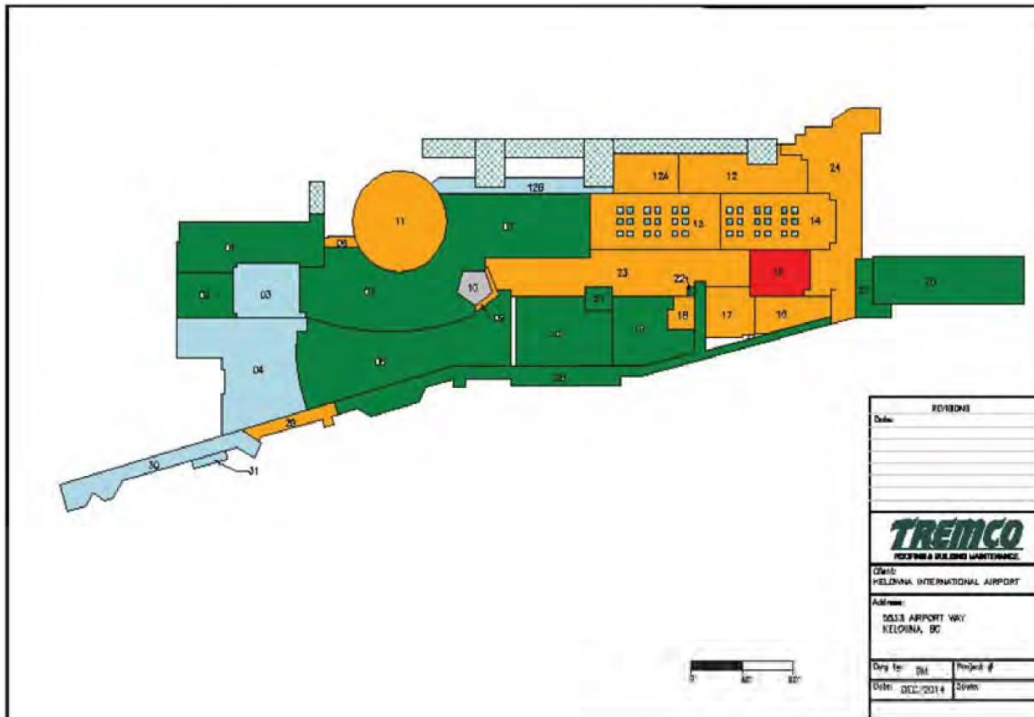
# Operation Stand 5 Concrete Panels

- Purpose: to add concrete panels to OS5 due to deterioration of pavement caused by heavier aircraft and hot pavement
- Requested budget for design and construction in 2022



# ATB Roof Replacement

- Purpose: to replace sections of the ATB roof as most sections have reached the end of useful life.
- To commence in late spring/summer of 2022
- Will engage with stakeholders on operational challenges



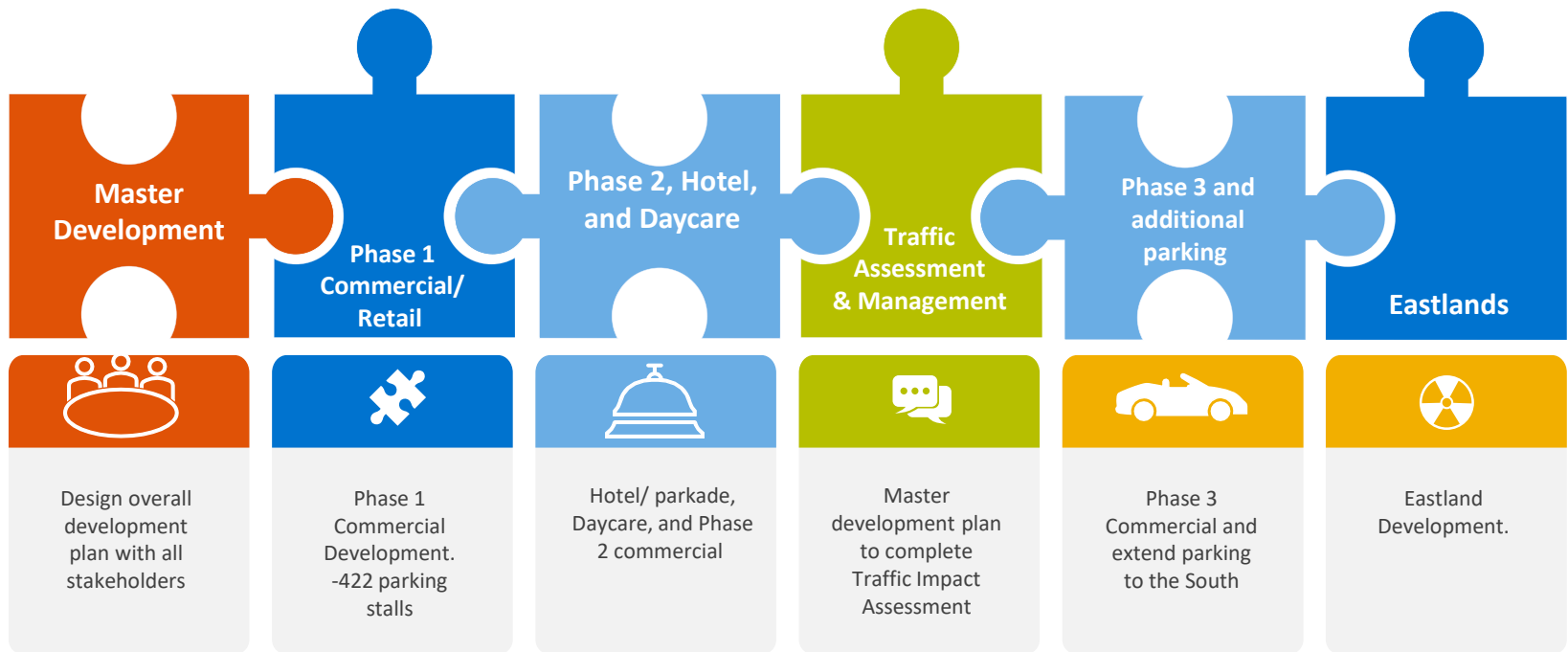
# Apron 3 Design



- Purpose: to rehabilitate Apron 3 due to pavement deterioration
- Design to commence in late in 2022 with construction in 2023
- Will engage with stakeholders on operational challenges once planning commences

# YLW Commercial Development plan

INTERCONNECTED - Puzzle Pieces



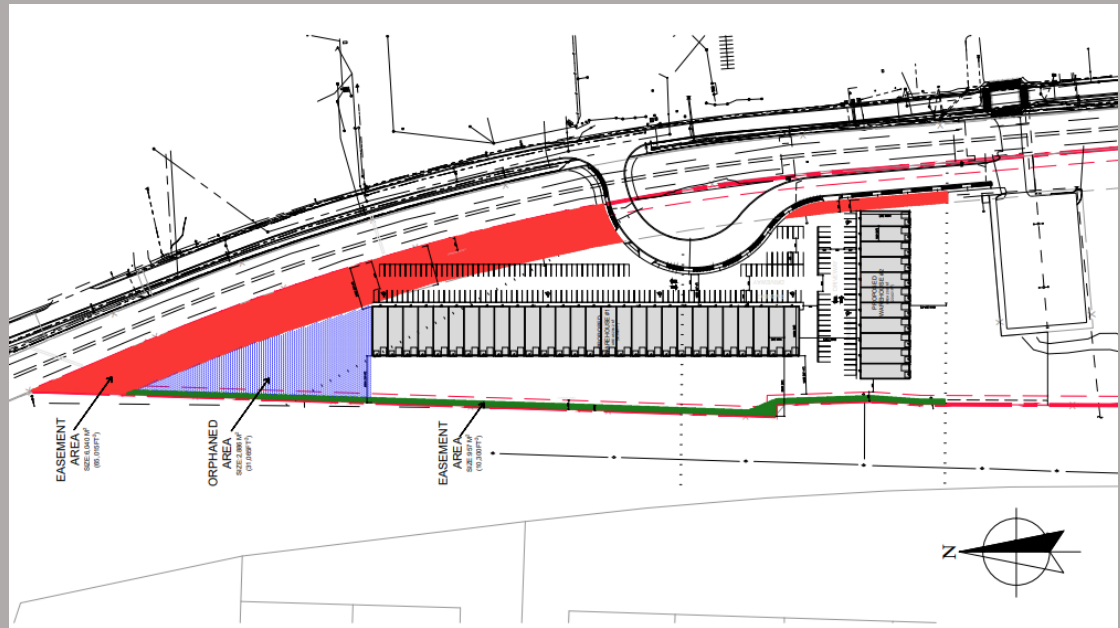


# Fully Serviced Commercial Investments

## Opportunity

Development of destination retail and commercial space within CD12 zoning. Pre paid lease is an option for this and other commercial lots on the Airport campus.

- Letter of Intent received
- Amalgamation of two lots to one total 6.01 acres to suit build and operations
- Internal reviews and approval progressing



# Commercial Retail Phase 1

## 3 phase 9-acre commercial development

✓ LOI signed

### Opportunity

Commercial land development to be developed and occupied over a rolling 5-year period, for stability in construction and cost efficiencies.

Requirement to relocate some current facilities and update the landside master plan relating to these opportunities.

Negotiations and execution of phase 1 lease with internal reviews and approvals.

Traffic Impact Assessment required to include phase 1, 2, & 3 commercial and the hotel development.



# Airport Childcare Facility

## Overview

There is a requirement for daycare facilities on the Airport campus to aid staff with work shifts and increase the ability for staff to start in or return to the workplace.

Federal funding is available for daycare facilities - \$1.5 million for the operator and an additional \$1.5 million utilizing public land.

Partnership group will build, manage, and operate the facility which will help the growth and return of employment at YLW.

## Benefits

Pros – workplace destination childcare

- community benefit
- delivers on OCP objectives
- Increases work opportunities

Cons - traffic increase



# HOTEL AND PARKADE

## Opportunity

2-acre hotel site with approximately 180 rooms and approximately 1000 stall parkade. Hotel will offer destination amenities, event space, and meeting space. Listed with a commercial realtor we garner the appropriate level of marketing and response.

- Depending on layout, roundabout or traffic management system should be completed prior to or in parallel with the hotel build.
- May require text amendment to CD12 to allow for height variance.





**YLW**

Kelowna International Airport



# Air Service Development Update

Fall and Winter 2021 Program – October 2021



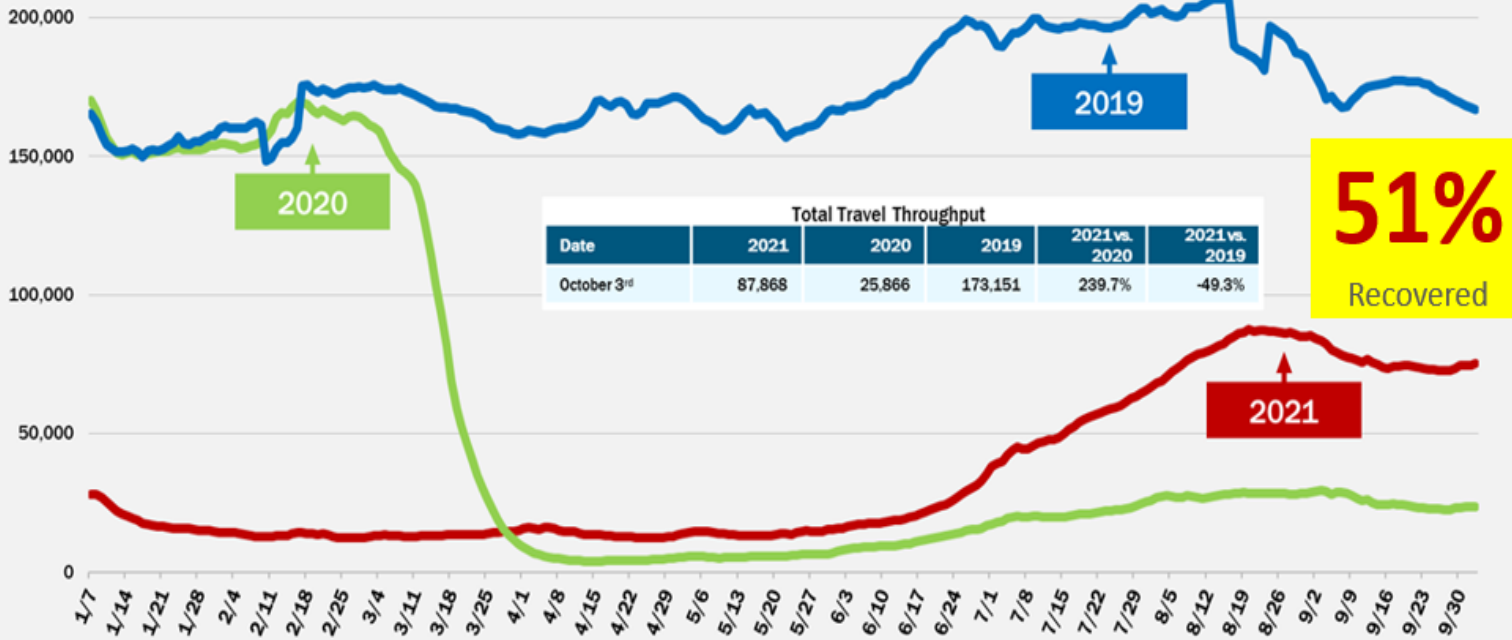
# Air Service Development Update

InterVISTAS  
a company of Royal LePage

## CATSA Throughput



7-Day Moving Average



~71% Traffic Recovered  
(as Of October 6th 2021)

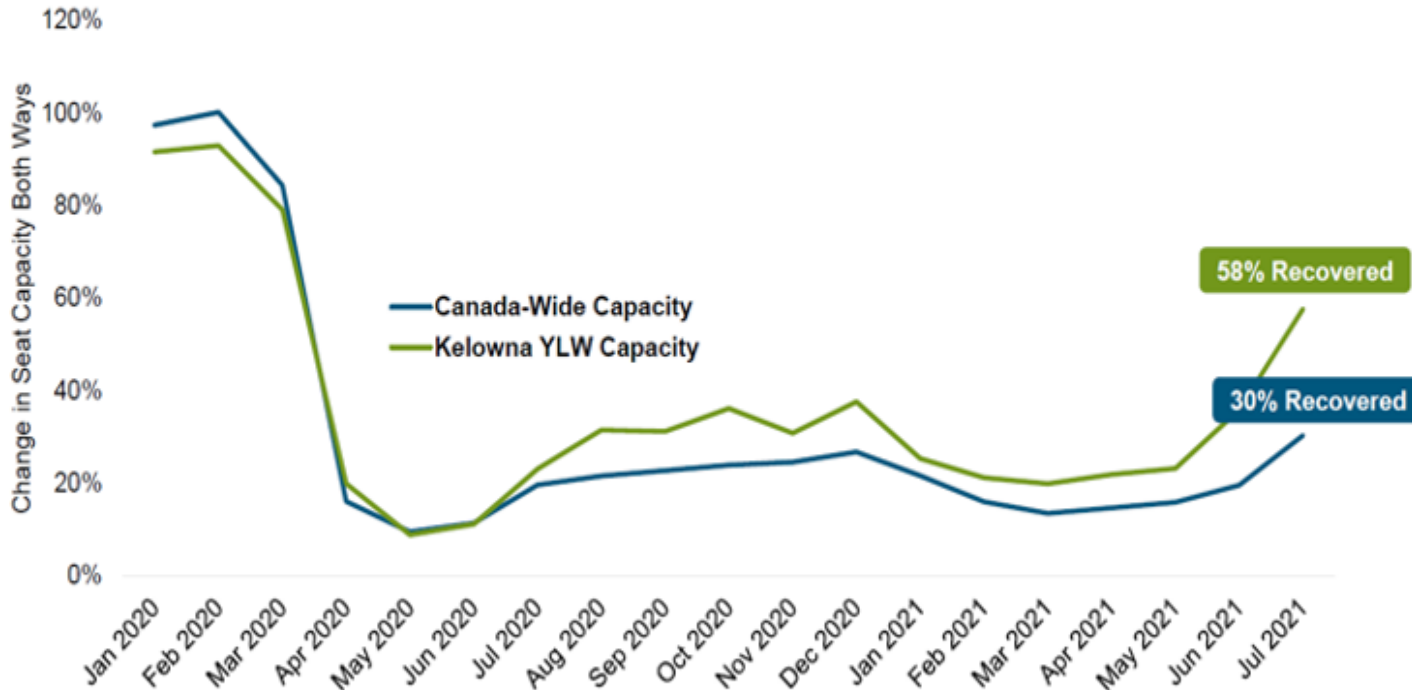
Note: CATSA data includes 15 largest airports.  
Source: CATSA

**YLW** Kelowna International Airport

# Air Service Development Update

## In 2021, YLW Has Recovered Faster Than Canadian Average

**Seat Capacity Recovery at YLW vs. Canadian Average**  
Capacity Levels Compared to Same Month in 2019

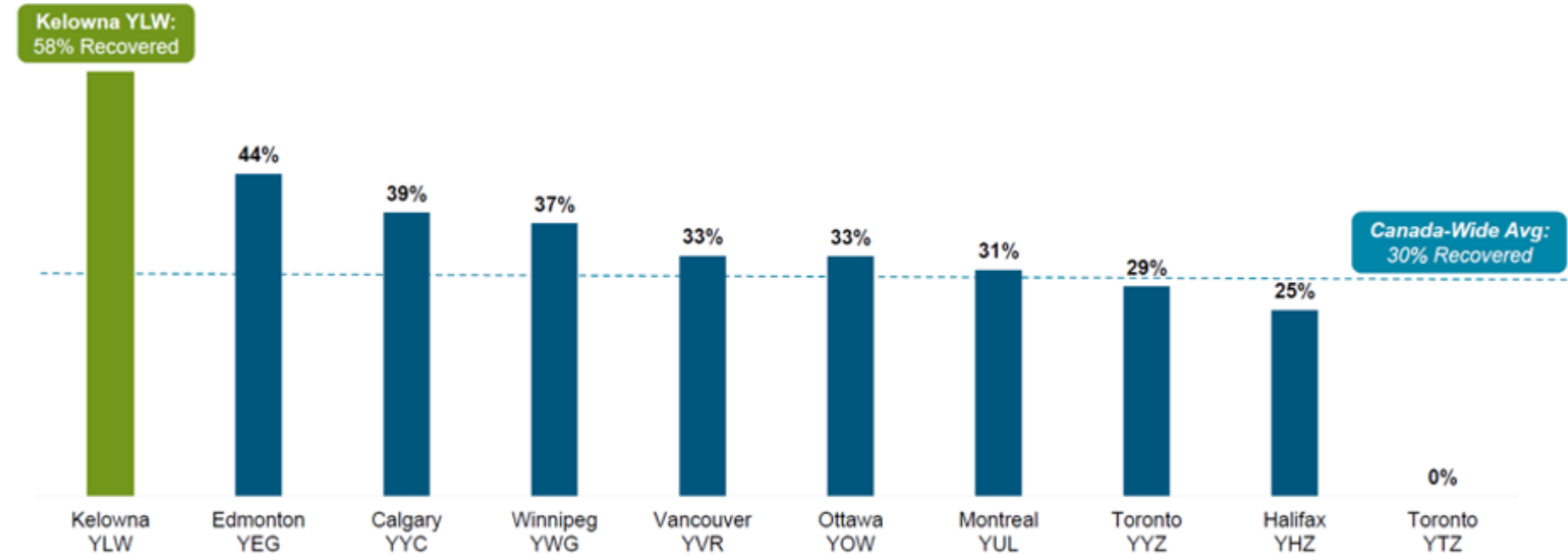


- Similar to U.S. leisure-focused markets such as Bozeman and Anchorage, Kelowna has experienced a much faster recovery than other airports.
- As of July 2021, YLW capacity will have recovered nearly 2x the amount that Canada-wide capacity has at 58% of 2019 levels vs. just 30% for Canada as a whole.

# Air Service Development Update

## In Fact, Kelowna is the Fastest Recovering Canadian Airport\*

Seat Capacity Recovery by Canadian Airport  
July 2021 Seat Capacity vs. July 2019 levels



\*Includes the top 10 Canadian airports by enplaned/deplaned passengers in 2019.

Source: Innovata Schedules via Diio by Cirium, Sabre Global Demand Database (GDD), airport websites.



# Air Service Development Update

## YLW Monthly Seat Benchmark

Select Timeframe: Monthly | Select Year: 2021 | Select Quarter: (All) | Select Month: June

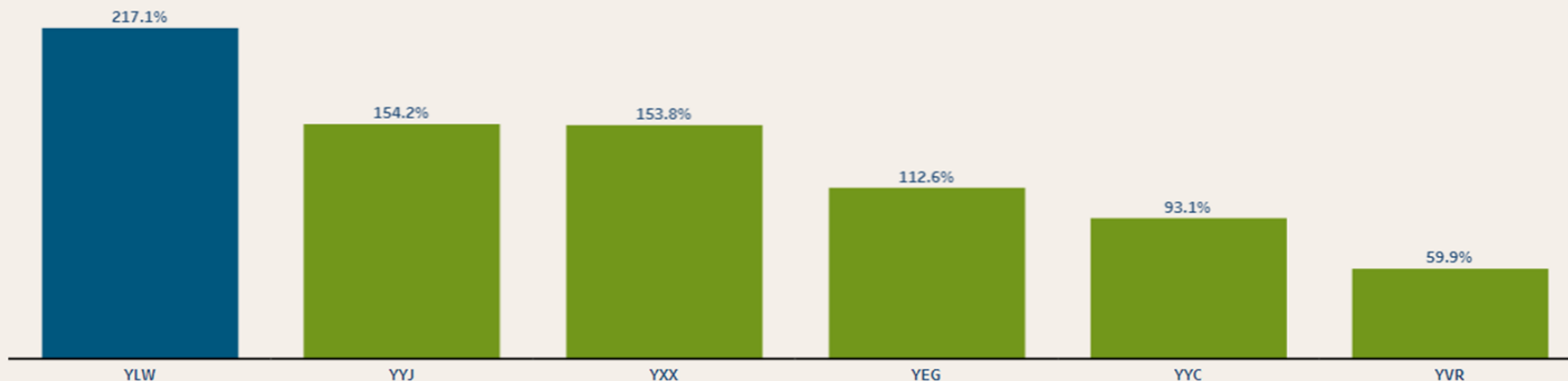
### Kelowna International Airport, by destination served

Select a destination airport to filter Seat Benchmark

	Grand Total	YYC	YVR	YEG	YYZ	YYJ	YHM	YWG	YUL	YXC	YXS	YQR	YXE
June 2020	25,008	11,890	12,054	0	0	570	0	0	0	494	0	0	0
June 2021	79,303 217.1%	28,756 141.9%	20,827 72.8%	13,570	10,686	1,908 234.7%	1,134	756	548	0 -100.0%	494	312	312

### Monthly Seat Benchmark, by selected airports

YoY Growth in Seats, Monthly (%)



Source: Innovata Schedules via Dilo. Schedules as of October 4, 2021



# Air Service Development Update

## YLW Monthly Seat Benchmark

Select Timeframe: 
 Select Year: 
 Select Quarter: 
 Select Month:

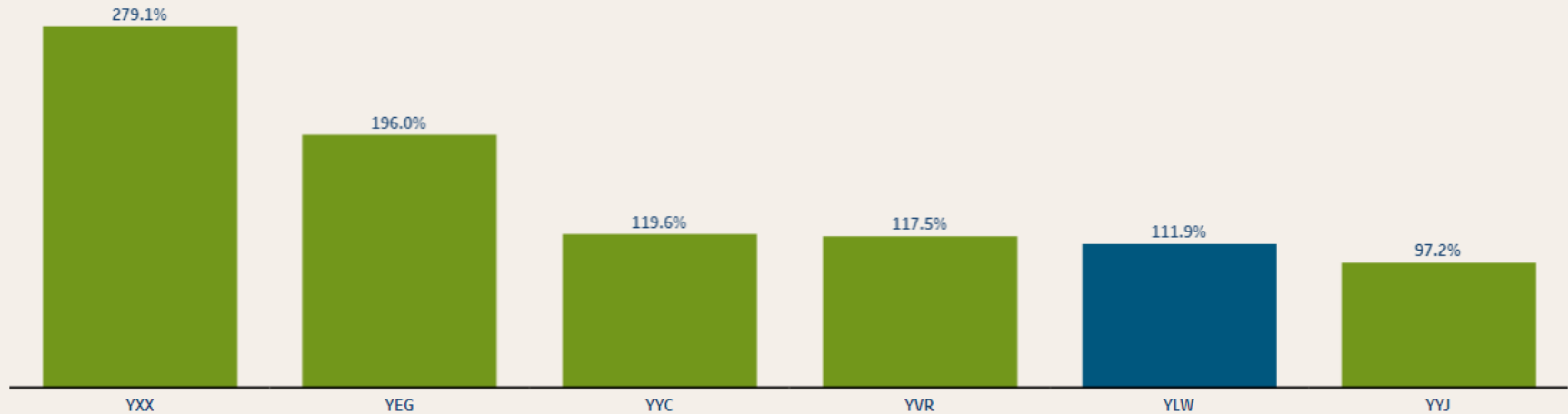
### Kelowna International Airport, by destination served

Select a destination airport to filter Seat Benchmark

	Grand Total	YYC	YVR	YEG	YYZ	YYJ	YWG	YHM	YUL	YXS	YKF	YXY	YOW	YXC
October 2020	82,731	35,014	27,565	7,914	5,856	1,938	2,366	0	0	646	0	976	0	456
October 2021	175,346 111.9%	55,650 58.9%	54,041 96.0%	30,856 289.9%	17,192 193.6%	6,036 211.5%	2,835 19.8%	2,835	2,603	1,330 105.9%	1,312	0 -100.0%	656	0 -100.0%

### Monthly Seat Benchmark, by selected airports

YoY Growth in Seats, Monthly (%)



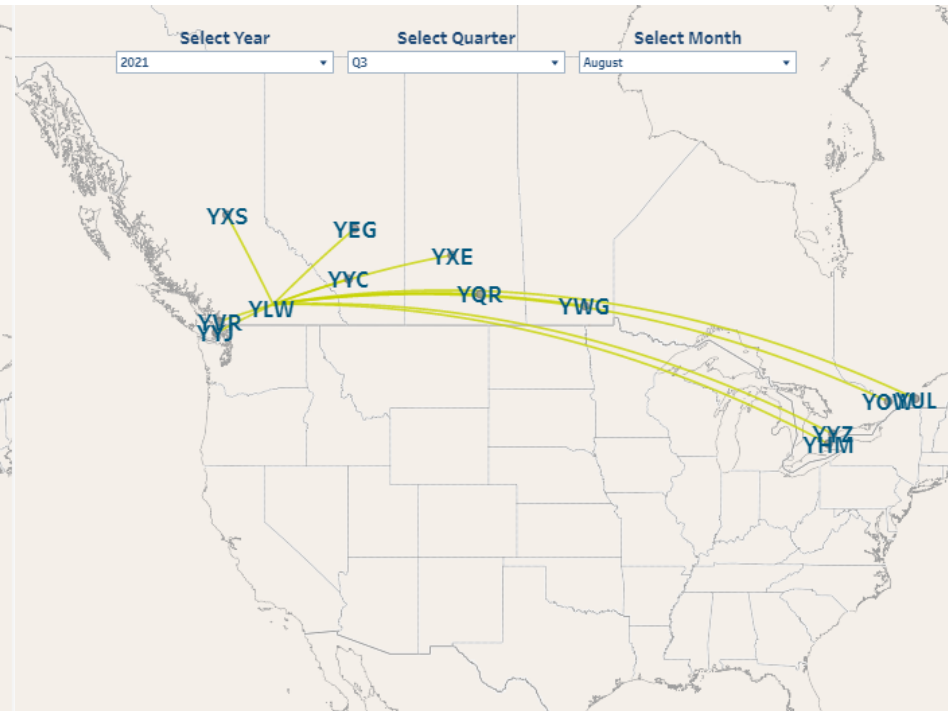
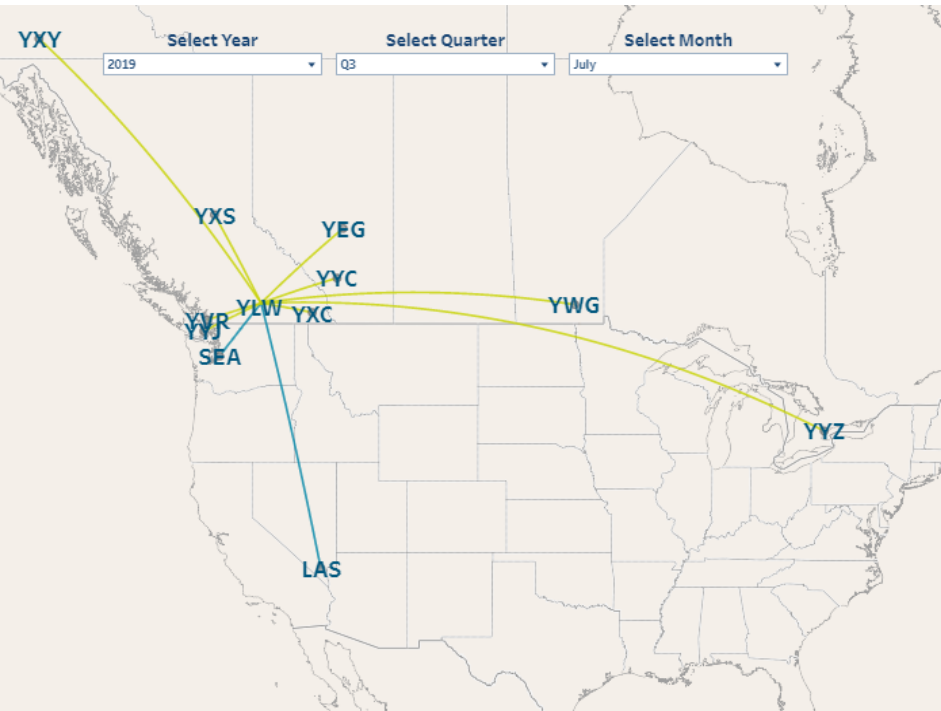
Source: Innovata Schedules via Dilo. Schedules as of September 7, 2021



# 2019 Summer Air Service vs. 2021

2019 – 9 domestic destinations

2021 – 14 domestic destinations



2019:  
Canada – Whitehorse, Victoria, Vancouver, Prince George,  
Cranbrook, Calgary, Edmonton, Winnipeg and Toronto  
USA – Seattle, Las Vegas

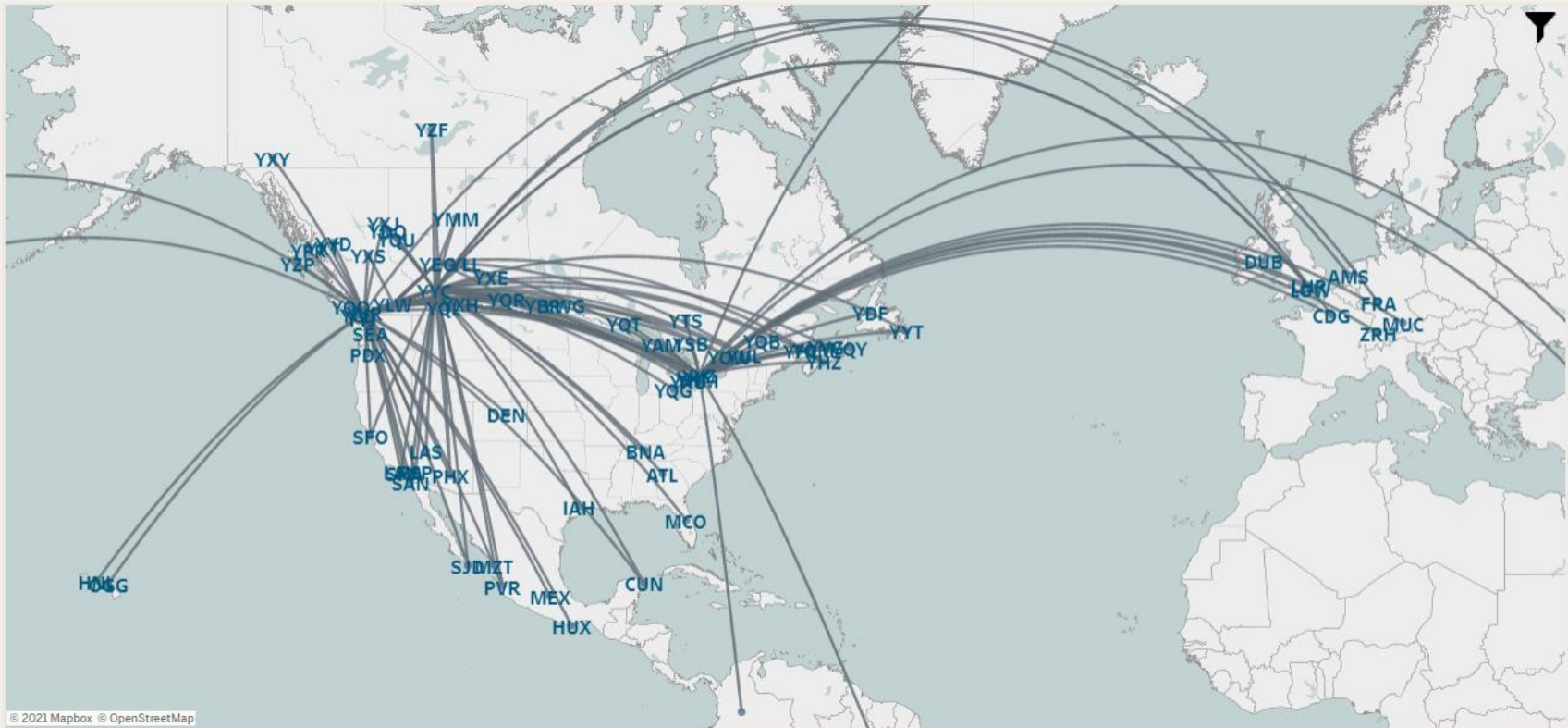
2021:  
Canada – Whitehorse, Victoria, Vancouver, Prince George, Calgary,  
Edmonton, Saskatoon, Regina, Winnipeg, Kitchener/Waterloo,  
Hamilton, Toronto, Ottawa, Montreal

# Air Service Development Update

Connectivity October 2021 – Zoom In

## YLW Connectivity Analysis Dashboard

Select Year: 2021 | Select Month: October | Connecting Airport: (All)



© 2021 Mapbox © OpenStreetMap

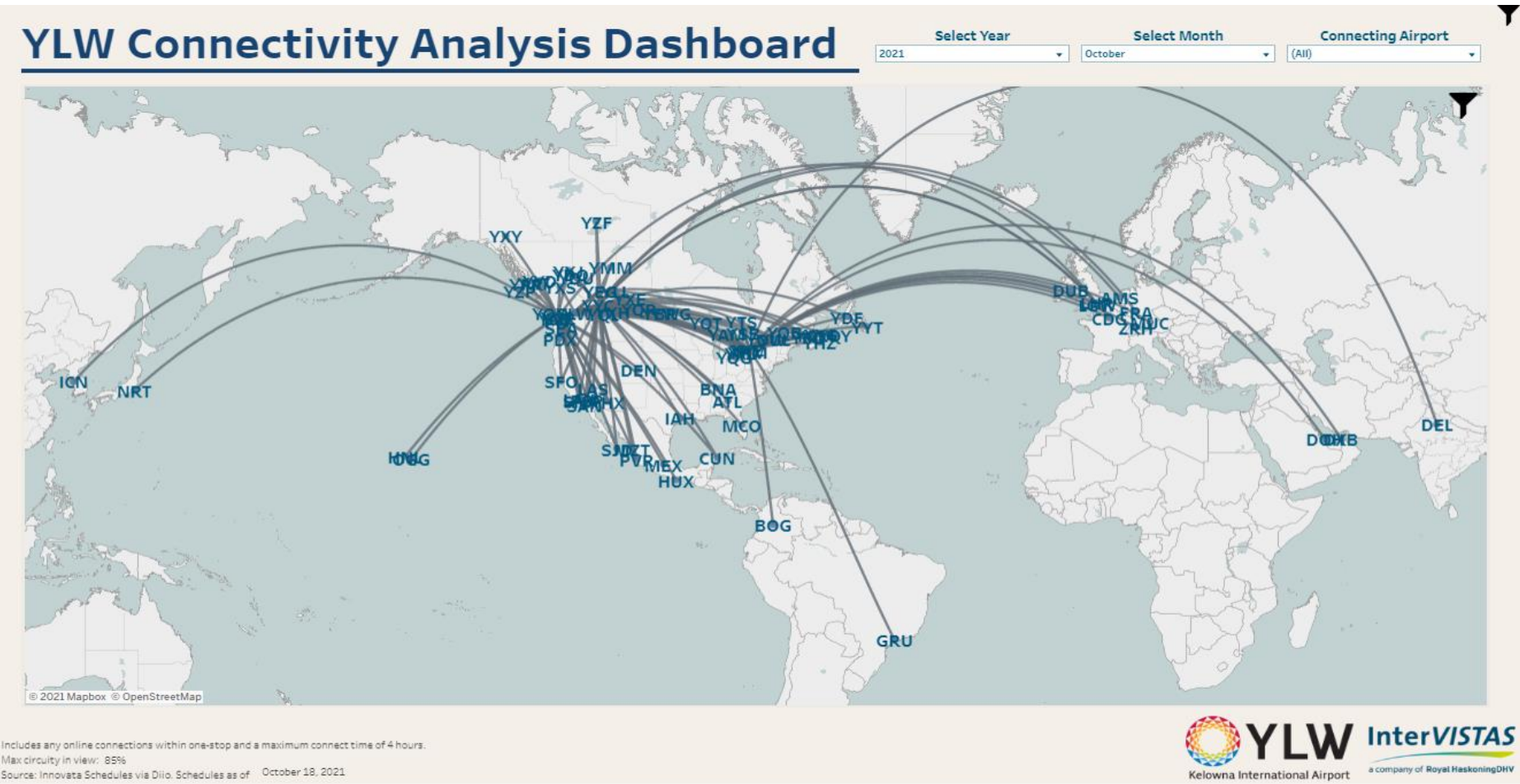
Includes any online connections within one-stop and a maximum connect time of 4 hours.  
Max circuitry in view: 85%

Source: Innovata Schedules via Diio, Schedules as of: October 18, 2021



# Air Service Development Update

Connectivity October 2021 – Zoom Out

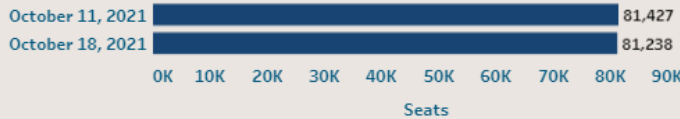


# Air Service Development Update

## YLW Seat Capacity Comparison by Filing Date

Select Month: October 2021  
 Select Airport: YLW

### Selection Summary



### Top Airlines

	October 11, 2021		October 18, 2021		
Airline	Seats		Seats	% Change	Color
WS	49,854		49,854	0.00%	Grey
AC	18,732		18,732	0.00%	White
WO	5,481		5,292	-3.45%	White
AM	2,028		2,028	0.00%	White

### Top Destinations

	October 11, 2021		October 18, 2021		
Destination	Seats		Seats	% Change	Color
YVR	26,672		26,672	0.00%	Grey
YYC	23,640		23,640	0.00%	White
YEG	15,396		15,396	0.00%	White
YY7	8,573		8,384	-2.20%	White



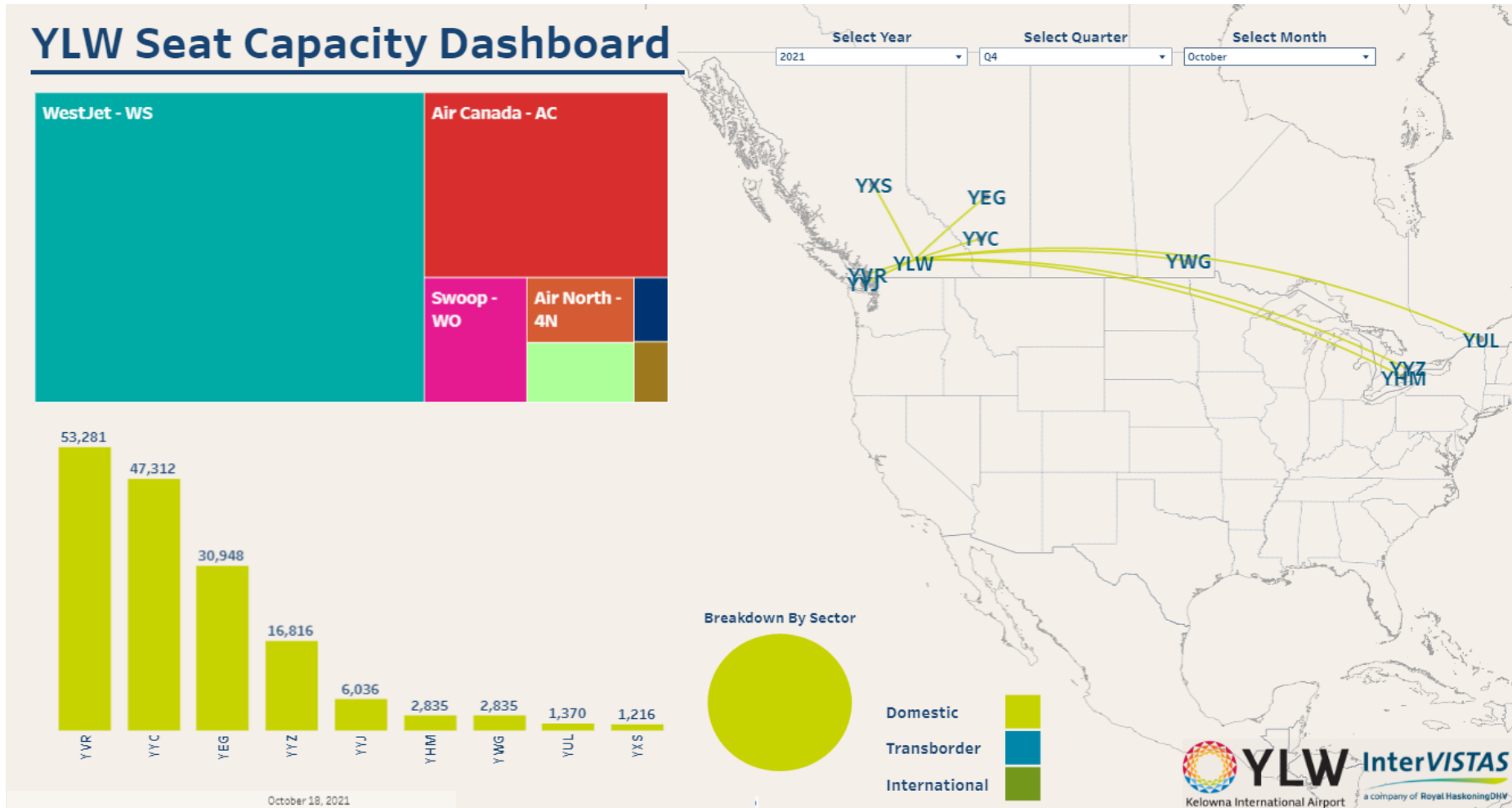
© 2021 Mapbox © OpenStreetMap

Source: Innovata Schedules via Dilo. Schedules as of October 18, 2021



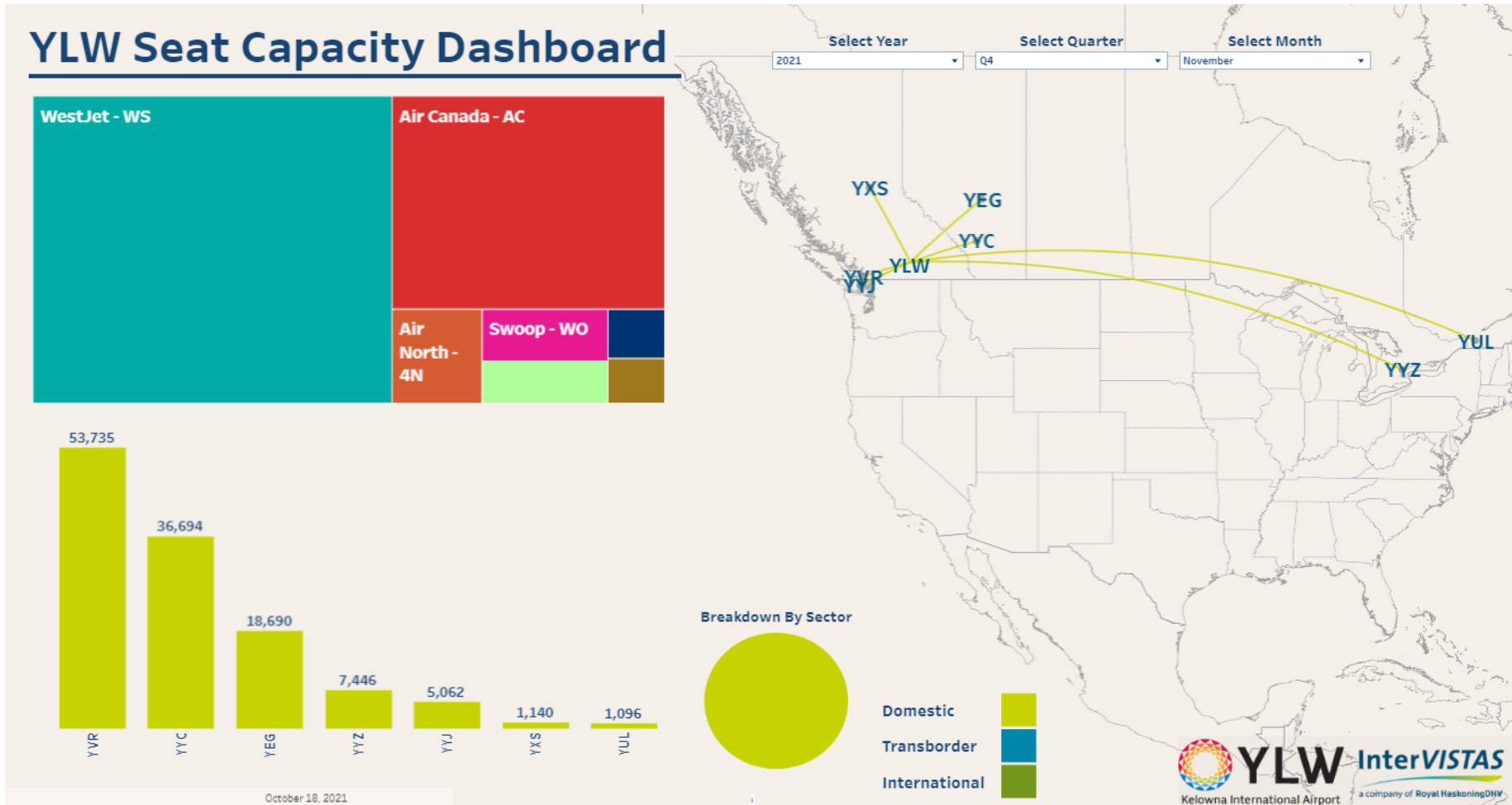
# Air Service Development Update

October 2021



# Air Service Development Update

November 2021



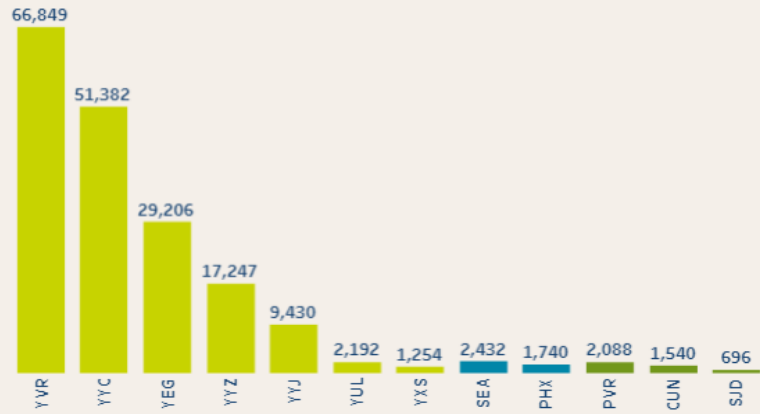


# Air Service Development Update

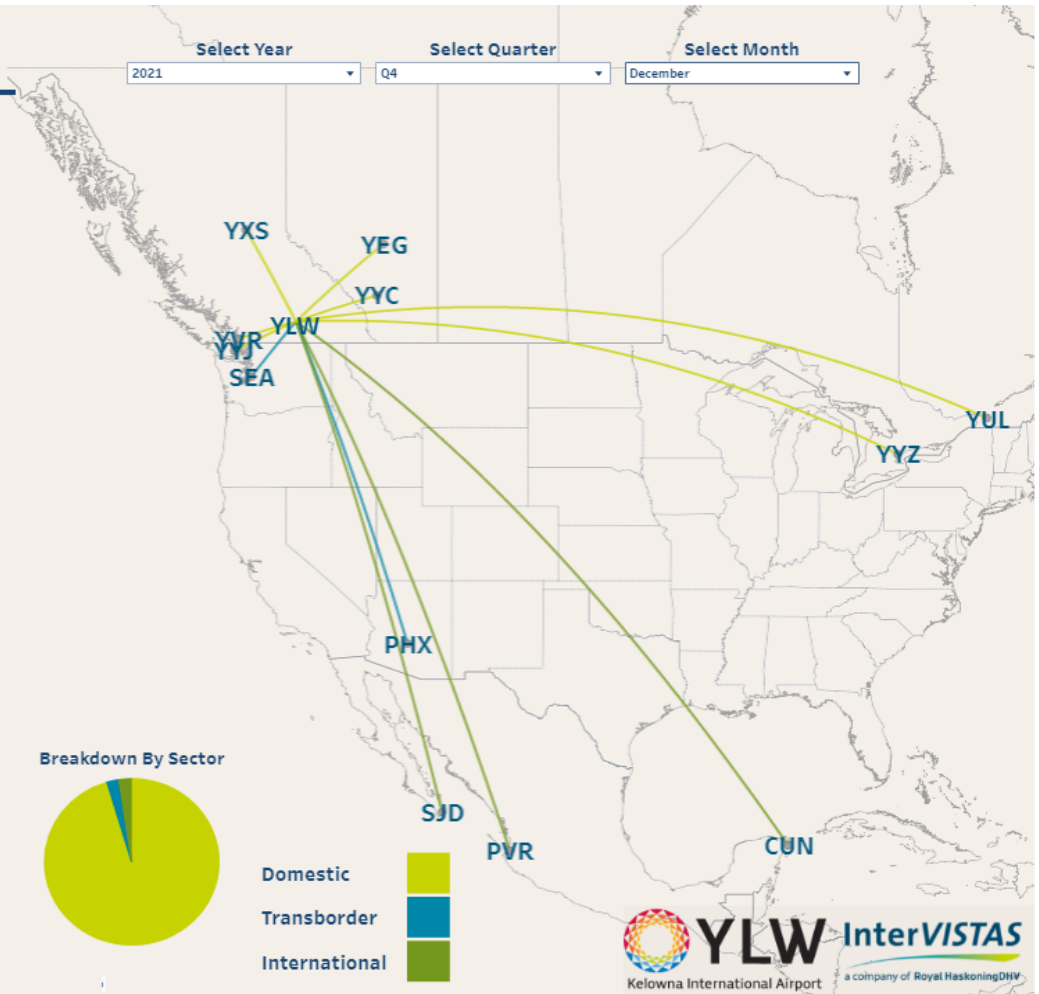
December 2021

## YLW Seat Capacity Dashboard

Select Year: 2021 | Select Quarter: Q4 | Select Month: December



Breakdown By Sector



October 18, 2021

# Air Service Development Update

October 2021

## Summary By Airline

	Flights - Previous Year	Flights - Current Year	% Difference (Flights)	Seats - Previous Year	Seats - Current Year	% Difference (Seats) X
Air North - 4N	18	47	161.1%	2,196	5,734	161.1%
Pacific Coastal - 8P	126	96	-23.8%	2,394	1,824	-23.8%
Central Mountain Air - 9M	35	91	160.0%	665	1,729	160.0%
Air Canada - AC	342	443	29.5%	27,288	37,386	37.0%
Flair Airlines - F8	64	28	-56.3%	10,816	5,292	-51.1%
Swoop - WO	4	56	1300.0%	756	10,584	1300.0%
WestJet - WS	352	986	180.1%	38,616	100,100	159.2%
Grand Total	941	1,747	85.7%	82,731	162,649	96.6%

# Air Service Development Update

## YLW Summary Table

Select Year: 2021      Select Quarter: Q4      Select Month: October

### Summary by Destination

	Flights - Previous Year	Flights - Current Year	% Difference (Flights)	Seats - Previous Year	Seats - Current Year	% Difference (Seats)
Edmonton - YEG	78	262	235.9%	7,914	30,856	289.9%
Hamilton - YHM	0	15		0	2,835	
Waterloo - YKF	0	8		0	1,312	
Ottawa - YOW	0	4		0	656	
Montreal-PET - YUL	0	19		0	2,603	
Vancouver - YVR	353	685	94.1%	27,565	54,041	96.0%
Winnipeg - YWG	14	15	7.1%	2,366	2,835	19.8%
Cranbrook - YXC	24	0	-100.0%	456	0	-100.0%
Prince George - YXS	34	70	105.9%	646	1,330	105.9%
Whitehorse - YXY	8	0	-100.0%	976	0	-100.0%
Calgary - YYC	288	547	89.9%	35,014	55,650	58.9%
Victoria - YYJ	102	150	47.1%	1,938	6,036	211.5%
Toronto - YYZ	40	110	175.0%	5,856	17,192	193.6%
<b>Grand Total</b>	<b>941</b>	<b>1,885</b>	<b>100.3%</b>	<b>82,731</b>	<b>175,346</b>	<b>111.9%</b>

Source: Innovata Schedules via Dilo. Schedules as of September 7, 2021

# International Status



Daily loss of routes and schedules without the certainty of the return of our ability to operate with international status has equated to \$2.5M dollars in lost revenue for YLW.

Local businesses suffering without certainty of status

- Canadian Mountain Holidays – 7,500 clients
- Big White – cancelation of forward bookings
- Christmas transborder travel

# Federal Grant Funding



**Regional Airport Relief Fund (ARF)**

**Air Transportation Initiative (RATI)**

**Airport Critical Infrastructure Program (ACIP)**



# YLW

Kelowna International Airport

# Financial Update

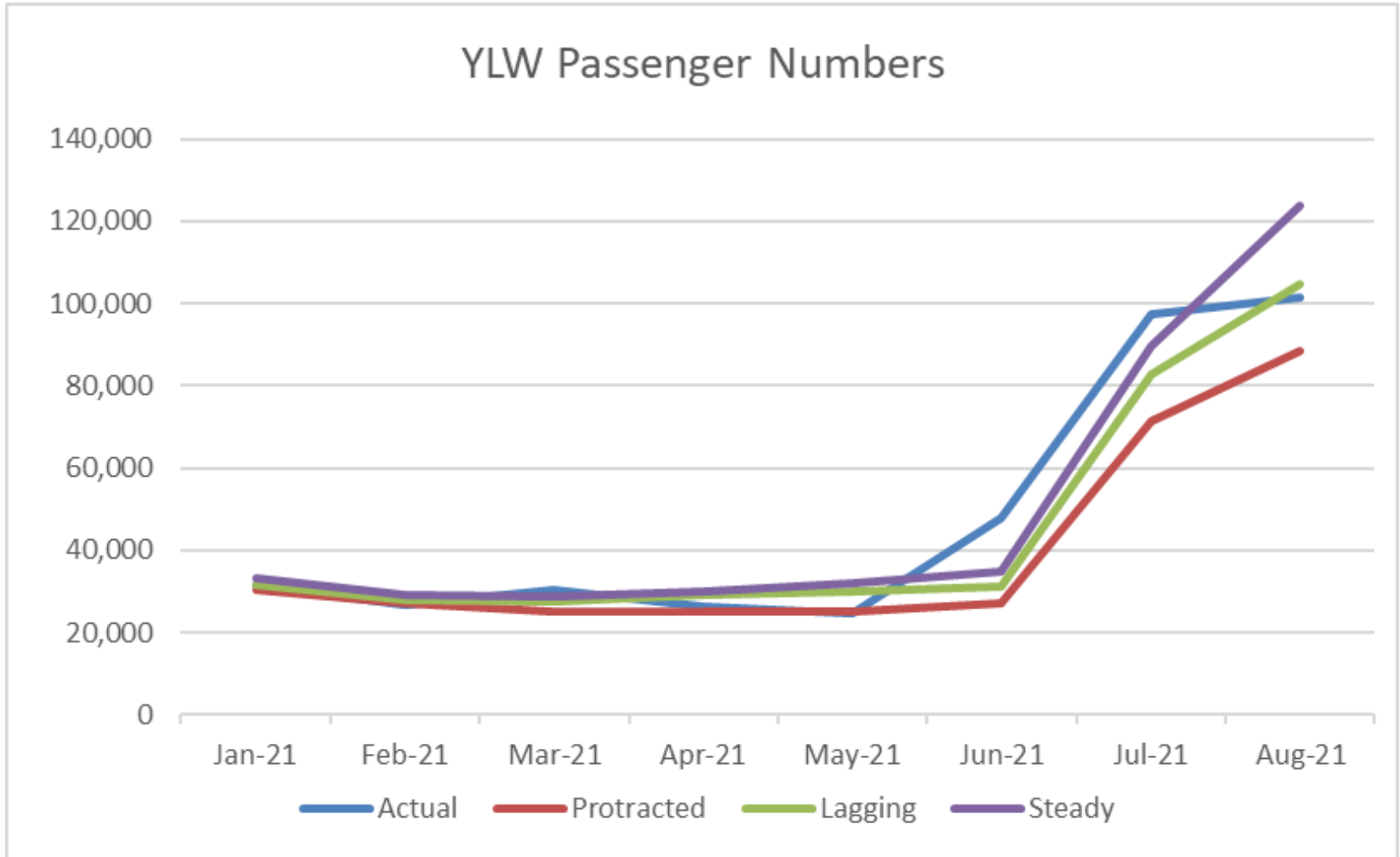


# COVID-19 Financial Forecasting

## ► 2021 Passenger Forecast

	2021 Budget	Steady	Lagging	Protracted
<b>Passengers</b>	<b>512,981</b>	<b>934,241</b>	<b>840,626</b>	<b>765,624</b>
<b>Comparable Year</b>	Prior to 1996	2004/05	2000	1997
<b>% Change from 2020</b>	-30%	27%	14%	4%
<b>% Change from 2019</b>	-75%	-54%	-59%	-62%

# COVID-19 Financial Forecasting





# COVID-19 Financial Forecasting - Non-AIF

	2021 Budget	Steady	Lagging	Protracted
Revenues	8,982,000	17,480,000	16,331,000	15,411,000
Interest Income	155,000	155,000	155,000	155,000
Operating Expenditures	(14,181,000)	(12,455,000)	(12,455,000)	(12,455,000)
Payment to COK	(1,989,000)	(1,989,000)	(1,989,000)	(1,989,000)
Capital Expenditures	(434,000)	(608,000)	(608,000)	(608,000)
Acquisition of Property	-	-	-	-
Debt Payments*	(900,000)	(900,000)	(900,000)	(900,000)
<b>Total</b>	<b>(8,367,000)</b>	<b>1,683,000</b>	<b>534,000</b>	<b>(386,000)</b>
Opening Reserve	17,638,000	20,212,000	20,212,000	20,212,000
<b>Ending Reserve</b>	<b>9,271,000</b>	<b>21,895,000</b>	<b>20,746,000</b>	<b>19,826,000</b>

# COVID-19 Financial Forecasting - Non-AIF

- ▶ Forecasted operating expenditures (\$14.4M)
  - ▶ Salaries and wages (\$3.9M)
  - ▶ Facility maintenance (\$3.2M)
  - ▶ Payment to City of Kelowna (\$2.0M)
  - ▶ Security expense (\$0.7M)
  - ▶ Professional and consulting services (\$0.5M)
  - ▶ Purchase services (\$0.9M)
  - ▶ Software maintenance (\$0.5M)
  - ▶ Electricity (\$0.4M)

# COVID-19 Financial Forecasting - Non-AIF

- ▶ Forecasted capital expenditures (\$608k)
  - ▶ ATB improvements (\$299k)
  - ▶ Small capital projects (\$170k)
  - ▶ Airside equipment attachments (\$80k)
  - ▶ Long-term and Convair Way parking lot upgrades (\$27k)
  - ▶ Integrated security network (\$32k)

# COVID-19 Financial Forecasting - AIF

	2021 Budget	Steady	Lagging	Protracted
Revenues*	5,860,000	10,781,000	9,714,000	8,858,000
Interest Income	131,000	131,000	131,000	131,000
Operating Expenditures	-	-	-	-
Capital Expenditures	(7,562,000)	(6,964,000)	(6,964,000)	(6,964,000)
Debt Payments**	(2,481,000)	(2,481,000)	(2,481,000)	(2,481,000)
<b>Total</b>	<b>(4,052,000)</b>	<b>1,467,000</b>	<b>400,000</b>	<b>(456,000)</b>
Opening Reserve	11,591,000	11,591,000	11,591,000	11,591,000
<b>Ending Reserve</b>	<b>7,539,000</b>	<b>13,058,000</b>	<b>11,991,000</b>	<b>11,135,000</b>

# COVID-19 Financial Forecasting - AIF

- ▶ Forecasted capital expenditures (\$7.0M)
  - ▶ Taxiway Delta rehab (\$4.4M)
  - ▶ ATB expansion design (\$1.7M)
  - ▶ Parking lot equipment replacement (\$0.45M)
  - ▶ Taxiway Echo rehab (\$0.28M)
  - ▶ Bridge mechanical upgrades (\$0.05M)
  - ▶ Self-serve bag drop consultation (\$0.05M)
  - ▶ Light-standard replacement (\$0.03M)

# Financial Update

## ▶ Debt Repayment Schedule

	2022	2023	2024	2025	2026	2027	Total
Principal	1,897,000	1,897,000	1,897,000	1,897,000	1,258,000	698,000	9,544,000
Interest	584,000	584,000	584,000	584,000	333,000	112,000	2,781,000
<b>Total</b>	<b>2,481,000</b>	<b>2,481,000</b>	<b>2,481,000</b>	<b>2,481,000</b>	<b>1,591,000</b>	<b>810,000</b>	<b>12,325,000</b>

### ▶ Paid in 2021

- ▶ Principal: \$1,897,000
- ▶ Interest: \$584,000

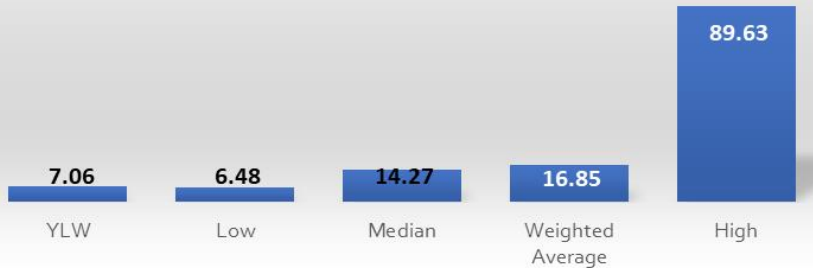
### ▶ Municipal Finance Authority Loans

- ▶ \$7.5M (2.75%) – October 2015
- ▶ \$3.5M (2.60%) – April 2016
- ▶ \$3.0M (2.10%) – October 2016
- ▶ \$8.0M (2.80%) – April 2017

# Fees and Charges

## ► Aeronautical Revenues per Landed Air Carrier Seat

Tier 2 Aeronautical Revenues per Landed Carrier Seat  
(12 Months Ended June 30, 2021)



Tier 1 & 2 Aeronautical Revenues per Landed Carrier Seat  
(12 Months Ended June 30, 2021)



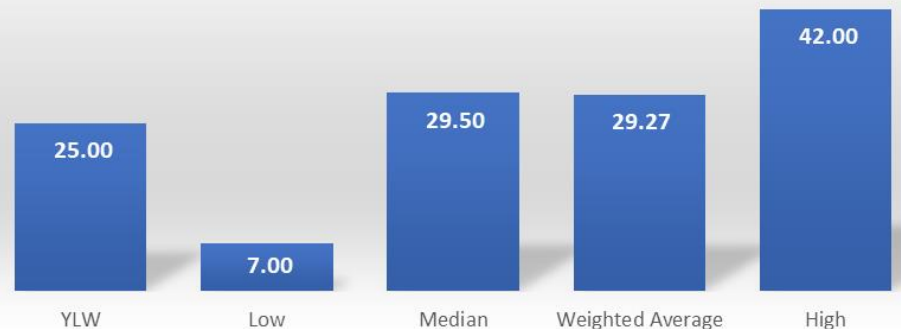
# Fees and Charges

## ► Airport Improvement Fee per Enplaned Passenger

Tier 2 AIF per Enplaned Passenger  
(12 Months Ended August 31, 2021)



Tier 1 & 2 AIF per Enplaned Passenger  
(12 Months Ended August 31, 2021)

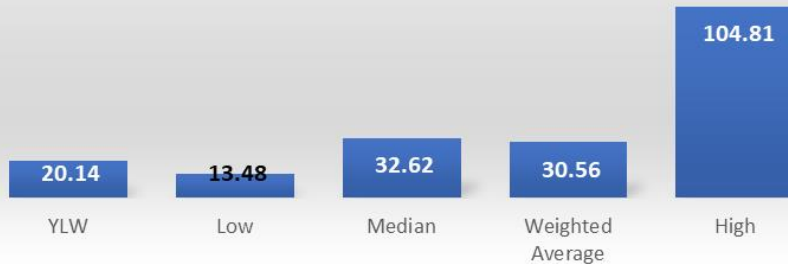




# Fees and Charges

## ► Aeronautical Revenues and Airport Improvement Fee per Landed Air Carrier Seat

Tier 2 Aeronautical Revenue and AIF per Landed Air Carrier Seat  
(12 Months Ended June 30, 2021)



Tier 1 & 2 Aeronautical Revenue and AIF per Landed Air Carrier Seat  
(12 Months Ended June 30, 2021)



# Fees and Charges

## ▶ 2022

### ▶ No increase

- ▶ AIF
- ▶ Landing
- ▶ Terminal

### ▶ Increase proposed

- ▶ Parking

# Fees and Charges

## ▶ Proposed Parking Fees

- ▶ Last increase effective December 1, 2018
- ▶ Effective January 1, 2022

	Current	Proposed	# of Comparables	Rank (Lowest to Highest)
<b>Short-term</b>				
1st hour or part thereof	\$ 1.75	\$ 2.00	13	5
Each additional hour or part thereof	\$ 2.75	\$ 3.00	10	5
Max per 24 hours	\$ 21.00	\$ 23.00	11	6
Gold Pass 6 month pre-purchase program	\$1,025.00	\$1,100.00	1	1
<b>Long-term</b>				
1st hour	\$ 1.75	\$ 2.00	9	3
Each additional hour or part thereof	\$ 2.75	\$ 3.00	7	4
Max per 24 hours	\$ 14.00	\$ 15.00	12	5
Max per week	\$ 70.00	\$ 75.00	10	5

# Fees and Charges

## ▶ Proposed Parking Fees

- ▶ Last increase effective December 1, 2018
- ▶ Effective January 1, 2022

	Current	Proposed	# of Comparables	Rank (Lowest to Highest)
North End Lot and North Airport Way				
First 24 hours	\$ -	\$ -	1	1
Each additional 24 hours or part thereof	\$ 8.00	\$ 10.00	1	1
Valet Parking				
Per use	\$ 20.00	\$ 25.00	2	1
Curbside Parking Meters				
Per 30 minutes	\$ 2.00	\$ 2.50	2	2
Aircrew Parking				
Per month or part thereof	\$ 30.00	\$ 32.50	1	1
Vehicle Storage				
Per month	\$ 30.00	\$ 75.00	1	1



**YLW**

Kelowna International Airport



# Recommendations

# Recommendations

- ▶ THAT the Airport Advisory Committee receive, for information, the report from Kelowna International Airport, presented on October 28, 2021;
- ▶ AND THAT the Airport Advisory Committee supports obtaining the approval of Council for the amendment to the Airport Fees and Charges Bylaw No. 7982 to increase the Airport Parking fees effective January 1, 2022, as presented to the Airport Advisory Committee on October 28, 2021.



Kelowna International Airport

*Questions?*

For more information, visit [ylw.kelowna.ca](http://ylw.kelowna.ca).